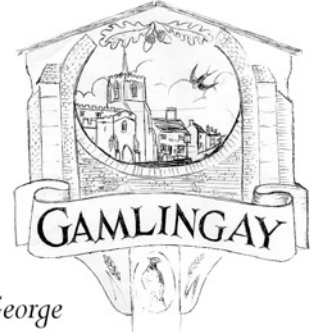


The Gazette



The Community Chronicle for Gamlingay, East Hatley and Hatley St. George

Established November 1991

March 2025

Circulation 2,050

Have you seen the Potton Panther?

by Catherine Travers

On 12 January I was idly browsing Facebook when a post caught my eye in the “Gamlingay!!” group, asking whether anyone had seen “what looks like a black panther” – jet black, and seemingly not a dog or deer – between Hatley and Croydon Hill.

Intriguing, I thought – and then watched as replies flooded in suggesting explanations varying from a black fox (apparently there is one in the Croydon area) to Black Shuck (a mythical East Anglian dog). But one suggestion was repeated over and over again – the Potton Panther.

As a relative newcomer to the village, the Potton Panther was news to me. But apparently, big cat sightings have been reported in this area for decades. This is probably typical of many rural areas across the country (the beast of Bodmin Moor, anyone?) – indeed there are many websites dedicated to tracking big cat sightings across the UK. But I was nevertheless surprised at how quickly people came forward to share their stories.

In total on the message thread, I counted thirteen separate accounts of sightings spread across the past 25 years, including two in the days immediately preceding the original Facebook post. Many witnesses commented on the distinctive way the animal moved. For example, Kyle Marr (who saw the possible panther with his wife Alison last summer, in the woods between Park Lane and the Moon Gate) said: “It was clear to me to be a large cat just by the way it was running – [it was] definitely different to a deer and was black”. Timmy Jakes (who saw it in his childhood) described how it “took off through the woods towards



Definitely not the Potton Panther; image courtesy of Pexels.com

the trout lake faster than anything I have ever seen move”.

Lucy Cox, who wrote the original Facebook post, explained that she has worked or spent time at veterinary practices, farms, zoos and big cat sanctuaries, and is “99.9% sure” that what she saw was a big cat. She adds “it was a thick, white frost that morning, and the sun just coming up tinged everything peach – so the black of it really stood out in the field”. Lucy and her daughter Alyssa, who also witnessed the event, now look out every day as they drive past Hatley.

Lucy and Alyssa reported their sighting and they understand that several other reports were received, all within close proximity. Local farmer John Jefferies also saw something unusual on Fuller’s Hill a few days beforehand, and commented that “I wouldn’t discount this ... I’m sure it wasn’t a fox, and it was an unusual time of day for fox/badger. It also moved differently”.

What are we to make of all this? Our witnesses here seem quite reliable and consistent, yet it does seem reasonably unlikely that there is a panther living (largely) undetected in our midst. My short trawl of google suggests that there is no *conclusive* scientific evidence of the ongoing, widespread existence of a wild big cat population in the UK – despite persistent rumours and sightings, and the odd strand of DNA. And perhaps that’s reassuring. But then again, perhaps it would be *more* reassuring to think that, even as we brandish our surveillance devices and encroach on their habitats, wild animals can still find ways to evade, outwit and outsmart us.

What's inside for March

1	Have you seen the Potton Panther?
3	<i>Gazette</i> deliverers update – and thank you to Jane Colebrook About the <i>Gazette</i> Letter to the Editor
4	Photo of the month Gamlingay wedding photographer recognised Hatley deer rescue
5	New on-demand bus service Parish Council budget 2025/6
6	Gamlingay's Neighbourhood Plan – two years on
8	News from the Eco Hub
9	What's on at the Eco Hub: Events in March
10-11	Gamlingay Baptist Church
12-13	Parish Church of St. Mary the Virgin
14-19	Annual report from Gamlingay School's Out Club (GSOC)
20-21	Historyman: A Gamlingay harvest
22	A new nature club for GVP An update from the Gamlingay Show
23	Restoring Millbridge Brook
24-25	Bringing together two ancient crafts
26	Update from How Are You South Cambs?
27	Wellbeing wisdom Booking open for the next Repair Café!
28-31	Councillors' column
32	Gamlingay Netball Club
33	Gamlingay United Football Club
34	Potatoes with tomato sauce
35	Quiz and Puzzle Corner
36-37	What's On
39-39	Village Information and contact details

The Gazette

Editorial Committee

Chair

Ted Bradshawe
committee@gamlingaygazette.uk

Editor

Keith Warburton
editor@gamlingaygazette.uk

Guest Editor

Catherine Travers
editor@gamlingaygazette.uk

Layout Editor

Larry New
editor@gamlingaygazette.uk

Distribution Manager

Jan Bremner
jan_bremner@btinternet.com

Distribution

A large team of loyal and intrepid volunteers that makes it all possible

Advertising Manager

Jan Bremner
advert@gamlingaygazette.uk

Village web pages

Roderick Starksfield
gamlingay.org
Ted Bradshawe
Gamlingaygazette.uk

What's On

whatson@gamlingaygazette.uk

Next edition deadlines:

**May Issue:
Friday, 28 March**

**June Issue:
Friday, 25 April**

Your *Gazette* in colour, every month!

The *Gazette* team would love to be able to bring you a printed colour issue every month, especially when we have lots of colour images to share. Unfortunately, we can't afford to do that. But a colour version of the *Gazette* is available for you to download from www.gamlingaygazette.uk

About the Gazette

About us:

The Gamlingay Gazette is an independent publication that aims to inform people living in and around Gamlingay of local news and events. It is funded solely by advertising. Every care is taken to ensure the accuracy of content but the Gazette cannot be held liable for any errors. Views expressed do not necessarily represent the views of the Gazette Committee.

To advertise:

Please email Jan Bremner: adverts@gamlingaygazette.uk.

Announcements:

The Gazette will share announcements of arrivals and departures.

Please send your notices, of no more than 50 words, to: editor@gamlingaygazette.uk.

Submit an article:

We welcome contributions of articles and pictures – without them there would be no Gazette!

To submit an article, simply email your contribution on: editor@gamlingaygazette.uk.

Article text can be submitted within an email or as an attachment.

Images should be submitted separately: please do not lay out or design your submission for us.

Please state who took or owns each image, and ensure that you have permission from anyone shown in clearly recognisable form.

Do let us know if you would like to be added to our monthly article submission reminder emails.

Please note that the Gazette reserves the right to edit all content for style, length and accuracy.

Gazette deliverers update – and thank you to Jane Colebrook

The Gazette team were deeply saddened to hear of Jane Colebrook's death in January. Jane has been a dedicated deliverer of your monthly Gazette for many, many years; she was a valued member of our team and we will miss her. We would like to express our sincere thanks to her



for her contribution, and to extend our condolences to her family.

On a more logistical note, we have covered Jane's round but we would be keen to hear from any villager who would like to step up to take over the remaining vacant round – 22 copies along Drove Road from Iron Church to the Cinques.

The time commitment is small (less than an hour per month) but the value to our village community is big!

Please contact jan_bremner@btinternet.com if you think you might be able to help.

Thank you to all our deliverers – past, present and future from the Gazette team.

Letter to the Editor

The Gazette received the following letter in response to the January/February issue:

I always appreciate and enjoy the Gazette very much; it's the best local publication I've experienced. However, this month's editorial has disappointed me:

“In a world where billionaires spend their money on ego-booting (sic) rockets to Mars ...”

This is a clear reference to Elon Musk. Elon is not developing the Starship vehicle as an ego boost; he correctly sees it as the only way to achieve his goal of Mars colonisation and I agree with him that this is an essential goal. Most of Space-X's finance is from commercial business (Starlink via the Falcon-9, NASA funding of Starship for the lunar HLS program, commercial launches, input from Tesla etc.) so it's not really Elon's money!

I found your statement derogatory and unfortunate. It devalued the Gazette in my eyes.

Nonetheless; I wish The Gazette team a very happy Christmas and thank you for the vast majority of your output, which is excellent.

Regards, Phil White

Note from the editor:

Thank you for your kind words about (most of) the magazine, Phil. We are always pleased to hear from our readers, even when they aren't happy about what we've written; at least it shows that someone is reading it! We imagine many of our readers will have formed their own opinions on Elon Musk and thank you for sharing yours. Thanks also for flagging the typo; our editorial team were a bit stretched in the run-up to Christmas!

This month's highlights:

- How is the Neighbourhood Plan working in practice? – page 6
- Everything you need to know about Gamlingay School's Out Club – pages 14 to 17 and 19
- How Millbridge Brook Meadows is evolving – pages 23 and 24

Photo of the month

This month's photo comes courtesy of Anthony Hurst, and shows crocuses outside the Eco Hub. The bulbs were planted several years ago with the help of a contribution

from the Gamlingay Community Wind Turbine Tithes Fund. Each year we see more crocuses, though the display does not yet quite rival the one on Charnocks Close!



Please email your contributions for this feature to editor@gamlingaygazette.uk.

Gamlingay wedding photographer recognised

Carrienne Cook shares some good news about her local business

I was delighted to be a regional finalist in The Wedding Industry Awards earlier this year. The awards recognise excellence in the wedding industry – and my company, Happy Moments Co., was shortlisted in the photography category in the East Anglian region.

I love my work, and taking photos at weddings is my happy place – but having this recognition has been brilliant, especially as it is based on feedback from clients.

As a Gamlingay-based business I'm hoping to grow, and am currently having a new natural light studio built in the village so that I can take photographs in situ here, as well as on location at wedding venues.

Hatley deer rescue

Gamlingay Community Fire & Rescue station report that they were called to rescue a rather large deer a few weeks ago. It had become tangled in a football net at Hatley Park.

Assisted by crews from Cambridge Fire Station and a local vet, they managed to free it and release it back into the wild.



Image courtesy of Cambs Fire Service

New on-demand bus service

The Gazette reports on a new service

A new “Tiger on Demand” bus service has just been rolled out to several new zones, including Gamlingay and (some) surrounding villages. Rather than being a large and constantly available feline (as the name might suggest), Tiger on Demand is in fact “a new, flexible concept for delivering public transport services”. The idea is to connect rural communities in areas where traditional bus routes aren’t viable.

TIGER

On Demand

Essentially, Tiger on Demand is an on-demand bus service, available Monday to Saturday from 6.30am to 7.00pm. You can book to travel via an app, online (www.tigerondemand.co.uk) or by calling 01480 595440. Adult fares are £2.00 and there are various fare concessions.

You can travel to/from “virtual bus stops” *within* your zone. There are an impressive number of stops (for example, there are three in Gamlingay, two in Hatley, and one on the Cinques) – but, having looked at the maps, the zones are quite specific. For example, from Gamlingay you could travel to Abbotsley, Cambourne, Bourn, the Gransdens or Wimpole (amongst many other villages within the area) – but *not* to Comberton, Pottton, Melbourn and Papworth, because they fall outside “our” zone. As ever, we are right at the edge of the map!

To find out more (including route maps), visit: transport.cambridgeshirepeterborough-ca.gov.uk/buses/tiger-on-demand.

The Gazette is keen to hear reader stories about this service – do drop us a line on: editor@gamlingaygazette.uk.

Parish Council budget 2025/6

By Gamlingay Parish Council

The Parish Council has resolved to charge a precept of £238,150 for 2025/6. This will be a 3.36% increase per Band D property.

In considering the budget for next year, the Parish Council took note of the aims and aspirations in the Action Plan, which is informed by discussions at meetings throughout the year and a consultation run at the Village Show in September. As well as all the standard inclusions (such as staff costs, grounds maintenance, insurance etc.), next year’s budget also includes allocations towards:

- Replacing the solar stud lights on the recreation field path.
- Re-edging and surfacing the paths in St Mary’s churchyard.
- A grant application to install a new, formal footpath from Dennis Green to Park Lane (part funding to accompany the application).
- A replacement maze/willow dome structure at Millbridge Brook Meadows.
- Youth projects.

The budget and action plan can be viewed on our website: www.gamlingay-pc.gov.uk.



Lewis Wooding

Internal & External
Decorating Services

Personal references available

Competitive estimates
Detailed quotations

Phone 01767 651647
Mobile 07889 966557



POTTON WINDOWS LTD

Quality PVCu
Windows and Doors
Secured by Design

FENSA and 10-year Guarantee
Professional Service Assured

Misted-up double glazed units
replaced

Tel: 01767 260626

E-mail:
sales@pottonwindows.co.uk

LIBERTY

Conservatories, summerhouses, doors, windows and all related repairs. Quality PVCu and aluminium specialist.

Conservatories	Sash Windows	Guttering	Doors
Orangeries	Casement Windows	Verandas	
Canopies	Bi Folding Doors	Fascias	

For a no obligation quotation
Matthew Sanders 07976 586 615
Tel: 01767 220 621
[email msanders471@btinternet.com](mailto:msanders471@btinternet.com)

Office 71 Station Road, Tempsford SG19 2AX
A FENSA Registered Company, 10-Year Insurance Backed Guarantee

Gamlingay's Neighbourhood Plan – two years on

Samantha Martin, Chair of Gamlingay Parish Council, shares the positive impact this plan is having in shaping future development within the parish.

The vision set out in Gamlingay's Neighbourhood Plan is for our village to 'continue to be a thriving and sustainable community and an attractive, friendly and safe place to live and work'. One of our defining characteristics is that we are a radial village – we have a central village core with satellite hamlets and easy access to the open countryside.

The vision is underpinned by six objectives and ten planning policies which set out what developers and planning officers should consider when determining whether a planning application is appropriate for our village. This includes ensuring new housing meets local need, and that development proposals seek to maintain the integrity of our landscape setting as well as reflect the strong character of our built heritage.

The Neighbourhood Plan has been referenced in a number of decisions on applications by South Cambridgeshire District Council (the Statutory Planning Authority), as well as by the Planning Inspectorate when an application has gone to appeal. Here is an overview of how the ten planning policies have been used over the past year:

- Policy GAM1 aims to increase the numbers of smaller houses to



be built to cater for local needs. There are no significant successes to report this year, but policy GAM1 has been quoted as a reason for refusal in some instances.

- Policy GAM3 is a key policy which aims to protect the open countryside and landscape setting of the village. This policy has been referenced on numerous occasions and has been instrumental in refusing planning permission for the Lupin Field (23/05405/FUL) and other

applications which would affect the settlement pattern.

- Policy GAM6 supports the reuse of existing buildings on the Gamlingay First School site. This policy has not yet been tested, but it is likely that applications for the redevelopment of this site will be forthcoming in 2025.
- Policies GAM7 and GAM8 aim to improve how we get about within the parish, with contributions requested from developers to support enhanced footway/cycleway networks. In 2024, £13,500 has been legally secured for this purpose.
- Finally, Policy GAM9, which is designed to protect and enhance the natural environment and biodiversity of the parish, is being referenced in decisions – particularly for proposals outside the village framework.

So our Neighbourhood Plan continues to be used to shape and inform development in the village. The Parish Council receives regular updates on the plan and formally reviews its progress on an annual basis.

If you'd like to find out more about the plan, you can download it from the South Cambridgeshire District Council website:

www.scambs.gov.uk/planning/local-plan-and-neighbourhood-planning/gamlingay-neighbourhood-plan.

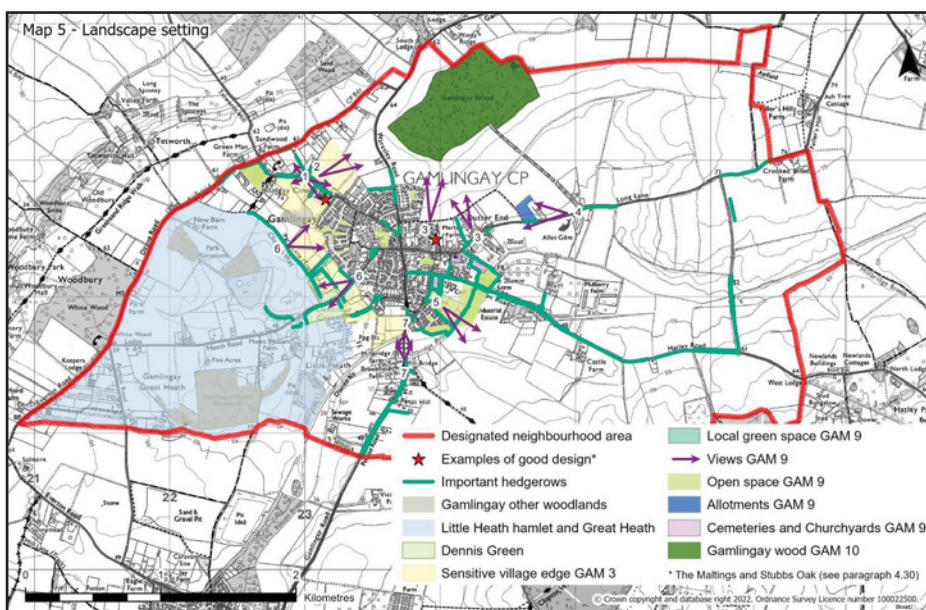
If you'd like to understand how the plan was created, please see: gamlingay-pc.gov.uk/gamlingay-parish-council-neighbourhood-plan.

Interested in planning matters in the village?

The Parish Council welcomes any residents who would be interested in joining the council, including our planning committee. **We desperately need new councillors!**

Please contact the clerks for further information:

clerk@gamlingay-pc.gov.uk



Map 5 of the Gamlingay Neighbourhood Plan, showing the landscape setting.

Careers with KMG Systems Ltd

KMG Systems Limited is the global leader in the design and manufacture of equipment for the biggest names in the snacks industry. This year we are celebrating 50 years of manufacturing at our premises on Station Road, Gamlingay where we now have over 180 employees. The business grows every year and we are currently recruiting for many skilled and unskilled roles including:

- > Fabricator Welder
- > Laser Operator/Nester
- > Wire man
- > Engineering Apprentice
- > R&D Engineer
- > Engineering Graduate
- > Design Engineer
- > Compliance Engineer

We have other vacancies. Visit www.kmgsystems.com to see our most current vacancies and more information about how to apply.





News from the Eco Hub

www.gamlingayecohub.org.uk | phone: 01767 651 226

email: manager@gamlingayecohub.org.uk

Facebook/X: Gamlingay Eco Hub

All the latest What's On on our Facebook page, X feed and website.

Email is the best way to get hold of us or you can leave a message on our answerphone.

Our general manager is Kate Laugharne, supported by Tony Hurst and John Berry.

Village Hall Week 2025

Village Hall Week is a celebration of village halls across the country, organised in partnership with Action with Communities in Rural England (ACRE). This year it will take place **from 17 to 23 March** and focus on the many volunteers who keep these important rural community buildings open.



Connect Café volunteers

With this in mind, we would like to thank the many volunteers who give their time to help run events at the Eco Hub. There are too many to list all, but we must mention the Connect Café organisers who are here every week, the library volunteers who keep us supplied with books and cheerful chat, the St. Mary's Church organisers of Memory Lane dementia group, volunteers from Climate Action Gamlingay who run regular Repair Cafés, and of course the trustees of the Eco Hub,

who share their time and expertise to keep the whole place running.

If you would be interested in finding out about volunteering opportunities either at the Eco Hub or in the wider area, please do get in touch (contact details above).



Carole, a library volunteer at the Eco Hub

As part of the celebrations, we will be holding an open afternoon at the Hub on **Saturday 22 March from 1.00 to 3.30pm**. Pop in, enjoy a cuppa and meet the hall management. We will be showing you round the facilities available and demonstrating what makes the Eco Hub so eco-friendly.

Please come in and join us!

The spring bulbs that keep on giving



Spring is finally starting to arrive and the area around the Eco Hub is looking lovely as the flowers start to bloom.

We are grateful to the Gamlingay Community Wind Turbine Tithe Fund who very kindly gave us a donation a few years ago that enabled us to buy bulbs to cheer up the land around the building.

The flowers are looking better and better every spring, and we hope they will continue to improve the area for many years to come.

Millbridge Brook Meadows at 10: A celebration

The library now has a copy of *Millbridge Brook Meadows at ten: a Celebration* – a lovely photobook showing the first ten years of the Meadows. It is full of beautiful pictures and great memories of the creation and life of the Meadows; do come in and take a look. Thank you to Gamlingay Parish Council for donating the book.

You can see a photo of the book on page 25 of this month's *Gazette* [along with some articles on the latest news from *Millbridge Brook Meadows* – Ed].

Connect Café Charity Coffee Morning

On **Friday 21 March** the Connect Café volunteers will be running a home bake day, in aid of MIND. Come and enjoy all the usual coffee

and good cheer, with added homemade cakes and the opportunity to support this vital mental health charity.



What's on at the Eco Hub: Events in March

Mondays

Zumba Gold

10.00am to 10.45am

Kingfisher Disability Group

10.00am to 3.00pm

Fitness Pilates

11.00am to 11.45am

Movement for Memory

1.00pm to 2.30pm

Street Dance & Freestyle Disco

4.00pm to 6.50pm (*term time only*)

Rainbow Guides

4.00pm to 7.15pm (*term time only*)

Tuesdays

Mat Pilates

10.00am to 10.55am

Chair Pilates

11.05am to 12.00noon

Active Ageing Pilates

12.05pm to 1.00pm

Carpet Bowls

2.00pm to 4.00pm

Yoga

7.15pm to 8.15pm

Wednesdays

Fitness to Prevent Injury

9.30am to 10.30am

Kingfisher Disability Group

10.00am to 3.00pm

Love Art Community Art Group

10.30am to 12.30pm

Puppy Training

6.00pm to 7.30pm

Thursdays

Tai Chi

9.30am to 10.30am

Cha Char Chimps Children's

Fun Session

10.00am to 11.00am

Crafty Ladies Craft Group

(*Gentlemen welcome too!*)

10.00am to 12.00noon

Cha Char Baby Chimps Session

(*For newborns and non-walking babies*)

11.30am to 12.15pm

New Age Kurling

2.00pm to 3.00pm

Alice Lucas School of Dance

Ballet and jazz

5.00pm to 7.45pm (*term time only*)

Fridays

Kingfisher Disability Group

10.00am to 3.00pm

Connect Café Community

Coffee Morning

10.30am to 12.30pm

Saturdays

O'Mahoney Academy Irish

Dancing

9.00am to 10.00am

Sundays

Little Rugger

8.00am to 12.15pm (*term time only*)

Fortnightly/monthly events

For Men to Talk

First Tuesday of the month,
6.00pm to 8.00pm

Memory Lane Group

For people living with dementia and
memory loss and their companions.

Third Tuesday of the month,
2.00pm to 4.00pm

Library Lego Club

First and third Saturdays of the
month, 10.00am to 12.00noon

Monthly Meditation

Third Friday of the month,
7.00pm to 8.00pm

Sound Bath

Fourth Friday of the month,
7.30pm to 8.30pm

One-off events in December

Connect Café home bake week in aid of MIND

Friday 21 March,
10.30am to 12.30pm

Gamlingay Eco Hub open afternoon

Saturday 22 March,
1.00pm to 3.30pm



Professional DOG GROOMING

Brush Out | Wash & Go | Nails | De-matting | Full Groom | Puppy Pack

Diane Constantinides

10 Stocks Lane, Gamlingay | Tel: 07468 905 308

Email: TinyPawsFYI@gmail.com

Web: <https://tinypaws.fyi>

Hair & Moore

A FAMILY RUN UNISEX
HAIR AND BEAUTY SALON,
WITH OVER 40 YEARS
EXPERIENCE!

01767 769303
Hairbyleah98@gmail.com
34 church street, Gamlingay, SG193JH

VOLUNTEER DRIVERS
Community Transport Scheme
Call 07519 493 701



Wendy Hall
BSc(Hons) MRCPod.

Chiropodist/Podiatrist

Moor Farm Cottage, Potton Road,
Abbotsley, St Neots, Cambridgeshire,
PE19 6TY

Telephone 01767 677 554
Mobile 07926 355 884

For all kinds of foot problems:
corns, callus, bunions, nail trims
all in the comfort of your own home
or at my surgery.

Movement for Memory

Seated dance-based classes aimed at those
with **memory loss, limited mobility or
cognitive impairment.**



Mondays, 1 - 2.30pm
£2 per person
Partners/carers
welcome
Gamlingay Eco Hub

BOOK YOUR SPACE:

info.imaginationarts@yahoo.com | 07394 934911





News from the Churches

Gamlingay Baptist Church

Stocks Lane, Gamlingay, Sandy SG19 3JR

Lead Pastor: Reverend Adrian Semerene adrian@gbchurch.org.uk 07472 350 860

Church Secretary: Mike Roberts on 651 179 Church Office: 651 519

Message for March

“Embrace the new, no matter how uncomfortable, and make it work for you.”

Alex Smith (American Athlete)

Well, in all honesty, I can't believe that I'm writing the March edition of the *Gazette* already! It feels as though 2025 has only just started. As I write this, we are about to step into some *big*, albeit temporary, changes as the GBC family. We are closing our worship space (sanctuary) to repair the ceiling. For those of you who don't know, the GBC ceiling has had cracks in it for years (since long before I arrived in the village!). After much planning, we have had it assessed, raised the necessary funds, and are finally in a position to repair it.

To carry out the repairs, we must move out for a period of four to six weeks. If you're reading this at the beginning of March, we are already mid-repairs. This is a complex, logistically challenging, somewhat stressful, energy-draining and uncomfortable season for us. But we are so excited to finally be doing it. On the one hand, it's a big change in the building, but it's a change that won't necessarily be visible to everyone. What's even more exciting than the repaired ceiling itself

is the process we are going through during these repairs.

As a church, every Sunday morning, we hold two services: Hymnal Praise (9.30am) and our Family Service (10.45am). These services have distinct flavours and styles, yet they require the same level of effort, technology, and reliance on our building space. In our Family Service, we run age-appropriate kids' groups, youth groups, and a space for parents with under-threes. Alongside the services, we gather as a church family over coffee, tea, and biscuits. There are so many moving parts!

For our Hymnal Praise service, we've relocated to the church hall. Meanwhile, our Family Service, being so large and reliant on multiple spaces, is meeting in the Eco Hub during this time. This brings with it the weekly challenges of setting up and breaking down – something many churches around the world are accustomed to, but which is entirely new for us. Some things will be different during this season; others will stay the same – but, through it all, we will grow and be stretched.

We also run the Backroom Café every Monday and on the third Sunday of the month. While this usually takes place in its own dedicated space, the café is heavily connected to the sanctuary, particularly given the number of visitors we welcome. With that space now unavailable, we've had to spread into the hall and adjust our logistics. It's a lot! And, to be completely honest, it's uncomfortable to change how we're doing things, even just for this season.

Why am I sharing all this? Well, I wonder if you might also be going through a situation that feels uncomfortable. Perhaps you're having to change aspects of your routine, your work, or your everyday surroundings.

Maybe those changes leave you feeling nervous, scared, or even overwhelmed. If so, you're not alone. I, for one, can tell you that I share those feelings – both in this situation and in others throughout my life.

In moments like these, I'm reminded of one of my favourite verses in scripture:

“Have I not commanded you? Be strong and courageous. Do not be afraid; do not be discouraged, for the Lord your God will be with you wherever you go.” (Joshua 1:9).

Joshua, like many of us, was facing a situation that felt daunting and beyond his comfort zone. He had been in one role for so long, familiar with what needed to be done, and suddenly he found himself in uncharted territory, with new responsibilities and challenges. God's reminder to Joshua was simple but powerful: “I am with you”. This verse encourages me – and hopefully you too – that even amidst stress, logistics, and challenges, God is with us. He provides courage and strength to face whatever lies ahead, and that is truly amazing.

If you'd like to chat about any of the changes or challenges you're facing, or simply to catch up, why not get in touch? You're always welcome to join us at the Backroom Café or at one of the many events happening at GBC. Let's face the changes together, with strength, courage, and faith.

Many blessings,

Rev Adrian Semerene

Lead Pastor, Gamlingay Baptist Church

adrian@gbchurch.org.uk

Tel: 07472 350860

X (formerly Twitter): [@asemerene](https://twitter.com/asemerene)

Instagram: [@asemerene](https://www.instagram.com/asemerene)



GBC Diary March

Sunday services

We meet every Sunday for services except the third Sunday of the month:

Hymnal praise at 9.30am

Worship service at 10.45am

As part of our Sunday services, we hold communion on the first Sunday of each month (2 March).

Services are live-streamed and recorded on:

www.gbchurch.org.uk/sermons

Third Sundays

The Backroom Café – opens

10.00am to 4.00pm every third Sunday of the month (16 March).

All welcome!

NEW

Unplugged Worship

from 6.00pm to 7.00pm every second and fourth Sunday (9 and 23 March) in The Backroom Café.

GBC kids and youth groups

Meet every Sunday (except for the third Sunday) at 10.45am for age-appropriate activities.

Small groups

These groups meet most days of the week, with daytime and evening options, plus women's prayer and study every second and fourth Saturday morning (8 and 22 March); get in touch with office@gbchurch.org.uk for more details.

The Backroom Café

Opens every Monday from 9.30am to 3.00pm.

Enjoy free coffee, cake and Wi-Fi. Warm welcome guaranteed!

Women's events

Contact women@gbchurch.org.uk for more information.

Men's breakfast

Contact mens@gbchurch.org.uk for more information.

Alpha

An opportunity to freely explore the Christian faith in a welcoming, friendly space!

Contact office@gbchurch.org.uk to register your interest.

Please consider following us on social media to keep updated with all our events:

Facebook.com/
GamlingayBaptistChurch
Instagram: @gb_church
X: @gb_church



GAMLINGAY COMMUNITY FRIDGE



OPEN MONDAY - FRIDAY
10 AM - 12 PM

- HELP REDUCE FOOD WASTE!
- SHARE FOOD YOU'VE GROWN!
- ALL FOR FREE!



LOCATED AT THE ALMHOUSE
CHAPEL, 62 CHURCH STREET

THE GAMLINGAY FOOD PROJECT
BROUGHT TO YOU BY
ST MARY THE VIRGIN CHURCH
AND GAMLINGAY BAPTIST CHURCH

CONTACT
ADMIN@GAMLINGAYFOODPROJECT.ORG
07307 349525

IN PARTNERSHIP WITH
CAMBRIDGE SUSTAINABLE FOOD



GAMLINGAY NEEDHUB PROJECT

EVERYONE HAS THE RIGHT TO FOOD.

YOU CAN PARTNER WITH US TO PROVIDE REGULAR FOOD PARCELS TO THOSE IN NEED LOCALLY.



LOCATED AT THE ALMHOUSE
CHAPEL, 62 CHURCH STREET

THE GAMLINGAY FOOD PROJECT
BROUGHT TO YOU BY
ST MARY THE VIRGIN CHURCH
AND GAMLINGAY BAPTIST CHURCH

CONTACT
ADMIN@GAMLINGAYFOODPROJECT.ORG
07307 349525

IN PARTNERSHIP WITH
CAMBRIDGE SUSTAINABLE FOOD



Got Questions?

Join us for Alpha!
Tuesdays starting
in January.

For more information email
alpha@gbchurch.org.uk



New Pet Supplies Shop in Gamlingay! Run by a Vet Nurse!

We Offer A Local Pet Food Delivery Service.

Visit: woofster-uk.com

VOLUNTEER DRIVERS

Community Transport Scheme

For more information
telephone

07519 493 701

VIOLIN & PIANO LESSONS

Instrumental teacher with 40 years experience of teaching the violin, piano and recorder as well as coaching chamber ensembles.

All standards and ages welcome.

AB graded exams and assessments up to diploma levels catered for along with music theory work, preparation for performances and auditions or just improving and enjoying your music skills.

Based in Gamlingay, fully insured with DBS check.

CARLA ROBINSON PPC RAM, LTCL
Contact: 0777 201 2928
gid.carla@gmail.com



GREAT GRANSDEN PRESCHOOL PLAYGROUP

A purpose-built playgroup for children from two years of age.

Recently awarded **outstanding** for the third consecutive time (2011, 2016, 2022)

Spaces available now

We accept funded two, three and four year olds
Visits and enquiries welcome!

Please see our website for information:

Email: gransden.playgroup@btinternet.com

Web: www.greatgransdenplaygroup.org

Tel: 01767 677 040

The Sportsfield, Great Gransden, SG19 3BG
Registered Charity No. 294026



News from the Churches

Parish Church of St. Mary the Virgin

Rector: Hilary Young

Rectory, 3a Stocks Lane

650 587

Churchwarden: Ann Davis

33 School Close, Gamlingay

07970 076 972

Parish Administrator:

gamlingaychurch@outlook.com

St. Mary's Letter for March

Dear Friends,

New Year 2025 seems to have raced on; surely it's not March already? Christmas events which had not happened when the January/February issue of the *Gazette* went to print have now faded into distant memory. The success and enjoyment of the shared Traditional Carol Service in Gamlingay was a particular highlight still worth hanging on to and hopefully reproducing next year.

New year charity concert

Our new year charity concert was very well-received again, raising over £500 for the church and Motor Neurone Disease Association on rather a murky Sunday afternoon. The musicians really came up trumps, despite some last-minute recruitment to adjust for changes to original plans. A special **thank you** goes to Angela and friends for the music, Nick for the wine and Peter Mann for publicity.

The event was such a success that there may be another concert in the summer, and we will certainly look to do a similar charity concert next January. It's not too early to be looking for sponsors and choosing a charity, so

do be in touch if you are interested and have ideas.

Annual Parochial Church Meetings coming up

As Everton Church and the community it serves embark on a project to secure the future of their historic building in the context of the community it has been part of for more than a millennium, our Church Councils both in Everton and Gamlingay with Hatleys are preparing for Annual Parochial Church Meetings (APCMs) at which reports and accounts are presented and Church Wardens and Church Councils are elected. For **Gamlingay** the APCM is this month on **16 March**, and for **Everton** the APCM is early next month on **6 April**.

This year will see a full renewal of the Church Electoral Rolls (not to be confused with the electoral roll of the secular parishes). Everyone who has been a member will have had to renew their membership to continue to belong. To qualify for membership, you have to be a baptised member of the Church of England and either resident in the parish or regularly worshipping

in the parish church. Membership of the Church Electoral Roll entitles you to be on, and vote for, the Church Council. Non-members can attend the meetings; all are welcome!

Easter plans

Easter is quite late this year – 20 April. The date is set from the lunar calendar and can fall on any Sunday between 22 March and 25 April. The season of Lent (40 days before Easter), which begins on Ash Wednesday (this year on 5 March) is therefore also quite late this year. Ash Wednesday is of course preceded by Shrove Tuesday, perhaps a date most people will take note of. We don't have plans as yet, but it is likely that there will be some hospitality on offer around that time – watch the Newsletters for more information.

Plans haven't been firmed up for **Lent study** this year, but the Anglican churches will be following the Church of England material on hope, which seems a particularly appropriate sentiment for this time when so much seems uncertain and difficult. Do let Hilary know if you would like printed material and/or an opportunity to meet with others during this time. There are likely to be sessions on Monday mornings (maybe taking advantage of hospitality at GBC?) and a weekday evening. Arrangements could be made to join online if there is interest. Please do get in touch to express interest in any of these.

Lent is a good time to take stock spiritually. We are encouraged to put down deep roots, so that our souls may be nourished, not only for this life, but for eternity. It may be a cliché (as indeed every truth can become), but Jesus really is the answer; we need to dare to ask the questions.

May Lent be a blessed time of discovery and hope for all our readers.

*Every blessing,
Hilary*

St Mary's Church Hall Gamlingay

located behind Church Cottage
next to St Mary's Church, Church Street
Gamlingay SG19 3JH



Available for hire every day
8.30am to 11.30pm

Ideal for meetings and parties,
£12.00 per hour

To book, please email
gamlingaychurchhall@gmail.com
or contact Ann Davis on
07970 076 972

Hatley Village Hall

1 Main Street, Hatley St. George, Cambridgeshire SG19 3HW

A pleasant, functional and roomy community facility
Available for hire every day from 8.30am to midnight

One user per session | Seats 80

Wi-fi available | Good acoustics

Excellent kitchen with an optional bar area

Perfect for gatherings, parties and meetings

New toilets with disabled and baby-changing facilities

Secure garden at the rear | Large car park

Hourly Rates

Private individuals and groups (residents) £9.00

Private individuals and groups (non-residents) £12.00

Commercial Lettings

£30.00 / first hour; thereafter £15.00 / hour

Minimum Charges

Friday or Saturday evening £55.00

Please visit www.hatley.info for hall availability,
booking form, photos and terms and conditions of hire

Or contact Kim Wilde on 07951 346 835

clerk@hatley-pc.gov.uk

Services for March

Sunday and festival services

Sunday 2 March: Sunday next before Lent (Quinquagesima)

- 9.30am: All-age Eucharist at St. Mary's, Gamlingay
- 11.15am: Parish Eucharist at St. Mary's, Everton

Wednesday 5 March: Ash Wednesday

- 9.30am: Ash Wednesday Eucharist at St. Mary's, Gamlingay with ashes
- 7.30pm: Ash Wednesday Eucharist at St. Mary's, Everton with ashes

Sunday 9 March: Lent 1

- 9.30am: Parish Eucharist at St. Mary's, Gamlingay
- 11.15am: Parish Eucharist with Baptism at St. Mary's, Everton

Sunday 16 March: Lent 2

- 9.30am: Parish Eucharist at St. Mary's, Gamlingay with a focus on healing followed by APCM and lunch
- 4.00pm: Evensong at St. Mary's, Everton

Sunday 23 March: Lent 3

- 9.30am: Parish Eucharist at St. Mary's, Gamlingay
- 11.15am: Parish Eucharist at St. Mary's, Everton

Sunday 30 March: Lent 4 – Mothering Sunday

- 9.30am: Parish Eucharist at St. Mary's, Gamlingay with posy distribution
- 11.15am: Parish Eucharist at St. Mary's, Everton with posy distribution

Other services and events

Wednesday Midweek Eucharists

- 9.30am: A said service of Holy Communion will normally be celebrated at St. Mary's, Gamlingay on Wednesdays in March

MEMORY LANE

- A support and social group for people with memory issues and their companions. All welcome.
- Every fourth Tuesday of the month.
- 2 – 4pm at Gamlingay Eco Hub



ONLINE ARTHRITIS ACTION GROUPS

JOIN US ON ZOOM TO MEET OTHERS, SHARE HINTS AND TIPS, AND LEARN ABOUT SELF-MANAGEMENT TECHNIQUES

REGISTER BY EMAILING EVENTS@ARTHRITISACTION.ORG.UK



THE GAMLINGAY

FOOD PROJECT

HOME OF COMMUNITY FRIDGE NEEDHUB

CONTACT

ADMIN@GAMLINGAYFOODPROJECT.ORG
07307 349525

BROUGHT TO YOU BY ST MARY THE VIRGIN CHURCH AND GAMLINGAY BAPTIST CHURCH

IN PARTNERSHIP WITH CAMBRIDGE SUSTAINABLE FOOD

Red phone box gets a spring clean

By Les Cirkel

The red telephone box outside St. Mary's Church was given a spring clean in February. I had a chat to the BT Engineer, who was refitting part of the sign and giving it a clean. He said it's a pity that these boxes sometimes get vandalised, but he was pleased to put this one in order. We agreed that so many people have mobile phones nowadays, but that the iconic red street phone boxes still have a value and purpose and should be kept in working order for all to use.



FREE COMMUNITY EXERCISE

Supporting those over 65 to remain independent

BOOK TODAY

01487 208150

community@fitnessrush.co.uk

MOBILE FACILITY

PROFESSIONAL TRAINERS

FRIDAYS FROM JAN 11TH 2025

CARE TOGETHER ALL ABILITIES



STATE-OF-THE-ART

We use a range of modern equipment to ensure our workouts are inclusive and accessible to everyone.



TAILORED PROGRAM

We understand that every individual has different needs and goals, so our tailored planning ensures you achieve long term results.



SUSTAINED WELLBEING

Not only will we help everyone begin, enjoy and benefit from fitness but our ongoing support allows our participants to continue their journey after the initiative has finished.

10:00 Gamlingay Eco Hub

11:15 Guilden Morden Village Hall

12:30 Caxton Recreation Ground

www.fitnessrush.co.uk/care-together

6 WEEK INITIATIVE



J Edward Bradshawe
Atcomputers
Contact-man.com

9 Honey Hill, Gamlingay, Sandy Beds SG19 3JU

Consultancy	Hardware supplies
Bespoke software	E-Trading systems
Web/Cloud systems	Computer system design

The Online Manager

Yourname.contact-man.com
All your contacts here online on all devices

Phone: +44(0) 1767 650 429
web: jedwardbradshawe.co.uk

GSOC

GAMLINGAY SCHOOL'S OUT CLUB

Annual report from Gamlingay School's Out Club (GSOC)

By Kim Wilde, on behalf of GSOC's committee

For those who are not already aware, Gamlingay School's Out Club (GSOC) is a volunteer-run, not-for-profit summer club that runs for one week in August, offering a wide range of activities to children in our village. In this article we bring you up to date with all the latest news and look ahead to summer 2025.

Changes to the committee

We are sad to formally report that **Paula Wilson** has stepped down from the committee after seven wonderful years of service. Paula was the first person I approached to discuss setting up a new children's summer club, as I knew she had the perfect blend of skills, experience, energy and enthusiasm to take on the tasks that lay ahead.

I am so grateful for Paula's unwavering commitment, determination and support; she has made an exceptional contribution to GSOC and she will be greatly missed as a committee member by us all. We are delighted that she will still be joining us for GSOC's club week in August. She is a friendly, familiar and respected face to the children and her attendance will help ensure that GSOC continues to thrive.

We are pleased to announce that **Janine Richardson** has stepped forward to join the committee, having provided some administrative support last year as well as volunteering during club week in previous years. We hope that Janine enjoys the next few frantic months of planning, as well as all the fun that follows in August!



Some of GSOC's teen volunteers

Changes to the age criteria for children attending GSOC

At our AGM we agreed that the age criteria for children attending GSOC 2025 will change to include only **children who are in school years 1 to 6** at the time of registration (April/May). We realise this will be disappointing news for families who have children in reception classes and year 7 and we'd like to emphasise that this measure has not been taken lightly – it is necessary to alleviate the significant oversubscription we have experienced in recent years. Last summer many children couldn't get the spaces they wanted, whilst others didn't get to attend the club at all. Changing the age criteria seems the most sensible and practical way to address this.

By way of background, when GSOC was founded in January 2018, Gamlingay Village Primary School (GVP) had approximately 240 pupils. The latest figures available suggest there are now over 400 pupils at the school. The club has grown from 90 children per session in 2018 to 120 children per session in 2024.

We won't know until our registration period closes in May what impact changing the age criteria will make – but we do know that we can't keep expanding the club in line with the expansion of the school. We simply can't accommodate a higher number of children due to the limited number of adult volunteers who help at the club and limited space in our classroom-based activities.

Please note the criteria for **children to be pupils at GVP and/or to live in Gamlingay** remains unchanged.

2024 was the two-time record breaker!

We were expecting the demand for spaces at GSOC to be high again last summer, as a result of the increases in both the number of new houses in the village and the pupil intake at GVP. However, what we had not anticipated was the speed with which the registration forms would be returned. To our amazement, all of GSOC's nine sessions had sold out within a record-breaking 15 minutes of the registration period opening (this involved a flooded inbox and a long queue of people at my front door from 9.00am). Wow!



Games in the large hall



The zorb racing arena



Serious concentration as banana chocolate chip muffins are at stake!



Construction car

This unprecedented demand for spaces forced us to re-consider GSOC's maximum capacity, which we increased from 100 to 120 children per session. We also opened a second lunch club classroom to allow a further 25 children to stay with us all day (9.30am to 3.30pm). In all, a total of 163 children registered to attend GSOC, with a record-breaking 79 children attending all nine sessions across the week.

Another busy week of creativity and active play

A fun-packed timetable was on offer last summer and the children kept themselves busy in all areas of play. Our craft queen Ruth provided a fantastic selection of things to create and take home, including sand art, t-shirt designs, balloon squishies, grassheads and fantasy-film dragonflies.

In the cooking room, the children baked many delicious treats including rainbow cookies, chocolate cupcakes, flap-jacks, and banana choc chip muffins. The MUGA was in use every day, with children of all ages and abilities playing football, as was the large hall where the children enjoyed games of table tennis, pool, table football and the electronic basketball shoot-out.

Extra-special activities: Zorbs, laser tag, circus skills and Science Boffins

Thanks to very generous donations from two Gamlingay families we were able to bring some very exciting experiences to the club. Making their debut at GSOC in 2024 were the **zorb racing arena and zorb human skittles**. This involved the children climbing into large inflatable balls to run and roll around the racing arena or towards the skittles: they absolutely loved it! We also brought back the **inflatable maze laser tag** game which was a huge success in 2023. We are extremely grateful for the donations that made these activities possible.

We also received sponsorship once again from **Dakram**

Materials Limited, enabling the children to enjoy a brilliant day filled with 'ooohs' and 'aaahs' as they became certified **Science Boffins**. The children were wowed by the jaw-dropping demonstrations and had the chance to undertake some exciting experiments, as well as making either sticky sweets or gooey slime. As you can imagine, they all had an absolute blast. We cannot thank Dakram Materials Limited enough for its continued support and we hope that between us we have inspired some future scientists!

From our own funds we also gave all the children a chance to join a **circus skills** workshop for the day, where they mastered plate spinning, juggling and much more.

GSOC's own mini golf course

Due to high hire costs, we decided to see if we could build a mini golf course of our own in 2024. To help with this, we were very grateful to receive financial support from



Science Boffins



Making balloon squishies



Sam Jones with the amazing mini golf course he created

both Gamlingay Parish Council and the Gamlingay Community Turbine Tithe Fund. However the icing on the cake was finding a talented local carpenter who offered to build the mini golf course for us, at an exceptional rate and taking many more voluntary hours than he had anticipated. So a massive thank you goes out to Gamlingay resident **Sam Jones** for his amazing workmanship, kindness and community spirit in supporting this project.

Sam's efforts were not in vain – we were over the moon with the children's reaction to the new mini golf course: it was played all day, every day by the children and was a huge hit with the teenage and adult volunteers too. And we know the new mini golf course will be enjoyed by future generations at GSOC for many years to come, thanks to Sam's professional carpentry.

Inflatable Friday brings club week to a close

Everyone loves 'inflatable Friday' – so much so that we pack away some of the toys in advance and the cooking room is closed. The inflatables always create a wonderful buzz of energy and excitement before the club closes. The children raced on the 46ft assault course, bounced and danced to the funky tunes inside the disco dome, and the younger ones also enjoyed playing on the bouncy castle/slide combo. We give a huge thank you to **Lucy Jane's Bakery (Potton)** for generously supporting this activity in 2024.

All that bouncing was followed, as has become another GSOC tradition, by the arrival of the much-loved ice-cream van. All children and volunteers were treated by the GSOC committee to a well-deserved ice-cream treat as a 'thank you' for supporting us and creating another week of fantastic memories for everyone.

Our outstanding team of volunteers

Having increased the number of children attending the club in 2024, we also had to source extra volunteers to make sure they were properly supervised. Thankfully we saw many returning helpers from 2023, and we warmly



Laser tag

welcomed some new faces too. The adults and teens always work so hard to ensure the children have an enjoyable time, so our biggest thanks are always reserved for these special people, as we cannot open our doors without them. We hope they will be able to spare some time to help us again this summer...and new offers of help are always appreciated too; please email gamlingaysoc@outlook.com if you are interested in volunteering in August 2025, or if you have any skills you might wish to share with the children during one of our sessions.

And finally, as always, we give sincere thanks to the **Cam Academy Trust**, the staff of **Gamlingay Village Primary School** and their exceptionally helpful Site Manager for providing the space and support required to set up and run the club. We could not offer such an amazing week of fun anywhere else in the village.

GSOC 2025 session dates

Looking ahead to the coming summer, GSOC will run from **Monday 11 to Friday 15 August 2025**:

- Morning sessions will run from 9.30am to 12.00noon each day
- Lunch club will be from 12.00noon to 1.00pm, Monday to Thursday only
- Afternoon sessions will be from 1.00pm to 3.30pm, Monday to Thursday only.

We will be based at Gamlingay Village Primary School once again and we are very pleased that we can continue to set the session fee at just £5.00 per child per session. It is important to us that the club is available and affordable to all.

Continued on page 19



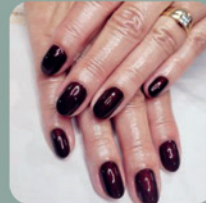
More fun in the large hall

SANCTUM

Beauty and wellness

over 40+ years in industry

Appointment only



We are a local beauty salon offering a full range of holistic and beauty treatments. Simply scan to find out more!



SCAN ME

the White Haus, Clopton farm, Lower Rd,
Croydon, SG8 0EF
www.sanctumbeautywellness.co.uk
01763449005



Rooms from
£1,000
per week



Inspected and rated

Good



Daycare from
£60 half day
£100 full day



BLACK SWAN
Care Group

Potton View Care Home

Potton View is a lovely care home on Potton Road in Gamlingay.

The home provides short term, respite care and longer term support for older people.

The rooms are decorated to an exceptionally high standard and feature ensuite facilities. There are large, communal living and dining areas and we have lovely, well-kept gardens where we host events with families and our local community.

Daycare, short-term and longer-term stays are available at the home. To find out more, please speak to our manager Zara or visit us online.

Tel: **01767 654866**

Email: **PottonView@blackswan.co.uk**

Web: **www.blackswan.co.uk**

Continued from page 17

Information packs and registration 2025

Information packs for GSOC 2025 can be requested **after 9.00am on Tuesday 22 April 2025** by email to Gamlingaysoc@outlook.com. Any requests for packs before this time will not receive a response. In reply to your email we will send you all the relevant information, including the activity timetable for you to discuss with your children.

Please note that, **unlike in previous years, the registration form will not be shared at the same time.** This is because we're hoping to roll out a new online registration form which will save money, save time, make the process easier for both families and organisers, and address issues arising from incomplete forms. At the time of writing we aren't completely sure whether the new online form will be ready this year, but our fingers are tightly crossed!

If things go to plan, we expect the **registration period to go live at 9.00am on Saturday 26 April**, which is when the online form can be requested by email. We will provide a formal update regarding the registration process, once we know for certain, via our Facebook page and the GVP school office. If any families believe they may experience difficulties using an online form, they are welcome to contact us by email to discuss this and to request a paper registration form.

As before, **payments must not be made until your booking has been confirmed by email.** Spaces will be allocated on a first-come, first-served basis on receipt

of completed paperwork/form and payment. The lunch club will be limited to 50 children, bringing their own packed lunches.

Future updates

We already have some exciting ideas in the pipeline for this summer and by the time you read this article we will have begun announcing some of them on our Facebook page. As well as all the latest updates, our Facebook page also contains posts from previous years which will allow you to see all that GSOC offers. Do take a look (and 'like' it) – www.facebook.com/gamlingaysoc. Please share information and updates with your friends and family who are not Facebook users if they are interested in registering their children this year.

We hope to see many of you in August and we thank you for your continued support.



Football on the MUGA



Rainbow cookies



Inflatable Friday



The GSOC Committee 2024



Historyman

by Nick Bruce

A Gamlingay Harvest

The grain harvest brings the village of Gamlingay to full life every summer, with activity both day and night. Some things have changed over the years, but others stay the same.

Over the years, most of the farms have stayed, some under different ownership or tenancy. Many of the old names are still there in our minds though – from the large farms like Merton College, Astors and Crossmans to slightly smaller set-ups like the Johnson family. Looking back 30 years or so, we have the Butchers, Smiths and Camerons along Potton Road, and then the really small harvesters who rented a few fields here and there and borrowed combine harvesters. These small harvesters would then sell the grain on to one of the bigger owners, and the straw bales they sold for bedding for horses and other animals.

One thing that has changed a great deal in harvesting is the cutting machinery, from hand and scythe to combine

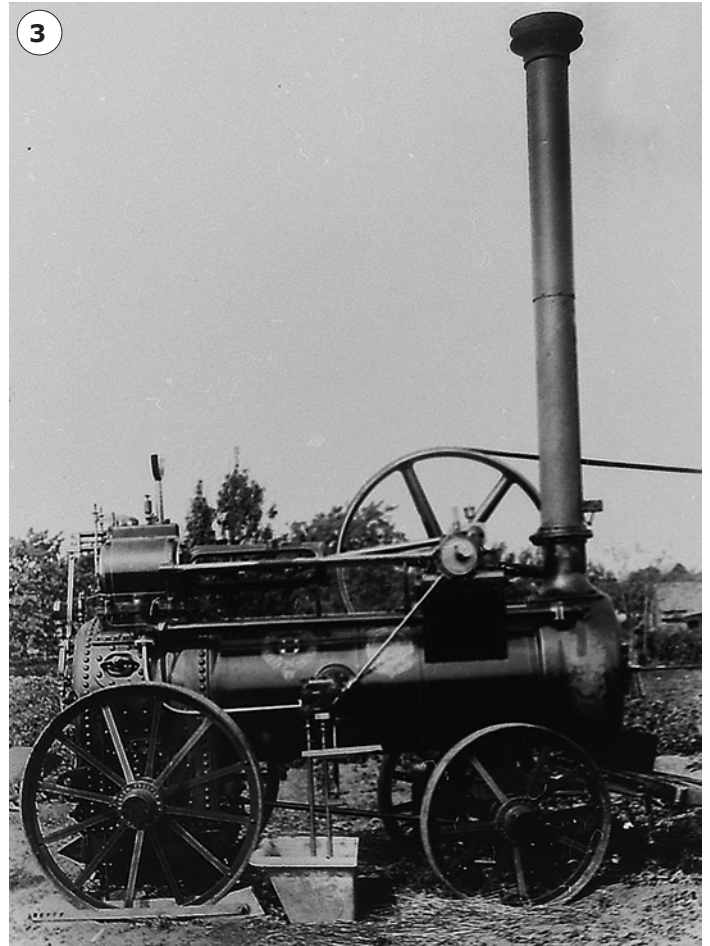
harvester. The combine harvesters themselves have grown from the early ones that could drive up our village streets, to those of today which are twice the width of the cutting deck.



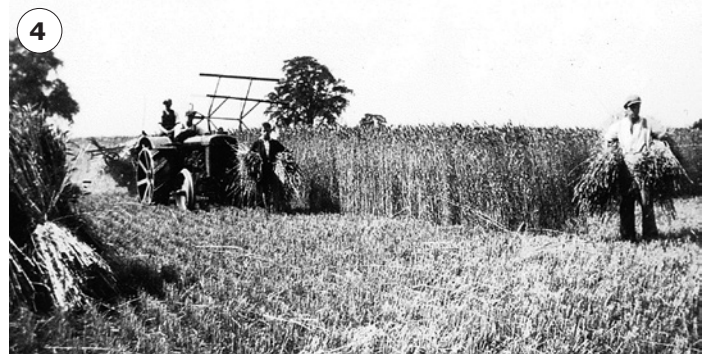
Pic 1: This photo is taken at Low Farm, off the Tetworth Hall Estate. This farm was rented by four generations of the Sharpe family, then owned by the Crossman family. One thing with renting from the Tetworth Hall Estate was that you had all the latest machinery – farmers would come in from elsewhere in the area to see them on display, as is happening in this photo here. They are watching the machine as it ploughs the ground; next it will be tilled, disced and raked, before the seeds are sown.



Pic 2: Here we have a typical scene of farm workers going to or coming from work; they would leave the machinery either in the field or at the farm, and go home by horse and cart. This photo shows a Brummagem cart at the Park Plantation during WW2. In this photo are Jim Titmus (standing), George Ellis, Sam Gilbert, Mr Arnold, Tom Jakes, George Gilbert, two unknowns – and Poll, the horse.



Pic 3: This is a horse-drawn steam threshing machine. It was used for many jobs during harvest, such as threshing and operating the lift to take the sacks of corn, sheaves of straw or hay to build the haystack (see pic 7) or put on the trailer to take back to the farms.



Pic 4: When the diesel-powered tractors came to farming, the actual cutting machinery started getting bigger and more efficient – as shown by this tractor on the Tetworth-owned Low Farm. You can just see the wooden paddles which took the sheaves to the back of the tractor. From there, they were sorted, tied and then stacked on horse-drawn carts, ready for delivery to the farms.



Pic 5: Here we have another photo from Low Farm, this time showing a full tractor and cutter. This particular machine was one of the first to come to England from John Deere in America on trial; it soon took off, and with it we saw the change in farming from manpower to machine power.



Pic 6: The next step up in tractor design was the specialised combine harvester and, as the three in this picture show, it was a major step. These early combine harvesters left the straw for the baler but took corn itself, which was then loaded into sacks on the back of a lorry. This is basically where we are today, except that nowadays the combines are even bigger, better, more efficient and – best of all – comfortable for the drivers.



Pic 7: Here we see workers at Merton Grange using an elevator to lift the straw to make stacks in 1940. Over the course of the 20th century, haystacks almost disappeared as most of the straw was burnt in the fields after being cut by the combine harvesters. It was an art in itself to burn a field of straw without burning trees, hedges and sometimes machinery. One man was always in charge of the burning, and would set alight at one corner and burn down and across at the same time, so that the fire would burn itself out.



Pic 8: This photo stays at Merton Grange and on the topic of the fine art of building stacks of straw. The task required three or four men, one of whom would be in charge of where to place the sheaves. It was important for the stacks to stay bone dry, so a thatcher would then thatch the top, to keep out the weather. Whatever straw the farm didn't use themselves could be sold to help pay the wages and run the farm.



Pic 9: Here we see workers at Merton Grange in 1940, busy getting the grain from the store hopper and weighing it into sacks. Merton Grange sent grain for bread-baking for both civilians and the armed forces during WW2.



Pic 10: We end with a typical end-of-the-day scene – the horse and cart men with a trailer-load of straw or hay to take back at the end of harvest.

*For more on the Historyman or any of my published books
either phone 07925 119 346
or email on nb777@btinternet.com*



**Wildlife Trust for
Beds, Cambs
& Northants**

A new nature club for GVP

Rebecca Neal from the Wildlife Trust BCN reports on exciting plans at the village school

Thanks to a grant from the Gamlingay Community Turbine Tith Fund, the Wildlife Trust for Beds, Cambs and Northants are working with Gamlingay Village Primary to support staff to set up an eco-club. They have decided to name this 'Nature Ninjas'! The funding will allow staff from the Wildlife Trust BCN to attend meetings with teachers and the community, to get the group off the ground, as well as directly support some sessions. There is also money to spend on resources.

Gamlingay pupils have their say

On our initial visit we discussed what the children would like to do. They were very keen to spend time outdoors – not just in their school grounds, but also visiting local green spaces like Millbridge Brook Meadows and Gamlingay Woods. They wanted to do practical activities to protect habitat and help wildlife, like making bird feeders and wildlife homes. They were also interested in learning how to identify wildlife, perhaps by doing activities like birdwatching.

Climate change came up in the conversation, and the children wanted to know more about how to stop it, how it affects things like wildfires and



At one of their first Nature Ninja sessions, pupils made bird feeders from seeds and apples. This one was later visited by great tits and long-tailed tits.

hibernation, and also how to help their school community reduce energy use. They were also keen to grow things in the school grounds.

Looking ahead – can you help?

It is vital that this new group is sustainable beyond the life of the funding that is helping to set it up. This means support is needed from the community. Over the next few months, we'll be connecting with Climate Action Gamlingay and Gamlingay Allotment Gardeners Association, and we'd also love to hear from locals who are keen to help out – perhaps you have skills, resources or access to future funding that might be useful. Please get in touch: rebecca.neal@wildlifebcn.org

Further information on our events, reserves (including site/path closures) and how to get involved can be found at our website www.wildlifebcn.org.

Do follow us on social media using the handle [@wildlifebcn](https://twitter.com/wildlifebcn) or reach out via cambridgeshire@wildlifebcn.org.

An update from the Gamlingay Show

by Jayne Dawkins, chair of the show

We are looking forward to the 2025 show, which will be on **Saturday 20 September!** The show committee have just had our first meeting, discussing this year's proceedings, and we wanted to update you on the latest news.

The application window is open for beneficiary requests!

Every year, the show committee uses the profit from the village show to make donations to local charities, clubs and organisations, as well as activities for the good of the community.

If you would like to be in with a chance of receiving a donation this year, please download the beneficiary request form from our website (www.gamlingayshow.co.uk/show-entry-forms), fill it in and email it back to gamlingayshow@hotmail.com.



Beneficiary rules apply, and all applications must be submitted by **31 March 2025**.

We need a new treasurer!

We also have an exciting opportunity to share: we are seeking a new treasurer to join the show committee! Our lovely current treasurer, Victoria Critchlow, has decided to hang up her boots after several years' dedication to the village show. She's done a brilliant job and kept us all in line, helping to make the show a success and financially viable every year. Over the years, this has enabled us to give out lots of money to various community

organisations within the village. Thank you, Victoria!

The treasurer is a crucial role that offers strategic and financial oversight for the show each year and works closely with the Chairperson, as well as the rest of the committee (currently seven members in total). Good knowledge of financial controls, budgeting and forecasting, as well as organisational skills, would be very advantageous. You would need to be available once a month for a committee meeting (sometimes via Teams, sometimes in-person).

This role, like all the committee roles for the Gamlingay Show, is voluntary. It offers a great opportunity to support a wonderful long-standing community event.

If you would like to get involved, we'd love to hear from you – drop us a line on gamlingayshow@hotmail.com.

Restoring Millbridge Brook

Local volunteers Emma Leaf-Grimshaw and Gwyn Williams report on plans for 2025

Regular users of Millbridge Brook Meadows may have noticed the deterioration in the condition of the brook in recent years. In this article we explain what has been happening, why, and how we will be looking for solutions in 2025.

What's been happening to the brook?

Back in 2012–13, the Millbridge Brook was essentially an agricultural drain, which was enhanced for nature by re-modelling the channel and installing 'current deflectors' made of willow (*Photo 1*).

The willow deflectors narrowed the channel and raised summer water levels while retaining the brook's ability to carry flood water. The result was a lovely brook during summer, with water plants and fish, that probably helped the return of water voles (*Photo 2*).

Over a decade later, the willow current deflectors have reached the end of their life. Silt and other organic matter is building up during summer, because the water flow is not powerful enough to transport it downstream. Scrub and tall vegetation is growing on the banks in some places, reducing sunlight to the brook and limiting the growth of aquatic plants (*Photo 3*).

What's next?

This year, the Friends of Millbridge Brook Meadows are delighted to have secured funding from the Gamlingay Community Turbine Tithe Fund (£886) and Cambridge Water's Pebble Fund (£1248) to undertake a project to get specialist advice, develop an action plan, and mobilise volunteers to restore the brook. We hope the result will be an improvement in both the physical condition of the brook and its water quality.

The first step will be a survey by river restoration expert Rob Mungovan, who helped design and implement the original project. Rob's survey will enable us to better understand what is happening to the brook and what steps can be taken to improve it. His findings will be used to create an action plan, with the hope that some of this work can be undertaken by volunteers. It is possible that heavier work

may be necessary that would require equipment operated by contractors and need additional funding.

A series of three volunteer working parties will be led by Rob later in the year, and will be widely advertised: watch this space, and we look forward to seeing you if you would like to join in!

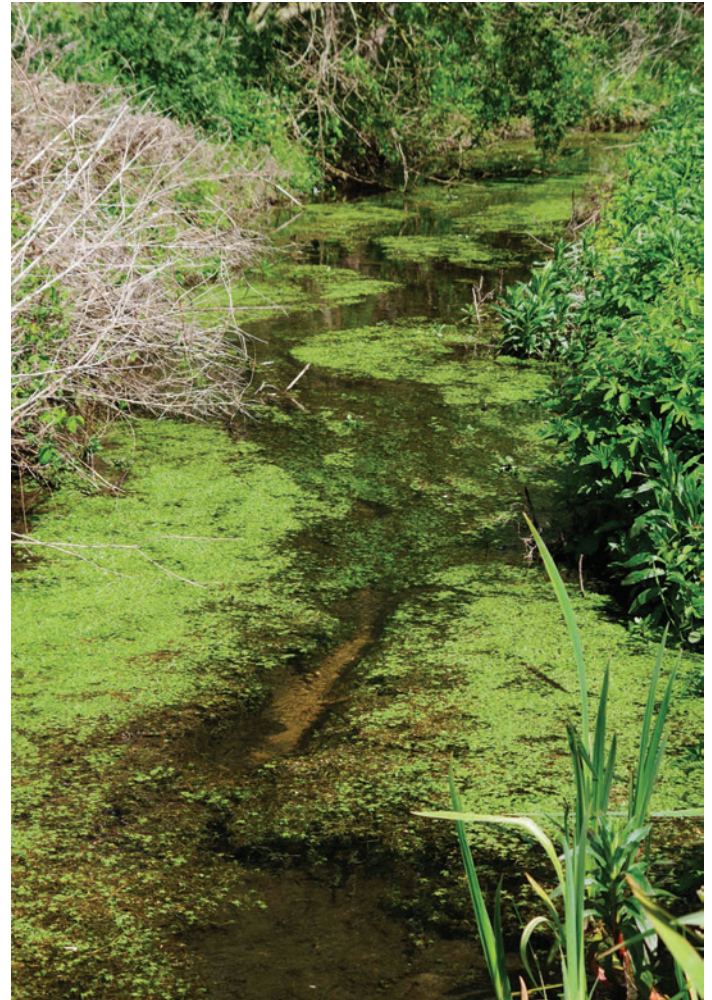


Photo 2: The brook in its prime, showing abundant water starwort (2019)



Photo 1: A willow current deflector

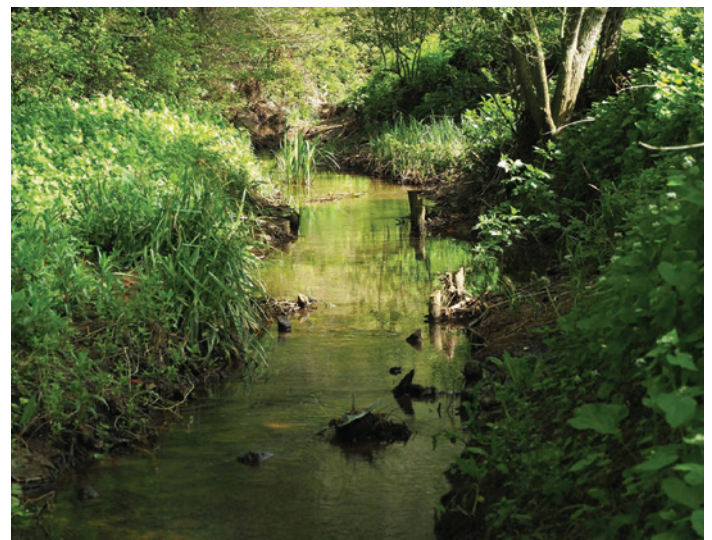


Photo 3: Deterioration in the brook

Bringing together two ancient crafts

By Gwyn Williams

In January, twelve volunteers teamed up to renovate a second length of hedge in Millbridge Brook Meadows using the ancient techniques of hedge laying and coppicing. This time a 50m length of hedge along the Station Road boundary of the Lower Meadow was the target. Planted in 2013, the hedge of hazel, hawthorn and rose had grown well and posed a tougher challenge than the main meadow hedge we renovated last year.

Renovating the hedge

Katherine and Ian from The Conservation Volunteers (TCV) helped us to create a Midland style 'conservation hedge', the idea being to retain as much of the existing hedge as possible to provide, for example, habitat for nesting birds. This is the process we followed:

- First, the hedge was 'faced-up' by removing branches facing towards us to give access.



The unrenovated hedge in December 2024



The coppicing of hazel in progress

- Next, left-facing branches were removed, this being the side where the stems (known as pleachers), once cut, would be laid down towards the ground.
- Next, every stem of the hedge was cut about 80% through, using saw and billhook, and laid towards the ground. The remaining stem (which is, in effect, a hinge made out of bark and cambium) is enough to keep it alive.
- Finally, hazel stakes were inserted along the length of the hedge and held together by plaiting long whippy hazel stems (known as binders) along the top.

The branches will, by the time you read this, have been chipped by the Parish Council's contractors and used as mulch for the hedge.

Sourcing the materials

This year, the hazel stakes and binders used in the hedge renovation were grown and harvested in Gamlingay Wood using the traditional woodland technique of coppicing. To harvest the wood, 'our' volunteers teamed up with the regular Wildlife Trust volunteers, led by wardens Barbara Saunders and James Bonfield.

We were given a warm welcome and guidance to do the coppicing well. First, the hazel stems are cut at the base



Bundles of processed stakes and binders ready to be taken from Gamlingay Wood to the meadows



Hedge laying in progress – staking and binding to the left, laying to the right

with a saw. The bottom part of the cut stem is then generally cut to create a stake (in our case, around 2m long), and the “whippy” upper part provides the binder of around 3-4m. If things are too spindly, then they might go for pea sticks! If you are interested in learning how to coppice, the Wildlife Trust team meets fortnightly on Sunday mornings through the winter and would be delighted to see you (see the ‘Conservation work parties’ section on their website).

The continued practice of coppicing in Gamlingay Wood

helps to sustain the wildlife of the wood. Hazels have been harvested from this wood for centuries to provide materials for many buildings in the village. With this project we were thrilled to continue that connection between wood and village, and to bring together two ancient crafts.

None of this would have been possible without financial support from the Gamlingay Community Turbine Tithe Fund and Parish Council, for which many thanks.



Binding



The completed hedge



The hedge-laying team (Photo: Gerald Savage)



This book celebrating ten years of Millbridge Brook Meadows is now available at the Eco Hub

All Green Landscapes

Mark is an award winning, fully qualified horticulturist with over 25 years' experience in landscaping.

We can provide:

- Patios & Decking
- Fencing
- Planting & Pruning
- Paving & Driveways
- Turf laying or seeding
- Full Liability Insurance
- Fully Guaranteed

For advice or a FREE quotation call Mark
01767 651126 or **07850397317**
 17 Plane Tree Close, Gamlingay
www.allgreenlandscapes.co.uk

greensleeves
LAWN CARE WITH PRIDE

We'll make your lawn the envy of your neighbours

With our ongoing lawn care packages, you can enjoy a beautiful-looking lawn all year round at no stress to you.

Get in touch today to find out more.
01767 651639
hunts@greensleeves-uk.com
greensleeves-uk.com

Reviews 8,500+ • Excellent*

UK's No1 most trusted lawn care provider

Led Greensand Ridge Walks

Join us for guided walks along Bedfordshire's premier route

The Greensand Ridge Walk is the perfect way to explore historic parklands, ancient woodland, and the heathlands of Greensand Country.

Sunday 4th May: Gamlingay Haynes (parking and coach from Haynes). Approx. 13 miles

Sunday 18th May: Haynes to Ridgmont (parking and coach from Ridgmont). Approx. 14 miles

Sunday 1st June: Ridgmont to Leighton Buzzard (parking and coach from Leighton Buzzard). Approx. 13 miles

Purchase your tickets here:

Get involved: www.greensandcountry.com

Greensand Country



Update from How Are You South Cambs?

Find details on a great range of activities and support at haysouthcambs.co.uk – some are listed below but there are plenty more...

New activities

haysouthcambs.co.uk/activities

- **Singing Mamas:** Waterbeach-based singing groups for women of all ages and life stages
- **MiniMe Mindfulness Cambridge:** positive mindset and mindfulness courses for preschool and primary-aged children
- **Thoughtful Thursdays:** Northstowe-based weekly drop-in for parents/carers
- **Fitness Rush Mobile Gym:** enables over 65s to benefit from free, dedicated one-to-one or group exercise sessions. *[Fitness Rush visit Gamlingay Eco Hub on Fridays at 10am]*
- **Active with Parkinson's Cambs (AWPC):** runs a variety of weekly exercise classes in Shelford & Stapleford specifically for people with Parkinson's Disease
- **Walking Football for People with Parkinson's:** sessions specifically in Sawston & Impington for people living with Parkinson's disease or other conditions that affect mobility
- **Groups In Other Languages in Cambridgeshire & Peterborough:** helps you find a group or activity in Cambridgeshire or Peterborough that celebrates and shares a non-English speaking culture or nationality

New support groups and networks

haysouthcambs.co.uk/support

- **Child Weight Management – Healthy You:** free healthy lifestyle programmes to help build healthy habits that stick
- **YOUnited Referral Hub:** self-referral pathway to support children and young people's emotional wellbeing and mental health
- **HI Friends Coffee & Connect SEND Support Group:** free Histon-based monthly support group for parents and carers of children/young people with additional needs
- **Define Fine:** peer support for parents of children with school attendance difficulties
- **National Autistic Society – Cambridge Branch:** support, information and signposting to autistic people of all ages and their families and carers, including social club for autistic adults in Chesterton and support group for carers in Orchard Park
- **Cambridge Mental Health Network (CMHN):** brings service providers together from the public and voluntary sectors, helping them to learn from each other and making it easier to find out what's on offer locally

- **WorkWell South Cambridgeshire & Royston:** free service to help people who may be struggling to find or retain a job due to their physical and/or mental health
- **NHS East of England Gambling Service:** helps those who are negatively affected by their own or others' gambling
- **HI Friends Carer Café:** meets in Histon/Impington on the second Thursday of each month
- **Melbourn Armed Forces and Veterans Breakfast Club:** does what it says on the tin!
- **Victim & Witness Hub – Cambridgeshire Constabulary:** independent, confidential service supporting victims and witnesses of crime

Courses

- **RCE Wellbeing Hub Courses for 2025:** free in person and online courses from Jan-April on topics including Chronic Fatigue, ADHD, anxiety, low mood, autism, food & mood and lots more
- **Hope Again Bereavement Support:** group-based bereavement support programme on Thursday afternoons from 6 March to 10 April 2025 in Histon
- **Healthy Relationship Courses for Parents:** free courses to support parents who want to communicate in a healthier way
- **Cambridgeshire Skills Cost of Living Café:** free, flexible online course to help manage the rise in the cost of living and the impact this may be having on day-to-day life
- **Healthy You:** free training to support those working in the public and voluntary sectors to develop an understanding of public health and how having healthy conversations is everyone's role; includes mental health first aid training, smoking cessation and much more
- **Leading a Mentally Healthy Workplace Skills Bootcamp:** 13-week programme to equip leaders with the essential skills to create and sustain a mentally healthy workplace

Funding

- **Health Inequalities Funding – Assura/ICB grant programme:** Voluntary sector organisations can apply for up to £12,000 to fund projects that work with local people to tackle health inequalities and promote wellbeing at an Integrated Neighbourhood level.

Charity Green

Digital & Community Engagement Coordinator
(South Cambridgeshire)

E: Charity.Green@cpft.nhs.uk | T: 01733 836197
haysouthcambs.co.uk

Wellbeing wisdom

Cinques resident and wellbeing expert Abi Lawrence shares her tips for March



Marching on:

Revisit, refresh, and renew your goals this spring

January and February have come and gone and, for many of us, the enthusiasm for our New Year's resolutions may have faded. Perhaps you started strong, but life got in the way. Or maybe you didn't set any resolutions at all, thinking it was "too late" once we were a week or two into January. If that sounds familiar, let me reassure you: **it's never too late to start again.**

Resolutions don't need to be tied to a calendar date anyway! Indeed, every day is an opportunity to reflect, reset and recommit to the goals and intentions that matter to you. The important thing is to be kind to yourself and take small, meaningful steps forward. If January and February didn't go to plan, why not make March the month you try again?

Here are a few tips to help you refocus and move forward:

- 1. Start small:** Big, sweeping changes can feel overwhelming. Instead, choose one small action that moves you closer to your goal. For example, if your goal is to improve your health, commit to drinking an extra glass of water each day or to taking a ten-minute walk.
- 2. Reflect and refine:** Take a moment to assess why your original plan may not have worked. Were your

goals realistic? Did you have enough support? Adjust your approach to make it more achievable.

- 3. Focus on progress, not perfection:** Do this, because progress is more important than perfection. Celebrate your small wins and don't let setbacks derail you. Every step forward is a step in the right direction.
- 4. Seek support:** Don't be afraid to ask for help. Whether it's a trusted friend, family member, or a personal coach, having someone to encourage, guide, and support you can make all the difference.
- 5. Be kind to yourself:** If you miss a day or two (or ten!), resist the urge to be self-critical. Treat yourself with the same compassion you'd offer a friend and give yourself permission to start fresh.

Remember, resolutions are not about perfection but about growth. I encourage you to take this opportunity to take a deep breath, refocus, and make a resolution to be kind to yourself. The best time to start is now – especially with spring in the air – and you still have everything you need within you to create a meaningful and fulfilling year ahead.

Abi Lawrence, alignwellbeing.co.uk

Booking open for the next Repair Café!

by Climate Action Gamlingay

Do you have something broken that you can't fix, but can't bring yourself to throw away? Something like a toaster, lamp, bag, jumper, necklace or computer? Then why not book it in and bring it along to the next Repair Café, which will be held on **Saturday 10 May** from 1.00pm to 4.00pm at the Gamlingay Eco Hub.

Our team of volunteer repairers will pinpoint the problem and try to fix it on the spot, or let you know what spare parts to get for when you come back next time. This service is offered free of charge (though donations are welcome to help cover our costs and grow our network).

As we have written in previous issues of the *Gazette*, Repair Cafés are a great way to bring our community together, save money and help the environment at the same time. Over the last two Repair Cafés, Gamlingay has saved an amazing total of 1,161kg of CO₂ and prevented 125kg of items from going to waste. In 2024 we repaired beautiful necklaces, mended bags, sewed jackets and trousers, fine-tuned bicycles, and fixed radios, record players and even lawn mowers!



The Repair Café has proven so popular that we have decided to open booking earlier this time around. To secure your place, fill in our online form at shorturl.at/w0wY4, message our Facebook page, email us on gamlingayrepaircafe@gmail.com or pop in when the Library is open at the Eco Hub.

Councillors' Column

Keeping us up-to-date on South Cambridgeshire District Council (SCDC) and Cambridgeshire County Council (CCC) matters.

Your councillors are always ready to help.

If you have any questions about the following matters or, indeed, any other council matter that you may need help with, then please do not hesitate in contacting: Bridget Smith, your District Councillor at Cllr.BridgetSmith@scams.gov.uk, and Sebastian Kindersley, your County Councillor, on 01767 651 982, at skindersley@hotmail.com or write to Manor Barn, East Hatley SG19 3JA and follow on X (formerly Twitter) @SebKindersley and on Facebook.



Cambridgeshire
County Council



Councillor
Sebastian Kindersley



South
Cambridgeshire
District Council



Councillor
Bridget Smith

Elections in May

Local elections will be held on **1 May 2025** for the Mayor of Cambridgeshire & Peterborough and for all 61 Divisions of Cambs County Council, including the 13 Parishes of the Gamlingay Division.

Your current County Councillor, Sebastian, says: "It has been a tremendous privilege to represent local people and communities since 1999, but I have decided not to put my name forward again. If you would like to know more about the role, or are considering standing (for whatever party, or none) I would be very happy to answer any queries or concerns you might have. Please do feel free to get in touch."

An overview of proposed changes to local government organisation

The government published its Devolution White Paper just before Christmas. This paper sets out proposed changes to local government across the country, which would affect South Cambs District Council and Cambs County Council.

One of the most significant proposals is the creation of unitary authorities where there are currently two-tier

councils – such as in our region. It is expected that newly created unitary authorities would have populations exceeding 500,000 (but there may be exceptions). Essentially, this means fewer councillors, each responsible for much larger areas.

The rationale for creating unitary authorities is efficiency savings (£2.3 billion) and service improvements. The White Paper proposes a phased implementation and emphasises the importance of maintaining community-level engagement despite the larger size of unitary authorities compared with our local district and city councils. The paper also discusses changes to the way that councils are funded, including a review of the business rates retention system.

Many councils are challenging aspects of the paper and expressing grave concerns about losing what is truly local in Local Government. There is a concern that people will no longer know who their councillor is, and councillors will no longer have the sort of close relationship with their communities which we currently enjoy.

Additionally there are concerns that the reforms will take years and cost millions of pounds to implement – money that could be spent on the discretionary things councils currently do (such as helping people struggling with the cost of living).

Public consultation on South Cambs four-day week

A public consultation is currently underway to allow anyone, anywhere to share their views on South Cambs District Council's services during the trial of the four-day week. The information gathered during the consultation will help District Councillors decide on the next steps for the four-day week at the Council.

You can take part by visiting engage.scams.gov.uk/en-GB/folders/four-day-week. The closing date for responses is 11.59pm on **Sunday 23 March**.

As a brief reminder of the background: the four-day week trial (where

council employees deliver 100% of their work in around 80% of their hours, for 100% of their pay) was designed to help address acute recruitment and retention issues. The aim was to fill vacant posts permanently, improve service and reduce costs. So far the trial has been evaluated independently by two universities and financially assessed. Results were positive, including a known full-year cost saving of £371,500.

For a full report on the findings, please refer to the 'Councillors' Column' in the September 2024 issue of the *Gamlingay Gazette* [available online if you have already recycled your print copy – Ed].

Council budget

By the time you read this, Cambridgeshire County Council will have set its budget with recommendations being considered in advance by the Strategy Resources & Performance Committee. Each year councils are required to set a balanced budget for the year ahead. This has become more difficult in recent years for several reasons, including:

- Growing demand for services and increasing complexity of health and care needs
- Inflation
- Market failures in services such as provision for children in care – with high demand, insufficient supply, provider profiteering, and diminished council negotiating power.

The totality of the council's gross budget, including schools and services funded by specific grants, is expected to be over £1.1 billion for 2025–26. Of this, over half (£567 million) is proposed to be spent on children, education and families, and health and adult social care.

In December, councillors were told that efficiencies/savings or additional income of £34 million would be needed to set a balanced budget for 2025–26, and considered draft proposals to achieve this. However, the coming five years show an overall funding gap of

£132 million, of which £73 million is not yet addressed.

Mayor's precept held

The Cambridgeshire & Peterborough Combined Authority has decided not to increase the Mayor's precept (which is currently £36 per band D property).

Council Tax increase for vacant properties

From April 2026, Council Tax will be doubled on long-term vacant properties in South Cambridgeshire as an incentive to bring the estimated 2600 empty properties in the district into use. Exemptions exist for properties that are on the market, subject to probate or are under renovation.

This approach has been used successfully by other councils to bring properties back into use and is expected to help address the high demand for housing in the district. It is estimated that the change will generate an additional £100,000 a year in income for South Cambridgeshire, which will help support vital frontline services.

Cambridgeshire's Silicon Valley?

In January, the government announced plans for the "Oxford to Cambridge Growth Corridor" and referred to creating "Europe's Silicon Valley". The plans include a new railway line running from Oxford to Cambridge, the upgrade of the A428 and a new cancer hospital, as well as plans for a new reservoir in the Fens – all of which we already knew about.

One new element to the proposals though was the confirmation that there will be a new station at Tempsford as part of East West Rail. This

will definitely open up the surrounding area for significant large-scale development. Though at first sight this may seem worrying, focusing development on large new communities does give quite a lot of protection to villages such as ours from over-development.

The government also suggested that the Environment Agency was no longer objecting to planning applications in South Cambridgeshire. This applies only to our current local plan, and not to the emerging one that we are preparing jointly with Cambridge City, nor to the 150,000 additional houses that the Housing Minister is talking about. No mention was made of the problems Anglia Water are having in respect of waste water capacity, which is jeopardising growth.

As your local councillors we welcome the government's recognition of Greater Cambridge's importance to the UK Economy. To achieve its full potential though, this region also needs tangible commitments to better public transport across our entire region, improved access to GPs and dental services and far more affordable housing.

Streetlight replacement programme

Work began in January to replace most of our existing streetlights with newer, more efficient LED lights, with the aim of cutting energy consumption from streetlights by more than half.

This is vital to achieving our goal of net zero carbon emissions by 2030 and, in addition, the new energy-efficient LED lighting will significantly reduce future spending on streetlighting.

Cambridgeshire County Council is responsible for more than 53,500

streetlights, approximately 47,500 of which will be replaced by May 2026 under this scheme. Work in Gamlingay is scheduled for May 2025.

£10 million for road maintenance

The Government has announced how much each council area will receive for highways capital maintenance for 2025–26. For the Cambridgeshire & Peterborough area the sum is £10 million – which sounds a lot. However, this sum covers Peterborough as well as Cambridgeshire and up to £2.5million of it will be held back until councils have proved they will meet certain criteria, which have not yet been announced. In Cambridgeshire alone, the backlog of highways maintenance is around £600 million.

HGV-free zone?

In last month's edition we asked for your views about a 'No HGV Zone' across the area – a plan currently being mooted by Central Beds Councillors. Responses have been few – less than five in fact, most of which supported a ban. However, this is nothing like a mandate, so we will continue to learn about what Central Beds proposes and ask for much stronger public feedback locally before supporting any changes. We are still keen to hear your thoughts, so do drop us a line.

20mph funding applications now open

The 20mph funding programme for 2025–26 is now open for new applications. Applicants who were long-listed last year can also review, update and reapply if they wish. The deadline is 5.00pm on **Friday 28 March 2025**.

SCOTT ROOFING LTD

Roofing Specialist

Your local traditional Roofer
Free quotations and advice

All roofing works undertaken:

tiling - slating - felt flat roofs - repairs - chimney re-pointing -
insulation - fascias/gutters - moss removal - new roofs - lead work

Call Scott:

Mob 07834 777 134

Tel 01767 651 626

Proudly serving the village for over 15 years

SINCLAIR ELECTRICAL

Domestic electrician

- Lights and sockets
- Security lighting
- New fuseboxes
- Full rewires
- Extension wiring
- Showers and cookers
- All household electrics

35 years experience
Part P registered

Call John on
01480 273 927
07815 903 467



Gamlingay Social Club



A family-friendly community Social Club

*We warmly welcome new members into our
comfortable and spacious venue.*

Come along, bring the family, and try us out.

Bring this advert with you for free entry (excludes entertainment nights)

- Snooker table
- Pool table
- Dartboards



Regular programme of
entertainment evenings

Bingo
Friday evenings
Quiz Night
every other Thursday evening
...new teams welcome

Most competitive drinks in the village

Beers from £3.95 | Spirits from £2.90

Fully air conditioned | Available for hire

See our Face Book page for more information

16 Waresley Road, Gamlingay SG19 3EJ

All the information is available at www.cambridgeshire.gov.uk (search for "20mph funding"), or contact Local.Projects@cambridgeshire.gov.uk. Following feedback (for which, thank you!) the website has been improved since last year.

North Lane illegal access

Please do not take cars from North Lane directly on to Drove Rd through the illegal access that has recently been created. The reason that this route was closed off is that it was extremely dangerous, and we have already seen a number of tragic accidents close to where the access has been created in recent years.

Bus fare and franchising update

Nationally the Government has increased the bus fare cap to £3.00 per journey. However, the Cambridgeshire & Peterborough Combined Authority has agreed to maintain the current bus fare cap at £2.00 per journey until March, after which it will increase to £2.50.

The Combined Authority has also decided to go ahead with the principle of bus franchising – more on this in the coming weeks.

Help with water bills

If you are struggling with your water bills, you might consider reaching out to Anglian Water. Their Extra Care Support team can help make a payment plan tailored to your needs and point you towards other benefits you may be eligible for. They have helped over 350,000 customers over the last year.

For the first time this year they are also offering a discounted tariff for those with certain medical needs. Find out more from www.anglianwater.co.uk/help-and-advice/water-care/extra-care-support/.

The Herbert Protocol

The Herbert Protocol is a police-supported scheme that can help officers search for people with dementia if they go missing. It encourages family and friends to keep a document collecting key information such as a physical description, familiar places, health details and an up-to-date photo. Feel free to share this post and help spread the word about this important scheme.

Keeping a completed form means you don't have to try to remember the information when you are under stress, and it saves time, so the police can start the search sooner. The Herbert Protocol form can be found on the Cambridgeshire Constabulary website, cambs.police.uk.

UK-wide Day of Reflection

A UK-wide Day of Reflection for the COVID-19 pandemic will take place on **Sunday 9 March 2025**.

The COVID-19 Day of Reflection is an opportunity for communities across the UK to come together in reflection and commemoration for those who lost their lives and for everyone impacted by the pandemic.

On the day itself and in the week before, the public will be able to mark the day in ways that feel most appropriate and fitting to them, both in person and online.

More at dayofreflection.campaign.gov.uk/about/.

Hare coursing

The police are investigating an unprecedented large hare coursing event in East Cambs and there have been incidents in some villages local to Gamlingay. Vehicles and dogs have been seized, and hundreds of images will be used to identify those involved – but hare coursing continues partly because of the huge sums of money involved. The police are keen to hear from anyone with any information and footage that could assist in identifying those involved – please email OpCalluna@cambs.police.uk or contact Crimestoppers, anonymously, by calling 0800 555111 or via their website, crimestoppers-uk.org.

Your Councillors are here to help you. Please do feel free to contact us with comments, questions, problems or complaints. We hope we can help but if we can't we are likely to know someone who can!

GARY HARE

Property Improvements

All aspects of carpentry,
internal/external doors
Real wood/laminate floors
Bathrooms
Kitchens designed, supplied, fitted
Ceramic wall and floor tiling
External and internal painting,
decorating and wallpapering
Complete property refurbishment

Telephone: 01767 651 821
Mobile: 0777 397 3420

City and Guilds
25 years experience

DO YOU LIVE OR WORK IN GAMLINGAY?
Could you spare a couple of hours per month to give back to the local community and help look after our village?

JOIN THE PARISH COUNCIL!
Gamlingay Parish Council is looking for more councillors to join the Council.

- YOU NEED TO BE A RESIDENT WHO LIVES, WORKS OR OWNS LAND IN THE PARISH FOR A MINIMUM OF 12 MONTHS.
- YOU MUST BE OVER 18 YEARS OLD.
- TRAINING WILL BE PROVIDED.

Find out more:
www.gamlingay-pc.gov.uk



GAMLINGAY PARISH COUNCIL
01767 650310
Eco Hub,
Stacks Lane,
Gamlingay
SG19 3JR

ELECTRICIAN



- Specialist In Fault Diagnosis
- Friendly & Reliable
- No Job To Small

Call Mike On
07791520731
mjasparks@gmail.com



Clarke Midgley

Professional, reliable & trustworthy
PAINTER & DECORATOR
Established 2002



Call **07904 585 963**
or email
psychosibes@gmail.com



Gamlingay Netball Club

Winter league 24/25 Bedford League:

Week commencing 6 January

Jets 38 – 58 BCNC 1st Choice
Umpire's players: Jo Rickard | *Players' player:* Jo Rickard

Storm 24 – 42 Cranfield Comets
Umpire's player: Laura and Ashlea Valentine
Players' player: Laura and Carly Brown

Tigers 81 – 28 Luton Tornados
Umpire's player: Ashlea Valentine
Players' players: Ashlea Valentine, Jasmine Wilson and Holly Radford

Panthers 26 – 23 CIS Spirit
Umpire's player: Janet Lower | *Players' player:* Ruth Dennison

Week commencing 13 January

Tigers 57 – 32 Kestrels
Umpire's players: Ashlea Valentine | *Players' player:* Holly Radford

Panthers 25 – 51 Hillson Ladies
Umpire's player: Jenni Stout | *Players' player:* Janet Lower

Thunder 12 – 31 Silsoe Sirens
Umpire's player: Helena Hall | *Players' player:* Jess Warmoth

Week commencing 20 January

Jets 57 – 47 St Neots Diamonds
Umpire's player: Jo Rickard and Kelly Knibbs
Players' player: Nikki Webb

Tigers 42 – 62 Grangers Hurricanes
Umpire's player: Alex Arnold and Nikki Morris
Players' players: Pip Nash and Jasmine Wilson

Panthers 35 – 24 Riverwood Blackjacks
Umpire's players: Koryn Titley | *Players' player:* Cerys Steward

Thunder 7 – 35 Maulden Kittens
Umpire's player: Blessing Ebisan
Players' player: Blessing Ebisan and Shelley Nicholas

Week commencing 27 January

Jets 64 – 37 A Line Flyers
Umpire's player: Charlotte Garbutt
Players' player: Nikki Webb and Aislinn George

Panthers 24 – 16 Pandas
Umpire's player: Koryn Titley | *Players' player:* Ruth Dennison

Thunder 19 – 29 Westoning Emeralds
Umpire's player: Blessing Ebisan
Players' players: Blessing Ebisan and Shelley Nicholas

Heritage League

This includes a cup competition (Jets, Storm and Tigers) and a league competition (Panthers and Thunder). The cup is played in quarters; you get two points for winning the quarter, one point for a draw, and zero for a loss.

Week commencing 6 January

Jets 6 – 2 Priory Fusion
Umpire's player: Gemma Lingard | *Players' player:* Sarah Bircham

Storm 0 – 8 Onyx
Umpire's player: Laura Sanders | *Players' player:* Millie

Tigers 8 – 0 St Neots Emeralds
Umpire's player: Ashlea Valentine | *Players' player:* Ashlea Valentine

Panthers 29 – 21 Galaxy Solars
Umpire's player: Mads Dyke and Fern Davidson
Players' player: Mia Wright

Thunder 32 – 24 Baldock Royals
Umpire's player: Blessing Ebisan | *Players' player:* Fern Davidson

Week commencing 13 January

Jets 8 – 0 Shefford Sirens
Umpire's player: Katie Smith | *Players' player:* Aoife McDonagh

Storm 0 – 8 NH Knights
Umpire's player: Emily SJ | *Players' player:* Ella Moore

Tigers 8 – 0 Ravens
Umpire's player: Pip Nash | *Players' player:* Kathy Jackson

Panthers 47 – 15 Blaze
Umpire's player: Mia Wright
Players' player: Mia Wright and Charlotte Masdin

Week commencing 20 January

Jets 8 – 0 Zebedee
Umpire's player: Jess Pike | *Players' player:* Nikki Webb

Storm 0 – 8 Priory Fusion
Umpire's player: Laura Saunders | *Players' player:* Tiffany Smith

Tigers 8 – 0 Stratton Swifts
Umpire's player: Alex Arnold | *Players' player:* Meg Jones

Panthers 26 – 45 Galaxy Asteroids
Umpire's player: Cerys Steward | *Players' player:* Janet Lower

Thunder 22 – 73 Hitchin Gems
Umpire's player: Jemma Rowland
Players' player: Rebecca Ahern and Lucy M-D

Week commencing 27 January

Jets 8 – 0 Storm
Umpire's player: Matilda P | *Players' player:* Nikki Webb

Storm 0 – 8 Jets
Umpire's player: Laura Saunders
Players' player: Aislinn George and Jordan Gosselin

Tigers 8 - 0 Galaxy Stars
Umpire's player: Ashlea Valentine | *Players' player:* Ashlea Valentine

Thunder 22 – 15 Cobras Green
Umpire's player: Jenny Manning | *Players' player:* Jenny Manning

February marks the end of the Heritage League cup competition for all teams and we are proud to confirm that **Jets and Tigers have both made it into the cup finals** for their respective divisions.

The **Premier Division cup final**, Jets vs Astros, will take place on **Tuesday 1 April at 7.15pm** at Stratton School in Biggleswade.

The **Second Division cup final**, Tigers vs Galaxy Stars, will take place on **Monday 31 March at 8.30pm** at Stratton School in Biggleswade.

All supporters are welcome and encouraged – come on Gamlingay!

If you are interested in joining the club, please email gamlingaynetball@gmail.com



Gamlingay United Football Club

Latest results

U7s

- 30/11 vs Whittlesford (away)
Won 0-7
Goals: Zac 3, Alfred 2, Patrick, Elliot
POM: Tommy
- 18/01 vs Haverhill (home)
Lost 0-13
POM: Edward
- 25/01 vs Isleham (away)
Lost 6-1
Goals: Alfred
POM: Carson

After building some momentum, there was a long break due to the weather and change of leagues – but the team are now back playing and really enjoying their first season of football.

U8s

- 18/01 vs Saffron Walden (away)
Lost 7-1
Goals: Elsie
POM: Hayden
- 25/01 vs Chesterton Eagles (away)
Lost 7-3
Goals: Frankie 2, Evan
POM: Frankie

The U8s have continued to progress within their league and finished 2024 well. The new year started with a loss to an unbeaten team but the team are now starting to practise the transition to seven-a-side and they seem ready for the challenge!

U9s

- 30/11 vs Cottenham Red (away)
Won 0-4
Goals: Leyton, Humphrey, George, Jamie
POM: The entire squad

Started slow but the last two quarters were excellent.

- 18/01 Cup vs Cherry Hinton (home)
Lost 1-9
Goals: Ellis
POM: Jamie

Cup match against a division one side. Although we played well we were unable to match the physical strength of the opposition.

U10s



- 18/01 vs Saffron Walden Reds (away)
Drew 5-5
Goals: Sam 4, Zac
POM: Henry
- 25/01 vs Newmarket Yellows (home)
Won 3-1
Goals: Ezra 2, Sam
POM: Mason

The U10s have made a good start after being moved up to the second division. A great team spirit has led to a win and a draw in a very competitive group. Playing some great football and playing for each other.

U11s



- 18/01 vs Swavesey (home)
Won 2-1
Goals: Max, Jay
POM: Esme

U12s



- 14/12 vs Girton (home)
Lost 1-3
Goals: Noah
POM: Jack
- 18/01 vs Mepal (home)
Lost 1-2
Goals: Tomas
POM: Seth
- 25/01 Cup vs Cottenham (away)
Won 2-7
Goals: Ollie G 2, Mason, Josh, Woody, Oliver H, Noah
POM: Noah

U14s

- 30/11 vs Milton (away)
Won 0-5
Goals: Dean 2, Jacob 2, Harry
POM: Dean
- 14/12 Cup vs Isleham Reds (home)
Won 9-1
Goals: Bohdan 4, Archie, Brodie, Mustafa, Zach and OG
POM: Bohdan
- 25/01 vs Coton (away)
Drew 3-3
Goals: Dean 2, Freddie
POM: Brodie

U14s on a good unbeaten run in league and cup. Only one loss all season but some tough games on the horizon, including a cup semi-final.

U16s

- 30/11 vs Bottisham (home)
Won 3-0
Goals: Elliot, Rory, Bay
POM: Frank
- 11/01 Cup quarter final vs Godmanchester Town (away)
Won 0-1
Goals: Ollie
POM: Ali
- 18/01 vs Oakington (away)
Won 1-2
Goals: Ollie, Rory
POM: Rory
- 25/01 vs Histon (home)
Won 5-0
Goals: Elliot, Alfie, Aiden, Bay, Ollie
POM: Bay

A cup semi-final at home on the 15 February awaits! Before that, fixtures are scheduled against Histon, Ely and Trumpington.

Saturday Seniors

- 30/11 vs Longstanton (away)
Won 2-4
Goals: Barker 2, Butcher, Walford
- 14/12 Cambs Junior Cup vs Histon Hornets (away)
Won 1-7
Goals: Barker 3, Bell-Green 2, Churms, Sharp
- 04/01 vs Histon Hornets (home)
Won 5-4
Goals: Kennedy 2, Churms, Bell-Green, Warner
- 18/01 Cambs Junior Cup quarter final vs Cambridge Ambassadors (home)
Won 5-0
Goals: Kennedy 2, Walker 2, Walford
- 25/01 vs Comberton Res (home)
Won 3-1
Goals: Smith 2, Churms

A string of five wins sees the Gamlingay First Team reach two semi-finals and sit in a strong league position. With games in hand, the dream of a treble is well and truly on. However, there are some tough league fixtures coming up and the next month could prove crucial to how the final league table will look.

Sunday Vets

- 26/01 vs Hardwick (home)
Won 5-1
Goals: Cooper, Worboys, Hamilton, Amit, Price



Based between Cambridgeshire and Bedfordshire

Internal & External Doors, Windows
Kitchens & Bedroom Fittings
Bespoke Furniture
Pergola and Decking
FlatPack Furniture Assembly

Contact : Fielding Andrews
07910 416903
info@fieldingcarpentryandjoinery.co.uk
www.fieldingcarpentryandjoinery.co.uk

505 CARS

Gamlingay

Airport Transfer Specialists

Call or email to book

01767 650 505

07866 328 020

office@505cars.co.uk

VOLUNTEER DRIVERS
Community Transport Scheme
Call 07519 493 701

Simple Solutions 
(Cambs) Limited

Accounting & Administration for the small business

Part-time Bookkeeper required

Experienced in the use of:
Xero
Quickbooks
Excel spreadsheets
Word

8 hours per week – flexible
Experience essential

Contact Sue on 01767 677 562
or
admin@simplesolutionscambs.co.uk



POTTON MOTOR COMPANY

Quality Used Cars with a Professional Service
Selected used cars bought for cash

With over 30 years experience, I aim to
provide you with a professional service.

I stock a small selection of hand picked
pre-owned cars, prepared to the highest standard.



www.pottonmotorcompany.co.uk
Green End Industrial Estate, Gamlingay

To book an appointment please get in contact:
01767 652869 | 07890 413306

Potatoes with tomato sauce

A recipe from Roderick Starksfield



I love potatoes, and we are approaching new potato season; small potatoes are available throughout the year, but the new ones are better. For this recipe they don't need to be peeled, though if you prefer them peeled, the skins slip off easily once they are cooked. I give here a recipe for tomato sauce – if you are desperate you could substitute a jar of pasta sauce, but home-made tastes much better! The tomato sauce can be made in bulk and frozen for use with pasta, pizzas etc.

Ingredients

For the potatoes

- 900g potatoes, cut into 2cm cubes
- 2 tbsp olive oil

For the tomato sauce

- 3 tbsp olive oil
- 1 small onion, finely chopped
- 2 garlic cloves, chopped
- 400g can chopped tomatoes

- A good pinch of chilli powder
- A pinch of sugar
- Basil leaves, to serve

Method

- Turn the oven to 200°C/180°C fan/gas 6.
- Par-boil the potatoes in salted water for about 15 to 18 minutes, until just soft.
- When they are ready, pat the potatoes dry with kitchen paper, then tip them into a roasting tin and toss in the olive oil and some seasoning. Roast for 20 to 30 minutes until crisp and golden.
- While the potatoes are roasting, make the tomato sauce. Heat the oil in a pan and fry the onion for about 5 minutes, until softened.
- Add the garlic, chopped tomatoes, chilli powder, sugar and a pinch of salt, then bring to the boil, stirring occasionally. Lower to a simmer, and cook for 10 minutes until pulpy.
- Roll up some Basil leaves into a cigar shape, then thinly slice them (this is called a 'chiffonade').
- When both the potatoes and the sauce are ready, tip the potatoes into a serving dishes and spoon over the tomato sauce. Sprinkle with some fresh basil to serve.

 **CHILTERN** 
School of Motoring

Female Driving Instructor

Tel: Liz 07986 543 121

Email: info@chilternsom.co.uk

www.chilternsom.co.uk



Quiz and Puzzle Corner

by Kevin Bentley

Komino rules

Using the whole list of reversible digit pairs, complete the grid so that each box contains one pair. A digit cannot be beside the same digit in an adjacent box. Boxes containing a pair of identical digits cannot be side by side.

Komino		Medium																								
<table border="1" style="width: 100%; border-collapse: collapse;"> <tr><td style="width: 33%;"></td><td style="width: 33%; text-align: center;">3</td><td style="width: 33%; text-align: center;">6</td></tr> <tr><td style="text-align: center;">4</td><td></td><td style="text-align: right;">6</td></tr> <tr><td></td><td style="text-align: center;">2</td><td style="text-align: center;">1</td></tr> <tr><td style="text-align: center;">4</td><td></td><td style="text-align: center;">4</td></tr> </table>		3	6	4		6		2	1	4		4		<table style="width: 100%; border-collapse: collapse;"> <tr><td style="width: 33%;">0 1</td><td style="width: 33%;">0 3</td><td style="width: 33%;">0 5</td></tr> <tr><td>1 4</td><td>1 5</td><td>1 6</td></tr> <tr><td>2 5</td><td>3 4</td><td>3 5</td></tr> <tr><td>4 5</td><td>5 5</td><td>5 6</td></tr> </table>	0 1	0 3	0 5	1 4	1 5	1 6	2 5	3 4	3 5	4 5	5 5	5 6
	3	6																								
4		6																								
	2	1																								
4		4																								
0 1	0 3	0 5																								
1 4	1 5	1 6																								
2 5	3 4	3 5																								
4 5	5 5	5 6																								
Copyright © 2025 Kevin Bentley. All rights reserved.																										

I hope you have enjoyed the challenge of solving this Komino puzzle. There are more in my book of 200 Komino Puzzles, which is currently available with 20% off the retail price from my publishers (Troubador) for £8.00 at: troubador.co.uk/bookshop/sport-hobbies/komino-puzzles using discount code **KMNTC1**

Jan / Feb Solution

6	6	9	0	4	4
2	9	6	8	3	8
5	7	3	3	9	3
9	9	8	5	3	5
0	1	5	9	0	3

Komino Notes

James Brickwork and Building

JAMES CLEMENTS Mobile: 07775 874 642

The Gables
5 Mill Street
Gamlingay
SG19 3JW

Extensions - Block Paving
Patios - Fireplaces - Walling

sfmortgages

Let us find the right Mortgage for you :

- First Time Buyer
- Moving Home
- Remortgages
- Buy To Let

We can also help with the following :

- Life Cover
- Buildings and Contents
- Critical Illness
- Landlord Insurance
- Income Protection

Contact us for a free initial consultation:
Tel: 07473 377015 Email: alan@sfmortgages.co.uk

YOUR HOME MAY BE REPOSSESSED IF YOU DO NOT KEEP UP REPAYMENTS ON YOUR MORTGAGE

Christopher
THE LOCKSMITH

ARE YOUR LOCKS BEHAVING BADLY?

We Value Old Fashioned Customer Service
A Local Trusted Family Business Since 1989

- Specialist in UPVC & Wooden Doors
- No Call Out Charge
- No Fix No Fee
- All Work Fully Guaranteed
- 10% Senior Citizen Discount

For More Advice & Help Call Christopher:
07772 111 222

www.christopherthelocksmith.co.uk

Grovemount Limited

General Builders

All building & refurbishment work undertaken.

PVCu windows, doors & conservatories.

Potton Road The Heath, Gamlingay
Tel: 01767 651 299

What's On

Send your entries to whatson@gamlingaygazette.uk

Beginners Breeze	Thursday 6 March	Ladies' Cycling. First Thursday of the month at the Eco Hub. Contact gill.kitchener@btinternet.com or 07842 135 732
Bellringers	Thursdays	7.30pm to 9.00pm with John Boocock at St. Mary's, Gamlingay
Bin Collection Days	Thursdays: 6 and 20 March 13 and 27 March	Blue and Green bins Black bin
Booklinks Book Club	Monday 3 March	First Monday of the month, 7.30pm in the Library at the Eco Hub.
Cock Inn	Monday 10 March	Monthly quiz nights starting at 8.00pm. £2.00 per head for various charities. New teams welcome.
Community Choir	Wednesday 5 March Saturday 15 March	First Wednesday of the month 8.00pm to 9:30pm Third Saturday of the month 10.00am to 12.00noon Both in the Kingspan Hall at the Eco Hub
Connect Café	Fridays	10.30am to 12:30pm at the Eco Hub. All welcome to a friendly drop-in cafe for a cuppa and cake – £2.00 with free drinks refills. Lifts available. Please contact the Eco Hub Manager.
Eco Hub	Every Monday	Zumba Gold – 10.00am to 10.45am Kingfisher Disability Group – 10.00am to 3.00pm Fitness Pilates – 11.00am to 11.45am Movement for Memory – 1.00pm to 2.30pm Street Dance & Freestyle Disco – 4.00pm to 6.50pm (<i>term time only</i>) Rainbow Guides – 4.00pm to 7.15pm (<i>term time only</i>)
	Every Tuesday	Mat Pilates – 10.00am to 10.55am Chair Pilates – 11.05am to 12.00noon Active Ageing Pilates – 12.05pm to 1.00pm Carpet Bowls – 2.00pm to 4.00pm Yoga – 7.15pm to 8.15pm
	Every Wednesday	Fitness to prevent injury – 9.30am to 10.30am Kingfisher Disability Group – 10.00am to 3.00pm Love Art Community Art Group – 10.30am to 12.30pm Puppy training – 6.00pm to 7.30pm Tai Chi – 9.30am to 10.30am
	Every Thursday	Cha Char Chimps, children's fun session – 10.00am to 11.00am Crafty Ladies Craft Group (<i>Gentlemen welcome too!</i>) – 10.00am to 12.00noon Cha Char Baby Chimps Session (<i>For newborns and non-walking babies</i>) – 11.30am to 12.15pm New Age Kurling – 2.00pm to 3.00pm Alice Lucas School of Dance , ballet and jazz – 5.00pm to 7.45pm (<i>term time only</i>)
	Every Friday	Kingfisher Disability Group – 10.00am to 3.00pm Connect Café Community Coffee Morning – 10.30am to 12.30pm O'Mahoney Academy Irish Dancing – 9.00am to 10.00am
	Every Saturday Every Sunday	Little Ruggers – 8.00am to 12.15pm (<i>term time only</i>)
	Fortnightly/monthly events Tuesday 4 March Tuesday 25 March	For Men to Talk – first Tuesday of the month, 6.00pm to 8.00pm Memory Lane Group – For people living with dementia and memory loss, and their companions – 2.00pm to 4.00pm
	Saturdays 1 and 15 March	Library Lego Club – first and third Saturdays of the month, 10.00am to 12.00noon
	Friday 21 March Friday 28 March	Monthly Meditation – third Friday of the month, 7.00pm to 8.00pm Sound Bath – fourth Friday of the month, 7.30pm to 8.30pm
	One-off events Friday 21 March Saturday 22 March	Connect Café home bake week in aid of MIND – Friday 21 March, 10.30am to 12.30pm Gamlingay Eco Hub open afternoon – Saturday 22 March, 1.00pm to 3.30pm
Gamlingay Allotments		Secretary Robert Carolan, gamlingay.allotment@gmail.com

What's On

Send your entries to whatson@gamlingaygazette.uk

Gamlingay Library	Mondays Wednesdays Thursdays Fridays Saturdays Saturdays 1, 15 March	2.00pm to 4.00pm – Preschoolers' Story Time 2.30pm 2.00pm to 4.00pm – Free computer buddying, ask at the library for info 6.00pm to 7.00pm 10.00am to 12noon 10.30am to 12.30pm 10.00am to 12.00noon 10.00am to 12noon – Library Lego Club
Gamlingay Parish Council	Full Council Meeting: Tuesday 11 March F&GP Meeting: Tuesday 25 March	Meetings held at 7.30pm in the Kier Suite at the Eco Hub and are open to all. Planning Committee Meetings (open to all) at 7.00pm prior to the Full Council and Finance & General Purposes Meetings. Clerks: Leanne Bacon and Kirstin Rayner. Tel: 650 310 or Email: clerk@gamlingay-pc.gov.uk . Agendas available on our website: www.gamlingay-pc.gov.uk and on noticeboards.
Gamlingay Social Club	Thursdays 13, 27 March Thursdays 6, 20 March, 3 April Every Friday	Cribbage Fun Quiz Cash prize bingo at 8.30pm
Gamlingay Walkers	Wednesday 5 March	First Wednesday morning of the month, followed by optional pub lunch, March to December. Contact Miriam on 01767 654 891 or email miriamjones80@hotmail.com
Greensands Writers	Tuesday 18 March	Meetings held on the third Tuesday of every month via Zoom. Details on www.greensandwriters.weebly.com
Guild of St. Mary's	Monday 17 March Monday 21 April	Monthly meetings, usually third Monday of the month.
Hatley Coffee Morning	Tuesday 4 March	10.00am to 1.00pm at Hatley Village Hall. Everyone welcome. Donations on the day split between the Village Hall and Church.
Hatley Parish Council	Third Tuesday of the months January, March, May, July and October	Meetings start at 7.00pm. Contact the Clerk Kim Wilde on 07591 346 835 or email clerk@hatley-pc.gov.uk Details on the website www.hatley.info or noticeboards.
History Society	Tuesday 11 March	Meetings, open to all, are held at the Eco Hub, Stocks Lane at 7.30pm on the second Tuesday of each month, except January, July and August.
Jelly Tots Baby and Toddlers	Mondays	9.30am to 11.00am. A baby and toddler group for 0-5 years. £2.00 per adult and child plus 50p per extra child. St Mary's Church Hall.
Music Club	Thursdays 6, 20 March, 3 April	Meetings held every alternate Thursday. For further information call Geoff Bruerton on 01767 650 748.
Photographic Society		Contacts: Nick or Jackie Bruce 01767 651 025/07925 119 346
Potton Ladies Club	Tuesdays 4 March, 1 April	Meetings on the first Tuesday of the month at the Mill Lane Pavillion, Mill Lane, Potton. Sarah Burgoine: sarahjburgoine@gmail.com or 01767 631 415.
St. Mary's Choir	Thursdays	6.30pm choir practice open to all singers at St. Mary's Church.
St. Mary's Simple Lunches	Tuesdays 4, 18 March	First and third Tuesday of the month. 12.30pm start at St. Mary's Church Hall
The Gazette	Friday 28 March Friday 25 April	May issue deadline for all copy and adverts. June issue deadline for all copy and adverts.
The Wheatsheaf	Mondays Wednesdays Thursdays Fridays	Quiz on the last Monday of the month, starts at 7.30pm Fish & Chip Van from 5.00pm to 9.00pm Pizza Van from 5.00pm to 9.00pm Kebab Van from 5.00pm to 9.00pm
Women's Institute	Tuesday 18 March	In the Kier Suite, Eco Hub at 7.30pm on the third Tuesday of the month. Please come along to our friendly meetings. For further info: Jean 650 367 or 07522 665 901 and Jane 07790 256 703

Village Information

Emergency Services

Police, Ambulance and Fire	999
Non-Emergency Fire	01223 376 217
Non-Emergency Police and Community Police	101
PC Mark Heslop 01480 456 111 (Ask for St Neots Police Station)	

Healthcare and Council

Medical centre	
Appointments	260 340
Out of hours	111
District nurses	08456 024 064
Age Concern	01354 696 650
Homecare	07776 021 611
Anne Hutson	
Community car scheme	07519 493 701
Alison Baker	

Parish Council	650 310
<i>Clerks:</i> Kirstin Rayner, Leanne Bacon at <i>ecohub</i> : clerk@gamlingay-pc.gov.uk <i>web page</i> : www.gamlingay-pc.gov.uk <i>Chairman:</i> Samantha Martin <i>Vice-Chairman:</i> Wendy Boyne	

Faulty Street Lights	0800 7873 247
----------------------	----------------------

Library	651 226
Kate Laugharne	

Forward Gamlingay	
<i>Chair:</i> Sarah Groom	

Hatley Parish Council	07591 346 835
<i>Clerk:</i> Kim Wilde <i>Email:</i> clerk@hatley-pc.gov.uk <i>Chairman:</i> Paul Kraus cllr-kraus@hatley-pc.gov.uk	

Politics

Member of Parliament	
Pippa Heylings, MP pippa.heylings.mp@parliament.uk	

County Councillor	651 982
Sebastian Kindersley	

District Councillor	
Bridget Smith	03450 450 500
Cllr.BridgetSmith@scambs.gov.uk Monday-Saturday 08:00 to 20:00 South Cambridgeshire District Council	

Hatley District Councillor	07885 774 775
Heather Williams cllr.williams@scambs.gov.uk	

Churches

Baptist Church, Office	Church Office Sally Graves	651 519 650 112
St. Mary The Virgin	<i>Rector:</i> Hilary Young <i>Church Warden:</i> to Ann Davis <i>Reader:</i> Chris Miller	650 587 07970 076 972 650 779

Halls for Hire

Eco Hub	Kate Laughame manager@gamlingayecohub.org.uk	651 226
Everton Village Hall		682 251
Gamlingay Social Club	Katrina Smith	651 775
Hatley Village Hall	Kim Wilde, www.hatley.info	07591 346 835
Methodist Chapel	Parish Council	650 310
St. Mary's Church	Ann Davis gamlingaychurchhall@gmail.com	

Hobbies, Leisure and Interests

Bell Ringers	John Boocock gamlingaybellringers@gmail.com www.gamlingay-bell-ringers.webador.co.uk	650 736
Booklinks	Kate Laugharne	651 226
Cafe Connect	Ann Kirby	651 134
Community Choir	Jane Orchiston	0753 500 5908
East Beds Model Railway Society	<i>Secretary:</i> John Wakeman wakemanpj@aol.com	
Friends of St Mary's	Helen Miller	677 390
Gamlingay Allotment Gardeners Association (GAGA)	<i>Secretary:</i> Robert Carolan gamlingayallotments@gmail.com <i>Membership Secretary:</i> John Way johnway803@gmail.com	07771 598 810 650 114
Gamlingay Archaeological Group (Gamarch)	Chris Tomsett <i>Secretary:</i> Julia Manley julialmanley@yahoo.com	650 009
Gamlingay Players	Amy Lovat, lovat1@hotmail.com	07843 527 979
Gamlingay Walkers	Miriam Titchner	654 891
Gardening Club	<i>Chair:</i> Marcia Kaye	07770 796959
Greensand Writers	www.greensandwriters.wixsite.com	
Guild of St. Mary's	Liz Huckle	650 988
History Society	David Allen gamlingayhistory@gmail.com	651 472
Ladybird Club	Mrs C Watson	650 707
Music Club	Geoff Bruerton	650 748
Photographic Society	<i>Chair/Secretary:</i> Jackie Bruce nickbruce7@btinternet.com	651 025
Royal British Legion	Sebastian Kindersley Jackie Hough	651 982 651 070
Sandy and District Round Table	Lee Packham Brown	

Village Information

Sir John Jacob's Almshouses	Clerk: cwsjjapc@outlook.com Chair: Sebastian Kindersley	651 120 651 982
St. Neots Model Railway Club	John Kneeshaw j.kneeshaw@ntlworld.com	
Village Show	Jayne Dawkins gamlingayshow@hotmail.com	07713 247973
Women's Institute	Jean York Jane	650 367 or 07522 665 901 07790 256 703

Preschool Groups and Education

Carers Group	Bridget Smith	650 510
Everton Heath Primary Pre-school	Katie May kmay@evertonheath.org.uk	01767 680 534
Jelly Tots & Marvellous Musicians	Lisa Mistrano	07931 356 931
Montessori	Mrs Pat Jenkins	650 645 07714 821 940

School

Gamlingay Primary		650 208
-------------------	--	---------

Sports

Bowls Club	Brian Culverhouse	651 020
Breeze Ladies Cycling	Gill Kitchener	650 035
Football Club (Youth Teams)	Chair: Brian Culverhouse	651 020
Gamlingay Gym	Jo Treverton info@gamlingayleisure.org.uk	651 785
MUGA Hire		651 785
Gamlingay Netball Club	Gamlingaynetball@gmail.com	
Junior Football School	Brian Culverhouse	651 020
Tennis Club	John Gray	654 165
Waresley Cricket Club	Rod Kerr waresleycc@hotmail.co.uk	07545 453 559

Youth Groups

1st Gamlingay Brownies	Jane Brown	652 997
1st Gamlingay Rainbows	Sarah Galvin gamlingayrainbows@outlook.com	
2nd Gamlingay Guides	Benita Scott	650 547
Beavers (6-8)	beavers@gamlingayandgransdenscouts.org	
Cubs (8-10½)	gamlingaycubs@gamlingayandgransdenscouts.org gransden&evertoncubs@gamlingayandgransdenscouts.org	
Scouts (10½-14)	gamlingayscouts@gamlingayandgransdenscouts.org pathfinderscouts@gamlingayandgransdenscouts.org	
Explorers (14-18)	explorers@gamlingayandgransdenscouts.org	
Tinuwen Rangers	Irene Gray	651 212
Youth Cafe	Lucy Rands	07929 453 235
Youth Club	Lucy Rands	07929 453 235

Cambridge County Council

Care Services

Adult Health and Social Service General Enquiries	0345 045 5201
Adult Social Care	0345 045 5202
Children's Services	0345 045 5203
Blue Badges Disabled Parking	0345 045 5204
Occupational Health	0345 045 5205
Learning Disability Partnership/Sensory Services	0345 045 5221

General Community Services

Citizenship	0345 045 5155
Education Transport	0345 045 5208
Education Welfare Benefits Service	0345 045 1361
Family Information Service	0345 045 1360
General Enquiries	0345 045 5200
Human Resources (Recruitment Line)	0345 045 5210
Library Services (includes automatic renewals)	0345 045 5225
Online Payments Support	0345 045 5211
Streetscene (Highways, Transport and Streets)	0345 045 5212
Switchboard	0345 045 5222
Trading Standards	0845 404 0506
Waste Management	0345 045 5207

Other Emergency Services

Power cuts	
UK Power Network	105
Water supply	
Cambridge Water	01223 706 050
Surface flooding	
Cambs County Council	0345 045 5200
Sewer flooding	
Anglian Water	03457 145 145
Domestic gas emergency	
	0800 111 999



WORBOYS GARAGE & FILLING STATION

Mill Street, Gamlingay

Serving Gamlingay since 1936



MOT TESTING STATION

Servicing and repairs on most makes of vehicles and light commercials

Tyres - Batteries - Exhausts

Tel: 01767 650 273

Book your next holiday with Kirstie

Here's why...

- She is based locally in Gamlingay, so you can meet face to face
- She has a wealth of travel experience
- She offers world wide cover, guided tours, cruises and rail journeys
- She can tailor make your ideal package or multicentre itinerary
- She can sell packaged holidays such as Jet2, Kuoni and Easyjet
- She's with you 24/7 for customer support - even when you're on holiday!
- She offers 100% financial protection
- She is professional, friendly and caring

MULTICENTRE • CRUISES • GUIDED TOURS

Why wait? Call **01767 360014** or **07815 814798**
or email kirstie.timmins@travelcounsellors.com

[kirstietimmins](https://www.facebook.com/kirstietimmins)



IN ASSOCIATION WITH 505 CARS GAMLINGAY
AIRPORT TRANSFERS - 01767 650505
EMAIL OFFICE@505CARS.CO.UK

Can you HELP the Community Transport Scheme?
Volunteer drivers URGENTLY needed – Contact 07519 493 701



Extensions

Loft and Garage Conversions

Kitchens and Bathrooms

Refurbishments

All aspects of Carpentry

Free no obligation quotes

07889 966 957

wilsherbuildingservices@outlook.com



Est. 1994

Need a reliable window cleaner?

Window cleaning • Gutter cleaning
Conservatory roof cleaning

07808 064 644

Free window clean with every gutter clean



MARBLE, GRANITE & QUARTZ WORKTOPS

Templated supplied and installed onto new units or as replacement tops.

Combining modern machinery with traditional skills.

Tel: 01767 314180

Email: sales@qstoneworks.co.uk

All major brands of quartz supplied



STONWORKS: 3 Potton Road · Biggleswade · SG18 0DU
SHOWROOM: 83 High Street · Biggleswade · SG18 0LA

www.qstoneworks.co.uk



Plumbing & Heating

07805 650940

www.gottplumbingandheating.co.uk



High quality services at competitive prices. Contact Ed Gott for all your Plumbing and Heating needs

- ♦ Complete Bathroom Installations
- ♦ Complete Kitchen Installations
- ♦ Air Source Heat Pump Installations
- ♦ Oil Boiler Specialist
- ♦ Unvented Hot Water Cylinders
- ♦ Central Heating
- ♦ Radiators
- ♦ Plumbing
- ♦ Power Flushing
- ♦ Burst Pipes
- ♦ Taps / Outdoor Taps
- ♦ Showers
- ♦ Toilets

Email: info@gottplumbingandheating.co.uk

Experienced Emergency Plumber based locally