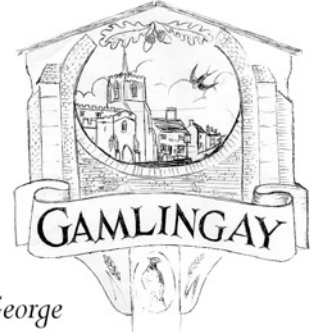


The Gazette



The Community Chronicle for Gamlingsay, East Hatley and Hatley St. George

Established November 1991

November 2024

Circulation 2,050

Natural fireworks!



Northern lights from the ground on 10 October 2024.



Northern lights over the War Memorial on 10 May 2024.

I wonder how many times in its history the northern lights have danced over Gamlingsay? Surely not so very many. But this year, we have been treated to not one, but two extraordinary displays. It's not something I thought I'd *ever* see – let alone from outside my own back door! For those who missed the spectacle, I hope you enjoy these images which, surely, must be a once (or twice) in a lifetime occurrence.

On the other hand, the solar cycle may not peak until early 2025 – so perhaps it's not over yet. If you want to make sure you don't miss out next time around, here are a few tips...

First, download an app that will let you know when you're in with a chance. I have one called "AuroraWatch UK". Adjust the notifications so they only pop up on a "red alert" otherwise it will be too annoying! From my limited experience, it's only really worth going out to look when

the disturbance level gets over about (-)600nT.

Second, don't expect the aurora to be easy to see, or to look just like these photos – you will be disappointed! Instead, use a camera to help you find it (smartphones on night mode work surprisingly well). Point the camera north, and if you can see colour, then go to a dark open space (graveyard, field, playground...) and enjoy. Your camera will help you see the display more vibrantly as it takes in more light – but for the best chance of seeing it with the naked eye, put the electronics away so your eyes can adjust.

Good luck – let's hope there's more to come. And for some easier-to-spot lights in the sky, don't miss the Friends of GVP Fireworks Spectacular on Sunday 3 November (details inside).

Catherine T



Gareth Squance captured this incredible shot using a drone on 10 October 2024.

What's Inside for November

1	Natural fireworks!
3	Editorial Announcement Repair café reminder About the <i>Gazette</i> Gamlingay and the reat War
4-5	Gamlingay Show 2024
6	The Great Gamlingay Rake-Off is not quite rained off!
8	News from the Eco Hub
9	The Vicar of Dibley is coming to Gamlingay Save the date for Christmas Cheer at the Cinques
10-11	Gamlingay Baptist Church
12-13	Parish Church of St. Mary the Virgin
14	Wildlife Trust November update Days to Remember
15	Photo of the month Fireworks Spectacular
16-17	Historyman: The craftspeople of Gamlingay
19	Gamlingay ... a personal perspective
20-22	Councillors' Column
22	New year, new Christmas lights!
23	Update from How Are You South Cambs
25	Gamlingay United Football Club
26	Cheese soufflé
27	Quiz and Puzzle Corner
28-29	What's On
30-31	Village information and contact details

The Gazette

Editorial Committee

Chair

Ted Bradshawe
committee@gamlingaygazette.uk

Editor

Keith Warburton
editor@gamlingaygazette.uk

Guest Editor

Catherine Travers
editor@gamlingaygazette.uk

Layout Editor

Larry New
editor@gamlingaygazette.uk

Distribution Manager

Jan Bremner
jan_bremner@btinternet.com

Distribution

A large team of loyal and intrepid volunteers that makes it all possible

Advertising Manager

Jan Bremner
advert@gamlingaygazette.uk

Village web pages

Roderick Starksfield
gamlingay.org
Ted Bradshawe
Gamlingaygazette.uk

What's On

whatson@gamlingaygazette.uk

Next edition deadlines:

**January/February
Issue:**

Friday, 29 November

March Issue:

Friday, 31 January

Your *Gazette* in colour, every month!

The *Gazette* team would love to be able to bring you a printed colour issue every month, especially when we have lots of colour images to share. Unfortunately, we can't afford to do that. But a colour version of the *Gazette* is available for you to download from www.gamlingaygazette.uk

Editorial

Positive vibes for the autumn

Gathering together the content for this month's issue, I was struck by the recurring theme of the importance of gratitude and positivity. This does not always happen: often the articles we are sent are completely random and unrelated – and this is no bad thing! But this month's issue definitely has a bit of a "theme".

The Baptist Church and St Mary's articles make related points about the importance of gratitude and the ability to influence how you feel and think by making positive choices. Both articles are thought-provoking and well worth a read, whatever your religious beliefs, or lack thereof. And then we have an

interview in the "Personal Perspectives" column with someone who is living her life as positively as she can, despite having faced circumstances most of us can, thankfully, barely imagine.

November can be glorious, exciting, atmospheric – and it can also be dark, dreary, lonely and full of epic to-do lists. I personally will be attempting to carry through some of the advice and inspiration from this month's articles and stories to make sure I retain my sense of perspective and take the time to appreciate the many positive things this month. Even when it is raining.

Catherine

Announcement

Brian Darlow of Blythe Way passed away very peacefully on 23 September, aged 89, following a long illness.

Living in this area all his life, he was a much-loved Dad, Grandad, Great Grandad, Uncle and Friend. At his request there was a private cremation.

He will be sadly missed.

Repair café reminder

Saturday 2 November from 1.00pm to 4.00pm at the Eco Hub.

All sorts of fixes available: electrical, electronic, mechanical, sewing and jewellery repairs... If you haven't booked already, there may still be slots available. Email gamlingayrepaircafe@gmail.com for more information.

A free event, but donations are welcome.

About the Gazette

About us:

The *Gamlingay Gazette* is an independent publication that aims to inform people living in and around Gamlingay of local news and events. It is funded solely by advertising. Every care is taken to ensure the accuracy of content but the *Gazette* cannot be held liable for any errors. Views expressed do not necessarily represent the views of the *Gazette* Committee.

To advertise:

Please email Jan Bremner: adverts@gamlingaygazette.uk.

Announcements:

The *Gazette* will share announcements of arrivals and departures.

Please send your notices, of no more than 50 words, to: editor@gamlingaygazette.uk.

Submit an article:

We welcome contributions of articles and pictures – without them there would be no *Gazette*!

To submit an article, simply email your contribution on editor@gamlingaygazette.uk.

Article text can be submitted within an email or as an attachment. Images should be submitted separately: please do not lay out or design your submission for us.

Please state who took or owns each image, and ensure that you have permission from anyone shown in clearly recognisable form.

Do let us know if you would like to be added to our monthly article submission reminder emails.

Please note that the *Gazette* reserves the right to edit all content for style, length and accuracy.

Gamlingay and the Great War

Gamlingay History Society provides a preview of the forthcoming November talk

Over two hundred men and boys left Gamlingay to join the armed forces in the Great War of 1914-18, and their absence profoundly changed village life. The initial excitement of going to war quickly abated and over a third of those who left to fight never returned.

'Gamlingay during World War One' is the title of our next talk, to be given by our Chairman, Peter Wright, in the Main Hall of the Eco Hub on Tuesday 12 November at 7.30pm.

Please do join us there. There will be a display of WWI artefacts, as well as photographs and information relating to Gamlingay from that time.

To find out more about Gamlingay History Society's forthcoming talks, do visit our website:

www.gamlingayhistory.co.uk or pick up a paper programme from the Eco Hub.

Our sister website of historic photos of our village, www.gamlingayphotos.co.uk, is also well worth a visit.



Hair & Moore

A FAMILY RUN UNISEX
HAIR AND BEAUTY SALON,
WITH OVER 40 YEARS
EXPERIENCE!

01767 769303
Hairbyleah98@gmail.com
34 church street, Gamlingay, SG193JH

Gamlingay Show 2024

The show committee provide a round-up of this year's show

The annual Gamlingay Show took place on Saturday 21 September at Gamlingay Village Primary school. The weather was kind, apart from one rather dramatic downpour just as Jezo was getting going with his magic show! This year's show had the usual mix of competitions, classic cars, craft stalls, food and drink outlets, arena events, music acts, raffle and – new for this year – a live arena auction. Here's a round-up of some of the action.

Competitions

The competition marquee was packed this year, with 245 entries ranging from lengthy runner beans, tasty jam and home brew to stunning flower displays, miniature furniture, pottery and an array of wonderful art. The heaviest marrow weighed in at 11³/₄lb (5.33kg) and the heaviest pumpkin at 26¹/₂ lb (12kg).

The children's categories showcased an assortment of models, collages, drawings and photos, with everything from coconut pirates to lego dinosaurs to be found. The categories for primary-school-aged children were particularly competitive!

The list of winners is too extensive to publish here – but well done to everyone who received a certificate, and to everyone who entered: this year's display was a testament to the creativity and hard work of our villagers.

We were pleased that so many people made use of our new pre-registration facility, which streamlined the process of bringing entries on the day.

Arena

The arena events kept everyone entertained, with displays from Asahi Shotokan Karate club and Miss Alice Lucas School of Dance as well as Cyndi's Dog Show and Jezo's amazing Magic Show. New for this year was a live auction of a flight with international stunt pilot Mark Jefferies, as well as a fighter jet simulator experience. The show wound up with classic children's races followed by the now-legendary tug of war, all ably overseen by Jezo.

Music stand

This year's music acts were organised by Mike Roberts from Gamlingay Baptist Church. Jasper Stone topped and tailed the programme with '80s hits; Will Makower performed a mix of original songs and covers; and the GBC band gave a flavour of contemporary Christian music.

Vintage cars

The wonderful vintage vehicles turned up again this year, with over 60 beautiful cars and motorcycles along with the Gamlingay fire engine. The winners this year were:

- The People's Choice Best in Show: 1968 bright red Pontiac GTO
- The Modern Classic: A smart, sleek 1991 black VW Scirocco GT2
- The Concours d'Elegance: a beautiful original 1930s yellow & black Austin 7 Chummy Tourer
- The #Mechanic's Choice: a practical 1965 green Austin Mini Van.



Photo credit for all show pictures: Stan Saunders ARPS

Stall holders

This year there was an array of stall holders, displaying and selling a range of locally produced products. We were also pleased to have stalls from some of our village organisations, such as the library and the Parish Council, who offered a chance to vote on what you'd change about the village. The Scouts ran an excellent BBQ, as ever, and there were many other refreshment options too.

... and a lot of thank yous!

Thanks to the **main show sponsors**: Brogan Group, Hadley James, KMG Systems Ltd and Pinewood Structures.



Thanks to all the **local companies** who supplied lots of **raffle prizes**: Worboys Garage, Anna's Florist, O'Sarracino, #Hashtag Mechanic, Imperial War Museum Duxford, Cloud Nine Beauty, Waresley Park Garden Centre, Woodview Farm Shop and Gamlingay Gym.

Thanks to everyone who **helped on the day** including Tinuwen Rangers, Steve, Hayley, Cat, Philippa, James and Paul.

And a special thanks to **Gamlingay Village Primary School** for allowing the organisers to use the school grounds to put on the show.

[Note from the editor: the committee have omitted themselves from this list of people to thank! So, on behalf of all those who attended, a huge thank you to the hard-working show committee, without whom our village would of course have no show at all.]



What's next?

Make sure you save the date for next year's show, which will be on **20 September 2025**.

Meanwhile, the show committee will be meeting imminently to discuss **plans for distributing the proceeds** from this year's show. Money made from the show all goes back into the village community, and we'll be writing

more about this in the next issue of the *Gazette*.

The show is organised and run by a small committee of eight villagers: Jayne Dawkins, Steve Palmer, Victoria Critchlow, Peter Condon, Ken Burgin, Diane Reynolds, Gem Kelly and Sarah Callis. If you're interested in **joining the committee or helping out** at next year's event, do drop them a line on gamlingayshow@hotmail.com.

The Great Gamlingay Rake-Off is not quite rained off!

By John Evans

The Great Gamlingay Rake-Off involves collecting as much cut grass as possible to encourage the growth of wildflowers on Millbridge Brook Meadows, and it is now in its third year.


This year, heavy rain forced a delay of a week – but on 3 October the sun returned, and so did the rake-off volunteers! Here you can see them out in force on Lower Field.

Raking the hay helps wildflowers thrive in less fertile sandy soil like that in Gamlingay. Organiser Gwyn Williams explains: “If the grass cuttings were allowed to rot down, nutrients would be recycled that would fertilise the soil and help the more vigorous



grass species to out-compete most of the wildflower species that we are seeking to encourage. Depleting the nutrient supply encourages the wildflowers we want to see more of, such

as cowslips, hay rattle, lady’s bedstraw and meadowsweet. Raking off cut hay at the end of summer is one way of removing a lot of nutrients quickly. It certainly seems to be working.”




What do you want from your lawn?

Whether you're dreaming of a vibrant green lawn that you'll love, or aspiring to be the talk of the neighbourhood, we have the perfect lawn care package for you.

OUR LAWN CARE PACKAGES

- Essential:** Basic care.
- Enhanced:** Key care and extra services.
- Premium:** Everything your lawn will need to look its absolute best.
- Elite:** Every service we have to offer - the ultimate care for your lawn and outdoor space.



A lawn that you love

Essential: Basic care.

Wow your family and friends

Enhanced: Key care and extra services.



Next door is jealous...

Premium: Everything your lawn will need to look its absolute best.

Envy of the neighbourhood!

Elite: Every service we have to offer - the ultimate care for your lawn and outdoor space.

01767 651639
hunts@greensleeves-uk.com
greensleeves-uk.com

 **Trustpilot**
Reviews 8,500+ • Excellent


UK's No1 most trusted lawn care provider





FIELDING CARPENTRY & JOINERY

Based between Cambridgeshire and Bedfordshire

Internal & External Doors, Windows
 Kitchens & Bedroom Fittings
 Bespoke Furniture
 Pergola and Decking
 FlatPack Furniture Assembly

Contact : Fielding Andrews
 07910 416903
 info@fieldingcarpentryandjoinery.co.uk
www.fieldingcarpentryandjoinery.co.uk

All Green Landscapes

Mark is an award winning, fully qualified horticulturist with over 25 years' experience in landscaping.

We can provide:

- Patios & Decking
- Fencing
- Planting & Pruning
- Paving & Driveways
- Turf laying or seeding
- Full Liability Insurance
- Fully Guaranteed



For advice or a FREE quotation call Mark
01767 651126 or **07850397317**
 17 Plane Tree Close, Gamlingay
www.allgreenlandscapes.co.uk

Careers with KMG Systems Ltd

KMG Systems Limited is the global leader in the design and manufacture of equipment for the biggest names in the snacks industry. This year we are celebrating 50 years of manufacturing at our premises on Station Road, Gamlingay where we now have over 180 employees. The business grows every year and we are currently recruiting for many skilled and unskilled roles including:

- > Fabricator Welder
- > Laser Operator/Nester
- > Wire man
- > Engineering Apprentice
- > R&D Engineer
- > Engineering Graduate
- > Design Engineer
- > Compliance Engineer

We have other vacancies. Visit www.kmgsystems.com to see our most current vacancies and more information about how to apply.





News from the Eco Hub

www.gamlingayecohub.org.uk | phone: 01767 651 226

email: manager@gamlingayecohub.org.uk

Facebook/X: Gamlingay Eco Hub

All the latest What's On on our Facebook page, X feed and website.

Email is the best way to get hold of us or you can leave a message on our answerphone.

Our general manager is Kate Laugharne, supported by Tony Hurst and John Berry.

Christmas Craft Fair

Why not kick-start the festive season with a visit to our annual Christmas Craft Fair?

Running over two afternoons on **Saturday 16 and Sunday 17 November from 12.00 to 4.00pm**, talented local crafters will be selling handmade Christmas gifts, stocking fillers and much more – you're sure to find that unique and special gift.

There will be over 35 stalls each day, with some in situ for the whole

weekend, and others visiting for one day only – so do try to visit on both days so that you don't miss anything.

Entry will be just £1 for adults; accompanying children are free, and one ticket will be valid on both days.

For the little ones, Santa and Mrs Claus will be in their grotto and looking forward to seeing you all, and delicious coffee and refreshments will be provided by the Backroom Café.

Macmillan Coffee Morning

Thank you to everyone who attended the Macmillan Coffee Morning on 27 September, which was run, as usual, by the volunteers of the Connect Café.

Together we raised an amazing £525.95 for this very worthy cause.



The Macmillan Coffee Morning

Check out the "What's on" section at the end of the magazine for a full list of events at the Eco Hub, including other one-off events in November such as jewellery and gold valuation (7 November), meditation (15 November) and sound bath (22 November).

Repair Café

The Repair Café, organised by Climate Action Gamlingay, will be running on **Saturday 2 November from 1.00pm to 4.00pm**. If you haven't already booked items in to be repaired, there may still be slots available – visit the Eco Hub website.

There will be a café and members of Climate Action Gamlingay will be at the event – so, even if you have nothing to be repaired, it's worth coming along to enjoy a coffee, find out more about green projects in the area and discover what you can do to reduce your carbon footprint.

Mindful Moments

Are you fed up with not being able to switch off after work? Do you have trouble sleeping because you are worrying about the future? If so, then we have a new class which could help you.

Mindful Moments is a beginners' class about the fundamentals of mindfulness and relaxation. Come along to learn how to focus on the present moment for a truly relaxing experience. The class is held on **Thursdays from 7.30pm to 8.30pm**; contact Tammy at mindfully-you@hotmail.com to find out more.

The Vicar of Dibley is coming to Gamlingay

And if you were expecting "A bloke – beard, bible, bad breath" – Think again...



On Friday 31 January and Saturday 1 February 2025, the Gamlingay Players will be performing the hilarious stage adaptation of the hugely successful TV series, The Vicar of Dibley.

Come and see some of the best-loved and iconic scenes from the TV classic, from how Dibley reacts to their first ever female vicar, through to Alice and Hugo's wedding of the year.

More details to follow in next month's Gazette.

A stage adaptation by Ian Gower and Paul Carpenter.

Based on the original TV series which was produced by Tiger Aspect Productions and written by Richard Curtis and Paul Mayhew-Archer

Save the date for
CHRISTMAS CHEER
at The Cinqes!
CHRISTMAS EVE

Mulled wine, cider and hot chocolate | Sweet and savoury treats
Music

This year we are raising funds for young people's mental health
The William Templeton Foundation



Female Driving Instructor

Tel: Liz 07986 543 121

Email: info@chilternsom.co.uk

www.chilternsom.co.uk



Professional DOG GROOMING

Brush Out | Wash & Go | Nails | De-matting | Full Groom | Puppy Pack

Diane Constantinides

10 Stocks Lane, Gamlingay | Tel: 07468 905 308

Email: TinyPawsFYI@gmail.com

Web: <https://tinypaws.fyi>

VOLUNTEER DRIVERS
Community Transport Scheme
Call 07519 493 701



ONLINE ARTHRITIS ACTION GROUPS

JOIN US ON ZOOM TO MEET OTHERS, SHARE HINTS AND TIPS, AND LEARN ABOUT SELF-MANAGEMENT TECHNIQUES

REGISTER BY EMAILING
EVENTS@ARTHRITISACTION.ORG.UK



SINCLAIR ELECTRICAL

Domestic electrician

- Lights and sockets
- Security lighting
- New fuseboxes
- Full rewires
- Extension wiring
- Showers and cookers
- All household electrics

35 years experience
Part P registered

Call John on
01480 273 927
07815 903 467



Lewis Wooding

**Internal & External
Decorating Services**

Personal references available

Competitive estimates
Detailed quotations

Phone 01767 651647

Mobile 07889 966557



Clarke Midgley

Professional, reliable & trustworthy
PAINTER & DECORATOR

Established 2002



Call 07904 585 963
or email
psychosibes@gmail.com



News from the Churches

Gamlingay Baptist Church

Stocks Lane, Gamlingay, Sandy SG19 3JR

Lead Pastor: Reverend Adrian Semerene adrian@gbchurch.org.uk 07472 350 860

Church Secretary: Mike Roberts on 651 179 Church Office: 651 519

Message for November

*“We ought to give thanks for all fortune:
if it is good, because it is good; if bad, because it works in us patience,
humility and the contempt of this world and the hope of our eternal country.”*

C.S. Lewis

Sometimes, it’s hard to be grateful. Have you ever found that? I remember being irritated as a young person when my parents, or any other adult for that matter, would say something along the lines of, “You should be grateful for x, y, or z. There are many around the world who don’t have that!” – even though I knew it to be true. We studied the world economies, and how many cultures were so different – and so there was a knowledge and understanding of what it meant to be grateful... But we soon forget... Well, perhaps that isn’t fair. I soon forget; maybe you can relate?

As I write this, I have just returned from a relatively brief trip to Uganda serving alongside a Christian Charity called Willow Resource Foundation (www.willowresource.com). They are based in Masaka, Uganda – an amazing area in the Pearl of Africa.

The first thing that struck me was the beautiful and extensive welcome we received alongside the hospitality, that ensured we felt like honoured guests. From greetings, food preparation, and quite

simply, huge smiles as we met people – there was just instant joy that rushed through us.

It was my first time in any African country, and it definitely won’t be my last. A friend described it beautifully in saying “the dust of Africa permeates the soul and brings joy, wonder and smiles that last all day”. I couldn’t have said it better. But why was this? I mean there were plenty of things that a westerner like myself could have complained about: the heat (*man* was it hot, and there was no AC or fans); the potholes (Church Street has nothing on these dusty red roads, which were more pothole than flat surface); the cold showers (though, at times, with the heat, this was also a blessing); the driving (again, if you think people are bad drivers in this village, well, at least there is some semblance of rule and order!)... So, there were plenty of things I, and others, could have complained about... (and indeed plenty of things I *do* complain about back in my ‘comfortable day-to-day.’).

Yet what I noticed was that there were

no complaints. It was actually quite the opposite... What I saw in the locals was such *gratitude* for everything they had: for food, for sunshine, for transport, for visits and friendship... there was just such a level of gratitude and it came with such joy – the joy that my friend and I both felt.

We read in the bible, in 1 Thessalonians 5;16-18:

Rejoice always, pray continually, give thanks in all circumstances; for this is God’s will for you in Christ Jesus.

Sometimes it takes a change in perspective, a simple time of reflection perhaps, to allow us to recognize the things we can be thankful for. I wonder – could you take five minutes, and spend some time thinking about what you could be grateful for? Don’t misunderstand me: I know that life can be really difficult at times, and sometimes, that difficulty and those challenges we face make it hard to see the things we can be thankful for. But just because we can’t see them, doesn’t mean they aren’t there. Take some time, and you might be surprised.

I am genuinely thankful for the community in which we live, and I am thankful for the opportunity to meet and see so many. I am thankful for so many things, even when I go through my moments of feeling ungrateful, I am reminded that there *really* is so much that I can give thanks for!

Fancy catching up and chatting about the amazing things we can be thankful for? Why not get in touch, or come meet up at The Backroom Café, or perhaps at one of the many events happening at GBC over the coming months, from Remembrance, to all the different Christmas gatherings. It would be great to see you.

Many blessings,

Rev Adrian Semerene





THE GAMLINGAY

FOOD PROJECT

We will be launching our Christmas donation appeal very soon to enable us to distribute food hampers to our regular families.

We would therefore be grateful for donations of any Christmas-related items: puddings, mince pies, gravy, cranberry sauce, custard, sweets, wrapping paper, crackers, etc.

If in doubt, please speak to one of our wonderful volunteers.

Thank you for your continued support.

GBC Diary November

Sunday services

Hymnal praise at 9.30am

Worship service at 10.45am

Communion is held on the first Sunday of the month.

Services are live-streamed on www.gbchurch.org.uk/latest-talks

Remembrance Sunday on 10 November at 10.45am.

Following the Act of Remembrance at the War Memorial, the village service (jointly with St Mary's) will take place at the Baptist Church.

Baptism Sunday on 1 December at 10.45am.

Please join us for the celebration.

GBC kids and youth groups

Meet every Sunday (except for the third Sunday) at 10.45am for age-appropriate activities.

Third Sundays

17 November:

The Backroom Café is going 'on tour'! On Saturday 16 and Sunday 17 November, we will be supporting the Eco Hub Craft Fair serving tea, coffee and home-baked cakes. Check weekly news and online for more details.

Unplugged Worship Hour

Sunday 10 and Sunday 24 November 6.00pm to 7.00pm.

A time to praise and worship with simple and stripped back music.

The Backroom Café

Opens every Monday from 9.30am to 3.00pm.

Meet friends, have a chat with good coffee and cake.

Small groups

Meet every week in person and online.

For more details get in touch at office@gbchurch.org.uk

Men's breakfast and FirePit Fridays

Contact mens@gbchurch.org.uk for more information.

Ladies' prayer and study

Saturdays 9 and 23 November, 10.00am to 12.00noon.

A time for conversation, study and prayer.

Please consider following us on social media to keep updated with all our events:

Facebook.com/

GamlingayBaptistChurch

Instagram: @gb_church

X (Twitter): @gb_church

YOU CAN PARTNER WITH US TO PROVIDE REGULAR FOOD PARCELS TO THOSE IN NEED LOCALLY.

LOCATED AT THE ALMHOUSE CHAPEL, 62 CHURCH STREET

CONTACT
ADMIN@GAMLINGAYFOODPROJECT.ORG
07307 349525

BROUGHT TO YOU BY THE GAMLINGAY FOOD PROJECT
IN PARTNERSHIP WITH ST MARY THE VIRGIN CHURCH AND GAMLINGAY BAPTIST CHURCH, CAMBRIDGE SUSTAINABLE FOOD, and FULL THE GAP

OPEN MONDAY - FRIDAY 10 AM - 12 PM

- HELP REDUCE FOOD WASTE!
- SHARE FOOD YOU'VE GROWN!
- ALL FOR FREE!

LOCATED AT THE ALMHOUSE CHAPEL, 62 CHURCH STREET

CONTACT
ADMIN@GAMLINGAYFOODPROJECT.ORG
07307 349525

BROUGHT TO YOU BY THE GAMLINGAY FOOD PROJECT
IN PARTNERSHIP WITH ST MARY THE VIRGIN CHURCH AND GAMLINGAY BAPTIST CHURCH, CAMBRIDGE SUSTAINABLE FOOD, and FULL THE GAP

The Backroom Cafe

Every Monday 9:30am - 3:00pm

Every Third Sunday 10:00am - 4:00pm

Gamlingay Baptist Church

Tea, Coffee, Cakes, & Wi-Fi All free!

For more information contact office@gbchurch.org.uk

Got Questions?

Join us for Alpha! Tuesdays starting in January.

For more information email alpha@gbchurch.org.uk

VOLUNTEER DRIVERS

Community Transport Scheme

For more information telephone **07519 493 701**

Wills & Probate

01767 834044

Richard Woodward
OVER 30 YEARS EXPERIENCE

Will Writing | Fixed Fee Probate
Care Fee Protection For Your Home
Lasting Powers of Attorney
PLEASE REQUEST OUR BROCHURE
FREE HOME VISITS

www.thewillwriter.biz

G & H Seamer

Funeral Directors - Est.1903

Family owned and independent Funeral Directors providing sensitive, dignified care for your loved ones. We provide a 24 hour service, home visits at the request of the family and private Chapel of Rest.

Pre-paid Funeral Plan available

Tel: 01767 680519

www.ghseamer.co.uk
office@ghseamer.co.uk

47 High Street, Sandy, Beds SG19



News from the Churches

Parish Church of St. Mary the Virgin

Rector: Hilary Young

Rectory, 3a Stocks Lane

650 587

Churchwarden: Ann Davis

33 School Close, Gamlingay

07970 076 972

Parish Administrator:

gamlingaychurch@outlook.com

St. Mary's Letter for November

Dear Friends,

As I write, we haven't celebrated our Harvests in churches and schools yet – but thoughts must now turn to remembering, as November brings that season. In the Christian calendar the Saints and the faithful departed (All Souls) are remembered at the beginning of this month, and in the secular calendar November 5th reminds us of 'gunpowder treason and plot' – and then of course we have Remembrance Sunday reminding us of the events and losses of two World Wars.

As November turns to December, we shall be beginning the new church year again with the season of Advent, waiting and preparing for Christmas. More on that next month but, for now, here is a quick 'heads-up' that we are planning 'Advent Angels' around the village in Gamlingay, and perhaps beyond if there is interest. There will be a theme for each week of Advent, with an angel story to illustrate, and hopefully display in the village.

Back on the subject of Remembering, though – this season has led me to wonder: how much does it help you to 'remember who you are'? I have watched with interest some of the BBC series *Who do you think you*

are?, in which celebrities are helped to discover something of their ancestry. Thinking about where we have come from can help us with who we are – but actually, we are each unique and, although a product of what has gone before, there is no one exactly like anyone else – even identical twins. We don't *have* to be defined by our history, or even by our present. We have far more choices than we often believe or exercise.

I recently discovered a new word: 'neuroplasticity' (even the spell-checker on my computer doesn't know it). It basically describes the way our brains can work to make things easier for us – whatever we repeatedly do and think becomes progressively easier to do and think, as new pathways are set up by the cells of our brains. One definition I read says that it basically offers hope to everyone, from those who have had a stroke to those with dyslexia. I hadn't thought about knowing something about how our brain works offering hope, but I did think it was worth reflecting on the implications. It means we actually *can* change how we feel and think by actively engaging with those thoughts and feelings; cognitive behavioural therapy is based on that

fact of course. In this context it means we can choose what and how we remember – and that can change our lives.

The example I was struck by was of a man whose son had died as a young man of 21. At first the father, who had enjoyed a wonderful relationship of friendship and respect with his son, could not live himself after his son's death. Every morning he woke with the thought 'my son is dead' and was unable to function. But somehow the realisation came to him that repeating the loss to himself was destructive, and more than that, that he had a choice in what he told himself. Not that his son could be brought back to life, nor that it didn't matter that he was dead, but the father started to tell himself every morning 'my son lived' and he found that his capacity to live himself changed. Instead of being lost because of what he had lost, he found new life himself and lived again because of what he had had, and the memories he still had.

Remembering who we are (not just, or particularly, who our parents and other ancestors are or were, but who we are – precious and loved children of a divine parent, above all else) can throw a different light on even the worst circumstances. That is, provided we don't start blaming the divine parent for not giving us (or others) a better time! Remembering is at the centre of the Eucharist/Holy Communion all Christians share – bringing to mind what God gives to human beings. Truly, counting blessings can, and needs to, counter the bad feelings of hard times. We owe it to ourselves to tap into the Divine, whose nature is love, in order to be more loving. And it is through real worship (of which prayer is part) that this tapping in takes place. Real worship and prayer are good for us; let's remember to take part.

Every blessing, Hilary

St Mary's Church Gamlingay & Gamlingay Baptist Church proudly present

TRADITIONAL Carols by Candlelight

AN EVENING OF TRADITIONAL CAROLS & READINGS, WITH LIVE ORGAN & OTHER CLASSIC INSTRUMENTATION!

SUNDAY 15 DEC 6:00 PM

ST MARY'S CHURCH - GAMLINGAY
FOLLOWED BY SIMPLE CHRISTMAS RERESHMENTS

FOR MORE INFO - OFFICE@GBCURCH.ORG.UK

QUIZ

in aid of

St. Mary's Church funds

Friday 8 November, 7.30pm at

St. Mary's Church Hall Gamlingay

Quizmaster: Ian Parker

Nibbles provided; bring your own drink.

£5.00 per person

Teams of four or less to max of six.

Solo applicants are invited and we'll put you in a team!

Teams must be booked via a church member or by contacting:

stmarysgamevents@outlook.com

CASH ONLY PLEASE

Services for November

Thursday 31 October:
All Hallows Eve

6.00pm: Service of Light at St. Mary's, Gamlingay – meet at the Rectory beforehand or at church; bring a candle (*baptism or confirmation particularly appropriate*)

Sunday 3 November:
Trinity 23, 4 Before Advent, Celebrating All Saints

9.30am: Parish Eucharist at St. Mary's, Gamlingay for All Saints

11.15am: Parish Eucharist at St. Mary's, Everton

6.00pm: Commemoration Service at St. Mary's, Gamlingay

Sunday 10 November:
Remembrance Sunday

9.30am: Said Eucharist at St. Mary's, Gamlingay

10.45am: Gathering at the War Memorial for 11.00am Act of Remembrance followed by walk to Gamlingay Baptist Church for Remembrance Sunday service

10.45am: Act of Remembrance, St. Mary's Churchyard, Everton followed by service of Remembrance in church

11.00 am: TBC: Act of Remembrance at Hatley St. George's Church war memorial

Sunday 17 November: Trinity 21

9.30am: Parish Eucharist at St. Mary's, Gamlingay with a focus on healing

4.00pm: Evensong at St. Mary's, Everton

Sunday 24 November:
Last after Trinity, Dedication Festivals (Bible Sunday)

9.30am: Parish Eucharist at St. Mary's, Gamlingay

11.15am: Parish Eucharist at St. Mary's, Everton

Advance Notice

Sunday 1 December:
Advent Begins

9.30am: Parish Eucharist at St. Mary's, Gamlingay

4.00pm: Benefice Advent Carol Service at St. Mary's, Everton

St Mary's Christmas Fair

Saturday 7th December

12 noon to 4.30 pm

St Mary's, Gamlingay

- Craft stalls
- Santa's Grotto
- Refreshments
- Dance performance by Alice Lucas School of Dance
- And much more!

Design by www.buzzassociates.co.uk

Hatley Village Hall

1 Main Street, Hatley St. George, Cambridgeshire SG19 3HW

A pleasant, functional and roomy community facility
Available for hire every day from 8.30am to midnight

One user per session | Seats 80

Wi-fi available | Good acoustics

Excellent kitchen with an optional bar area

Perfect for gatherings, parties and meetings

New toilets with disabled and baby-changing facilities

Secure garden at the rear | Large car park

Hourly Rates

Private individuals and groups (residents) £9.00

Private individuals and groups (non-residents) £12.00

Commercial Lettings

£30.00 / first hour; thereafter £15.00 / hour

Minimum Charges

Friday or Saturday evening £55.00

Please visit www.hatley.info for hall availability, booking form, photos and terms and conditions of hire

Or contact Kim Wilde on 07951 346 835
clerk@hatley-pc.gov.uk

THE GAMLINGAY

FOOD PROJECT

HOME OF

COMMUNITY FRIDGE

NEEDHUB

CONTACT

ADMIN@GAMLINGAYFOODPROJECT.ORG
07307 349525

BROUGHT TO YOU BY
ST MARY THE VIRGIN CHURCH
AND GAMLINGAY BAPTIST CHURCH

IN PARTNERSHIP WITH
CAMBRIDGE SUSTAINABLE FOOD

St Mary's Church Hall Gamlingay

located behind Church Cottage
next to St Mary's Church, Church Street
Gamlingay SG19 3JH



Available for hire every day
8.30am to 11.30pm

Ideal for meetings and parties,
£12.00 per hour

To book, please email
gamlingaychurchhall@gmail.com
or contact Ann Davis on
07970 076 972

MEMORY LANE

• A support and social group for people with memory issues and their companions. All welcome.

• Every fourth Tuesday of the month.

• 2 – 4pm at Gamlingay Eco Hub

To let us know you are coming please contact

- David Hilary Young tel 07800 468479
- Gerry Brunt tel 07752428191

Or email manager@gamlingayecohub.org.uk

Memory Lane is a joint project between St Mary the Virgin Church, Gamlingay and Gamlingay Eco Hub.

Cultivate Cambs



Becca Badger provides an update on what to look out for this autumn

Appreciate your local hedgerows

Our hedgerows offer diverse “edge” habitat for wildlife, providing shelter, corridors and food. If you are responsible for looking after a hedgerow that needs cutting back, please consider leaving it until the berries have been eaten. Winter migrants like redwings and fieldfares are often seen in large flocks feasting on the bounty!

Here are some of the berries you might find in your local hedgerows at this time of year:

- **Hawthorn:** small, dark red, slightly ovoid berries, with a dark circle at the end. There are two types of hawthorn in our area: the common hawthorn, and the less common midland hawthorn, which is found in some of our ancient woodlands. Midland hawthorn berries look similar to common hawthorn, but they have two seeds per fruit.
- **Rose:** large, deep red, ovoid berries on thorny stems.
- **Black bryony:** large, shiny, bright red, spherical berries on a climbing plant.
- **Sloes:** single purple/blue berries, often with a matt coating.
- **Ivy:** spherical clusters of green berries ripening to black over winter. These berries are important for wildlife as they are a food source later in the winter.

Why not go on an autumn walk to see how many of these berries you can spot? If you are in one of our nature reserves, please admire the autumn fruits without foraging.

Visit our Christmas fair

Coming along to our events is a great way to support your local Wildlife Trust, and to meet staff and volunteers to chat about our work.

Our annual **Christmas fair** is on **Friday 29 November** from **3.00pm to 7.00pm** at our head office in Cambourne. You can buy nature-related Christmas gifts, take part in a festive raffle, entertain your children with some sustainable crafts, and enjoy a mince pie!

Another way to support our work is to volunteer. Please get in touch to ask about opportunities to do practical work, support our community work, or be involved with indoor tasks.

Stay in touch

- Email: cambridgeshire@wildlifebcn.org
- Website: www.wildlifebcn.org
- Social: [@wildlifebcn](https://www.instagram.com/wildlifebcn)
- Reserve closures: www.wildlifebcn.org/explore/reserve-updates

**Wildlife Trust for
Beds, Cambs
& Northants**

Christmas Fair at Cambourne

**Friday 29th November
From 3pm-7pm**

Enjoy a glass of festive mulled wine, a mince pie and browse our fabulous array of Christmas gifts including:

- Amazing wildlife art, drawings, paintings and prints.
- Handmade jewellery
- Christmas cards, calendars & books
- Hand crafted ceramics
- Fantastic bird boxes and insect houses
- Hand carved wooden gifts

PLUS Fun children's activities, a Christmas raffle ...and a whole lot more!

Free entry

Location: The Manor House, Broad Street, Cambourne CB23 6DH

Car parking is limited with priority for disabled access. Further parking at Morrison's around the corner.

Contacts: Sarah Aikens and Olivia Tullett: membership@wildlifebcn.org

The Wildlife Trust for Bedfordshire, Cambridgeshire and Northamptonshire, The Manor House, Broad Street, Cambourne, CB23 6DH Tel: 01954 713500 Email: cambridgeshire@wildlifebcn.org Registered charity No. 1000412

November 5 and 11 Days to Remember

A poem by Keith Warburton

(Then)

The starshell burst above them
and their faces quickly ducked,
pressing into the dirt.

*Please god let them not see me
– let them see someone else*

The crackle of rifle fire
the boom of the guns
the shriek of incoming rockets,
incessant, close and close and closer
still.

Pray god not me, not yet, not this time

And now the screams and cries of men
wanting their mothers,
the comfort of the breast.

Fighting now not for king or country,
but fighting to control bladder and
bowels.

(Now)

The old man looks through the
rattling window.

Flashes and crackles illuminate his
room.

The screams of children, excited as
another rocket
races towards the heavens and booms
sudden brightness

And he prays: *Please stop. No more.*
He closes the curtain
and sits trembling in the dark
Hands over his ears,
and tears on his cheeks.

Photo of the month



This month's photo was taken by Gareth Squance and shows an aerial view of the 2023 Gamlingay fireworks display in full swing.

This display is organised each year by the Friends of Gamlingay Village Primary to raise funds for equipment and experiences for the children of GVP. You may be interested to know that, for the last few years, the fireworks themselves have been done by the same people who do the New Year's Eve fireworks in London. Not bad, for a village show!

This year's display will be on **Sunday 3 November**.

Fireworks can be a divisive topic, especially for pet owners (and indeed the poem opposite offers another interesting perspective on the subject) – but, as this striking photo well illustrates, they are certainly spectacular!

Many thanks to Gareth Squance for permission for us to use his photo.

Please send your photos of local views, nature, wildlife or landmarks to: editor@gamlingaygazette.uk

A promotional poster for the Gamlingay Fireworks Spectacular. The background features several colorful fireworks exploding in the night sky. In the top left corner is the logo for 'Friends of Gamlingay Village Primary'. In the top right corner is the logo for 'TITANIUM FIREWORKS' with the tagline 'THE SQUARE IN THE AIR'. The main text reads 'THE FRIENDS OF GAMLINGAY VILLAGE PRIMARY PROUDLY PRESENT...' followed by 'FIREWORKS SPECTACULAR!' in large, bold, blue letters. Below this, the date 'Sunday 3rd November 2024' is written in yellow. A list of details follows: '* Gates open: 4:00pm *', '* Fireworks: 5:30pm *', '* Gamlingay Eco Hub *', '* £7 in advance * £8 on the gate * Children 3 and under FREE *', '* BBQ * Refreshments * Glowies *'. At the bottom, it says 'Details on purchasing tickets will be released soon!' and 'Very limited parking: please be considerate and walk if possible. No personal fireworks or sparklers.' In the bottom right corner, there is a small logo for 'Generously supported by GAMLINGAY PARISH COUNCIL'.



Historyman

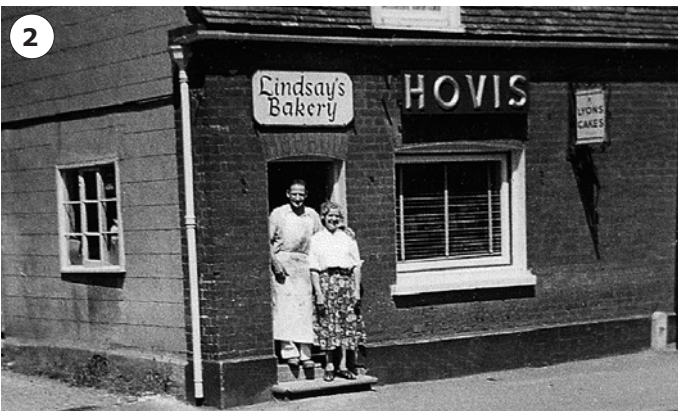
by Nick Bruce

The craftspeople of Gamlingay

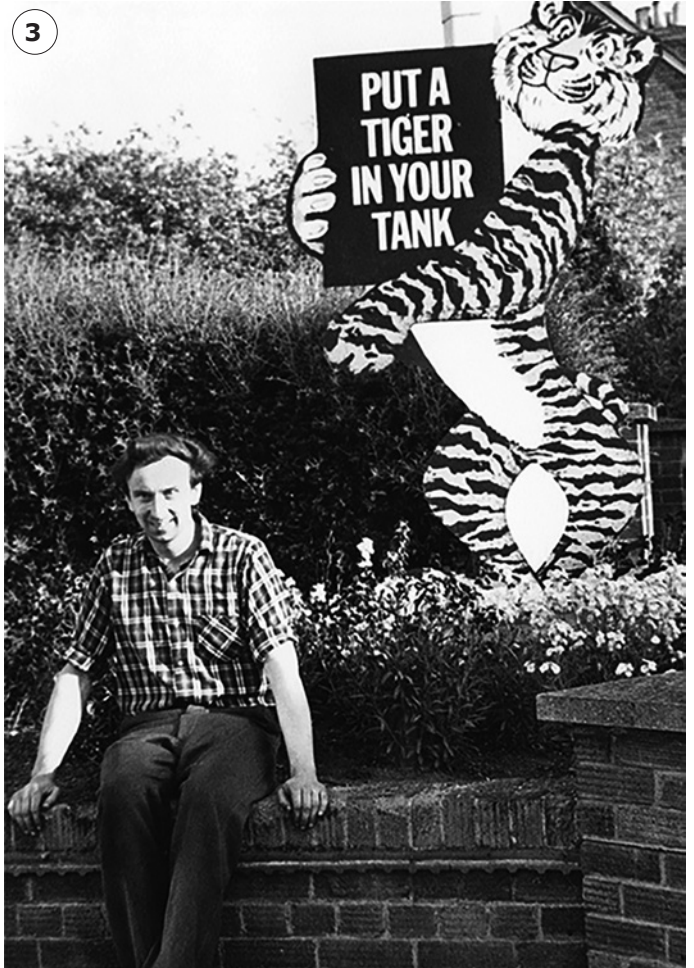
This month, we look at some of the people from Gamlingay's past who had a special craft or skill, either in their work or hobby or both – some were more unusual, and some were found in everyday life. In a small rural village many years ago, some people would make a wage from skills that would today be considered hobbies. Some people would have had skills in their jobs that have changed greatly through the years. Some people's skills didn't need many tools – just a spanner and screwdriver or two, and they did the rest.



Pic 1: Mrs Susanah Panter was born in 1826 and lived at Dennis Green. She was a lace-maker and a seller of tea. These two skills were very different from each other but, together, enabled her to make a living. She went on to teach her skill to others; some of her lace is still around today and lace-making is still practised in the village.



Pic 2: Bakers hone their skills over many years, sometimes mixing, kneading and baking hundreds of loaves in a single morning. This baker is Jack George, who worked for Lindsay's Bakery in Church Street until his retirement in the 1970s. He would meet the flour and grain lorries on delivery day, help unload them, then make the bread – with the first batch ready for 8.00am for shop opening or the delivery van to take bread to Lindsay's other two shops. As a sideline Jack would use the bread ovens to roast turkeys for the people of the village on Christmas day.



Pic 3: Keith Worboys is seen here outside the family garage in Mill Street in the 1960s, with his skill being a motor mechanic and engineer. Traditional mechanics like Keith could strip down a whole engine and car and rebuild it so it ran like new. This skill was usually learnt doing a one- or two-year apprenticeship, probably with day release at college. Their skills would then continue to be honed through many years of practice and experience.



Pic 4: Building an ornamental bridge in the gardens of the First School in around 1957 proved to be the start of a successful career for Len Jarvis (left), starting out in what was to become his trade for the rest of his working life, as a master builder. Len specialised in renovating old buildings and was highly respected in the region.



Pic 5: This picture from around 1970 shows Colin Knibbs in his butchers in Church Street, where he worked with four generations of his family. The skills of meat-cutting and cooking for cold meats and pies ran through his family and many who worked in the shop. I was once told a butcher would sometimes keep their set of knives for their whole career, sharpening them daily to their own preference.



Pic 6: In this 1911 photo, we see workers taking a break at Wrights Wheelwrights on Green End. The adults shown from left to right are: Arthur Wright, Sam Rainsford, Albert Wright and George Wright – all skilled carpenters. The lad seated second from the left made the tea and ran errands. Wrights was founded by Edward & Albert Wright in 1750. It opened as a wheelwrights, then became a carpenters and sawmill. A large saw used by the firm was invented and patented by George in 1918.



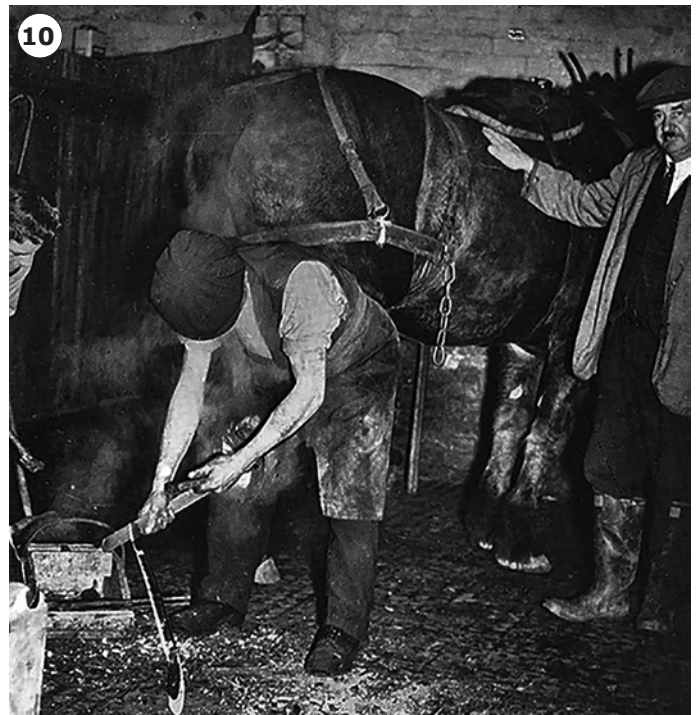
Pic 7: Gamlingay once had two windmills – the better known of these was on the left-hand side as you leave the village on Potton Road, near Brogan Group's yard. The best-known miller was Alfred Coarse, who worked closely with his dog Clyde and had a skill of his own in Gamlingay.



Pic 8: This photo from the 1950s shows Bob Jakes, market gardener and flower grower, in the greenhouses that stood close to where Bell Foundry Close now is. Market gardeners were a hard-working bunch, working from 5.00am until sometimes late into the night as the seasons went by. Many owned or rented land around the village and travelled around each day to do their work. They were skilled in growing many crops and would either have their crops collected by lorries in the afternoons, or deliver produce themselves around the village.



Pic 9: Harry Larkins, shown here in around 1941, was a hurdle, fence and gate-maker from a family that ran through five generations in Gamlingay and Potton. He began work with a partner, George Clarke, near the station, then later worked by himself in Little Heath. Harry had his work sold all over Bedfordshire and, impressively, his hurdles and fences were used at Newmarket.



Pic 10: This photo shows a smithy at Home Farm (farmed by COPOs) in 1941. Nowadays, farriers have vans and gas forges, but the skill of shaping and working the horseshoes to fit perfectly – whether to work, to race or to ride for pleasure – is basically unchanged. As well as its travelling farriers, Gamlingay had two smithies in Church Street: one where the Chinese takeaway now is, and the other on the end of the Almshouses Chapel.



Rooms from
£1,000
per week



Daycare from
£60 half day
£100 full day



Potton View Care Home

Potton View is a lovely care home on Potton Road in Gamlingay.

The home provides short term, respite care and longer term support for older people.

The rooms are decorated to an exceptionally high standard and feature ensuite facilities. There are large, communal living and dining areas and we have lovely, well-kept gardens where we host events with families and our local community.

Daycare, short-term and longer-term stays are available at the home. To find out more, please speak to our manager Zara or visit us online.

Tel: **01767 654866**

Email: **PottonView@blackswan.co.uk**

Web: **www.blackswan.co.uk**



**1 Green End Industrial Estate
Gamlingay, Sandy SG19 3LB**

We are your local, friendly one-stop garage for all your vehicle needs where our team of experienced mechanics provide:

MOTs | SERVICING | DIAGNOSTICS | TYRES & EXHAUSTS

Opening hours Monday to Friday 8.00am to 4.00pm | Courtesy car available

Please contact us for more information or to book a service:

Tel: **01767 651653 | 01767 650380** | Email: **colemanandcraft@gmail.com**

Gamlingay ... a personal perspective

One of a series of features giving villagers of all ages a chance to share their views and experiences of Gamlingay

Name: Sarah Jeffrey

Age: 51

Tell us a bit about yourself...

I moved to Gamlingay in 1999 with my (then) husband. I grew up in Bushey, then fell in love with Wales on a holiday, so the original plan had been to relocate there. Moving up the A1 felt like a first step towards a more rural life, and it was certainly a lot cheaper than Bushey! Gamlingay felt like home from the start, so I stayed.

I'm trained as a primary school teacher and taught for many years in Royston and Steeple Morden. In 2002, my son Evan was born. Not long after that, my marriage broke down.

Evan was a one-off. A brilliant, funny, kind, nerdy boy who loved maths, physics, Poke-Mon and his friends -- and whose ridiculous ideas and dry one-liners had us all in stitches. He was first diagnosed with liver cancer when he was eight. After some gruelling treatments, we thought he was cured. It was a complete shock to discover, just before his five-year check-up, that the cancer had returned and that this time it was incurable.

During his final illness, Ev wanted to raise funds for Addenbrookes. As a result of his efforts, they now have an interactive floor in the children's cancer unit. He was also determined to reach his education goals and managed to take his Maths GCSE before he passed away in 2016. He was the first (and so far, I'm pleased to say, only) person to be buried in the children's section of the new cemetery.

Just before Ev died, the County Council decided that I'd had enough time off work, and they terminated my teaching contract. For years, I'd been a teacher and a mum: suddenly, within a few weeks, I was neither. But the evening after Ev passed away, I was at the hospice with my friends, and I found myself saying "I'm so lucky". My friends were like... "What?!". I meant it though. I could have been doing it on my own, but I wasn't. They were



Sarah with dog, Dilly

there to support me, and I'll never forget that, or have enough words to thank them.

I had to work out what to do next. I took on some upcycling projects and found that I enjoyed them. Parents also started asking me to tutor their children, and I began building both things into businesses. Then I got chronic fatigue syndrome, and had to cut down -- so I decided to focus on the tutoring.

I was able to recover from chronic fatigue using MindBody Reconnect. I've since trained as a practitioner and I've helped people across the world (from LA to Finland!) suffering from chronic fatigue, fibromyalgia, anxiety, depression and other autoimmune diseases.

More recently, a new chapter of my life has begun with my marriage to Gary in 2021. I am so lucky to have him in my life.

What do you like about Gamlingay?

I have an incredible base of friendship here. I've experienced first-hand how people rally together when something goes wrong. My biggest fear in the long-term is being lonely, but there is no need to be lonely in this village. There is so much to bring people together -- The Connect Café, the

Backroom Café, The Eco Hub activities, the Christmas lights, fetes and parties. I honestly couldn't get up every day without the support of this community and I will never be leaving it!

Is there anything you would change about the village?

Absolutely nothing: I love it here.

What is your favourite place in Gamlingay, and why?

I would say my home. It's full of Ev, and it's full of Gary -- and people know that my door is always open. I have Ev's dog, Dilly, too -- her unconditional love helps other people feel comfortable when they are talking to me.

What is your least favourite place in Gamlingay, and why?

Perhaps the pot-hole roads, or perhaps some of the more negative threads on Facebook... but you're going to get that wherever you are.

Can you tell us a story about the village or something that happened here?

My wedding to Gary in 2021 was something else -- a real community thing that brought everyone I love together. It was in a marquee in a field owned by a pupil's family, decorated by my friend Sam, with fish and chips and an ice cream van. Everyone there knew what I'd been through and were all there to wish me well on a new journey.

Is there anything else you'd like to share?

I try to live my life as positively as I can. If I see someone looking miserable, I try to cheer them up. You have to make the most of the time you have. And you have to get up and do something. And if you see someone who is struggling, who is ill, or who has recently lost someone -- don't cross the road. Talk to them, and don't worry about saying the "wrong" thing.

As told by Sarah to Catherine Travers. If you'd like to be featured in a future issue, please email editor@gamlingaygazette.uk. You can be interviewed in person, by phone, or send your thoughts by email in your own time.

Councillors' Column

Keeping us up-to-date on South Cambridgeshire District Council (SCDC) and Cambridgeshire County Council (CCC) matters.

Your councillors are always ready to help.

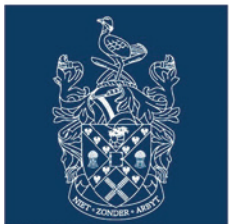
If you have any questions about the following matters or, indeed, any other council matter that you may need help with, then please do not hesitate in contacting: Bridget Smith, your District Councillor at Cllr.BridgetSmith@scambs.gov.uk, and Sebastian Kindersley, your County Councillor, on 01767 651 982, at skindersley@hotmail.com or write to Manor Barn, East Hatley SG19 3JA and follow on X (formerly Twitter) @SebKindersley and on Facebook.



Cambridgeshire
County Council



Councillor
Sebastian Kindersley



South
Cambridgeshire
District Council



Councillor
Bridget Smith

Gamlingay Village Primary

Congratulations to all involved with Gamlingay Village Primary, which has been judged 'Good' at its latest Ofsted inspection – and especially to the pupils, who clearly made a big and positive impression on the inspectors with comments such as "Pupils value that staff have thought carefully about how best to cater for their needs. Where pupils struggle with their own

behaviour, staff support them to cope well. This means that lessons are calm and focused and interactions around the school are positive and kind."

School place appeal panel volunteers

All parents or carers have the right to make an appeal to an independent appeal panel if their child is not offered a place at their preferred school. Volunteers are urgently needed to sit on these independent appeal panels.

The role of the panel is to decide whether a child who has been refused a place by Cambridgeshire County Council should be given a place. All parties involved must be given an appeal hearing that is transparent, accessible, independent and impartial.

The appeal panel is independent of the local authority and its decisions are binding on all parties, unless overturned by the courts. Volunteers will sit on the independent admission appeal panels and ensure that parents feel they have had a fair and independent hearing and have been given every opportunity to put their case and have been taken seriously.

The time commitment depends on how much time volunteers are will-

ing to give. While appeals are held throughout the year, the peak months are between April and July. The appeals are arranged either for half a day or a full day, and hearings are currently held online using Microsoft Teams. Anyone interested in applying or who would like an informal chat about the role should contact clare.cronk@cambridgeshire.gov.uk

Vaccination update

Vaccinations are now available for eligible people against a range of conditions including Covid, flu, pneumonia, shingles and respiratory syncytial virus (RSV). Local GP practices are calling up eligible patients. You can also find out more at www.cpics.org.uk/the-vaccinators/ and book with a local pharmacy or attend a convenient drop-in session without an appointment.

Bluetongue

In late September, the Bluetongue Restriction Zone, which had previously covered most of the east coast of England, was extended further inland, incorporating Cambridgeshire and Peterborough. This brings in certain restrictions for keepers of susceptible animals in our area. The restric-

POTTON WINDOWS LTD

Quality PVCu
Windows and Doors
Secured by Design

FENSA and 10-year Guarantee
Professional Service Assured

Misted-up double glazed units
replaced

Tel: 01767 260626

E-mail:
sales@pottonwindows.co.uk

SCOTT ROOFING LTD

Roofing Specialist

Your local traditional Roofer
Free quotations and advice

All roofing works undertaken:
tiling - slating - felt flat roofs - repairs - chimney re-pointing -
insulation - fascias/gutters - moss removal - new roofs - lead work

Call Scott:

Mob 07834 777 134
Tel 01767 651 626

Proudly serving the village for over 15 years

tions can be viewed at gov.uk but, in essence, they seek to restrict movement of susceptible animals, to reduce the spread of the disease from the restricted parts of England to the areas that fall outside the zone. Some movements are permitted under General Licence, whilst other movements need a specific licence to be issued.

Bluetongue (BTV) is a viral disease which affects ruminants (such as cattle, sheep, goats and deer) and camelids (such as alpacas and llamas). It is caused by a virus that is spread by biting midges. It is classified as a 'notifiable disease', which means livestock keepers have a legal obligation to report any signs of the disease in their stock to the Department for Environment, Food and Rural Affairs (DEFRA) immediately on 03000 200 301.

It does not pose a risk to public health or food safety.

Weeds

The first round of weed treatment, for those communities wishing to have this, is now coming to an end, and the second round will begin in October.

Winter gritting

Preparations are underway for the 2024 winter, which – from a gritting perspective – starts on Friday 1 November: salt barns are being replenished and gritting vehicles are being serviced.

Climate change progress report and carbon footprint

For Cambridgeshire as a whole, in 2022 (the most recent available data) total greenhouse gas emissions were 6.45 million tonnes CO₂e, a 3% fall

from 2021. Transport (27%) remains the highest emitting sector in the county, followed by land use, land use change and forestry (LULUCF) (23%), agriculture (15%) and domestic energy use (13%). The risk of not reaching the Council's carbon targets has reduced, but still remains considerable. Delivery of these targets relies on collaborating with our partner organisations.

More broadband

Openreach's broadband upgrade plans for Cambridgeshire were announced at the end of May, meaning full fibre broadband is heading to a further 16 Cambridgeshire towns and villages (including Steeple Morden), as part of a huge upgrade.

Household Support Fund

The government has just announced an extension to the Household Support Fund for the next six months, to support struggling households with bills and essential costs.

The £421 million extension gives certainty to councils in England over the winter months – up until April 2025 – as they work to help those struggling with the cost of energy, food, and water.

Many councils also use the funding beyond emergency support, including working with local charities and community groups to provide residents with key appliances, school uniforms, cookery classes, and items to improve energy efficiency in the home.

Pensioners and others struggling to heat their homes or afford other essential items over the colder months should contact their council to see

what support may be available to them. Details on the latest scheme will be communicated in the coming weeks.

Pension Credit

Pension Credit is worth, on average, £3,900 per year and unlocks additional support including the Winter Fuel Payment, help with Council Tax, NHS dental care and a free TV licence for those over 75. Pension Credit back-dating rules mean it is possible for individuals to apply for Pension Credit and have the claim backdated by up to three months if they were entitled to claim in that time. This means that the latest date to apply and still qualify for a Winter Fuel Payment is 21 December.

The Department for Work and Pensions has produced a toolkit to support councils to ensure older people understand how they can get Pension Credit – see: www.gov.uk/government/publications/pension-credit-toolkit.

Energy bills

If you're struggling to pay your energy bills or can't afford to heat your home, another potential source of support is LEAP (Local Energy Advice Partnership), who can be contacted on 0800 060 7567 or support@applyforleap.org.uk.

Housing adaptations

Disabled Facilities Grants are available for residents of South Cambs to carry out adaptations to their houses, whether they are homeowners, private renters or live in social or council homes. This means that people are able

LIBERTY

Conservatories, summerhouses, doors, windows and all related repairs. Quality PVCu and aluminium specialist.

Conservatories	Sash Windows	Guttering	Doors
Orangeries	Casement Windows	Verandas	
Canopies	Bi Folding Doors	Fascias	

For a no obligation quotation

Matthew Sanders 07976 586 615

Tel: 01767 220 621

email msanders471@btinternet.com

Office 71 Station Road, Tempsford SG19 2AX

A FENSA Registered Company, 10-Year Insurance Backed Guarantee

GARY HARE

Property Improvements

All aspects of carpentry,
internal/external doors
Real wood/laminate floors
Bathrooms
Kitchens designed, supplied, fitted
Ceramic wall and floor tiling
External and internal painting,
decorating and wallpapering
Complete property refurbishment

Telephone: 01767 651 821

Mobile: 0777 397 3420

*City and Guilds
25 years experience*

to remain living independently in their own homes for longer. You can apply at www.gov.uk/apply-disabled-facilities-grant

Support for affordable housing tenants

Local residents in affordable housing who are struggling to make ends meet have recently been contacting us. The SCDC Welfare and Benefits Team (01954 713000) and Citizens Advice (www.citizensadvice.org.uk) can help with access to financial support. The Cambridgeshire Community Foundation helps disperse support and accepts donations too.

Bus passes and franchising

The Cambridgeshire and Peterborough Combined Authority's Transport & Infrastructure Committee is recommending that the Board allow older people and those with disabilities to use their bus passes before the current 9.30am start.

A new Tiger Pass is now also available, offering bus travel for £1 per journey to those aged up to 25. Details of how to apply for the new pass can be found at cambridgeshirepeterborough-ca.gov.uk/onepoundbusfare

The Vision Zero road safety project is being revived. Its aims are to reduce the numbers of people killed or seriously injured on our roads and the social and financial impact of this, and to develop financially sustainable models of road safety activity. The original prospectus in 2020 aimed for zero killed or seriously injured by 2040 – though this seems unlikely to be met.

Finally, a reminder that the Combined Authority's consultation on bus franchising continues until 20 November. Short and long questionnaires can be found at cpca-yourvoice.co.uk/bus-franchising-consultation

Changes to voting rights

The South Cambs elections team is currently undertaking a review of all EU electors held on the Electoral Register. This is a statutory exercise required by the Elections Act 2022. Recent changes to voting and candidacy rights for EU citizens mean that **not all EU citizens will qualify to register to vote** or be a candidate at local elections going forward.

Under the new rules, a citizen from an EU country is only entitled to remain registered if they meet one of the following criteria: a citizen of Denmark, Luxembourg, Poland, Portugal

or Spain (with whom we have a reciprocal agreement) or a citizen of any other EU country who on or before 31 December 2020 had permission to enter or stay in the UK, Channel Islands or Isle of Man or who did not need permission, and this has continued without a break.

Release from best value notice

The Cambridgeshire and Peterborough Combined Authority has now been released from the 'Best Value Notice' placed on it in January 2023, as the Government has recognised the improvement in the organisation.

Your Councillors are here to help you. Please do feel free to contact us with comments, questions, problems or complaints. We hope we can help but if we can't we are likely to know someone who can!



New year, new Christmas lights!

The Parish Council explains why our village streets will look a little different this December...

It will soon be time to dust off those Christmas jumpers... and this year, Gamlingay's streets will be looking a little different. We are very pleased to let you know that the Parish Council has purchased new rope lights to wrap around lampposts in the village this year, to replace the 13 motifs we have used since 2014.

The original motifs were purchased following a fundraising appeal kickstarted by young Rachel Mingay and supported generously by local businesses and residents. These motifs were sold to another local council and the funds used towards the new ones.

New sockets have been fitted to ten more lampposts, so this year's display will extend part way down Mill Street/Waresley Road

and Green End – 21 lights in total (eight more than previously).

Please be aware that there are three lampposts on Church Street that Balfour Beatty have told us we cannot use this season as they are due to be replaced.

The new lights will be switched on either on **30 November** or **1 December** (depending on when the contractors can fit it into their seasonal schedule). Volunteers are planning an event around the switch-on, so please save the date(s) and keep an eye on the *Gazette* and the 'Christmas Lights' Facebook group for updates: www.facebook.com/groups/220773649645030

More volunteers are very welcome!

ELECTRICIAN



- Specialist In Fault Diagnosis
- Friendly & Reliable
- No Job To Small

Call Mike On
07791520731
mjasparks@gmail.com





Update from How Are You South Cambs

Find details on a great range of activities and support at haysouthcambs.co.uk – some are listed below but there are plenty more!

Events and feedback

◆ Cambs Digi Fest

A range of events to explore topics linked to digital inclusion and learning IT skills. cambridgeshiredigital-partnership.org.uk/2024/09/09/cambs-digi-fest-2024

◆ The Library Presents

Arts activities and performances for all ages and interests as part of the annual 'The Library Presents' festival. Find out what's happening near you and book on this link: www.library.live/the-library-presents

◆ International men's day

Activities for men who work for, or are in the care of, the NHS social care or voluntary sector. For more info, text 07974 260074 or email john.nicholson@cpft.nhs.uk

◆ Christmas activities funding for older people

From 1 September McCarthy Stone Foundation will accept applications for grants of up to £1,000 to fund Christmas events/activities hosting people aged 65 and over. mccarthystonefoundation.org/our-grant-programmes/

◆ Feedback about Dementia Services

The SUN Network and NHS is gathering feedback about people's experience of dementia services locally. Contact Rachel Nightingale (Rachel.nightingale@sunnetwork).

haysouthcambs.co.uk / 07521 993364) to find out more about how to contribute your views.

New support resources/courses:

◆ Hoarding and decluttering support

Includes links to local and national organisations that can provide support and advice to those living with excess clutter in their home. haysouthcambs.co.uk/support/hoarding-and-decluttering-support/

◆ RCE Wellbeing courses

Free wellbeing and mindfulness sessions throughout the autumn. www.cpft.nhs.uk/rce-wellbeing-hub

◆ STOP Suicide Workshops for LGBTQ+, migrant, neurodivergent communities

Free three-hour sessions, both online and in person in accessible venues across Cambridgeshire. stopsuicidepledge.org/training-and-community-talks/

◆ Supporting your anxious child

Free course where parents can come together to learn how to recognise and manage childhood anxiety. Offered in St Ives, Waterbeach or online with November start dates. Find out more about this and other courses at www.cambslearntogether.co.uk/cambridgeshire-course-directory

SANCTUM
Beauty and wellness
over 40+ years in industry

Appointment only

We are a local beauty salon offering a full range of holistic and beauty treatments. Simply scan to find out more!

the White Haus, Clopton farm, Lower Rd,
Croydon, SG8 0EF
www.sanctumbeautywellness.co.uk
01763449005

Gamlingay Social Club



A family-friendly community Social Club

*We warmly welcome new members into our
comfortable and spacious venue.*

Come along, bring the family, and try us out.

Bring this advert with you for free entry (excludes entertainment nights)

- Snooker table
- Pool table
- Dartboards



Regular programme of
entertainment evenings

Bingo
Friday evenings
Quiz Night
every other Thursday evening
...new teams welcome

Most competitive drinks in the village

Beers from £3.95 | Spirits from £2.90

Fully air conditioned | Available for hire

See our Face Book page for more information

16 Waresley Road, Gamlingay SG19 3EJ



Gamlingay United Football Club

Latest results

U7s

- 14/09 League vs Camborne (home)
Lost 2-12
Goals: Teddy, Alfred
POM: Teddy
- 21/09 Friendly vs Longstanton (away)
Won 1-6
Goals: Tommy 2, Alfred 2, Patrick, Teddy
POM: Harley

After two years of training together, and some friendlies, the newest team kicked off their first league game against the Camborne team that they had already played in their first friendly some months ago. Despite the defeat, the progress the team has made in a short space of time was clear to see. The team are enjoying the new experience of regular matches.



U8s

- 21/08 vs Queen Edith (away)
Won 5-6
Goals: Frankie 4, Reuben, George
POM: Frankie

A great start to the season with an away win against a tough opposition; a well-worked last-minute goal secured the win.



U9s

- 14/09 vs Trumpington (home)
Won 1-0
Goals: Leyton
POM: Reggie
- 21/09 vs Cottenham blacks (away)
Won 2-4
Goals: Jamie, Reggie, o/g, Bobby
POM: Teddy

The U9s have started the new season on a high, winning their first two games. They have also coped extremely well with the larger pitch and the rule changes to 'no throw ins'.

U10s

- 14/09 vs Haverhill (away)
Won 5-6
Goals: Sam 2, Ezra 2, Henry, Zac
POM: Sam
- Good, hard-earned win in the first game of the season. Late goal from Zac to secure the win.*

U11s

- 14/09 vs Lakenheath (away)
Lost 5-4
Goals: Harry, Max, Isaac, Thomas
POM: Harry and Logan
- 21/09 vs Ely (away)
Drew 5-5
Goals: Max 3, Jay, Archie
POM: Archie

Positive start in front of goal for the U11s while adjusting to nine-a-side and offsides; great determination shown in both matches!

U12s

- 31/08 Cambourne tournament winners
- 1/09 vs Histon (home)
Lost 2-5
Goals: Caspar and Tomas
POM: Ashton
- 14/09 vs St. Neots Town (away)
Drew 1-1
Goals: Tomas
POM: Tomas

U14s

- 14/09 vs Isleham Red (away)
Won 0-5
Goals: Dean 2, Ed 2, Harry
POM: Dean
- 21/09 vs Red Lodge (away)
Won 3-4
Goals: Dean 2, Noah, Freddie
POM: Harrison

U16s

- 07/09 vs Bottisham (away)
Won 1-2
Goals: Ollie 2
POM: Roman
- 14/09 vs Histon (away)
Won 0-5
Goals: Alfie, Elliott, Luke, Ollie T, Ollie C
POM: Alfie

Saturday Seniors

- 07/09 vs Melbourn (away)
Won 0-5
Goals: Kersey 2, Macrow, Subocz-Schram, Churms
- 14/09 vs Histon Hornets (away)
Lost 1-0
- 21/09 vs Hardwick Reserves (away)
Won 4-1
Goals: C. Sharp, Kennedy, Churms, o.g.

With previous manager James Enfield taking over the reins again, the team has made a good start to the 2024/25 season. A disappointing result sandwiched between two strong performances puts the club in second position after three games. Hopefully the good form can continue and the goals keep flowing.

Saturday Vets

- 08/09 vs Sawston (away)
Lost 4-3
Goals: Critchley, Horwood, Careless
POM: Critchley

Really good performance with a depreciated squad against a strong Sawston side in our first game of the season. Unlucky not to walk away with at least a point but positive signs for the season ahead.

What about Bowls and Netball?!



Gamlingay Bowls Club and Gamlingay Netball are in their off seasons and hence there are no updates for this issue of the Gazette. Netball should be back next month, and the Bowls club will be back in the spring.



James Brickwork and Building

JAMES CLEMENTS
The Gables
5 Mill Street
Gamlingay
SG19 3JW



Mobile:
07775 874 642

Extensions - Block Paving
Patios - Fireplaces - Walling

Grovemount Limited

General Builders

All building & refurbishment work undertaken.

PVCu windows, doors & conservatories.

Potton Road The Heath, Gamlingay

Tel: 01767 651 299

505 CARS

Gamlingay

**Airport
Transfer
Specialists**

Call or email to book

01767 650 505

07866 328 020

office@505cars.co.uk

VOLUNTEER DRIVERS

Community Transport Scheme

Call 07519 493 701



POTTON MOTOR COMPANY

Quality Used Cars with a Professional Service
Selected used cars bought for cash

With over 30 years experience, I aim to provide you with a professional service.

I stock a small selection of hand picked pre-owned cars, prepared to the highest standard.



www.pottonmotorcompany.co.uk

Green End Industrial Estate, Gamlingay

To book an appointment please get in contact:

01767 652869 | 07890 413306



Let us find the right Mortgage for you :

- First Time Buyer
- Moving Home
- Remortgages
- Buy To Let

We can also help with the following :

- Life Cover
- Buildings and Contents
- Critical Illness
- Landlord Insurance
- Income Protection

Contact us for a free initial consultation:
Tel: 07473 377015 Email: alan@sfmortgages.co.uk

YOUR HOME MAY BE REPOSSESSED IF YOU DO NOT KEEP UP REPAYMENTS ON YOUR MORTGAGE

Cheese soufflé

A recipe from Roderick Starksfield

Photo by Alison Pang on Unsplash



I was reminded of this classic dish when talking with the family about food in the '70s; my mother would make it quite frequently. I haven't heard of it for a long time.

Many people believe soufflés to be difficult to make, but they are really quite easy. This recipe uses yeast extract: I know some people hate this, but you can't taste it except for the lovely umami taste it contributes.

Serves: 4

Ingredients

- 400ml milk
- 2 banana shallots (halved)
- 1 bay leaf
- 1 small bunch thyme
- 6 cracked peppercorns
- 6 cloves
- 75g butter
- 50g plain flour
- 200g mature cheddar (grated)
- a few tablespoons grated hard cheese (e.g. parmesan)
- 1 tsp yeast extract (optional)
- 1 tsp English dry mustard
- 1 tsp cayenne pepper
- 4 eggs, separated, plus one extra egg white (the spare egg yolk can be frozen or used to make, say, some mayonnaise)

Method

- Preheat the oven to 220°C/200°C fan/Gas 6.
- Place a baking tray in the oven to heat.
- Use a pastry brush to line a 12cm soufflé dish with some of the butter, and dust it with a little of the grated hard cheese.
- Flavour the milk by putting it in a non-stick pan and adding the shallots, bay, thyme, peppercorns and cloves. Bring to a gentle simmer, then remove from the heat and set aside to cool and infuse. After 15 minutes, strain the cooled

flavoured milk through a fine sieve into a jug.

- Now make a white sauce by melting the butter in a medium non-stick pan over a low heat. Stir the flour into the melted butter. Cook for a few seconds then gradually start adding the flavoured milk, just a little at a time, stirring well between each addition.
- When the sauce is smooth and very thick, continue to cook for a further 2 minutes, stirring constantly, then remove from the heat and stir in the grated cheddar cheese. Add the yeast extract and mustard, if using.
- Whisk the egg yolks lightly and stir them into the cheese mixture until smooth. Pour the resulting mix into a large mixing bowl and cover the surface with a sheet of cling film to prevent a skin forming.
- Using electric beaters, whisk the egg whites with a pinch of salt until stiff but not dry. They are ready when you can turn the bowl upside down without them sliding out.
- Working quickly, remove the cling film from the cheesy sauce. Take a large spoonful of the egg white and fold into the sauce to loosen, then carefully fold in the rest.
- Pour the folded mixture slowly into the prepared soufflé dish. Flatten the top with a knife blade, and run your thumb round the rim to make a small indentation. Sprinkle with the remainder of the grated parmesan and a little ground black pepper.
- Bake on the preheated baking tray in the oven for 25–30 minutes, or until puffed up and golden brown.
- Once you take it out of the oven, serve the soufflé immediately, before it has a chance to sink. It should be a little soft in the center when it is served, so make sure you don't overcook it.
- Serve with a watercress salad and a glass of white wine.



Quiz and Puzzle Corner

by Kevin Bentley

Komino rules

Using the whole list of reversible digit pairs, complete the grid so that each box contains one pair. A digit cannot be beside the same digit in an adjacent box. Boxes containing a pair of identical digits cannot be side by side.

Komino

		1	3	4
	2			
		1		4
		6		
				5

Copyright © 2024 Kevin Bentley. All rights reserved.

Medium

0 0	0 3	0 5
0 6	1 2	1 3
2 2	2 4	2 5
3 4	4 5	

🔑 October Solution

4	6	4	7	2	4
4	0		1		2
9	6	4	8	4	8
8		5		0	5
3	1	4	3	4	6

Komino Notes:

I hope you have enjoyed the challenge of solving this Komino puzzle. There are more in my book of 200 Komino Puzzles, which is currently available with 20% off the retail price from my publishers (Troubador) for £8.00 at: troubador.co.uk/bookshop/sport-hobbies/komino-puzzles using discount code **KMNTC1**

Wendy Hall
BSc(Hons) MRCPod.

Chiropodist/Podiatrist

Moor Farm Cottage, Potton Road,
Abbotsley, St Neots, Cambridgeshire,
PE19 6TY

Telephone 01767 677 554
Mobile 07926 355 884

For all kinds of foot problems:
corns, callus, bunions, nail trims
all in the comfort of your own home
or at my surgery.

J Edward Bradshawe
Atcomputers
Contact-man.com

9 Honey Hill, Gamlingay, Sandy
Beds SG19 3JU

Consultancy	Hardware supplies
Bespoke software	E-Trading systems
Web/Cloud systems	Computer system design

The Online Manager
Yourname.contact-man.com
All your contacts here online on all devices

Phone: +44(0) 1767 650 429
web: jedwardbradshawe.co.uk

Simple Solutions
(Cambs) Limited

Accounting & Administration for the small business

Small business? Find record keeping a chore? Not really sure what you should be doing?

Let us help – we can take the whole job off your hands or give you the training to complete it yourself –

Accountancy, Bookkeeping, Payroll,
VAT, CIS, 1-1 Training

Whatever you need we have the Solution!

For a free consultation contact
01767 677562 or
admin@simplesolutionscambs.co.uk

What's On

Send your entries to whatson@gamlingaygazette.uk

Beginners Breeze	Thursdays 7 November	Ladies' Cycling. First Thursday of the month at the Eco Hub. Contact gill.kitchener@btinternet.com or 07842 135 732
Bellringers	Thursdays	7.30pm to 9.00pm with John Boocock at St. Mary's, Gamlingay
Bin Collection Days	Thursdays: 7, 21 November 14, 28 November	Black Blue and Green
Booklinks Book Club	Monday 4 November	First Monday of the month, 7.30pm in the Library at the Eco Hub.
Cock Inn	Mondays 11 November	Monthly quiz nights starting at 8.00pm. £2.00 per head for various charities. New teams welcome.
Community Choir	Wednesday 6 November Saturday 16 November	First Wednesday of the month 8.00pm to 9:30pm Third Saturday of the month 10.00am to 12.00noon Both in the Kingspan Hall at the Eco Hub
Connect Café	Fridays	10.30am to 12:30pm at the Eco Hub. All welcome to a friendly drop-in cafe for a cuppa and cake – £2.00 with free drinks refills. Lifts available. Please contact the Eco Hub Manager.
Eco Hub	Every Monday	Zumba Gold – 10.00am to 10.45am Kingfisher Disability Group – 10.00am to 3.00pm Fitness Pilates – 11.00am to 11.45am Movement for Memory – 1.00pm to 2.30pm Street Dance & Freestyle Disco – 4.00pm to 6.50pm (<i>term time only</i>) Rainbow Guides – 6.00pm to 7.00pm (<i>term time only</i>)
	Every Tuesday	Mat Pilates – 10.00am to 10.55am Chair Pilates – 11.05am to 12.00noon Active Ageing Pilates – 12.05pm to 1.00pm Carpet Bowls – 2.00pm to 4.00pm Yoga – 7.15pm to 8.15pm
	Every Wednesday	Fitness to prevent injury – 9.30am to 10.30am Kingfisher Disability Group – 10.00am to 3.00pm Love Art Community Art Group – 10.30am to 12.30pm Puppy training – 2.00pm to 4.00pm Tai Chi – 9.30am to 10.30am Cha Char Chimps, children's fun session – 10.00am to 11.00am Crafty Ladies Craft Group (<i>Gentlemen welcome too!</i>) – 10.00am to 12.00noon Cha Char Baby Chimps Session (<i>For newborns and non-walking babies</i>) – 11.30am to 12.15pm New Age Kurling – 2.00pm to 3.00pm Ballroom and Latin Dance Class – 4.30pm to 5.00pm (<i>term time only</i>) Alice Lucas School of Dance – 5.00pm to 7.45pm (<i>term time only</i>) Mindful Moments – mindfulness and wellbeing – 7.30pm to 8.30pm Kingfisher Disability Group – 10.00am to 3.00pm Connect Café Community Coffee Morning – 10.30am to 12.30pm O'Mahoney Academy Irish Dancing – 9.00am to 10.00am Little Ruggers – 8.00am to 12.15pm (<i>term time only</i>)
	Every Thursday	
	Fortnightly/monthly events	For Men to Talk – first Tuesday of the month, 6.00pm to 8.00pm Memory Lane Group – For people living with dementia and memory loss, and their companions. Fourth Tuesday of the month, 2.00pm to 4.00pm Library Lego Club – first and third Saturdays of the month, 10.00am to 12.00noon
	One off events	Repair Café – Saturday 2 November 1.00pm to 4.00pm Jewellery and gold valuation and buying – Thursday 7 November 12.00noon to 4.00pm New Moon Meditation – Friday 15 November 7.00pm to 8.00pm Christmas Craft Fair – Saturday 16 and Sunday 17 November 12.00noon to 4.00pm Sound Bath – Friday 22 November 7.30pm to 8.30pm
Gamlingay Allotments		Secretary Robert Carolan, gamlingay.allotment@gmail.com

What's On

Send your entries to whatson@gamlingaygazette.uk

Gamlingay Library	Mondays Wednesdays Thursdays Fridays Saturdays Saturdays 5 November	2.00pm to 4.00pm – Preschoolers' Story Time 2.30pm 2.00pm to 4.00pm – Free computer buddying, ask at the library for info 6.00pm to 7.00pm 10.00am to 12noon 10.30am to 12.30pm 10.00am to 12.00noon 10.00am to 12noon – Library Lego Club
Gamlingay Parish Council	Full Council Meeting Tuesday 12 November F&GP Meeting Tuesday 26 November	Meetings held at 7.30pm in the Kier Suite at the Eco Hub and are open to all. Planning Committee Meetings (open to all) at 7.00pm prior to the Full Council and Finance & General Purposes Meetings. Clerks: Leanne Bacon and Kirstin Rayner. Tel: 650 310 or Email: clerk@gamlingay-pc.gov.uk . Agendas available on our Website: www.gamlingay-pc.gov.uk and on noticeboards.
Gamlingay Social Club	Thursdays 7, 21 November Thursdays 14, 28 November Every Friday	Cribbage Fun Quiz Cash prize bingo at 8.30pm
Gamlingay Walkers	Wednesdays 6 November 4 December	First Wednesday morning of the month, followed by optional pub lunch, March to December. Contact Miriam on 01767 654 891 or email miriamjones80@hotmail.com
Greensands Writers	Tuesdays 19 November	Meetings held on the third Tuesday of every month via Zoom. Details on www.greensandwriters.weebly.com
Guild of St. Mary's	Mondays 18 November	Monthly meetings, usually third Monday of the month.
Hatley Coffee Morning	Tuesdays 5 November	10.00am to 1.00pm at Hatley Village Hall. Everyone welcome. Donations on the day split between the Village Hall and Church.
Hatley Parish Council	Third Tuesday of the months January, March, May, July and October	Meetings start at 7.00pm. Contact the Clerk Kim Wilde on 07591 346 835 or email clerk@hatley-pc.gov.uk Details on the website www.hatley.info or noticeboards.
History Society	Tuesdays 12 November	Meetings, open to all, are held at the Eco Hub, Stocks Lane at 7.30pm on the second Tuesday of each month, except January, July and August.
Jelly Tots Baby and Toddlers	Mondays	9.30am to 11.00am. A baby and toddler group for 0-5 years. £2.00 per adult and child plus 50p per extra child. St Mary's Church Hall.
Music Club	Thursdays 14, 28 November	Meetings held every alternate Thursday. For further information call Geoff Bruerton on 01767 650 748.
Photographic Society		Contacts: Nick or Jackie Bruce 01767 651 025/07925 119 346
Potton Ladies Club	Tuesdays 5 November	Meetings on the first Tuesday of the month at the Mill Lane Pavillion, Mill Lane, Potton. Sarah Burgoine: sarahjburgoine@gmail.com or 01767 631 415.
St. Mary's Choir	Thursdays	6.30pm choir practice open to all singers at St. Mary's Church.
St. Mary's Simple Lunches	Tuesdays 5, 19 November	First and third Tuesday of the month. 12.30pm start at St. Mary's Church Hall
The Gazette	Friday 29 November	January/February issue deadline for all copy and adverts.
The Wheatsheaf	Mondays Thursdays Fridays	Quiz on the last Monday of the month, starts at 7.30pm Pizza Van from 5.00pm to 9.00pm Kebab Van from 5.00pm to 9.00pm
Women's Institute	Tuesdays 19 November	In the Kier Suite, Eco Hub at 7.30pm on the third Tuesday of the month. Please come along to our friendly meetings. For further info: Jean 650 367 or 07522 665 901 and Jane 07790 256 703

Village Information

Emergency Services

Police, Ambulance and Fire	999
Non-Emergency Fire	01223 376 217
Non-Emergency Police and Community Police	101
PC Mark Heslop 01480 456 111 <i>(Ask for St Neots Police Station)</i>	

Healthcare and Council

Medical centre	
Appointments	260 340
Out of hours	111
District nurses	08456 024 064
Age Concern	01354 696 650
Homecare	07776 021 611
Anne Hutson	
Community car scheme	07519 493 701
Alison Baker	

Parish Council	650 310
<i>Clerks: Kirstin Rayner, Leanne Bacon at ecohub: clerk@gamlingay-pc.gov.uk web page: www.gamlingay-pc.gov.uk Chairman: Samantha Martin Vice-Chairman: Wendy Boyne</i>	

Faulty Street Lights	0800 7873 247
Library	651 226
Kate Laugharne	
Forward Gamlingay	
Chair: Sarah Groom	

Hatley Parish Council	07591 346 835
<i>Clerk: Kim Wilde Email: clerk@hatley-pc.gov.uk Chairman: Paul Kraus cllr-kraus@hatley-pc.gov.uk</i>	

Politics

Member of Parliament	
Pippa Heylings, MP	
pippa.heylings.mp@parliament.uk	
County Councillor	651 982
Sebastian Kindersley	
District Councillor	
Bridget Smith	03450 450 500
Cllr.BridgetSmith@scams.gov.uk	
Monday-Saturday 08:00 to 20:00	
South Cambridgeshire District Council	
Hatley District Councillor	07885 774 775
Heather Williams	
cllr.williams@scams.gov.uk	

Churches

Baptist Church, Office	Church Office	651 519
	Sally Graves	650 112
St. Mary The Virgin	<i>Rector: Hilary Young</i>	650 587
	<i>Church Warden: to Ann Davis</i>	07970 076 972
	<i>Reader: Chris Miller</i>	650 779

Halls for Hire

Eco Hub	Kate Laugharne	651 226
	manager@gamlingayecohub.org.uk	
Everton Village Hall		682 251
Gamlingay Social Club	Katrina Smith	651 775
Hatley Village Hall	Kim Wilde, www.hatley.info	07591 346 835
Methodist Chapel	Parish Council	650 310
St. Mary's Church	Ann Davis	
	gamlingaychurchhall@gmail.com	

Hobbies, Leisure and Interests

Bell Ringers	John Boocock	650 736
	gamlingaybellringers@gmail.com	
	www.gamlingay-bell-ringers.webador.co.uk	
Booklinks	Kate Laugharne	651 226
Cafe Connect	Ann Kirby	651 134
Community Choir	Jane Orchiston	0753 500 5908
East Beds Model Railway Society	<i>Secretary: John Wakeman</i>	
	wakemanpj@aol.com	
Friends of St Mary's	Helen Miller	677 390
Gamlingay Allotment Gardeners Association (GAGA)	<i>Secretary: Robert Carolan</i>	
	gamlingayallotments@gmail.com	07771 598 810
	<i>Membership Secretary: John Way</i>	
	johnway803@gmail.com	650 114
Gamlingay Archaeological Group (Gamarch)	Chris Tomsett	650 009
	<i>Secretary: Julia Manley</i>	
	julialmanley@yahoo.com	
Gamlingay Players	Amy Lovat, lovat1@hotmail.com	07843 527 979
Gamlingay Walkers	Miriam Titchner	654 891
Gardening Club	<i>Chair: Marcia Kaye</i>	07770 796959
Greensand Writers	www.greensandwriters.wixsite.com	
Guild of St. Mary's	Liz Huckle	650 988
History Society	David Allen	651 472
	gamlingayhistory@gmail.com	
Ladybird Club	Mrs C Watson	650 707
Music Club	Geoff Bruerton	650 748
Photographic Society	<i>Chair/Secretary: Jackie Bruce</i>	651 025
	nickbruce7@btinternet.com	
Royal British Legion	Sebastian Kindersley	651 982
	Jackie Hough	651 070
Sandy and District Round Table	Lee Packham Brown	
Sir John Jacob's Almshouses	<i>Clerk: cwsjjpc@outlook.com</i>	651 120
	<i>Chair: Sebastian Kindersley</i>	651 982

Village Information

St. Neots Model Railway Club	John Kneeshaw j.kneeshaw@ntlworld.com	
Village Show	Jayne Dawkins gamlingayshow@hotmail.com	07713 247973
Women's Institute	Jean York Jane	650 367 or 07522 665 901 07790 256 703

Preschool Groups and Education

Carers Group	Bridget Smith	650 510
Everton Heath Primary Pre-school	Katie May kmay@evertonheath.org.uk	01767 680 534
Jelly Tots & Marvellous Musicians	Lisa Mistrano	07931 356 931
Montessori	Mrs Pat Jenkins	650 645 07714 821 940

School

Gamlingay Primary	650 208
-------------------	---------

Sports

Bowls Club	Brian Culverhouse	651 020
Breeze Ladies Cycling	Gill Kitchener	650 035
Football Club (Youth Teams)	Chair: Brian Culverhouse	651 020
Gamlingay Gym	Jo Treverton info@gamlingayleisure.org.uk	651 785
MUGA Hire		651 785
Gamlingay Netball Club	Gamlingaynetball@gmail.com	
Junior Football School	Brian Culverhouse	651 020
Tennis Club	John Gray	654 165
Waresley Cricket Club	Rod Kerr waresleycc@hotmail.co.uk	07545 453 559

Youth Groups

1st Gamlingay Brownies	Jane Brown	652 997
1st Gamlingay Rainbows	Sarah Galvin gamlingayrainbows@outlook.com	
2nd Gamlingay Guides	Benita Scott	650 547
Beavers	Nicola gamlingay.beavers@gmail.com	
Gamlingay Cubs	Steve Palmer	651 532
Gamlingay Scouts	Charlie Jackson gamlingayscouts@hotmail.com	
Gransden Cubs	Susan Jefferd	261 000
Pathfinder Scouts	Paul O'Shea paul.r.oshea@googlemail.com Paul Bevis Bevis2021@gmail.com	07555 530 996 07779 651 543
Tinuwen Rangers	Irene Gray	651 212
Youth Cafe	Lucy Rands	07929 453 235
Youth Club	Lucy Rands	07929 453 235

Cambridge County Council

Care Services

Adult Health and Social Service General Enquiries	0345 045 5201
Adult Social Care	0345 045 5202
Children's Services	0345 045 5203
Blue Badges Disabled Parking	0345 045 5204
Occupational Health	0345 045 5205
Learning Disability Partnership/Sensory Services	0345 045 5221

General Community Services

Citizenship	0345 045 5155
Education Transport	0345 045 5208
Education Welfare Benefits Service	0345 045 1361
Family Information Service	0345 045 1360
General Enquiries	0345 045 5200
Human Resources (Recruitment Line)	0345 045 5210
Library Services (includes automatic renewals)	0345 045 5225
Online Payments Support	0345 045 5211
Streetscene (Highways, Transport and Streets)	0345 045 5212
Switchboard	0345 045 5222
Trading Standards	0845 404 0506
Waste Management	0345 045 5207

Other Emergency Services

Power cuts	
UK Power Network	105
Water supply	
Cambridge Water	01223 706 050
Surface flooding	
Cambs County Council	0345 045 5200
Sewer flooding	
Anglian Water	03457 145 145
Domestic gas emergency	0800 111 999



WORBOYS GARAGE & FILLING STATION

Mill Street, Gamlingay

Serving Gamlingay since 1936



MOT TESTING STATION

Servicing and repairs on most makes of vehicles and light commercials

Tyres - Batteries - Exhausts

Tel: 01767 650 273

Book your next holiday with Kirstie

Here's why...

- She is based locally in Gamlingay, so you can meet face to face
- She has a wealth of travel experience
- She offers world wide cover, guided tours, cruises and rail journeys
- She can tailor make your ideal package or multicentre itinerary
- She can sell packaged holidays such as Jet2, Kuoni and Easyjet
- She's with you 24/7 for customer support - even when you're on holiday!
- She offers 100% financial protection
- She is professional, friendly and caring

MULTICENTRE • CRUISES • GUIDED TOURS

Why wait? Call 01767 360014 or 07815 814798 or email kirstie.timmins@travelcounsellors.com

[kirstietimmins](https://www.facebook.com/kirstietimmins)

travel counsellors

IN ASSOCIATION WITH 505 CARS GAMLINGAY
AIRPORT TRANSFERS - 01767 650505
EMAIL OFFICE@505CARS.CO.UK

Can you HELP the Community Transport Scheme?
Volunteer drivers URGENTLY needed – Contact 07519 493 701



Extensions

Loft and Garage Conversions

Kitchens and Bathrooms

Refurbishments

All aspects of Carpentry

Free no obligation quotes

07889 966 957

wilsherbuildingservices@outlook.com

Reflections

Est. 1994

Need a reliable window cleaner?

Window cleaning • Gutter cleaning
Conservatory roof cleaning

07808 064 644

Free window clean with every gutter clean

QUINCE

EST 1973
Stoneworks

MARBLE, GRANITE &
QUARTZ WORKTOPS

Templated supplied and installed onto
new units or as replacement tops.

Combining modern machinery
with traditional skills.

Tel: 01767 314180

Email: sales@qstoneworks.co.uk

All major brands of quartz supplied



STONWORKS: 3 Potton Road · Biggleswade · SG18 0DU
SHOWROOM: 83 High Street · Biggleswade · SG18 0LA

www.qstoneworks.co.uk

Gott

Plumbing & Heating

07805 650940

www.gottplumbingandheating.co.uk



High quality services at competitive prices. Contact Ed Gott for all your Plumbing and Heating needs

- ♦ Complete Bathroom Installations
- ♦ Complete Kitchen Installations
- ♦ Air Source Heat Pump Installations
- ♦ Oil Boiler Specialist
- ♦ Unvented Hot Water Cylinders
- ♦ Central Heating
- ♦ Radiators
- ♦ Plumbing
- ♦ Power Flushing
- ♦ Burst Pipes
- ♦ Taps / Outdoor Taps
- ♦ Showers
- ♦ Toilets

Email: info@gottplumbingandheating.co.uk

Experienced Emergency Plumber based locally