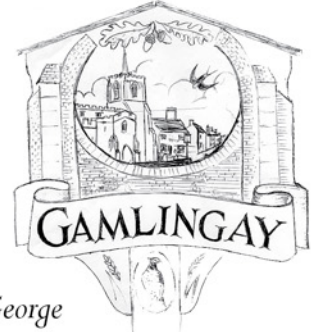


The Gazette



The Community Chronicle for Gamlingay, East Hatley and Hatley St. George

Established November 1991

March 2022

Circulation 2,007

Local Scouts head to South Korea



HELLO! Our names are George Hannah and Ethan Dummer and we live in Gamlingay. We are proud to have been selected to represent Bedfordshire in the 25th World Scout Jamboree in South Korea during the summer of 2023. You may be asking, "What is the World Scout Jamboree?". Lasting over two weeks, this is the biggest event in the world scouting calendar, with the first jamboree held in London in 1920. The jamboree takes place every four years in a different host country where 50,000 young people come together from all over the world to celebrate scouting, meet new people and experience new cultures.

Our process began in October 2021 when we submitted our applications. 136 applications were received by the Bedfordshire team leaders who then had to whittle this down to 100 Scouts and Explorers to attend the selection camp. The camp was tough with a wide range of activities that tested our skills of resilience, team building, communication and creativity. After ten hours of deliberation from the Bedfordshire unit leaders, we were overjoyed to find out we had both



been selected, along with 34 other participants, to attend the jamboree!

Why do we want to go? We have heard amazing accounts from older Scouts and Explorers about their incredible experiences and this will be our biggest scout camp to date, after attending national jamborees in Kent and Leicestershire. We will take part

in many different activities including social, physical, and mental challenges whilst gaining life-long friendships, experiencing new culture and making amazing memories.

"George and Ethan have been true Scouts since they joined the group at Cub age. Always thinking of others before themselves, they truly deserve to be part of the World Jamboree contingent in South Korea in 2023. They proved themselves during the tough selection weekend and now they need the whole village to get behind them to reach their fundraising goal. So keep an eye out for them at local events over the next 18 months."

*Will Colebrook,
Gamlingay Scout Troop Leader*

Our joint fundraising goal is £8,000, and the community has already been amazing, generously supporting our Christmas fundraising activities. We have made and sold Santa logs and spent a day bag packing at Sandy Tesco. Vanessa, the landlady of The Cock Inn, generously donated £250 on behalf of their Charitable fund and has been extremely encouraging. Look out for more events like cake sales, car washes, pudding afternoons, quiz nights and follow our progress on Facebook @Ethan D WSJ or @George's Jamboree Journey. You may also see us on the Gamlingay Facebook group.



What's Inside for March

1	Local Scouts head to South Korea
3-4	Music from Men and Machine
4	The Queen's Platinum Jubilee Event for Gamlingay
5	Christmas at Potton View News from the Connect Cafe Gamlingay Community Library
6	Hello from the Hub
8	Update: Gamlingay & Hatley Swift Project
9	The Cabin Nest 2022 Gamlingay Village Show – Save the date!
10-11	St. Mary the Virgin Church
12-13	Gamlingay Baptist Church Have a seat, courtesy of the WI Introducing the Anne Robson Helpline Cambridgeshire Hearing Help
14	Letters to the editor
15	Wildlife Trust – Spring is here!
16-17	Historyman – Gamgy Folk – Part 2
18-19	St Denis' under the skin
20-21	Local Elections – Boring but Important? Parish Council – Precept per household remains unchanged
22-27	Councillors' Column
28	22 in 2022 What can you do?
29	Gamlingay Walks 08
30	Beetroot Tart Tatin More Lions needed
31	Quiz and Puzzle Corner
32-33	What's On Diary
34-35	Village information and contact details

The
Gazette

Editorial Committee

Editor

Keith Warburton
editor@gamlingaygazette.uk

Layout Editor

Larry New
editor@gamlingaygazette.uk

Distribution Manager

Julie Newman
Call on 01767 650 685

Distribution

A large team of loyal and intrepid
volunteers that makes it all
possible

Advertising Manager

Jan Bremner
advert@gamlingaygazette.uk

Village web pages

Roderick Starksfield
gamlingay.org
Ted Bradshaw
Gamlingaygazette.uk

What's On Diary

whatson@gamlingaygazette.uk

Chair

Larry New
committee@gamlingaygazette.uk
or call on 07725 246 741

Next edition deadlines:

April Issue:

Friday, 25th February

May Issue:

Friday, 25th March

Submission of articles and images

The Gamlingay *Gazette* is an independent publication that aims to inform people living in and around Gamlingay of events of interest and is funded solely by advertising.

We welcome contributions from people, both articles and pictures.

Please note that the editor reserves the right to edit any article submitted for publication for style, length and accuracy purposes.

For photographs, when submitting an image, please state who took or owns it so that we can credit their copyright.

Every care is taken to ensure accuracy of items.

Views expressed do not necessarily represent the views of *The Gazette* Committee.

Community Transport Scheme

**Do you need HELP getting to
medical appointments?**

The Community Transport Scheme
can help you.

Call 07519 493 701

for more information

And if you would like to find out how
you can HELP others, call the same
number.

Music from Men and Machine

LOCAL music duo TWO LADS and a LAPTOP are seasoned musicians with a reputation for composing with live and digital instruments. They have spent the past year embellishing an eclectic selection of famous records. Hits such as Bill Withers' Lovely Day and Queen's Want to Break Free are included in their extensive repertoire. But they don't stop there. TWO LADS and a LAPTOP's styles range from electronic dance music and old-school rock 'n' roll to 17th century Western Classical, and beyond. The band features Mike on keys and electronics and Nick on the cello.

Christopher Lincoln interviewed talented Gamlingay resident Mike Roberts, to get some insight into the band's origin, background and experiences.

Who are you, Mike and indeed, who is the other lad?

I started my career as a café and nightclub pianist, but I'm now both a freelance composer/sound artist and a professor of music at Guildhall School of Music & Drama. I also run a Community Interest Company called 'ICMUS Inspire Community Music CIC' (who currently manage 2LAAL).

I live in Gamlingay with my wife, two children and dog. Nick Ingles is a conservatoire trained cellist and church warden at St Mary's (Gamlingay). Nick lives in Potton with his wife, daughter, and dog.

How did you meet?

We were introduced to each other by Gamlingay vicar, Rev'd Hilary, during a 'Family Fun Day' at the Eco Hub organised by St Mary's and the Baptist Church. Our first video (Three Kings) was recorded on the same spot, the outdoor stage near the Eco Hub, a year and a half later.

Where have you previously played? Any favourite venues?

Between us, we've previously played at The Barbican, The Wigmore Hall, Glastonbury Festival, Edinburgh Festival, Hills Road Concert Hall, Westminster Theatre, hundreds of hotels, bars, clubs, churches etc., (take your pick).

Favourite: the festivals – people in a chilled, relaxed context just enjoying the music with friends!

... written songs for Helen Shapiro and Joni Mitchell's muppet character, 'Wild Thing'...

Have you played with anyone we might have heard of?

Nick played under the baton of Sir Colin Davies – but we've also played with Gamlingay vicar, Hilary, who also plays cello! I've written songs for Helen Shapiro and Joni Mitchell's muppet character, 'Wild Thing'.

Any interesting experiences from your live shows?

There's a couple that stand out. When I introduced my wife to the audience by asking her to stand up – and someone completely different, and unknown to me, stood up instead (and, crucially, my wife didn't!).

Playing for Gamlingay Fireworks '21 where our fingers were cold, and the light repeatedly went from pitch black to blinding!

How would you describe your sound? Any artists you would compare yourselves to?

Multi-genre hybrid acoustic/electronic – our current repertoire includes both "Ave Maria" and Queen's "I Want to Break Free".

We might be compared with 'The Piano Guys' but we're also trying to be unique in what we do too.

But people don't 'buy' music like they used to, so making a living from it requires new strategies.

How did the pandemic impact your music career?

We formed in the 2nd lockdown over Christmas 2020 as a response to it. Having played together as a one off the previous Christmas we wondered how we could repeat it under the lockdown – this led us to the idea of creating music videos to share and it went from there.

What gave you the idea for 2LAAL?

Being able to share music performances whilst under lockdown – with the simple aim of sharing Joy through music.

Then, buoyed by the enthusiastic response (and 15,000 views), analysing what each of us could bring to the table, what interested us, how many areas seemed to converge and how we might be able to turn this into something more deliberate.

Who are your influences?

Everything! We're interested in any music that 'moves' people to have Fun, experience Joy, Peace, Love, Reflection, etc. We believe music has the power to change lives!

We want to make a positive difference in as many people's lives as possible and that means being open to all styles of music. We love the purity of acoustic cello, but also the excitement of pushing it through a distortion effect (which is where the laptop comes into its own!).

Continued on page 4



TWO LADS AND A LAPTOP

DEBUT CONCERT

Saturday 23rd April 2022
4pm & 8pm

Gamlingay Eco Hub, Stocks Lane, SG19 3JR
Advance Tickets: £8, (£5 conc)
On the door: £10, (£5 conc)
(under 16s free with accompanying adult)
available from Eco Hub (cash) or online:
www.twoladsandalaptop.com

Continued from page 3

How much of your music is original? Do you expect the proportions (self/covers) to change as you develop?

At the moment we predominantly produce original arrangements of well-known repertoire (from Baroque to EDM) but also have a few original pieces up our sleeves too and intend to add more into the mix.

we're never trying to sound like the original artists or the original rendition of a classical piece

We don't consider our arrangements to be 'covers' – because we're never trying to sound like the original artists or the original rendition of a classical piece; we've added distorted cello lines and beats to classical pieces and produced string-quartet-like versions of rock tracks.

Also, as yet, we're not including any vocals – we're purely instrumental.

Where do you see 2LAAL in the future, would you see the group expanding?

We intend 2LAAL to be a big part of our future. Expansion? Yes, absolutely, but in terms of activity and scope rather than band size. We intend to remain 'TWO LADS', but that won't stop us collaborating with guest artists (as we did with a guest dancer in our version of Yazoo's 'Only You')

In today's electro-world does it need more than one person to make music?

The electro-world opens up lots of possibilities that we're keen to explore. However, at the very core of compelling music is human communication, interaction and connection – that's why the duo aspect of what we do is so important.

It's also why you'll often see live musicians involved in DJ sets and DJs interacting with the audiences. We feel we have the best of both worlds; a duo to bring the human connection and the

laptop to open up all the possibilities we'd like to explore.

What are your plans and big milestones you'd like to achieve for this year?

To do more of what we've started by sharing inspiring music for people to enjoy. We hope to do more live events this coming year, with a mix of free community gigs, hopefully subsidised by paid gigs and grants. Our initial focus is to reschedule our postponed debut concert at the Eco Hub. We have already performed live together in a variety of community contexts this year (The Guild, Fireworks, Christmas Specials etc), but our first exclusive TLAAL concert had to be postponed due to Omicron. We did manage to release our debut CD, "Break Free", though.

If you are eager to hear their tunes, you can check out everything TWO LADS and a LAPTOP at their website: www.twoladsandalaptop.com

The Queen's Platinum Jubilee Event for Gamlingay on the 4th June 2022



A Jubilee Events Committee of volunteers has formed to organise Gamlingay's celebration of the Queen's Platinum Jubilee in conjunction with the Eco Hub who are kindly providing the venue for the evening festivities.

On the day Gamlingay Jubilee Celebrations will be split into two formats:

Afternoon Neighbourhood Parties

We are encouraging people to organise their own Neighbourhood Parties in the afternoon to take place on common green areas or any other appropriate off-road space.

We can support these parties with free event activity packs, containing things like recipes, games, a quiz and some jubilee decorations or a souvenir.

Neighbourhood volunteers are invited to represent their neighbourhood event and to work with the Jubilee Events Committee to share ideas and provide support to ensure the events become an experience to remember.

Evening Music and Food Festival at the Eco Hub

We will be organising a free entry for all event with live screening of the televised "Platinum Party at the Palace" concert on a 45 sqm LED screen, with additional live music acts on the Brogan Stage, food vendors providing a range of different cuisines, two bars and a seated dining area in the Eco Hub limited to 70 paying guests, open to all on a first come basis. Bring a blanket, chairs and tables – there's plenty of room for all.

We will be keeping everyone updated on the details as they are confirmed on our Facebook page @The Queen's Platinum Jubilee Gamlingay 2022

If you would like to volunteer as a neighbourhood representative or any of the many volunteer roles on the day then please contact:

Larry New on 07725 246 741 or email lnew@mouseman.co.uk

Christmas at Potton View

IT WAS a strange Christmas this year with many residents saying that it didn't seem like Christmas. The home was beautifully decorated by staff and residents but somehow the atmosphere of Christmas was missing.

This was at least partly due to the Covid restrictions which limited the number of visitors to the home and partly because many were unable to go out after dark to see the lights and decorations in and around the area.

A number of entertainers came to visit us and the cooks provided some good festive food.

Several of us joined the Carol Service at Hatley via zoom. Unfortunately, due to a technical problem this end we were unable to clear the mute so we could not join the discussion at the end of the service.

From that has come an idea whereby we hope to set up a regular zoom session with Rev'd. Hilary Young in the new year.

We had a raffle the proceeds of which will go towards an interactive white table for the residents. We started with just three prizes but with the generosity of relatives and friends grew to seven. We raised £129 towards our table.

In the run up to Christmas we planted nearly 600 bulbs, largely daffodils and tulips. Some of these have been planted in the ground and some are in pots and troughs. With any luck the garden should be a riot of colour in the spring.

Whilst the residents can plant the pots and troughs we cannot plant directly into the ground and for this we are very grateful for the time given by our maintenance manager and for the help of friends and relatives.

We look forward with confidence to 2022 and hope that we will be able to take part in the life of the village.

John Bennewith, Resident

News from the Connect Cafe

A CHRISTMAS High Tea was enjoyed by everyone at the Connect Cafe on Friday 3rd December, courtesy of special funding arranged by Sarah Groom, donated by The National Lottery Community Fund and IKEA UK, as part of their £1.5million pilot programme, Places Called Home.



Wonderful, tempting, savoury and sweet delicacies were all served on fine bone china, in a very happy, friendly, Christmas decorated hall at the Hub, bringing back memories of times gone by for everyone.



We have also 'pencilled in' the date of Friday 8th April for a 'Springtime High Tea', when we hope to be able to celebrate in a more relaxed atmosphere, getting together in the spirit of friendship and community which we all so enjoy at the Connect Cafe.

We are open every Friday morning between 10.30am and 12.20pm, so come along and join us and help to spread that spirit of friendship and community.

The Connect Cafe Team

Gamlingay Community Library

Tel. 01767 651 226

e-mail: gamlingaylap@yahoo.com

Supported by a team of friendly volunteers, your community library (at the Ecohub, Stocks Lane) offers a wide range of facilities, including:

- A large selection of adult fiction and non-fiction, including large print.
- Younger children's and teenage fiction and non-fiction.
- Local information.
- Access to the full Cambridgeshire catalogue of books, audio books, CDs and DVDs, by request.
- Help with accessing Cambridgeshire libraries extensive range of online services.
- Free access to ancestry websites and newspaper archives.
- Printing and photocopying facilities.
- Free internet access and wifi.
- Children's story time sessions.
- Free computer help, including help with online forms such as bus pass renewal.

Opening Hours:

Mondays

2.00pm to 4.00pm

Toddlers' story time at 2.30pm

Wednesdays

2.00pm to 4.00pm

6.00pm to 7.00pm

Free computer and digital help

Thursdays

10.00am to 12.00noon

Fridays

10.30am to 12.30pm

Saturdays

10.00am to 12.00noon



Hello from the Hub

Getting back to normal...

WITH Covid restrictions now eased and our confidence slowly growing, here's a little reminder of what you can do at the Eco Hub – from parties, to wakes, to christenings, to weddings, to business meetings, as well as attending the events and regular classes we have here, week in, week out.

As always we are very happy to discuss future bookings with you and are starting to get busy with enquiries.

So, if you have something in mind, drop us an email at manager@gamlingayecohub.org.uk.

With our opening hours starting to return to normal, you can also just drop in to use the Wifi, do some printing or photocopying, have some refreshments, view the rooms, bring your little one in to read any of the many books, borrow from the library or use the loo!

Dogs are also welcome.

Our fitness focus this month is New Age Kurling

We are delighted to be able to host this innovative game that is highly accessible, suitable for young players, elderly players, able-bodied players and disabled players.

It is a modern take on the traditional game of curling, however, can be played indoors without the use of ice.

Its main, defining feature is that it can be played from the ground, which ensures that the game is at a level playing field no matter what your age or ability, with the winner being the player who can get his stone the closest to the centre of the target after a series of rounds.

Held here, in the Ellis Maddox Hall, every Wednesday between 2.00pm and 3.00pm. £3.00 per session.

Looking ahead

We are very keen to host a Pop-up-Art Gallery at some point this summer.

So, if there are any artists, budding artists, photographers, etc., out there that would be interested in being involved in this initiative then please let us know by emailing [Vikki Jackson](mailto:vikki.jackson@gamlingayecohub.org.uk) or pop in for a chat with either me or Kate.

Keep an eye open for details on the Gamlingay Jubilee Event happening on the playing field on the 4th June.

With all very best wishes from
The Eco Hub Team

Some dates for your diary

We have some exciting events coming up this April so please come and join us if you can.

Saturday, 2nd April

Easter Fayre. 10.00am to 2.00pm
– stalls, refreshments, raffle

Friday, 8th April

The Connect Café High Tea
– 3.00pm

Sunday, 10th April

Easter egg hunt. 12noon to 2.00pm

Friday, 15th April

'Time Machine' a theatre production for all the family.
6.30pm, tickets £7.00

Saturday, 23rd April

'2 Lads and a Laptop' concert.
4.00pm and 8.00pm

the eco hub gamlingay

Friendly, social community coffee mornings at
the connect cafe
10.30-12.30 EVERY FRIDAY
at Gamlingay Eco Hub



Our Facebook page, Twitter feed and website have all the latest on What's On.

Email is the best way to get hold of us or you can leave a message on our ansaphone.

Our general manager is Kate Laugharne, supported by Vikki Jackson (marketing and business), Tony Hurst and John Berry.

www.gamlingayecohub.org.uk | phone: 01767 651 226

email: manager@gamlingayecohub.org.uk | Facebook/Twitter: Gamlingay Eco Hub

Careers with KMG Systems Ltd

KMG Systems Limited is the global leader in the design and manufacture of equipment for the biggest names in the snacks industry. We've been established on Station Road, Gamlingay for more than 40 years and have over 150 employees. The business grows every year and we are currently recruiting for many skilled and unskilled roles including:

- > Fabricator Welder
- > Laser Operator/Nester
- > Press Programmer/Operator
- > Fork lift driver
- > Sales Engineer
- > Mechanical Engineer
- > Design Engineer
- > Project Engineer

We have other vacancies. Use the **Solution Gamlingay** app or visit www.kmgsystems.com to see the most current vacancies and more information.

Apply by email to recruitment@kmgsystems.com

We see apprenticeships as an investment in our future and we are actively recruiting for apprentices.



UPDATE

Gamlingay & Hatley Swift Project



OVER the last year we've distributed and installed nearly 20 swift nest boxes in the village and towards the end of the summer we even saw swifts investigating them so, fingers crossed, they will return this year and breed.

It's a long game though. Much like us, swifts take time to investigate new homes before moving in, so it may take a few years before the boxes are full. This means it's best to start now before it's too late!

Why are nest boxes so important?

Swifts love to nest in cracks and crevices in old houses. The cracks they call home are now much less numerous than they used to be, as we tidy up our homes, and new houses just don't have them at all. This means swifts are losing out on the places they used to nest in, so by installing a swift box we're giving swifts a safe home to raise

Top Left: We also ringed 13 adult swifts this summer and re-caught seven more. One had been originally ringed as a chick at the same site in 2018. As well as these, we ringed several chicks. By ringing these birds we can keep an eye on population numbers, see how long these birds live and get an idea if they return to the same nest site every year.

Top Right: Boxes installed on houses in Gamlingay – hopefully soon to be full of young swifts!

their chicks in. Simple really!

Last year came the disappointing news that swifts have joined the species of highest conservation concern, due to their rapid decline. The good news is though, we can reverse this and putting up nest boxes in the village is a small way Gamlingay can help reverse this awful decline.

What's next and how you can help...

Thanks to generous funding from the Tithe Fund, we will shortly take delivery for another 40 nest boxes! So if you'd love to give a swift a home on your house, please get in contact, using the details at the end. The boxes are free to residents of Gamlingay and Hatley. Swifts like to breed in colonies, so we'll look to put at least two boxes on your property.

There's no need to worry about mess – swifts are very clean birds and you will barely notice them at all.

Even if you don't have room for a swift nest box, there are other things you can do to help these declining birds. Swifts eat insects – you won't see them on your bird feeder – so growing plants that insects love, or leaving part of your garden to go wild helps insects, which gives the swifts something to eat. It's likely that loss of food is another reason for their decline, so if we can put boxes up and improve the food supply we can hopefully start to reverse this decline.

Contact us for your free swift nest box

If you'd like to give a swift a home this year, let us know and we can provide you with a free swift nest box, joining the others in Gamlingay who already have boxes installed. We hope to hear from you soon!

Contact: Kevin Middleton:
kevinmiddleton@hotmail.co.uk or
Mark Fitzpatrick:
Mark.x.fitzpatrick@gmail.com.

Muck and Magic

Gamlingay and District
Garden Club

Eco Hub, Stocks Lane,
Gamlingay.

Tuesday, 1st March at 7.30pm.

Charles and Jo Mears of Wood Farm in Waresley will be presenting "Muck and Magic" at the Garden Club meeting in March.

At Wood Farm they are passionate about their free range hens and the delicious eggs they produce. They have recently installed an anaerobic digester plant. The manure produced is a valuable source of natural fertiliser sold under the brand name of Full Circle. Their aim is to keep the carbon footprint at an all time low.

In the spring, members of the Garden Club will be invited for a tour of the farm.

All Green Landscapes

Mark is an award winning, fully qualified horticulturist with over 25 years' experience in landscaping.

We can provide:

- Patios & Decking
- Fencing
- Planting & Pruning
- Paving & Driveways
- Turf laying or seeding
- Full Liability Insurance
- Fully Guaranteed



For advice or a FREE quotation call Mark
01767 651126 or **07850397317**

17 Plane Tree Close, Gamlingay
www.allgreenlandscapes.co.uk

The Cabin Nest



THE Cam Academy Trust provides education for pupils with autism across four of its schools in its Cabin provision. Gamlingay Village Primary has the only primary phase Cabin, known as the Cabin Nest, and the Trust's vision is for it to be a centre of excellence for the education of primary aged pupils with autism.

Staff in the Cabin Nest support pupils to settle into school routines and give them the individual help and support they need to thrive. Children are encouraged to develop their independence and there is a high focus on reading, writing, communication and number skills. They are supported in mainstream lessons by a teaching assistant, as well as in small groups or individually in the Cabin Nest provision.

All staff at GVP took part in the Autism Education Trust's 'Good Autism Practice' to develop their knowledge and understanding of autism and how we can best meet the needs of each individual. Cabin Nest staff have regular training to support the needs of the pupils that they are assisting and they work closely with outside agencies and specialists such as art therapists and speech and language therapists.

The Cabin Nest has been on site at GVP since September 2020, but it quickly became apparent that current rooms were inadequate for their needs and alternative accommodation was needed.

During the last week of the autumn term there was lots of excitement as we saw our new Cabin Nest building delivered onto the KS2 playground and be craned into place. Construction is well underway, and they hope to move in by the end of January.

There will be a quiet, sensory space for calm time, and smaller study rooms to help minimise distractions.

As a school we are really proud of this provision and the benefits that it brings to the whole school community.

Beth Slater



2022 Gamlingay Village Show



SAVE THE DATE!

FOLLOWING the success of our much-needed 2021 Village Show, we have set the date for this year as Saturday 17th September, by kind permission of Gamlingay Primary School, so please put it in your diaries.

Following feedback from last year we are currently reviewing the show content and will share more details in the coming months. The show is about promoting and supporting local businesses and community groups. Details of how to apply for a stall or space in the food court will follow.

A great deal of work goes into running the show, so if you are interested in joining our committee, then please do contact me or one of the other committee members to express your interest. It is great fun to be involved in and we welcome anyone, irrespective of how much time you feel you can dedicate ... the more the merrier.

The current Committee is as follows, and we are very pleased to welcome Myra and Diane as new members:

Chair: Jayne Dawkins
Vice Chair: Steve Palmer
Treasurer: Victoria Critchlow
Secretary: Peter Condon
Committee Members:
Ken Burgin, Myra Brunton and Diane Reynolds

Finally, we would like to thank Ginny Jones for her dedication and hard work as Chairman last year and wish you all the best in your move. Your input, enthusiasm and sense of humour will be sorely missed.

Jayne Dawkins 0771 324 7973
gamlingayshow@hotmail.com



News from the Churches

Parish Church of St. Mary the Virgin

Rector: Hilary Young	Rectory, 3a Stocks Lane	650 587
Churchwarden: Nick Ingles	9 Yew Tree Close, Potton	07828 934 003
Reader/Churchwarden: Chris Miller	11 Bunyan Close	650 779
Parish Administrator:	gamlingaychurch@outlook.com	

St. Mary's Letter for March

Dear Friends,

BEFORE Christmas, for the first *Gazette* of 2022, I wrote about Faith and Hope, and those remain themes as we progress past New Year. December and January brought joys and sorrows. Christmas with the Omicron variant causing concerns, the service was a strange one. Perhaps the highlight for me was a much sparser Christingle Service than usual in Gamlingay, and one family in Everton. These were on Christmas Eve as usual, rather damp, at Everton Church and then at the EcoHub (no procession in Church Street due to illness and concerns for safety). Although there was so much that didn't happen, what did was a delight. Special thanks to Woodview Farm Shop for donations of oranges, and to the people who helped make them into Christingle and kits. But most of all, thank you to people who came and made a celebration of Christ's birth with the children. The joy of that event, including gratitude expressed by people for it taking place, coupled with the pleasure I had in sharing in Christingle celebrations at Gamlingay school, was an antidote to the disappointment of what wasn't possible.

All this reminded me once more that it is far more what we think about things than what actually happens that matters, or as Shakespeare puts in Hamlet Act 2 scene 2 'Nothing either good or bad, but thinking makes it so'. As the hymn says:

God be in my head, and in my understanding

God be in my eyes and in my looking

God be in my mouth and in my speaking

God be in my heart, and in my thinking

God be at my end, and at my departing.

In the face of set-backs and disappointments I am learning afresh to keep looking and asking for the perspective of the Almighty on events. It is indeed important to have celebrations, to find the joy in small things as well as great ones. It also gives pause for thought: what, of what we 'used to do' is good, what needs to be left behind, and what needs to be grown on?

Ely Diocese, of which all the churches of the Benefice are part, has been asking parishes to think exactly

this, and this year's Lent course addresses that by looking at 'Baggage and Treasures'. That course is not just for Lent, though, and we are likely to pick it up after Easter, as our Benefice Lent preparations for Easter will be looking at themes of Faith, Hope and Redemption using the film 'The Greatest Showman'. There will be details on how we will be doing this in church Newsletters and on Social Media. If you are interested in this course, please get in touch.

Although Spring has not yet sprung, and indeed as I write we should be in midwinter, yet the days are lengthening (as they do year on year). This year there are definite signs of Spring already at the end of January – snowdrops already visible, birds showing signs of nesting. With these pointers towards global warming, it is good to be part of our village in Gamlingay looking to what we can actually do ourselves about climate change. I am proud our church is part of the Climate Action Group – watch for more details on our Platinum Jubilee project in the churchyard as we work in partnership with the Council and wider Community on making



THE GAMLINGAY

FOOD PROJECT

HOME OF
COMMUNITY FRIDGE



CONTACT
ADMIN@GAMLINGAYFOODPROJECT.ORG
07307 349525

BROUGHT TO YOU BY
ST MARY THE VIRGIN CHURCH
AND GAMLINGAY BAPTIST CHURCH

IN PARTNERSHIP WITH
CAMBRIDGE SUSTAINABLE FOOD




ST MARY'S CHURCH HALL The Emplins, Gamlingay



Now available on Saturday mornings
Ideal for dancing classes, children's clubs etc.

£10 per hour
Please contact: Lindy Gorton
Tel: 01767 - 650 581

this green space in the village the best it can be, including managing the diseased beech tree.

Work on St Mary's in Gamlingay will, we hope, be completed around Easter. Chris Smith is preparing a report and thanks for next *Gazette* – with the many contributors we are so grateful to, when we can return to the building. I add my personal deep gratitude here to all those who have helped to win grants as well as those who have provided donations, more names next time, but Chris himself and Alec Hissett.

Love from Hilary

February

Sunday 27th

Next before Lent
(*Quinquagesima*)

Church Annual Meetings planned for this date – details in the Newsletter and social media.

March

Tuesday 1st

Shrove Tuesday – Event TBC

Wednesday 2nd

Ash Wednesday
Services including 'Ashing' as a sign of penitence, details TBC

Sunday 6th

First Sunday of Lent
10.30am Communion at
Everton
6.00pm Guest Evensong at
Clare College Chapel (booking
required)

Sunday 13th

Second Sunday of Lent
Details TBC

Sunday 20th

Third Sunday of Lent
Details TBC

Sunday 27th

Fourth Sunday of Lent
Mothering Sunday – celebrations
at the Eco Hub, details TBC



G & H Seamer

Funeral Directors - Est.1903

Family owned and independent Funeral Directors providing sensitive, dignified care for your loved ones. We provide a 24 hour service, home visits at the request of the family and private Chapel of Rest.

Pre-paid Funeral Plan available

Tel: 01767 680519

www.ghseamer.co.uk
office@ghseamer.co.uk

47 High Street, Sandy, Beds SG19



P H Plumbing & Heating Services

Aqualisa Shower Specialists

Specialists in Bathroom Suites
Small leaks, showers
Taps, Cylinders
Gutter clean-outs
Blocked drains & sinks
24 Hour emergency callout

Find us at Yell.com

07855 902358



Volunteer drivers URGENTLY needed
Call the Community Transport Scheme on 07519 493 701

DSSelectrical

Residential and Commercial Electrical Installations since 2009

Office: 0800 019 7992

Email: info@dssselectrical.co.uk

Web: www.dssselectrical.co.uk

Be sure to check out our reviews on Google - Search DSS Electrical



Reflections

Est. 1994

Need a reliable window cleaner?

Window cleaning • Gutter cleaning
Conservatory roof cleaning

 07808 064 644

Free window clean with every gutter clean



News from the Churches

Gamlingay Baptist Church

Stocks Lane, Gamlingay, Sandy SG19 3JR

Lead Pastor: Reverend Adrian Semerene adrian@gbchurch.org.uk 07472 350 860

Church Secretary: Mike Roberts on 651 179 Church Office: 651 519

Message for March

THERE are many words that may come to mind when describing me: loud, tall, Christian, funny, caring, annoying (I'm sure some of you are thinking it). However, angry is not a word many would associate with me. This is a fact I am grateful for. I mean, let's be honest, who wants to be known as the angry person... the hothead... the one always flying off the handle... the one always looking and sounding miserable! I know I don't!

However, there are definitely times in which I find myself *angry*! And please don't give me more credit than I am due, it is not always *righteous anger*, rather quite pathetic and unnecessary anger. Have you ever experienced that? Have you ever been angry because of something someone has done or said... or perhaps not done or not said. It is so easy to let anger seep into your life... I say this from a place of experience. I've recently come to the realisation that I've allowed anger to take place in my heart. Now, please don't misunderstand me, *I am not riddled with anger!* However, I've allowed things that never would have

“Hot heads and cold hearts never solved anything.”

— *Billy Graham*

caused anger, to build up, to take root. Fortunately, they are small roots, and easier to remove at this stage... but I have to take stock and realise that it's there, and take steps to ensure it doesn't happen again.

You might be reading this, thinking, 'that sounds a bit dramatic Adrian.' However, the truth is, that small hold it had on me, was having an effect on my family, my friendships, my sleep, my *every day*. This situation, has led me to open my eyes further to the world around me to see, that anger is all around us at the moment. There's anger towards politicians; towards regulations; anger towards those who look and act differently than us; anger towards those who hold differing views than us; anger towards Covid, illness and death in general. Anger is *really* present everywhere and I think we need to recognise it and address it.

In the Bible we read:

My dear brothers and sisters, take note of this: Everyone should be quick

to listen, slow to speak and slow to become angry, because human anger does not produce the righteousness that God desires. (James 1:19-20).

Whether you believe in God or not, I'd imagine you can see the wisdom in being quick to listen and slow to speak and anger. Truth is, that is hard, and requires us to keep our hearts soft as well. A good friend of mine recently said to me, that to keep my heart soft and be slow to anger, we have to 'choose to not be offended'. This little phrase is one that has transformed my interactions and has begun to uproot that undesired and unnecessary anger. I wonder if it might be of use and encouragement to you as well?

PLEASE read this article as it is intended. Not as a piece of judgement, or even from a person who has it all figured out. Rather, from a person, journeying through life, looking to live a life reflective of who I am called to be. Know, if you ever want or need to chat (or pray) about anything that might be taking root in your heart, I am up for journeying that together. I never promise answers rather someone to journey alongside with. Don't let anger, or any other unhealthy emotion or addiction stop you from being who you are called to be.

I'm always around, up for a chat, and you are of course always welcome at the Backroom Café or to our Sunday Services. Don't be a stranger, we'd love to see you around soon.

Many blessings,

Rev Adrian Semerene

Lead Pastor: Gamlingay Baptist Church
adrian@gbchurch.org.uk | 07472 350860

Twitter: @asemerene

Instagram: @asemerene

The Backroom Cafe

Every Monday
9:30am - 3:00pm

Every Third Sunday
10:00am - 4:00pm

Gamlingay Baptist Church

Tea, Coffee, Cakes, & Wi-Fi
All free!

For more information contact
office@gbchurch.org.uk

GAMLINGAY NEED HUB
THE PROJECT
EVERYONE HAS THE RIGHT TO FOOD.

YOU CAN PARTNER WITH US TO PROVIDE REGULAR FOOD PARCELS TO THOSE IN NEED LOCALLY.

LOCATED AT THE ALMSHOUSE CHAPEL, 62 CHURCH STREET

CONTACT
ADMIN@GAMLINGAYFOODPROJECT.ORG
07307 349525

BROUGHT TO YOU BY
ST MARY THE VIRGIN CHURCH AND GAMLINGAY BAPTIST CHURCH

IN PARTNERSHIP WITH
CAMBRIDGE SUSTAINABLE FOOD

GBC Diary March 2022

The congregation is still advised to wear face coverings when in the church.

Please do check our website or contact the office for updates.

Sunday Services

Communion is held on the first Sunday of the month.

Hymnal Praise at 10:00am

Worship Service at 10:45am

Services live-streamed on www.gbchurch.org.uk/latest-talks

GBC Kids & Youth Groups

Meet every Sunday at 10:45am for age-appropriate activities.

Third Sundays each month will be different!

The Backroom Café will open 10.00am to 4.00pm.

The regular worship services are not held.

Check weekly news, website or contact office for timings and details.

Small Groups

Meet every week. Get in touch with office@gbchurch.org.uk for more information.

The Backroom Café

Open every Monday, 9:30am to 3:00pm.

Meet with friends, have a chat and enjoy good coffee and cake.

Ladies' Brunch

Second Saturday, 12th March, 9.30am to 11.00am.

A time for conversation, study and prayer.

For more details please contact the office on **01767 651 519** or email: office@gbchurch.org.uk

Please consider following us on social media to keep updated with all our events:

[Facebook.com/](https://www.facebook.com/GamlingayBaptistChurch)

[GamlingayBaptistChurch](https://www.facebook.com/GamlingayBaptistChurch)

[Instagram: @gb_church](https://www.instagram.com/gb_church)

[Twitter: @gb_church](https://www.twitter.com/gb_church)

Have a seat, courtesy of the WI



IN January a bench celebrating the WI in Gamlingay was installed in the meadows. The WI says: "We hope Gamlingay residents will enjoy resting on it and will realise that the WI has been in Gamlingay for 100 years."

Details of the WI programme plus contact details are in *The Gazette's* Village Information section.

CAMBRIDGESHIRE HEARING HELP

CHANGED DETAILS

CHH will be running a centre in Gamlingay Baptist Church on the third Wednesday of each month throughout 2022.

Further details from:

enquiries@cambridgeshirehearinghelp.org.uk

or phone: **01223 416 141**



**GAMLINGAY
COMMUNITY
FRIDGE**

OPEN MONDAY - FRIDAY
10 AM - 12 PM

- HELP REDUCE FOOD WASTE!
- SHARE FOOD YOU'VE GROWN!
- ALL FOR FREE!



LOCATED AT THE ALMSHOUSE
CHAPEL, 62 CHURCH STREET

**THE GAMLINGAY
FOOD PROJECT** CONTACT
ADMIN@GAMLINGAYFOODPROJECT.ORG
07307 349525

BROUGHT TO YOU BY **IN PARTNERSHIP WITH**
ST MARY THE VIRGIN CHURCH AND GAMLINGAY BAPTIST CHURCH CAMBRIDGE SUSTAINABLE FOOD



time to
Talk
FREE NATIONAL
HELPLINE
0808 801 0688
AnneRobson
Trust

Introducing the Anne Robson Helpline

If you or someone close
to you is dying
... you can talk to us.

At the Anne Robson Trust we aim to be there to listen to anyone who is struggling with the imminent death of someone they care about.

We know that facing the end of life can leave you isolated and alone.

Calls are free and confidential.


Call us on
0808 801 0688

Being able to access support whilst a loved one is dying is really important for a number of reasons.

Gaining knowledge of what may happen towards the end and having a sense of 'preparedness' helps both the person dying and their family gain as much control as possible.

Please visit:

[www.annerobsontrust.org.uk/
helpline-service](http://www.annerobsontrust.org.uk/helpline-service)
to find out more.



Wendy Hall
WMSCh, MPSPract, DipCTec
www.hpcp-uk.org

Chiropodist/Podiatrist

Moor Farm Cottage, Potton Road,
Abbotsley, St Neots, Cambridgeshire,
PE19 6TY

Telephone 01767 677 554
Mobile 07926 355 884

For all kinds of foot problems:
corns, callus, bunions, nail trims
all in the comfort of your own home
or at my surgery.

Letters to the editor

Re: Gamlingay Medical Centre

I READ with considerable interest Christopher Lincoln's interview with Dr von Blumenthal. Whilst I applaud the objective of the health centre of maintaining a working medical service for the community I must put the other side of the picture, that of the patient. I have to be careful here not to undermine the good work being done by the practice, nor must I let a current complaint colour my concerns.

I start by asking a question "Is it right that an elderly man who has been triple vaccinated against Covid and had a flu jab, be sent to A&E for a throat infection rather than the GP call to see him first?" Quite apart from the cost of a Paramedic Ambulance, the cost of attending A&E with the exposure to all sorts of infections, the unnecessary wear and tear on him and a special car to bring him home, he came back from hospital with the same drugs he has been previously prescribed without [previously requiring] a visit to A&E. Perhaps the refusal by the Medical Centre to answer this sort of visit request needs to be reconsidered. Potton View is a Care Home for those who are 65+ and is situated a few hundred yards off the Potton Road which the doctors must use to travel between their two surgeries. As I mentioned before we are all fully vaccinated and have seen restricted visiting over the pandemic. All staff are tested three times per week and

residents are tested at least once a month. This must be one of the safer environments for the doctors to visit. I think it fair to say that we are a group of vulnerable people who are aware of the current pressures on the NHS but who are now suffering from an inability to see a GP. Even a telephone call is difficult for some people of that age and it is just about impossible to see a doctor or a pharmacist or other professional medical person. Will the doctors please consider our needs as well as their own.

I am aware of other concerns in the village but about which I cannot comment because they are hearsay. The specific points made above are ones of which I am personally aware. The main point to make is that the community doesn't always see things the way Dr von Blumenthal sees them. Please Doctor, try also to see things from the point of view of your patients as well as your staff.

Yours faithfully

John Bennewith, Resident, Potton View

Comment: The Gazette has not approached the surgery for a response as, from experience, we feel it unlikely for them to have the capacity to reply. However, judging from reports in the national news this sort of story is not uncommon at the moment. Vaccination does not guarantee 100% immunity, and the elderly and infirm are at increased risk whether vaccinated or not. If GPs were conducting house calls, or indeed seeing Covid patients in surgery, the potential to spread infection must, logically, be increased. How would any of us feel if

a doctor's visit did actually cause a death? It is perhaps understandable that any illness seeming to have similar symptoms to Covid should be referred to A&E, but where is there least risk to patients and staff: having a patient go to hospital with all the human interactions John Bennewith highlights, or having them seen in either the Health Centre or through a house call? Perhaps above anything else this letter highlights the difficulty of implementing a systemised triage-type approach, the burden of which seems to fall on the shoulders of staff who are not medically qualified and which apparently leaves little margin for what some would call common sense. Knowing that we are not alone in Gamlingay in experiencing these sorts of problems doesn't really help. Ed.

Re: Nextdoor

I recently received a letter, apparently from one of my neighbours in Cinques Road, inviting me to download a free programme, "Nextdoor", to find out what's going on in Gamlingay. It was single page in large type, the sort you might get put through the door when someone locally has a service to offer. Someone had a great idea that will enhance further the community spirit in our village. Apparently there are over 800 posts already.

But something wasn't right.

Why was someone from Cinques Road sending invitations in the post?

The envelope was pre-printed – not what I would have expected from mail sent from our Post Office. Why did I have only seven days to respond?

A quick search on the internet reveals all. Someone in the USA was also suspicious of her invitation, showing an image of the letter she received, which was almost identical to the one I received: same layout and typeface. Only the details were different (and the American spelling) – there were over 800 posts on that one too!

I have no axe to grind. I just think it's important to be aware of the reality of a multi-million international company (Nextdoor has a *Wikipedia* entry) trying to give the impression of being local for locals. If only there was an app for me to share my concerns with my neighbours!

Bryan Tregunna

SCOTT ROOFING LTD

Roofing Specialist

Your local traditional Roofer

Free quotations and advice

All roofing works undertaken:

tiling - slating - felt flat roofs - repairs - chimney re-pointing -
insulation - fascias/gutters - moss removal - new roofs - lead work

Call Scott:

Mob 07834 777 134

Tel 01767 651 626

Proudly serving the village for over 15 years



**Bedfordshire
Cambridgeshire
Northamptonshire**

Spring is here!

IN hedgerows and scrub areas blackthorn is flowering and hawthorn and elder leaves are out. Hawthorn and blackthorn are very common hedgerow bushes that are great for wildlife. They can look quite similar over winter, but chances are if you are seeing a swathe of white in a hedgerow in March it is blackthorn, and a mass of green is probably hawthorn. Blackthorn flowers before it has leaves, and hawthorn always after. Elm is a common tree in our area which can be seen in March with pinkish flowers appearing in clusters.

Before the summer migrants arrive in April, you can hear our resident birds like blackbirds, chaffinches and yellowhammers singing their territorial songs, and great spotted woodpeckers drumming.



Elm flowers, courtesy of Rebecca Neal.

In our woodland reserves in the West Cambs Hundreds you will see ancient woodland indicator plants like bluebell and dog's mercury leaves coming up, and primrose, oxlip, and violet in flower. Many woodland flowers complete their lifecycle early, before they are shaded by tree leaves. Look out for frogs in the ditches in Gamlingay Wood as they spawn in March.



Dog's mercury, courtesy of Rebecca Neal.

It is still muddy, so please take wellies, and stick to the middle of paths to avoid trampling plants and compacting soil on the edges.

You can keep up-to-date about reserves with restricted access on our website: www.wildlifebcn.org/explore/reserve-updates

Throughout the year, The Wildlife Trust for Beds, Cambs and Northants deliver guided walks and family sessions to help you learn more about local wildlife and how you can help look after these special reserves.

Please get in touch if you are looking for a speaker for your community group, would like to invite us to attend an event, or have an idea for a wildlife-related activity.

<https://www.wildlifebcn.org/events>
You can contact me on
E-mail: rebecca.neal@wildlifebcn.org
Facebook: @BeccaBadgerWTBCN
BCN Facebook/Twitter: @wildlifebcn
Visit: www.wildlifebcn.org

The West Cambridgeshire Hundreds is a group of nature reserves owned and/or managed by the Wildlife Trust for Beds Cambs and Northants: Hardwick, Gamlingay, Hayley, and Waresley and Gransden Woods, Buff Wood, plus Cambourne Nature Reserve.

Need to lose lockdown weight?

Based in Gamlingay I offer 1:1 virtual support to get

AMAZINGLY QUICK RESULTS

including:

- > Products to suit everybody
- > Free delivery/collection
- > Visible results to keep you motivated

For more information contact Lynne on:

Mobile: 07890 068 644

Home: 01767 448 552

lynnestukins.cwp@gmail.com

www.one2onediet.com/LynneS

THE 1:1 DIET
by Cambridge Weight Plan

CAN YOU HELP?

More drivers required
Community Transport Scheme
Volunteers call 07519 493 701

Lewis Wooding

Internal & External
Decorating Services

Personal references available

Competitive estimates
Detailed quotations

Phone 01767 651647

Mobile 07889 966557



Extensions

Loft and Garage Conversions

Kitchens and Bathrooms

Refurbishments

All aspects of Carpentry

Free no obligation quotes

07889 966 957

wilsherbuildingservices@outlook.com



Historyman

by Nick Bruce

Gamgy Folk – Part 2

THE village of Gamlingay wouldn't be the same without the people who shaped it – the people who live, work and visit Gamlingay; Gamgy Folk.

These pictures of Gamlingay people are a follow-up from those in the last issue of *The Gazette*, showing the many different walks of life in our village. In this part we look at more of the Belle Vue brick pits, the coming of the Village College and villagers at fun time.



Pic 1: Workers at the Belle Vue brick pits 1907. The brick pits closed some years later and were flooded to make a big lake that was popular with children and adults for swimming. Later it was used as a fish farm. During the second world war some of the buildings were used as an ammunition dump. The Foreman in the Bowler hat is the Great Grandfather of ex-Gamlingay resident Gary Carter.



Pic 2: August 1934. The man in the middle is William Norman who regained his sight after being blind for seven years. They are standing outside Whitehall Farm on the Crossroads.



Pic 3: Village characters Teggy Daisley and Driller Saunders complete with horses and carts and dog on Heath Road looking towards the Iron Church in the early 1920s.



Pic 4: Jim Titmus with his horse Poll and Brumagem [sic] cart in Park Plantation off Drove Road, The Heath during World War 1. Along for the ride were George Ellis, Sam Gilbert, Mr Arnold, Tom Jakes, George Gilbert with the other two unknown.



Pic 5: With the coming of the Village College to take the second tier pupils until they left school meant a full-time caretaker. The first person to get this job was Cyril Kettle who lived across the road from the college, but with the job came a brand new bungalow. In those days one job for the caretaker was to cut the grass of the football and cricket pitches and roll after. Here we see Cyril on a Massey Ferguson tractor and gang cutter at the front of the college.

For more information on any pictures in the Historyman and if you have any pictures to lend for copying please contact Nick on 07925 119 346 or email nb777@btinternet.com

For any pictures borrowed a free copy or enlargement will go to the owners.



Pic 6: Two of Gamlingay's real family men who lived all their lives and brought up their families in the village. This portrait was taken at a photographer's studio in St. Neots while the Jakes brothers were on leave during WW2. Les (Bozzer) Jakes of the Merchant Navy on the left and Eric Jakes of the Army Forces on the right.



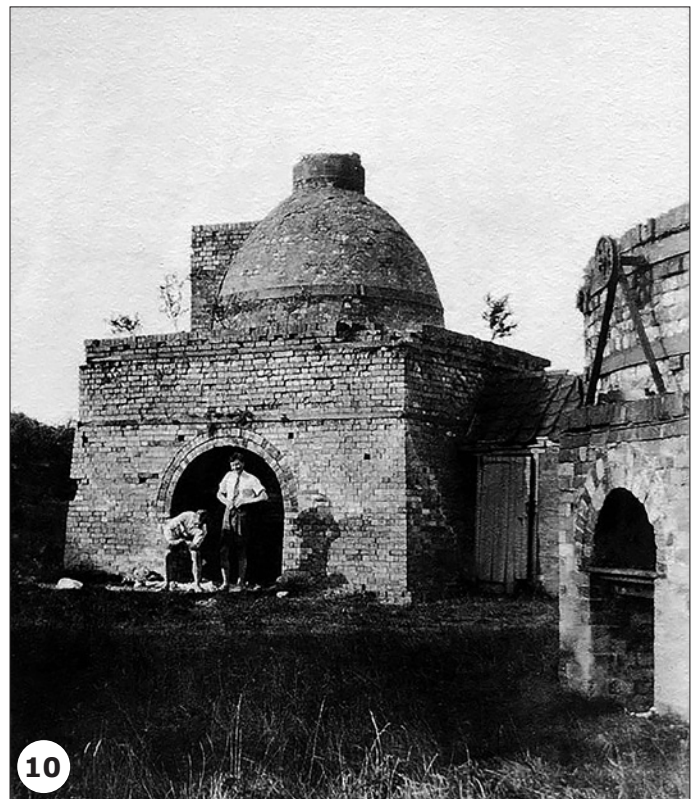
Pic 7: The Womens Institute Fancy Dress Fete at Merton Grange 16th June 1932 with J Jarvis and J Rainsford looking really happy.



Pic 8: Gwen Sharpe on a night out with Gamlingay Photographic Society at RAF Alconbury in the early 1970's trying a jet plane for size. Gwen farmed Low Farm on Waresley Road with her family for many years before she retired and moved to School Close. Retirement was busy for Gwen because once the Village College opened for evening classes she would go to a class every night of the week including the Photographic Society on a Friday, then Local History, Lace Making, woodwork and others.



Pic 9: Eileen and Maurice Knibbs outside St Marys Church at a wedding. Together with Maurice's father, Eileen and Maurice's son Colin and his wife Daphne and their son Julian ran the Knibbs family butchers shop in Church Street for over 100 years and employed many local people over the years.



Pic 10: The place to be in Gamlingay from the 1920s until the 1960's for children and families who liked the water, Belle Vue brick pits after they were flooded. There was swimming and boating and rope swings over the water. Here we see Tony and Phillip Ellis changing in one of the old brick kilns before they were demolished in the 1960s.

St Denis' under the skin

Catching up on the East Hatley church restoration project

By Peter Mann



St Denis, East Hatley dates back to at least 1217, and may well be much older.

THE Friends of Friendless Churches (FoFC), which owns St Denis', has been given a second government grant to help with repairs to the interior of the building.

The grant is being spent on the replastering of the walls in the nave – what plaster remains is very fragile and crumbly; other remedial work will include repairing the reredos, the tiling around the sanctuary step and the east window surround in the chancel, as well as minor roof repairs to resolve intermittent leaks and localised treatment of timber decay in the roof. Planning permission has been granted for the works.

A sorry state

The church, Grade II* listed, was closed for services in 1959, left empty and to rot until a major restoration project between 2003 and 2006. A major grant from English Heritage enabled the church to be re-roofed and the walls to be repaired; St Denis' was then a safe shell, albeit without windows or a floor.

When the FoFC were given the building (but not the graveyard, which remains consecrated) in November 2016 by South Cambridgeshire District Council, its owners at the time, they immediately put restoration work in hand – a new floor and windows in

the nave in 2018 and new windows in the chancel in 2021 (see September's *Gazette*), the latter paid for by the first tranche of the government's Culture Recovery Fund.

That still left the problem of the 150 year old plaster in the nave, which has been steadily crumbling away for well over 20 years – hence the church only being open on special occasions or by request.

It may have remained that way had not the FoFC been successful (after initially being turned down) in obtaining a new grant from the Culture Recovery Fund late last year.



The walls of St Denis were made from field stones, the size of cobbles, in the 12th century. Those in the nave are still in fine condition.

A lot of stones

Like many village churches, back in the day it was constructed with whatever material was available locally – in the case of St Denis', field stones the size of cobbles.

Imagine life around 800 years ago: no electricity, internet, gas, running water, flushable loos or JCBs. Only the super-rich would live in anything like a permanent dwelling – everyone else in little more than mud hovels.

Imagine, too, someone suggesting a village amenity – or church – would be rather nice. "Okay," said the Lord of the Manor, "go forth and collect all the stones in the fields and let's see what we can do."

Thousands of stones would be required for even a simple, modest building, so imagine, again, the effort required to bring them to the chosen site through Hatley's mud when a wheelbarrow was a luxury item.

Have you ever tried to build anything with stones? Being irregular shapes, it's not easy – so how did they make a whole building?

Essentially by using planks of wood to make a large, rectangular box in sections the length, width and depth of the building and three or four feet high, filling the boxes with cobbles and a lime putty mortar to hold the cobbles together. As the boxes were filled, more planks were added, held by poles, until the walls reached the desired height.

It was high-tech stuff in its day and would have taken a long time to construct while the lime mortar in each layer was allowed to harden.

Solid walls

The builders obviously did a good job on St Denis', for despite 800 years (and, perhaps much longer) of continual heave of the clay on which the church stands, knocking in holes for doorways and windows, extending, re-roofing, restoration and, in 1874, adding heading, the basic structure is still sound.

Until 1874, when William Butterfield, a go-to architect of the day, did a major restoration on behalf of



State of play in St Denis' at the end of January – much scaffolding and much work to be done to remove the old plaster (now in the plastic bags) and re-plaster the walls with a traditional lime putty mortar.

Downing College, then owners of East Hatley, the interior walls were probably finished with a thin lime plaster to infill bulges between the cobbles and quite possibly painted. Such 'crudeness' would have been out of fashion when even workers' cottages would have plastered walls, so St Denis' was likewise upgraded, but whereas the cobbles are still in fine condition, the lime plaster used by Butterfield's builder has not stood the test of time.

There is plenty of evidence to show the builders cut quality – perhaps under instruction from either Butterfield or his client once things started to go over budget (they hadn't reckoned on an entirely new roof): the then new chancel arch built of layers of Bath stone and local clunch is another area the FoFC is restoring, for the clunch is flaking away.

Lodge and Sons, who are doing the current restoration work, cut back a corner of the clunch to reveal the Bath stone is only a couple of inches



The far from solid Bath stone columns making up the chancel arch – the layers of flaking clunch are to be replaced.

thick – so merely a facing backed with rubble; as the clunch is removed, each layer of bath stone will have to be supported as the replacement stone is slotted in.

Why bother?

If you believe in the value of our built heritage, that the skill, time and effort which has gone into creating structures which are now hundreds of years old is worth preserving because of the skill, time and effort invested, and the story they tell about our forebears, then this surely sums up a civilised society.

We are, with St Denis', very fortunate the FoFC is dedicated to the rescue, preservation and use of churches – there are nearly sixty in its portfolio.

Another point worth making is for heritage organisations like the FoFC, for whom grants had all but disappeared, the Culture Recovery Fund has been a lifeline which has enabled them to carry out repairs which might otherwise have taken years to fund. St Mary's in Gamlingay and St Giles' in Tadlow (which recently came into the care of the FoFC) are other local beneficiaries of the Fund – as has been the safeguarding of the jobs of the highly skilled craftsmen and women without whom there would be no built heritage.

And when the work is finished, hopefully in the next few weeks, it will mean St Denis' can be open every day (8.30am to dusk) for anyone to look round, for quiet contemplation and (at some point) for events.

Keep an eye open for the good news! www.hatley.info/hatleys-churches/st-denis-east-hatley

Hatley Village Hall

Available for hire every day
8.30am to midnight

A clean, pleasant and roomy hall - can seat 85, with good acoustics
One user per session; new kitchen and boiler
Ideal for meetings and parties
Large car park

£11.00 per hour (£8.50 Hatley residents)
To book, please contact Kim Wilde on 01767 650 596 www.hatley.info



LIBERTY

Conservatories, summerhouses, doors, windows and all related repairs. Quality PVCu and aluminium specialist.

Conservatories	Sash Windows	Guttering	Doors
Orangeries	Casement Windows	Verandas	
Canopies	Bi Folding Doors	Fascias	

For a no obligation quotation

Matthew Sanders 07976 586 615

Tel/Fax 01767 651 815

email msanders471@btinternet.com

Office 81, Cinques Road, Gamlingay, Sandy, Beds SG19 3NR
A FENSA Registered Company, 10-Year Insurance Backed Guarantee

LOCAL ELECTIONS

Boring but Important?

Elections need to be contested

On May 5th Gamlingay residents will have opportunity to elect their parish and district councillors.

The National Association of Local Councils published a report into 2021's Local Council Elections (www.nalc.gov.uk) some key parts of which we are reprinting below. *The Gazette's* objective in doing so is to encourage anyone who would "like to make a difference" or to "change things", (see later for more reasons why people stand for election) to put themselves forward as a candidate. Gamlingay PC's clerks can provide further information on how to proceed. Email: clerk@gamlingaypc-gov.uk or phone 650 310.

Edited Highlights from NALC report

England's 10,221 local (parish and town) councils are the first tier of local government. Local councils are the smallest local authorities and play a crucial role in local governance as they cover an estimated 40% of the population across England. They raise over £600 million through council tax, referred to as a 'precept', and like any local authority they have specific statutory functions and powers. These councils employ staff, own premises, and provide services to their local community.

Like any local authority, councillors

are elected to represent their community, develop strategies for their area, and work with community groups, amongst other responsibilities. There are around 100,000 local councillors in England – four times as many councillors than in principal authorities – all volunteering their time (over 14 million hours a year) by taking up civic office to make decisions about improving their area (NALC, 2018). The decisions they make affect the quality of life and well-being of citizens in countless ways, given that local councils are responsible for a growing range of responsibilities, assets, and services.

In 2020, NALC published its inaugural local elections report. This report followed the main cycle of local elections in May 2019, in which an estimated 59% of local councils held elections. The report collated data from surveys of local councillors, local councils and county associations and concluded that this research project would be completed within the same template for every election cycle, to ensure a thorough analysis of the status of local democracy.

Several themes emerged from this report:

- Use of social media for the promotion of elections was not widely used by councillors (7%) and local councils (32%)

- Local councils and county associations should be working with under-represented groups to encourage increased diversity on local councils
- Many councillors were elected in uncontested elections (29%) or co-opted onto local councils (38%)
- The lack of contested elections was a hindrance to the democratic process and limited the ability of the electorate to hold local councils accountable for their actions.

The number of councillors elected through contested elections has significantly increased from 29% in 2019, to 38%. Furthermore, 10% of responding local councils reported that all local council seats were filled by councillors who had not served before, a significant increase from 1% in 2019. Despite this positive change for democratic participation, there are still obstacles to overcome. 59% of local councils reported seat vacancies after the elections, with a further 44% needing to co-opt seats. Many local councils require further support from county associations and principal authorities. A reported 22% of county associations did not raise awareness of local council elections in their boundaries. 62% of county associations reported 0-25 uncontested elections in their area, whilst 27% reported 76+ uncontested elections in May 2021. This tells us that there are

HEAT STREET LTD
DOMESTIC HEATING SPECIALISTS

Trustpilot
★★★★★
TRUST YOUR LOCAL FAMILY BUSINESS

- Natural Gas & LPG Boiler Installations
- Boiler Replacements
- Full Central Heating Installations
- Annual Boiler Servicing
- System Powerflushing
- Hot Water Cylinder Installation
- 0% Finance Available
- Price match
- And More....

Call us today
07494 389 041
info@heatstreet.co.uk

0% Finance
Options Available


PRICE MATCH PROMISE

Visit our website for an INSTANT QUOTE
www.heatstreet.co.uk

Contact: David Dennis at Heat Street Ltd, 5a King Street, Potton, Bedfordshire SG19 2QT

WORCESTER Accredited Installer | BOSCH | City & Guilds | safe

Clarke Midgley
Professional, reliable & trustworthy
PAINTER & DECORATOR
Established 2002



Call 01480-880593 (Yelling)
or 07904-585963
or email
psychosibes@gmail.com

large swathes of local councils holding uncontested elections in over a quarter of county associations.

Survey of local councillors

Total responses: 556

The purpose of this survey was to explore the experience of the local councillor; for example, their reason to run for local council. Most councillors reported that they wanted to serve their community, a further 56% reported that they wanted to change things on their local council, but few councillors ran on a political platform.

Furthermore, this survey provides an overview of the demographics of newly elected councillors. Who are they? The average local councillor in this study is a white (91%), heterosexual (83%) male (59%).

Finally, this survey gives an update on the status of participatory democracy. 49% of respondents have served for 5+ years and 62% were elected in an uncontested election or co-opted. Social media use was varied but Facebook was the most common platform used by 37% to promote the election and 20% to promote their candidacy.

24% of those elected were new councillors; however, 49% of elected councillors had served for 5+ years and 25% had served for more than a decade.

Reasons for standing:

- To serve the community
- To change things in my community
- For political beliefs/values
- Because I was asked to
- To resolve an issue

OTHER:

Climate change and sustainability:

- “Specifically, to help the parish council take strong action on climate change.”
- “To lead environmental/sustainability improvements.”
- “To try (to) make climate-positive change.”
- “The existing parish council lacked knowledge of ecological issues.”

Party politics and democracy:

- “To try to encourage other independent candidates to stand for our parish council – rather than be put off by historical co-opted

conservative party members sitting in parish councillor seats without the right focus for parish council issues. To discourage party politics at parish council levels.”

- “To try to stop a political party’s total control over the council.”

Planning and development:

- “To understand planning law better & to not let developments happen without understanding what needed to be thought about when giving approval.”
- “Fight unwanted development and save our countryside.”

Representation:

- “To represent women and serve the community.”
- “To bring diversity into our town council.”

If you feel Gamlingay Parish Council or South Cambridgeshire District council isn't representing you and your life, or would simply like to be more involved in your community ... you know what to do!

Gamlingay Parish Council's BUDGET 2022-23

Precept per household remains unchanged

GAMLINGAY Parish Council has submitted a precept requirement of £207,477.00 for 2022-23. The precept requested is £1,477.00 higher for 2022/23 than the previous year.

The precept will give a Band D Council tax equivalent for 2022/23 of £138.02 (for the Parish Council element). This is the same as the Band D equivalent charge in 2021/22.

The tax base has increased from 1492.5 to 1503.2 this results in an increase to the Band D equivalent cost.

What does the Parish Council spend its money on?

We cover costs of grass cutting, maintenance and management of two cemeteries, play and recreation areas, community buildings and the library and staff to administer all our functions.

More details and action plans which inform the budget are available on our website: <http://gamlingay-pc.gov.uk/>

£10 per month increase in policing precept

Tell the Police and Crime Commissioner what you think.

POLICE and Crime Commissioner, Darryl Preston has launched an online survey asking for people's views on his proposed increase to the policing part of council tax.

You will find the survey on the Commissioner's website: cambridgeshire-pcc.gov.uk

VOLUNTEER DRIVERS

Community Transport Scheme
Call 07519 493 701

THE CUTTING MILL

2 Mill Street
Gamlingay

01767 650 250

Andrea, formerly in Potton,
welcomes everyone

CELEBRATING OUR
25TH YEAR

PROFESSIONAL STYLING
for all the family

Find us on Facebook

Simple Solutions 
(Cambs) Limited

Accounting & Administration for the small business

Small business? Find record keeping a chore? Not really sure what you should be doing?

Let us help – we can take the whole job off your hands or give you the training to complete it yourself –

Accountancy, Bookkeeping, Payroll,
VAT, CIS, 1-1 Training

Whatever you need we have the Solution!

For a free consultation contact
01767 677562 or
admin@simplesolutionscambs.co.uk

Councillors' Column

Keeping us up-to-date on South Cambridgeshire District Council and Cambridgeshire County Council matters.

Your councillors are always ready to help.

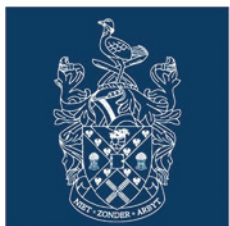
If you have any questions about the following matters or, indeed, any other council matter that you may need help with, then please do not hesitate in contacting:

Bridget Smith, your District Councillor, on 01767 650510 or at bridget@glockling.com and follow on Twitter @Cllrbridget and on Facebook, and

Sebastian Kindersley, your County Councillor, on 01767 651982, at skindersley@hotmail.com or write to Manor Barn, East Hatley SG19 3JA and follow on Twitter @SebKindersley and on Facebook.



Councillor
Sebastian Kindersley



South
Cambridgeshire
District Council



Councillor
Bridget Smith

Thakeham

Local Parish Council representatives have been invited to attend a virtual meeting with the Head of Greater Cambridge Shared Planning, Stephen Kelly, in early February, for an update on the Local Plan and OxCam Arc in relation to Thakeham's 'Southwest Cambridge' affected villages.

Thanks to all who responded to the Greater Cambridge Local Plan First Proposals, which make it clear that Thakeham's vision for 25,000 homes in and around our villages is simply not compatible with the principles of sustainable development. Thakeham's only route is via top central government channels where power exists to override local democracy.

Virtual decision-making for local councils – please listen, Government!

The legal requirement for parish, district and county councils to meet in person for formal decision-making is having an adverse effect on many councils as they try to maintain public health safety during the continuing pandemic, with meetings cancelled or minimized in terms of people

attending and business covered. The Local Government Association is lobbying government to reinstate provision for meeting virtually where councils feel the need to, but so far Central Government isn't changing its position.

Councillors at meetings must wear masks, keep socially distanced and make sure to have tested negative using lateral flow tests prior to attending.

This is the key time of the municipal year as budgets and precepts are being prepared by county, district and parish councils – but public participation is effectively discouraged due to the need to minimize numbers of people at present. While county and district councils live stream their meetings, parish councils are not set up to do so.

As this petition states, during the period earlier on in the pandemic when virtual meetings were legally permitted, public attendance and engagement shot up!

<https://www.change.org/p/uk-government-and-parliament-for-councils-in-england-to-have-the-choice-to-meet-remotely>

Household Support Fund

Reminder! This fund aims to help those struggling to pay for food, energy or other essential items this winter.

Cambridgeshire County Council has been allocated £3.58 million as part of the Government's Household Support Fund to help people who need financial support.

The Household Support Fund itself is a new one-off grant, which is live until 31st March 2022. This usually provides £49.00 (for a family) or £29.00 (for an individual) to cover food or household energy costs, but more funding may be available for people who can demonstrate a higher need – for instance for higher costs of filling an oil tank or buying a new cooker.

To be eligible for the Household Support Fund residents will need to earn less than £17,940 or receive any

of the following: Income Support; Income-based Job Seekers Allowance; Income-related Employment and Support Allowance; Pension Credit; Universal Credit; Working Tax Credit.

Details of how to access the scheme are available here:

<https://www.cambridgeshire.gov.uk/residents/coronavirus/household-support-fund>

Health and social care reforms juggling act

A major reorganization of health and social care is happening now, with legislation in the process of passing through Parliament. This sounds heavy! Is it important? We think it impacts on us all.

The reforms include raising money through the National Insurance contributions that working people pay; widening eligibility for County-funded social care from about 4% of the population now to an estimated 14%, in Cambridgeshire (which must be paid for of course); and requiring the local NHS (our local GPs, hospitals, etc) and the Local Public Health and Social Care Authority (Cambridgeshire County Council) to collaborate and integrate, and think at a 'neighbourhood' level.

Prevention is a constant theme – how can we live better and avoid getting sick in the first place? How can we give children – from birth – the best chance of a healthy life? What more can local communities be doing to play a part?

Some of the principles seem overwhelmingly positive but other aspects of the reforms are daunting. These are huge bureaucracies and whatever new money is raised will be directed first to the enormous Covid-induced waiting lists. That will take time to work through.

Nevertheless, from July this year it will be a legal requirement for 'Integrated Care Systems' to be up and running with the basics in place. This means that all of these

organisations, already working to deliver vaccinations, tackle waiting lists and attract new staff to a depleting workforce, also need to find time to reflect and prepare for new obligations under the Health and Care Bill.

Given that this new legal requirement involves local government, we've been learning fast and furiously. Our colleague Susan van de Ven is chairing the 'Cambridgeshire Health and Wellbeing Board' where the NHS and Local Authorities formally come together.

If you'd like to know a little bit more, or if you can teach us a thing or two through your own experience and expertise, please join us for a Zoom coffee and chat on March 9th, 6.00pm-7.00pm – just let us know your contact details and we'll send you the link.

This is particularly important for residents of Gamlingay, Hatley and the Mordens. Our GP services are based out-of-county and as such a great deal of our casework over the years has been about a complete failure to communicate and a lack of integration across county borders. We have raised this with the Director of Public Health and formally requested it be taken into consideration during the development of this new plan.

20s Plenty

Progress on introducing new 20mph speed limits to improve transport safety in Cambridgeshire will be discussed at an upcoming meeting when Members of the Highways and Transport Committee will examine how the council is looking to establish a new process for the implementation of 20mph schemes. This would allow

third parties – such as Parish Councils - to make an application for a 20mph limit in their chosen area, with a number of schemes then progressing following a period of assessment and prioritisation.

There are two types of 20mph schemes which can be introduced by the council – 20mph limits and 20mph zones. A 20mph limit typically covers individual or a small number of streets and requires signs only, while 20mph zones typically cover larger areas and require both signs and markings.

The former are more cost effective, but the latter have been found to have a greater impact in reducing speed limits, especially when accompanied by traffic calming measures. It is anticipated that details outlining how applications for 20mph schemes will be prioritised, once submitted, will be brought to a committee meeting later this year.

Cambridgeshire County Council Budget

The Joint Administration is to consider a 4.99% rise in order to close the authority's £16m budget gap this year. Next year's funding gap is likely to be even worse. 4.99% would mean an extra charge of £1.04 per week for a Band B, and £1.19 for a Band C household. More than half of all homes in Cambridgeshire are in these two bands.

Local government experts who visited in summer highlighted that historic decisions not to raise council tax in previous years had led to significant ongoing lost income to support services. The council is also

proposing to set up and spend a £14m fund over the next five years to tackle inequality, improve lives and care for the environment.

The council consulted residents at the end of last year about spending priorities. It visited a representative sample of residents at home and launched an online survey.

In its first year, if agreed, the Just Transition fund will fund schemes that increase flood prevention in the county, continuing a recent rapid increase in gully clearing. It will also work towards tackling climate change; widen opportunities for children with special educational needs and disabilities; increase independent living services and expand direct payments and individual service funds – where adults assessed as needing support can choose and manage their own care services; and Expand the 'Care Together' programme, providing care services close to where people live.

Fire Authority budget

Cambridgeshire and Peterborough Fire Authority is asking residents to have their say on proposals to increase the fire service's share of council tax for 2022/23. The Service is looking for a below inflation increase of £1.44 (around 2%) for the year, making the total contribution for the year £74.97 for a resident living in a Band D property.

Following the financial settlement confirmed by the government at the end of December 2021, which confirmed the level of funding for the next year, the Service has reviewed its financial position, making savings where possible, and has considered

Need an ...
ELECTRICIAN?

Peter E. Moss

Over 40 Years' Service
No VAT added



Phone: **01480 473892**
Mobile: **07802 720173**

mosselectric@hotmail.com



J Edward Bradshaw
Atcomputers
Contact-man.com

9 Honey Hill, Gamlingay, Sandy
Beds SG19 3JU

Consultancy	Hardware supplies
Bespoke software	E-Trading systems
Web/Cloud systems	Computer system design

The Online Manager
Yourname.contact-man.com
All your contacts here online on all devices

Phone: +44(0) 1767 650 429
web: jedwardbradshawe.co.uk



POTTON MOTOR COMPANY

Quality Used Cars with a Professional Service
Selected used cars bought for cash

With over 30 years experience, I aim to provide you with a professional service.

I stock a small selection of hand picked pre-owned cars, prepared to the highest standard.



www.pottonmotorcompany.co.uk
Green End Industrial Estate, Gamlingay

To book an appointment please get in contact:
01767 652869 | 07890 413306

what it needs to maintain its valued services to the public. The service has an excellent track record of finding savings from within the organisation. However, after many years of doing this, it becomes increasingly challenging without damaging service levels.

This year like everyone there is considerable pressure from inflation, increased energy and fuel prices and cost of living increases. However, with savings we can keep the council tax rise to a minimum – only £1.44 for the year for most residents.

Civil parking enforcement

By the time you read this South Cambs DC will have written to the County Council to ask them to submit an application to the Department of Transport asking them to approve Civil Parking Enforcement for all of South Cambs.

The police will no longer be responsible for enforcing illegal parking but instead Enforcement Officers employed by the County Council will be. The plan is to have two officers active full time moving between the villages and issuing parking fines to people who park where they should not. The agreement of the Greater Cambridge Partnership to underwrite the first five years costs has made it possible which is extremely good news. The less good news is that the wheels of government move slowly so we don't expect it to be implemented until 2023.

Mobile Library

CCC operates Mobile Library Vans which are free to join and use. Each Mobile Library vehicle carries up

to 3,000 items of stock including fiction, non fiction, large print, books on CD and cassette and books for children of all ages. You can request books/cassettes/CDs/DVDs and they have access to all the books in Cambridgeshire Libraries. You can also request books online to collect from the Mobile Library on our next visit.

Any books borrowed from the Mobile Library can be returned to any other Cambridgeshire Library and you can return books from other libraries to us, so no need to worry about missing your due date. You can renew and order books online and all vehicles have a lift for wheelchair users or those who find stairs difficult. You can also find free Hearing Aid batteries, sell stamps and reading glasses.

You can view stops at <https://www.cambridgeshire.gov.uk/residents/libraries-leisure-culture/libraries/mobiles/find-a-mobile-library-stop>

Cinques Road and the Cinques flooding

The lack of a storm drain in Cinques Rd is a long standing problem to which there currently appears to be no answer. Sebastian and Bridget continue to lobby the County Council to sort out this anomaly which will undoubtedly continue to cause problems as the impact of climate change increases the number of major weather events.

Footpath 10

Bridget and Sebastian have been talking fairly relentlessly to the County Council to encourage the opening of Footpath 10 as soon as possible. Bridget has emailed the acting CEO to ask when enforcement action will be taken as the footpath is now closed illegally.

Speeding in Cinques Road

Having spoken recently to people living in Cinques Rd. about an increase in speeding vehicles Bridget has asked the parish council if they could locate the speed camera there for a period. Our thanks to them for doing this so promptly.

Green Bins

The green bin collection was briefly suspended because so many of the staff were either off ill with Covid or having to isolate. We are pleased to say that it got going again exactly when we hoped it would.

May Elections

South Cambridgeshire District Council will be holding elections for the whole district on 5th May. If you would like a postal vote you can go on to the council's website to download a simple form. Likewise if you need a proxy vote, or indeed if you are not on the Electoral Register – all the forms are there.

Water Resources East

WRE is a consortium of all our local water companies and other bodies concerned with water – including the councils. Their job is to oversee and lead on the coordination of regional efforts and the production of a regional plan for water which may include the import of water and the development of new reservoirs. WRE has just published its very significant report and has opened a consultation on it.

You can find out more here: <https://wre.org.uk/wp-content/uploads/2022/01/WRE-Emerging-Plan.pdf>

Biodiversity

South Cambridgeshire DC has now approved its Biodiversity Supplementary Planning Document. This is a very significant statutory document that means that any new houses or businesses built in the district will have to demonstrate that they are enhancing biodiversity and not damaging it. The Council's biodiversity target is an ambitious 20%.

Accounts approved

The Audit and Governance Committee approved the 2018/19 Statement of Accounts for South Cambs DC this month and delegated final updates to the Head of Finance in consultation with the Chair of the Committee.

The auditors noted a few outstanding issues which they expect to close off this month, but which will have no impact on the Statement of Accounts itself.

Work is progressing at pace on the 19/20 audit and the auditors expect to start the 19/20 audit in March.

More grants for business

Covid continues to damage many businesses especially those in the hospitality sector.

South Cambridgeshire businesses can now apply for the latest COVID Government support grants via the District Council. The first is the

GARY HARE 

Property Improvements

All aspects of carpentry,
internal/external doors
Real wood/laminate floors
Bathrooms
Kitchens designed, supplied, fitted
Ceramic wall and floor tiling
External and internal painting,
decorating and wallpapering
Complete property refurbishment

Telephone: 01767 651 821
Mobile: 0777 397 3420

City and Guilds
25 years experience

Omicron Hospitality and Leisure Grant (OHLG). The second is further funding available via the Additional Restrictions Grant (ARG).

Full eligibility criteria, and online application forms, can be found on South Cambridgeshire District Council's website at www.scambs.gov.uk/business/grants-and-funding.

The OHLG is targeted at businesses within the hospitality and leisure sector which were trading as registered Business Rates payers in South Cambridgeshire on 30 December 2021. These businesses could be eligible for a one-off payment because the rise of the Omicron variant led to severe impacts on their industry.

Grants of up to £6,000 are available, depending on the rateable value of each business. Businesses in hospitality, leisure and tourism accommodation sectors, who offer in-person services (like food and drink, experiences and lodging for holiday purposes) are being encouraged to check the full OHLG – initial fund allocation £1.428m (90% of total allocation).

At the time of writing around 150 applications for the two funding streams had been received.

More grants for communities

South Cambs DC Community Chest Grants have increased their maximum award from £1,500 to £2,000. Community Chest grants will be extended temporarily to allow parish councils and community groups to bid for money to help them run events to celebrate the Queen's Jubilee. All details are available on the Council's website.

Local Plan

The First Proposals consultation for the joint South Cambs, Cambridge City Local Plan 2020-2041 concluded in December 2021.

The First Proposals were very much shaped by the feedback the councils received from the First Conversation consultation in 2020. This clearly indicated that addressing climate change was the top priority, so climate change, net zero and doubling biodiversity was put at the heart of the emerging plan.

The councils commissioned ground-breaking carbon-modelling work which has enabled them to understand how the plan can create effective policies to minimise climate impacts whilst addressing the growth needs of

the city and district.

Government requires the councils to objectively assess the jobs and housing needs of the region, requiring local plans to help create conditions in which businesses can invest, expand and adapt. Providing jobs near to residents to reduce the need to travel was a key issue for many people.

Evidence shows transport is the main source of carbon generation, and so locations with access to existing and committed key sustainable transport infrastructure and opportunities for cycling and walking were prioritised.

The councils also aim to make best use of previously allocated, safeguarded and brownfield land. The adopted 2018 Local Plans, which determine the current growth in the pipeline up to 2031, identify a number of large sites for development, such as Northstowe, a new village at Waterbeach, Cambourne West and Bourn Airfield, and others on the edge of Cambridge such as Marleigh, Darwin Green and Eddington which will continue to build out during and beyond the new plan period.

This means that together with other smaller village sites in 2018 local plans and those windfall sites with permissions since adoption, three quarters of the development required to meet the identified need in the Greater Cambridge Local Plan has already been identified. The balance, including a 10% buffer, to find for the new joint local plan for the period 2020 to 2041 is 11,640 homes of which 40% will be affordable.

Preserving the precious character of villages is extremely important to residents, so the emphasis has been move firmly away from unsustainable locations in rural villages. Only 4% of the proposed new homes in the First Proposals are in better served rural villages, while the bulk will be at two safeguarded sites at Cambridge Airport and North-East Cambridge on the edge of Cambridge and a new extension to Cambourne.

If COP26 has taught us anything, it is that we must be bold and act now to deal with climate crisis. That is why to address concerns on biodiversity, and achieve the vision of doubling nature, the First Proposals identify new green spaces and wildlife projects.

The plan proposes policies that demand 20% biodiversity improvement, higher than national standards, and requiring the planting of many

new trees. The proposals also set ambitious targets for building standards, including recommendations for low carbon buildings to help in greening South Cambridgeshire.

Within the control of the emerging local plan, are proposed the highest achievable standards for water use in new homes at 80 litres/person/day together with surface and rainwater harvesting, and grey water recycling. However, even with these measures, it is clear from evidence that provision of water and issues of over-abstraction are real obstacles to delivering new homes. For that reason it is made clear that unless proposals for new water provision are brought forward, the councils cannot build the homes needed.

The two councils believe that this is an exceptionally green plan with the environment and affordability of homes at its very heart. It aims to make South Cambridgeshire, within the context of Greater Cambridge, a place where a big decrease in climate impacts comes with a big increase in the quality of everyday life for all our communities.

Climate Change & Environment Strategy (CCC)

The County Council's Environment & Green Investment Committee has undertaken a major revision of the County Council's Climate Change & Environment Strategy. This was approved for referral to the Full Council at its budget meeting in February. It sets a new target for a Net Zero Cambridgeshire – 2045, five years sooner than the current 2050 target. The budget, to be discussed

PLUMBING & HEATING

Get in touch
07792698093

ALISTAIR JOHNSON

- PLUMBING
- HEATING
- BATHROOMS
- MAINTENANCE

 info@ajplumbing-heating.com

at the February meeting, proposes allocating £6.83 million to tackling climate change in the district during the upcoming year.

The strategy commits the Council to focusing its contribution in three key areas – reducing carbon emissions, supporting the development of resilient communities so that they can adapt to the impacts of climate change, and supporting nature and biodiversity to thrive.

As part of the Council's plan to achieve Net Zero for its own direct carbon emissions by 2030, the draft strategy sets out how the Council will meet that deadline including low carbon transport solutions for fleet vehicles, net zero carbon buildings and generation of renewable energy from Council assets and improving the management of the Council's open spaces to increase and biodiversity.

The Strategy also commits to halving the Council's indirect emissions through its supply chains by 2030, and sets out how it will work in partnership with the Cambridgeshire & Peterborough Combined Authority's Climate Commission and district partners to bring actions together to align work programmes. It also identifies how the Council will collaborate with businesses and communities and support all sectors to understand how they can reduce carbon emissions, benefit nature, and take positive climate action.

Forty years of Neighbourhood Watch



This year marks the 40th anniversary of Neighbourhood Watch, first established in Mollington, Cheshire, in 1982. It has since grown to become the UK's largest crime prevention charity.



Councillor
The Mordens
Heather Williams
07885 774775

Local Plan

Thank you to all who took part in the local plan consultation. Officers are now looking through all the submissions and are aiming to compile the draft local plan ready for consultation in the Summer. The Local Plan sets out where development of housing and commercial sites are proposed to be situated during the planning period. The current documents are out for consultation soon but give a clear indication of what is proposed by the administrations. The policies within the Local plan will in many ways dictate how development happens in our villages for years to come. It will be what we rely on to support or refuse planning permissions. It is also vital that it is sound, robust, and reliable as the plan will need to be approved by an independent planning inspector. If the plan was to fail then our district, and our villages would be open to speculative development. This is why, it is one, if not the, most important document the District Council is responsible for producing.

The Council has gone through the for call for sites and then Councillors and officers deciding which out of those proposed developments they want to include within the Local Plan. Ultimately the Council will have to come forward with a credible plan that will pass a planning inspectorate to show it delivers housing for growth within the Local Plan area.

The proposed Local Plan will have huge impacts on the District and I am sure that all the parishes within the area will want to make comments once more on these proposals when the next consultation begins. As a District Councillor, I have several concerns regarding the proposals put forward. My initial concerns are that around

48,840 houses are included within this Local Plan which is above and well beyond what the Government's calculated need suggests. Growth figures have been calculated within the Local Plan by a methodology that has not been used anywhere else before to our knowledge which has worried many.

I also have concerns about the build out rates that are proposed due to the worry of how realistic they are and to be so reliant on them given build out rates are at the discretion of developers. It is also noted that the proposed developments within this Local Plan, especially those around the city, are very dense, cramming lots of houses into small spaces, this will have a big impact on communities and residents' privacy in relation to garden space etc.

Water is a grave concern given the existing pressures on chalk streams and water supply in our area. 48,840 houses using 80 litres a day equates to over a billion litres of a water needed every year, if the house numbers were lower, the water demand would also reduce. This has already been challenged by councillors and the response has been it is for others to sort the water problem, but it seems unreasonable to pass responsibility to others when so many more houses are being proposed. Requiring this amount of housing within the Local Plan with the infrastructure not being there is of great concern.

2018/19 Accounts Audit

The length of time that these accounts are taking to complete is alarming. We will soon be approaching the third anniversary of the 2019 year end and at the time of writing this report no accounts have been agreed. This also means that residents have not been able to see accounts for the 2020 or 2021 year end, only time will tell how long it will take to see this year's 2022 accounts. The administration has apologised for underestimating the amount of work involved, and indeed admitted not always prioritising the year end accounts. This may not be a 'juicy' subject, but it is a fundamental responsibility of the administration to show residents how their money has been spent in a timely manner. It's disappointing that the administration took this approach because since 2018 I and other councillors have been raising the issue of lack of resource in

the finance department. Three years on, for the administration to admit they haven't been resourcing the department sufficiently, shows, in my view, either a lack of willingness to listen to others or a failure to take the appropriate action required. Whatever the motive, this lack of judgement, means that the council is making multi-million-pound decisions without any up to date accounts. It is hoped that the accounts will be completed at the end of February. Additional external auditors fees are expected to be over £100,000.

Universal Credit

Please see below details of how the District Council can support people who are financially struggling at the moment. In the current climate many people will find themselves in financial difficulty for the first times in their lives and seeking help may be a daunting and scary experience. I would stress that all conversations with the council, or myself are confidential. And whether this is the first time or not, if you, or anyone you know, is struggling please reach out, there is support out there, short term/ long term which ever applies to your circumstances please do not suffer in silence.

There is a range of options for those struggling financially, including:

- Discretionary Housing Payments which provide financial support towards housing costs. You can apply for these Discretionary Housing Payments
- The Council Tax hardship fund, which aims to provide support to those who are struggling financially

because of the pandemic. You can apply for this Hardship Fund

- Support and advice from our Welfare and Money Maximisation Officer, Lucy Tompkins, who can be contacted via Lucy.Tompkins@scams.gov.uk
- Along with Cambridgeshire County Council and partners, we also still offer one-off small payments to help with immediate food or fuel needs – up to £49 for a family, or £29 for an individual, for food or fuel. Anyone needing that one-off help should email our communities team.

Email the benefits team at benefits@scams.gov.uk, or call 01954 713 000 if you have any questions.

Green Bin collection

Green bin collections should now be back to normal, waste crews have struggled to collect any bins missed. Unfortunately, if your bin is missed you may have to wait until the next scheduled collection. If a missed green bin causes an especially difficult issue for a resident, such as someone who is elderly, disabled or receives an assisted collection, they are asked to call their Council to discuss their individual situation. South Cambridgeshire District Council: 01954 713 000.

Five-year land supply

At a recent Appeal the five year land supply was challenged, I'm pleased that the inspector has found that the council does have a supply still despite the discounting of 978 dwellings that the council had included in their supply. The inspector found that 'the Council's housing land supply as at April 2021 was 5.6 years, a slightly

improved position compared to 5.07 years at the time of the last appeal.' This is a relief, but no doubt eyes will be closely peeled on the next published figures given the current climate.

If I can be of any assistance then please do get in contact by any of the details below.

Cllr Heather Williams
 SCDC The Mordens Ward
 Tel: 07885 774 775
 Email: cllr.williamsh@scams.gov.uk
 Twitter: [@Cllr_H_Williams](https://twitter.com/Cllr_H_Williams)
 Facebook Page: Cllr Heather Williams
 Website: www.cllrheatherwilliams.co.uk

Gamlingay & District History Society

Gamlingay and District History Society meets regularly throughout the year, with organised talks, social events, and visits to places of historic interest. Our next meeting is at 7.30pm on Tuesday 8th March in the main hall at the Hub, when Nicky Paton will give a talk about the remarkable ancient graffiti in Royston Cave. Royston Cave was discovered in the centre of Royston in 1742, and contains hundreds of medieval carvings in its chalk walls.

This talk was originally advertised for February but due to circumstances beyond our control has been rescheduled. You can attend as a visitor for £3.00, or become a member and gain free access to all our lectures. Find out more at www.gamlingayhistory.co.uk or visit www.gamlingayphotos.co.uk, to see our collection of historic photos of the village.

POTTON WINDOWS LTD

Quality PVCu
 Windows and Doors
 Secured by Design

FENSA and 10-year Guarantee
 Professional Service Assured
 Misted-up double glazed units
 replaced

Tel: 01767 260626

E-mail:
sales@pottonwindows.co.uk

Seasoned Firewood Logs



Firewood logs, all hardwood (beech, oak, ash, elm and sycamore), split and fully seasoned, all under 20% moisture and ready to burn.

No softwood or undesirable hardwoods such as willow/poplar in the bag, only the best burning woods.

£85 (inc. VAT) for a bulk bag (builder's bag) or
 £160 (inc. VAT) for 2 bags.

Constant supply throughout the year.

Free delivery within a ten-mile radius of Gamlingay, St Neots and Godmanchester.

We will deliver further for a small delivery charge or free for a multiple order.

Payment on delivery.

Contact Simon Gurry
 on 07734 159 501

Let us transform the quality of your lawn!



- ✓ Greens up and thickens the lawn
- ✓ Removes weeds and minimises moss
- ✓ Completely safe for children and pets
- ✓ Locally owned and operated business
- ✓ Regular personalised treatments
- ✓ No contract - Direct Debit available



FREE Lawn Analysis: 01767 651 639
www.greensleeves-uk.com • Email: hunts@greensleeves-uk.com

22 in 2022 | What can you do?

THE Climate Action Group (a working party established by the Parish Council) has now met twice and is producing some good ideas to help Gamlingay and its residents make a personal difference in this Climate Emergency we find ourselves in.

So much of this emergency comes back to energy – the power we consume doing the thing we do and the origin – and cost – of that power. In the next few weeks we'll start to see substantial increases in charges for gas and electricity and we are now hearing that there will be further substantial price hikes in the Autumn. These increases won't

just be on our domestic energy bills, they will be on just about everything we use and consume. So we are all going to have to try to be wiser consumers.

To that end we aim to produce 22 top "climate" tips which we'll promote in the Gamlingay Gazette and elsewhere during 2022. Some of us have been doing these things for years, others know they should have been, but didn't yet get round to it, and some of the ideas put forward may well be eye-openers for many of us.

We each have our own thoughts on the matter, but what we'd really like are your ideas, your actions, your tips which

you can pass to us and which we'll share in the community. We'll do so either anonymously or with your name against it – it's your choice.

Please send your contributions, just a few sentences, to: keith.warburton@gamlingay-pc.gov.uk

If you would like to get more involved in Gamlingay's climate actions, please let us know. We are an open and inclusive group. We'd especially like to hear from youth groups – it's their world that is mostly being impacted by our choices.

Here are the first 2 of the 22 in 2022

Only fill the kettle with as much water as you need

At current prices it costs approximately 1p to boil enough water for one cup. At only 5p a day if you have five cuppas, the "cup that cheers but does not inebriate" is still good value. But if you put enough water in the kettle for five cups at a time (as a visitor did recently at the writer's house) then that's going to be the equivalent of an extra 20p per day.

But that's £1.40 a week – which maybe still doesn't sound a lot, but in a year that's £72! And remember, electricity costs will increase substantially over the coming year.

Turn the heating down and put on another layer of clothes

This is of course most relevant if you are used to walking about the house in thin clothes. If you are already wearing so many clothes that you can hardly move, this one probably isn't for you. But maybe bear in mind that if it's just your extremities that are cold you can put on thick socks or fingerless gloves, perhaps, or use a blanket round your legs and between your feet and the floor – saving your fuel bills and helping to save the planet at the same time.

Potton View

Residential and respite care for the elderly



Rooms from
£750
per week

Potton View Care Home can accommodate up to 31 Residents, all on the ground floor. The Home has been completely refurbished in 2018 when it was purchased by Black Swan. It has high quality lounges, dining room and bathroom facilities as well as a salon.

Outside there are extensive enclosed gardens and an internal courtyard. The property is a detached, purpose built care home with a car park at the front. The Home is situated between the villages of Potton and Gamlingay in easy access of local amenities.

Key Features

- Landscaped gardens
- Close to the local amenities
- Fully refurbished in 2018
- Home cooked food
- En-suite bedrooms with large wetrooms



We are very proud of what we do and are always keen to show visitors around. No appointment is necessary so please feel free to drop in for a guided tour, coffee and cake!

We look forward to meeting you...

Promoting Dignity, Respect, Independence & Individuality

Potton View Care Home, Mill Hill, Potton Road, Gamlingay, SG19 3LW
01767 654866 pottonview@blackswan.co.uk www.blackswan.co.uk

Gamlingay Walks

Please share with other readers your favourite walks in, through and near the village.

Supply clear directions, remembering that some people may be new to the area, so don't take local knowledge for granted. If possible please supply photographs of interesting views or potentially confusing junctions along the way.

Ideally circular walks should start and finish either at the Eco-hub on Stocks Lane or "the crossroads" (Mill Street, Church Street, Green End, Waresley Road.)

Walk 08 Donkeys and the Drove Road

Duration:

About 2 hours 15 minutes

Distance:

5.75 miles

Terrain:

Flat, some road walking, one stile, footpaths

Start:

Gamlingay Eco-Hub

Route:

1 Turn left from the Eco Hub and walk to the bottom of Honey Hill, then turn sharp right onto Mill Street. Take the first turning on the left into West Road. Bear left by Cowslip Lane and turn right at the first T-junction. At the second T-junction turn left onto Heath Road. (1)

2 Walk carefully along the road for about 700yds. and turn left onto the footpath at the renovated Onion Barn.

(2) Follow the footpath, crossing a stile, for about 750yds. Turn right at the bottom of the field (3) and immediately turn left and go through a metal gate over a small bridge. (4)

3 Follow the footpath and after about 550yds. take the right hand fork (5) and walk, with a field on your right and a quarry on your left, to reach Potton Road. Turn right and walk along the road, passing 40 mph and Gamlingay signs, to the crossroads. You may see donkeys in the field on your right.

4 Go straight across the road into Drove Road. (6) After about 600yds. turn left alongside a house, onto the public bridleway, marked "The Greensands Ridge". (7) Walk for about 500yds. past White Wood on your left, taking care not to miss the often

unsignposted footpath on your right. (8) If you reach a gate on your left or a steep hill, you have gone too far.

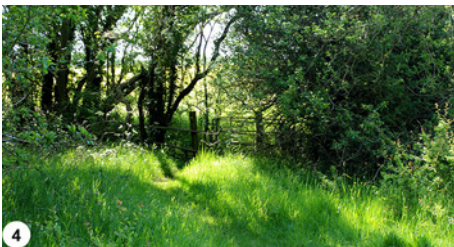
5 Follow the path through a wooden gate to pass Tetworth Hall. (9) Continue straight through a metal gate, past a row of trees on your left and through two more gates to reach the end of The Greensands Ridge.

Turn right out of the gate, onto Tetworth Hill. Go straight across at the crossroads towards Gamlingay.

6 Turn right after the Cinques car park and head towards the houses. (10) Bear right in front of the houses and take the footpath on your left at the side of house no. 15. (11) Stay on this path for about 300yds, bearing left after a house on your left, avoiding the footpath to the right (leading to the Moon Gate).

7 Walk down the path, Park Lane, to reach Heath Road again. Turn left and after 100 yds. turn right into Dennis Green.

8 Retrace your steps to the start, by turning left after 200yds, signed Clopton Way and walking along West Road to reach Mill Street. Return to the Eco Hub turning right into Mill Street and left into Honey Hill and Stocks Lane.



More Lions needed

HEALTH and Safety issues surrounding not only Covid but also the increased age of our members prevented Biggleswade Sandy Lions from undertaking street collections at Christmas time and it is most likely that, unless we can recruit more younger members, street collections will not happen in the years to come. Thank you to all those members of the community who supported us.

Like most voluntary organisations we have been finding it difficult to recruit members during lockdown. Nationally several Lions Clubs have had to close which means that the various services they had been able to carry out and support have suffered. We do not want that to happen in our area but to carry on we must have more members. If you are able to give a little of your time to help us with the many projects we support we would like to hear from you. Just to tell you some of them, we support Message in a Bottle and Message in a Wallet which help the Paramedics and emergency services when someone is taken ill at home or while they are out, recycling of used spectacles and hearing aids, ROAR which is a project asking young children what they would like to change in the world and many more. To find out more about these projects go to our website bslions.org.uk or speak to one of our members.

Our first event in 2022 is a Jumble Sale at the Clifton Community Centre on Saturday 19th March. Then in the run up to Easter we have our Easter Egg raffle. As usual this will be based in the local clubs and pubs in the area. Do look out for our Egg raffle in your local and please support us. Covid permitting we hope to see you at various community events this summer. Do come and talk to us.

John Bennewith

Beetroot Tart Tatin

Nothing to be afraid of!

Vegetarian recipe from Roderick Starksfield



Many people seem afraid to tackle a Tart Tatin, however, they are simple to make and very good. You will need an oven proof pan.

Serves two

Ingredients:

- » 1 large beetroot, cooked or raw, see below
- » 3 tbsps. sugar
- » A good splash of Balsamic vinegar
- » Block of puff pastry

To serve:

- » Horseradish sauce
- » Tasty green leaves: watercress, rocket etc.

Method:

- » If the Beetroot is raw, trim off the stalks and leaves, leaving about 3cm of stalk, otherwise the colour will leak out of the beetroot.

- » Bring a saucepan of water to a boil and put in the beetroot.
- » Simmer for 45 minutes or until the Beetroot is soft to a knife.
- » Drain the pan and let the Beetroot cool a little so you can handle it.
- » The skin will easily slip off, then trim the stalks and root.
- » Use a piece of kitchen paper to hold it if you don't want pink fingers!
- » Heat the oven to 200°C, 180°C fan or Gas Mark 5.
- » Cut the Beetroot in half.
- » Roll out the pastry to about 1cm thick and cut out two circles large enough to completely cover the top of the beetroot.
- » Place the sugar in the oven-proof pan and add a splash of water (about 1 or 2 tbsps).
- » Bring to a boil and wait until the colour changes to a light gold (the bubbles will be bigger).
- » Carefully add the balsamic vinegar, the caramel is very hot so there will be a lot of steam, try not to breathe it, it is very sharp!
- » Place the beetroot on the pan, cut-side down, and carefully cover with the pastry, tucking the pastry down to the pan, take care, the caramel will be very hot!
- » Bake in the oven for about 35 minutes until the pastry is golden.

To serve:

- » Using a fish slice carefully remove the tart Tatin and place on a dish, beetroot side up.
- » Horseradish is an almost essential addition.
- » Serve with some sharp tasty leaves.
- » A glass of Red Wine is very good!

Slimming World with Penny

...at the Gamlingay Eco Hub



Come along on Mondays at 6:00pm – no booking required.

New, existing and returning members all welcome.

Telephone: 07737 809516/WhatsApp

Email: slimwithpenny@yahoo.com

Facebook: <https://www.facebook.com/slimwithpennygamlingay>



Quiz and Puzzle Corner

by Kevin Bentley

Komino rules

USING the whole list of reversible digit pairs, complete the grid so that each box contains one pair. A digit cannot be beside the same digit in an adjacent box. Boxes containing a pair of identical digits cannot be side by side.

<p>Komino</p> <div style="text-align: center;"> <table border="1" style="margin: auto;"> <tr><td style="width: 20px; height: 20px;"></td><td style="width: 20px; height: 20px;"></td><td style="width: 20px; height: 20px; text-align: center;">8</td><td style="width: 20px; height: 20px;"></td></tr> <tr><td style="width: 20px; height: 20px;"></td><td style="width: 20px; height: 20px; text-align: center;">2</td><td style="width: 20px; height: 20px;"></td><td style="width: 20px; height: 20px; text-align: center;">1</td></tr> <tr><td style="width: 20px; height: 20px;"></td><td style="width: 20px; height: 20px;"></td><td style="width: 20px; height: 20px; text-align: center;">8</td><td style="width: 20px; height: 20px; text-align: center;">7</td></tr> <tr><td style="width: 20px; height: 20px;"></td><td style="width: 20px; height: 20px; text-align: center;">5</td><td style="width: 20px; height: 20px;"></td><td style="width: 20px; height: 20px; text-align: center;">7</td></tr> <tr><td style="width: 20px; height: 20px;"></td><td style="width: 20px; height: 20px;"></td><td style="width: 20px; height: 20px;"></td><td style="width: 20px; height: 20px; text-align: center;">9</td></tr> </table> </div> <p style="font-size: small;">Copyright © 2022 Kevin Bentley. All rights reserved.</p>			8			2		1			8	7		5		7				9	<p>Easy</p> <table style="margin: auto;"> <tr><td>1 3</td><td>2 2</td><td>5 6</td></tr> <tr><td>5 7</td><td>5 9</td><td>6 6</td></tr> <tr><td>6 8</td><td>7 7</td><td>7 8</td></tr> <tr><td>7 9</td><td></td><td></td></tr> </table>	1 3	2 2	5 6	5 7	5 9	6 6	6 8	7 7	7 8	7 9		
		8																															
	2		1																														
		8	7																														
	5		7																														
			9																														
1 3	2 2	5 6																															
5 7	5 9	6 6																															
6 8	7 7	7 8																															
7 9																																	

January/February Solution

I HOPE that you have enjoyed the challenge of solving these Komino puzzles. These are similar to the ones I have published in my first book of 200 Komino Puzzles which is currently available with 25% off the retail price from my publishers (Troubador) for £7.50 at: www.kominopuzzle.com

Solution

2	3	7	3	5
4	6		1	7
3	6	8	6	3
9		7		3
7	6	4	1	8

Everyone at *The Gazette* sends a sincere thankyou to

Jim & Barbara Manning

for the immense amount of help they have given with distribution of the village newsletter over many years.

Jim and Barbara, we wish you good health and much happiness in your new life in Yorkshire!

Just a Thread Away



Bespoke
Garment Alterations
and
Professional Costumier

Based Locally in
Great Gransden

Please call or text
Laura on:

07702 281 726

justathreadaway@outlook.com
www.justathreadaway.co.uk

VIOLIN & PIANO TEACHER

Professional instrumental teacher
with 35 years of experience
has vacancies for new students.

Private tuition for all levels including
preparation for AB exams, performance
assessments, music theory/aural work.

DBS checked and fully insured.



Contact:

CARLA ROBINSON
DIP RAM, LTCL

Tel: 0777-2012928

email: gid.carla@gmail.com



CGTHERAPYS
SPORTS INJURY CLINIC
GAMLINGAY ECO HUB



Sports Massage



Examination
Assessment



Injury Treatment

Injury Diagnosis
Strength & Conditioning
Sports Massage Pre or Post Event
Injury Prevention



Craig Gant PGDip BSc Sports Therapy
T: 07739 533479
www.CGTherapys.com
Facebook: CGTherapys

What's On Diary

Send your entries to whatson@gamlingaygazette.uk

Beginners Breeze	Thursday 3 March	Ladies cycling. First Thursday of the month at the Eco Hub. Contact gill.kitchener@btinternet.com or 07842 135 732
Bellringers	Sunday 6 March	Thursdays 7.30pm to 9.00pm with John Boocock at St.Mary's Church, Gamlingay
Bin Collection Days	Wednesday 2 March Wednesday 9 March Wednesday 16 March Wednesday 23 March Wednesday 30 March	Black Blue and Green Black Blue and Green Black
Cock Inn	Monday 14 March	Monthly quiz nights starting at 8.00pm. £1.00 per head for various charities. New teams welcome.
Community Choir	Wednesday 2 March Saturday 19 March	First Wed of the month 8pm to 9:30pm, Hub Main Hall Third Sat of the month 10am to 12 noon, Hub Kingspan Hall
Connect Cafe	Fridays	10.30am to 12:30pm at the Eco Hub. All welcome to a friendly drop-in cafe for a cuppa and cake – £2 with free refills. Lifts available. Please contact the Eco Hub Manager.
Eco Hub	Mondays Tuesdays Wednesdays Thursdays Fridays Sundays	Kingfisher Disability Group – 10.00am to 3.00pm Zumba Gold – 10.00am to 10.45am Preschoolers' Story Time – 2:30pm to 3.00pm Slimming World Friendly Weight Loss Group – 6pm to 7.30pm Circuits with Joolz – 7.00pm to 8.00pm Mat Pilates – 9.30am to 10.30am Chair Pilates – 11.00am to 12.00noon Carpet Bowls. All welcome – 1.00pm to 4.15pm Yoga with Caroline – 7.15pm to 8.15pm Fitness for Injury. Improve mobility, stop injury – 9.30am to 10.30am Kingfisher Disability Group – 10.00am to 3.00pm Crafty Ladies Craft Group – 10:00am to 12:00noon Cha Char Chimps – Preschool Fun – 10.00am and 11.00am Home Education Group (every 2 weeks) – 11.30am to 2.00pm Alice Lucas School of Dance – 4.30pm to 19.45pm Youth Club – 5.30pm to 9.00pm Kingfisher Disability Group – 10.00am to 3.00pm Library Open – 10.30am to 12.30pm Connect Café Community Coffee Morning 10.30am to 12.30pm Little Ruggers Rugby Practice – 9.00am to 12.00noon
Gamlingay Allotment Association	Thursday 10 March	Membership Secretary Robert Carolan can be contacted on robertc66uk@yahoo.co.uk .
Gamlingay Archaeological Group	Thursday 3 March	7.30pm Blythe Way Community Room first Thursday of month Chris Tomsett: Chairman 01767 650 009 Julia Manley, Julialmanley@yahoo.com
Gamlingay Library	Mondays Wednesdays Thursdays Fridays Saturdays	2.00pm to 4.00pm – Preschoolers Story Time 2.30pm 2.00pm to 4.00pm – Free computer buddying – ask at the Library for more info 10.00am to 12.00noon 10.30am to 12.30pm 10.00am to 12.00noon
Gamlingay Parish Council	Tuesday 8 March Full Council Meeting Tuesday 22 March Finance & General Purposes Meeting	Meetings held at 7.30pm in the Kier Suite at the Eco Hub and are open to all. Planning Committee Meetings at 7.00pm prior to the Full Council and Finance & General Purposes Meetings. Clerks: Leanne Bacon and Kirstin Rayner Tel: 650 310 or Email: clerk@gamlingay-pc.gov.uk Agendas available on our website: www.gamlingay-pc.gov.uk and on noticeboards.

What's On Diary

Send your entries to whatson@gamlingaygazette.uk

Gamlingay Players	Friday 18 March Saturday 19 March	Our next productions at the Eco Hub are: "The 39 Steps" by Patrick Barlow at 7.45pm "The 39 Steps" by Patrick Barlow at 7.45pm
Gamlingay Walkers	Wednesday 2 March Wednesday 6 April	Meet at 9.30am first Wednesday of the month at the Eco Hub car park. New members welcome. Phone Miriam 654 891 for further information. Email miriamjones80@hotmail.com
Gardening Club	Tuesday 1 March Tuesday 5 April	Monthly meetings held in the Kier Suite at 7:30pm. Tea, coffee and raffle. The day of the Day Lily, Paula Dyason
Guild of St. Mary's	Monday 21 March Monday 25 April	Monthly meetings, usually third Monday of the month.
Guitar Club	Thursday 10 March	Meetings held every alternate Thursday. For further information call Geoff Bruerton on 650 748.
Hatley Coffee Morning	Tuesday 1 March	10.00am to 1.00pm at Hatley Village Hall. Everyone welcome. Donations split between the Village Hall and Church.
Hatley Parish Council	Tuesday 15 March	Ordinary Meeting at 7.30pm in Hatley Village Hall. Contact the Clerk: Nicola Pearce 650 640 or 07902 494 745. Email: parishclerk@hatley.info .
History Society	Tuesday 15 March Tuesday 19 April	Monthly meetings Tuesdays, 7:30pm Main Hall, Eco Hub Non-members welcome see gamlingayhistory.co.uk/lecture-programme
Housing, Police and Councillor Surgery	Monday 7 March	9.30am to 10.00am on the first Monday of the month at the Eco Hub.
Photographic Society	Saturday 5 March Monday 7 March Thursday 17 March	Term time meetings at the Avenells Way Communal Room. Contact Nick or Jackie Bruce 01767 651 025/07925 119 346 Peru and Ecuador from the Pacific to the Andes: Brian Reid
Potton and District Writers	Tuesday 15 March	Meetings held on the third Tuesday of every month by Zoom. Details on www.pottonwrite.weebly.com
Potton Ladies Club	Tuesday 1 March Tuesday 5 April	Meetings held on the first Tuesday of the month at the Mill Lane Pavillion, Mill Lane, Potton. Sarah Burgoine at sarahjburgoine@gmail.com or 631 415.
Social Club	Monday 7 March	Quiz and pool nights, live bands and Friday evening bingo. 16 Waresley Road, Gamlingay
Soup Lunches	Wednesday 23 March	Every fourth Wed of the month 12:30pm start, Church Hall
The Gazette	Friday 25 February	April issue deadline for all copy and adverts.
The Wheatsheaf	Wednesdays Fridays	Pie Night Fish & Chips eat-in and takeaway
Total Wellness Workout	Friday 10 March	Fridays at the Church Hall 9:30am to 10:30am. Bring some water and exercise mat or towel for floor work. £6.00 per class
Women's Institute	Tuesday 15 March Tuesday 19 April	7.30pm – AGM and "Tell a tale", bring along a memorable item 7.30pm – Subject: Corsets, Crinolines and Camisoles. Speaker: Fran Saltmarsh In the Main Hall at the Eco Hub at 7.30pm on the third Tuesday of the month. Please come along to our friendly meetings. For further information call: Lindsay 651 227, Jean 650 367, Jan 652 135
Youth Café and Club	Thursdays	5.15pm to 9.00pm. Year 4+ Cafe. Year 8+ Club

Village Information

Emergency Services

Police, Ambulance and Fire	999
Non-Emergency Fire	01223 376 217
Non-Emergency Police and Community Police	101
PC John Coppard john.coppard@cambs.pnn.police.uk	

Healthcare and Council

Medical centre	
Appointments	260 340
Out of hours	111
District nurses	08456 024 064
Age Concern	01354 696 650
Homecare	07776 021 611
Anne Hutson	
Community car scheme	07519 493 701
Alison Baker	

Parish Council 650 310

Clerks: Kirstin Rayner, Leanne Bacon
at *ecohub*: clerk@gamlingay-pc.gov.uk
web page: www.gamlingay-pc.gov.uk
Chairman: Harriet Gould
Vice-Chairman: Wendy Boyne

Faulty Street Lights	0800 7873 247
Library	651 226
Kate Laugharne	
Forward Gamlingay	
<i>Chair:</i> Sarah Groom	

Hatley Parish Council 650 640

Clerk: Nicola Pearce **07902 494 745**
hatleyparishclerk@hatley.info
www.hatley.info
Chairman: Margot Eagle

Politics

Member of Parliament	0207 219 3000
Anthony Browne anthony.browne.mp@parliament.uk	
County Councillor	651 982
Sebastian Kindersley	
District Councillor	650 510
Bridget Smith 03450 450 500	
Monday-Saturday 08:00 to 20:00	
South Cambridgeshire District Council	
Hatley District Councillor	07885 774 775
Heather Williams cllr.williams@scambs.gov.uk	

Churches

Baptist Church, Office	Church Office	651 519
	Sally Graves	650 112
St. Mary The Virgin	<i>Rector:</i> Hilary Young	650 587
	<i>Church Warden:</i> Nick Ingles	07828 934 003
	<i>Reader:</i> Chris Miller	650 779

Halls for Hire

Ecohub	Sarah Groom, Kate Laugharne manager@gamlingayecohub.org.uk	651 226
Everton Village Hall		682 251
Hatley St. George Village Hall	Kim Wilde www.hatley.info	650 596
Methodist Chapel	Parish Council	650 310
St. Mary's Church	Lindy Gorton	650 581
Social Club	Martin Hull	650 418

Hobbies, Leisure and Interests

Bell Ringers	John Boocock gamlingaybellringers@gmail.com	650 736
Booklinks	Kate Laugharne	651 226
Cafe Connect	Ann Kirby	651 134
Fridays 10.30am-12.30pm		
Community Choir	Jane Orchiston	0753 500 5908
East Beds Model Railway Society	<i>Secretary:</i> John Wakeman wakemanpj@aol.com	
Friends of St Mary's	Helen Miller	677 390
Gamlingay Allotment Gardeners Association (GAGA)	<i>Secretary:</i> Mick Slimm a.slimm@btinternet.com	650 650
	<i>Membership Secretary:</i> John Way johnway803@gmail.com	650 114
Gamlingay Archaeological Group (Gamarch)	Chris Tomsett <i>Secretary:</i> Julia Manley julialmanley@yahoo.com	650 009
Gamlingay Players	Amy Lovat, lovatl@hotmail.com	07843 527 979
Gamlingay Walkers	Miriam and Phil Titchner	654 891
Gardening Club	Lindy Gorton	650 581
Guild of St. Mary's	Liz Huckle	650 988
History Society	Peter Wright gamlingayhistory@gmail.com	
Lacecaps	Pat Brunson	01480 385 351
Ladybird Club	Mrs C Watson	650 707
Music Club	Geoff Bruerton	650 748
Photographic Society	Chair/Secretary: Jackie Bruce nickbruce7@btinternet.com www.gamlingay-ps.org.uk	
Potton and District Writers	pottonwriters@gmail.com	
Royal British Legion	Sebastian Kindersley	651 982
	Jackie Hough	651 070
Sandy and District Round Table	Lee Packham Brown	

Village Information

Sir John Jacob's Almshouses Trustees:	Jackie Hough Sebastian Kindersley Philip Gorton	651 070 651 982 650 581
St. Neots Model Railway Club	John Kneeshaw	j.kneeshaw@ntlworld.com
Village Show	Jayne Dawkins gamlingayshow@hotmail.com	07713 247973
Women's Institute	Lindsay Bygraves Jean York	651 227 650 367

Preschool Groups and Education

Carers Group	Bridget Smith	650 510
Everton Preschool	Julie	07814 815 491
Jelly Tots	Emma Radley Natalie	07156 027 150 691 477
Montessori	Mrs Pat Jenkins	650 645 07714 821 940
Rainbow Preschool	Lisa Burton	651 996

School

Gamlingay Primary		650 208
-------------------	--	---------

Sports

Bowls Club	Brian Culverhouse	651 020
Breeze Ladies Cycling	Gill Kitchener	650 035
Football Club (Youth Teams)	Chair: Brian Culverhouse	651 020
Gamlingay Gym		651 785
Gamlingay Netball Club	Gamlingaynetball@gmail.com	
Girls Football – MUGA	Nancy Kyle nantmarg@hotmail.co.uk	651 785
Junior Football School	Brian Culverhouse	651 020
Tennis Club	John Gray	654 165
Waresley Cricket Club	Rod Kerr waresleycc@hotmail.co.uk	07545 453 559

Youth Groups

1st Gamlingay Brownies	Jane Brown	652 997
1st Gamlingay Rainbows	Sarah Galvin / Jacqueline Boocock gamlingayrainbows@outlook.com	
2nd Gamlingay Guides	Benita Scott	650 547
Beavers	Mark Harrison	07979 102 568
Explorers	Vacancy	
Gamlingay Cubs	Steve Palmer	651 532
Gamlingay Scouts	Will Colebrook	07527 717 463
Gransden Cubs	Susan Jefferd	261 000
Pathfinder Scouts	Mark Harrison	07979 102 568
Tinuwen Rangers	Irene Gray	651 212
Youth Cafe	Lucy Rands	07929 453 235
Youth Club	Lucy Rands	07929 453 235

Cambridge County Council

Care Services

Adult Health and Social Service General Enquiries	0345 045 5201
Adult Social Care	0345 045 5202
Children's Services	0345 045 5203
Blue Badges Disabled Parking	0345 045 5204
Occupational Health	0345 045 5205
Learning Disability Partnership/Sensory Services	0345 045 5221

General Community Services

Citizenship	0345 045 5155
Education Transport	0345 045 5208
Education Welfare Benefits Service	0345 045 1361
Family Information Service	0345 045 1360
General Enquiries	0345 045 5200
Human Resources (Recruitment Line)	0345 045 5210
Library Services (includes automatic renewals)	0345 045 5225
Online Payments Support	0345 045 5211
Streetscene (Highways, Transport and Streets)	0345 045 5212
Switchboard	0345 045 5222
Trading Standards	0845 404 0506
Waste Management	0345 045 5207

Other Emergency Services

Power cuts	
UK Power Network	105
Water supply	
Cambridge Water	01223 706 050
Surface flooding	
Cambs County Council	0345 045 5200
Sewer flooding	
Anglian Water	03457 145 145
Domestic gas emergency	
	0800 111 999



WORBOYS GARAGE & FILLING STATION

Mill Street, Gamlingay

Serving Gamlingay since 1936



MOT TESTING STATION

Servicing and repairs on most makes of car and light commercials

Tyres - Batteries - Exhausts

Tel: 01767 650 273

travel counsellors



Kirstie Timmins Your Local Personal Travel Agent

Let me plan your next holiday, saving you stress and time, I will personally tailor your travel experience, providing impartial advice, to help you make up your informed decision. One to one excellent service from start to finish, with free local meetings available. 100% Financial Protection / 24/7 Support / 100% personal customer satisfaction

T. 01767 360014 M. 07815 814798

E. kirstie.timmins@travelcounsellors.com

W. <http://www.travelcounsellors.co.uk/kirstie.timmins>

FB@kirstietimmins



With us...it's personal



James Brickwork And Building

Telephone: 01767 651469
Mobile: 07775 874642

JAMES CLEMENTS
The Gables
5 Mill Street
Gamlingay
SG19 3JW



Extensions - Block Paving
Patios - Fireplaces - Walling

CHILTERN School of Motoring

Female Driving Instructor

Tel: Liz 07986 543 121

Email: info@chilternsom.co.uk

www.chilternsom.co.uk



LIFELONG KITCHENS LTD

Quality designer and bespoke fitted kitchens
Free, no obligation measure and design service

8 The Green, Eaton Ford, St Neots PE19 7AF
Tel: 01480 220908

Email: showroom@lifelongkitchens.co.uk

Can you HELP! the Community Transport Scheme? Volunteer drivers URGENTLY needed – Contact 07519 493 701

Gransden Self Storage

24-Hour Access
7 Days a Week
365 Days a Year

01767 676 189

www.gransdenselfstorage.co.uk

WINDOW AND CONSERVATORY CLEANERS

Qualitas Maintenance Ltd

Established 2008

Residential and Commercial window cleaners

Based in Gamlingay

Free quotations without obligation

Tel 07477 462 406

www.qualitaswindowcleaning.co.uk

Grovemount Limited General Builders

All building & refurbishment work undertaken.

PVCu windows, doors & conservatories.

Potton Road The Heath, Gamlingay

Tel: 01767 651 299

QUINCE Stoneworks

MARBLE, GRANITE & QUARTZ WORKTOPS

Templated supplied and installed onto new units or as replacement tops.

Combining modern machinery with traditional skills.

Tel: 01767 314180

Email: sales@qstoneworks.co.uk

All major brands of quartz supplied



STONEWORKS: 3 Potton Road · Biggleswade · SG18 0DU
SHOWROOM: 83 High Street · Biggleswade · SG18 0LA

www.qstoneworks.co.uk

Gott Plumbing & Heating

07805 650940

www.gottplumbingandheating.co.uk



For high quality services at affordable prices, contact Ed Gott for all your plumbing, heating and oil boiler needs.

- Oil Boiler Specialist
- Plumbing
- Central Heating
- Burst Pipes
- Leaking Taps
- Bathroom Refit
- Hot Water Cylinder
- Wet Room Installations

Reliable local plumber based in Yelling.
Email: info@gottplumbingandheating.co.uk