

# The Gazette



The Community Chronicle for Gamlingay, East Hatley and Hatley St. George

Established November 1991

December 2021

Circulation 2,007

## Gamlingay Gym... Good News!

### Now the Gamlingay Community Gym needs YOU!

DUE to the COVID pandemic, in March 2020 CAM Academy Trust closed the doors of the community gym on the village primary school site on Station Road. It has remained closed since then but following a tense eighteen months it looks as if good news may be just around the corner.

The gym facility was created under a Dual Use Agreement (DUA) between the then school operators and South Cambridgeshire District Council. This is a long-term contract to operate the gym and therefore the decision to just close the gym was not quite so simple.

In December 2020 CAM Academy Trust and SCDC entered into a period of consultation to try and find a way to continue to operate the gym in line with the existing DUA.

Out of this consultation, a group of local residents came forward and formed **Gamlingay Community Leisure** (GCL), who have put out the following statement:

***Our intent is to start a new charity, on the site of existing facility...***

Our intent is to start a new charity, on the site of existing facility, and resurrect this amazing gym for the people of Gamlingay and the surrounding area.

We aim to have the gym open and operational early in the New Year. The exact date of opening is somewhat out of our control, due to the time it takes to apply for, and be granted, charitable business status by the Charities Commission.

We plan to refresh the gym and



replace up to 50% of the equipment. For those who previously used the gym, you will know that some pieces of equipment were becoming very tired. These will be replaced in order to improve the user experience. This has been made possible partly by the award of a £7,500 grant from South Cambridgeshire District Council for Post-Covid Recovery activities for facilities formed in a DUA.

The Multi-Use Games Area, "MUGA", has been open and operational in the second half of this year and GCL will retain control of the bookings and use of this facility as well as the gym.

We will also retain the extremely successful GP referral scheme, which

has been a tremendous success in helping improve the physical and mental well being of some of the most vulnerable members of our community.

However, we are not waiting around for the business to be incorporated. GCL is working very hard during this period (as we have been for months) to finalise the lease arrangements between the school and GCL, to make the community aware of the gym reopening and ask for pre-registration of members.

This last point is crucially important for the success of the gym. We have worked hard to retain this vital community facility, but now we ask

*Continued on page 3*

# What's Inside for December

1,3	<b>Gamlingay Gym ... Good News!</b>
4-5	<b>Common Holly – for a warm and bright winter season</b>
5	<b>West Cambridgeshire Hundreds</b>
6	<b>Hello from the Hub</b>
8	<b>Potton View's Christmas Wishes</b>
9	<b>News from Gamlingay Village Primary</b>
10-11	<b>St. Mary the Virgin Church</b>
12-13	<b>Gamlingay Baptist Church</b> Gamlingay Christmas Lights Competition
14-15	<b>Is ShamPoo really just Fake Smell?</b> My marathon mission!
16	<b>GamArch at Flag Fen</b>
17	<b>Gamlingay Walks No. 06</b>
18-19	<b>Historyman – Winter snow</b>
20	<b>The climate emergency in our region</b> Local company pioneers re-manufacturing scheme
21	<b>Gamlingay Cubs Activities</b>
22	<b>Gamlingay and District Gardening Club</b> The Gamlingay Show – Make a note of the date
23	<b>Gamlingay Fireworks</b>
24-25	<b>Councillors' Column</b>
26	<b>Gamlingay Parish Council</b> Cambridge & Peterborough Combined Authority News
27	<b>CAPASP – Don't fall for it!</b>
28	<b>CAPASP – Follow Trading Standards advice...</b> Police surgery at the Eco Hub
29	<b>Decade Busters party</b>
30	<b>What makes a village so special?</b>
31	<b>News from Gamlingay &amp; District History Society</b>
32	<b>Cauliflower pâté</b>
33	<b>Quiz and Puzzle Corner</b>
34-35	<b>Village information and contact details</b>

## Submission of articles and images

The Gamlingay *Gazette* is an independent publication that aims to inform people living in and around Gamlingay of events of interest and is funded solely by advertising. We welcome contributions from people, both articles and pictures.

Please note that the editor reserves the right to edit any article submitted for publication for style, length and accuracy purposes.

For photographs, when submitting an image, please state who took or owns it so that we can credit their copyright. Every care is taken to ensure accuracy of items.

Views expressed do not necessarily represent the views of *The Gazette* Committee.

The  
**Gazette**

## Editorial Committee

### Editor

Keith Warburton  
editor@gamlingaygazette.uk

### Layout Editor

Larry New  
editor@gamlingaygazette.uk

### Distribution Manager

Julie Newman  
Call on 01767 650 685

### Distribution

Jim and Barbara Manning  
and the large team of volunteers  
that make it all possible

### Advertising Manager

Jan Bremner  
advert@gamlingaygazette.uk

### Village web pages

Roderick Starksfield  
gamlingay.org  
Ted Bradshawe  
Gamlingaygazette.uk

### What's On pages

whatson@gamlingaygazette.uk

### Chair

Larry New  
committee@gamlingaygazette.uk  
or call on 07725 246 741

## Next edition deadlines:

**Jan/Feb Issue:**  
**Friday, 26<sup>th</sup> November**

**March Issue:**  
**Friday, 28<sup>th</sup> January**

## Community Car Scheme

Gamlingay car scheme provides low cost transport for residents who would otherwise find it difficult to get to medical appointments.

It is currently operating under strict conditions, with only one passenger being carried, and they must be able to fasten their own seat belt.

For further details call  
**07519 493701**

Continued from page 1

the community to support us!

We need a minimum of 85 members to make the gym viable. This seems entirely possible because, at the time of closure in March 2020, there were 108 members.

Please help us to keep this facility by joining our gym which is, of course, **Your Gym!**

Membership will be £30.00/month, with £25.00/month for concessions. This is the same cost as 2020.

In addition, we'd love to hear from you if you are interested in volunteering to help us operate the gym (training will be given).

We also want to hear from any local businesses who might like to consider sponsorship opportunities.

To find out more, please visit our

Facebook page where you will be able to contact us directly with any specific questions and queries. Search **Gamlingay Gym**.

Physical activity boosts your body physically and mentally.

Walking to your local gym will help the environment and support a great local resource.

Avoiding driving to exercise helps reduce your carbon footprint, so join your Community Gym and make it a win all round!



**J Edward Bradshawe**  
**Atcomputers**  
**Contact-man.com**

9 Honey Hill, Gamlingay, Sandy  
Beds SG19 3JU

Consultancy	Hardware supplies
Bespoke software	E-Trading systems
Web/Cloud systems	Computer system design

**The Online Manager**

*Yourname.contact-man.com*  
All your contacts here online on all devices

Phone: +44(0) 1767 650 429  
web: [jedwardbradshawe.co.uk](http://jedwardbradshawe.co.uk)

# Potton View

Residential and respite care for the elderly



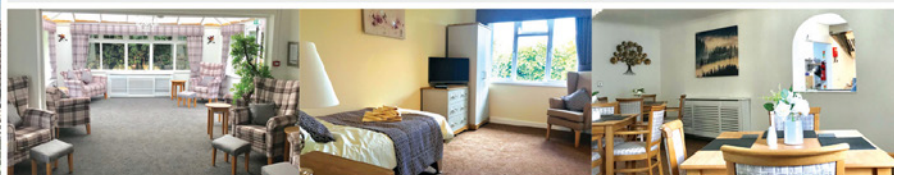
Rooms from  
**£750**  
per week

Potton View Care Home can accommodate up to 31 Residents, all on the ground floor. The Home has been completely refurbished in 2018 when it was purchased by Black Swan. It has high quality lounges, dining room and bathroom facilities as well as a salon.

Outside there are extensive enclosed gardens and an internal courtyard. The property is a detached, purpose built care home with a car park at the front. The Home is situated between the villages of Potton and Gamlingay in easy access of local amenities.

## Key Features

- Landscaped gardens
- Close to the local amenities
- Fully refurbished in 2018
- Home cooked food
- En-suite bedrooms with large wetrooms



We are very proud of what we do and are always keen to show visitors around. No appointment is necessary so please feel free to drop in for a guided tour, coffee and cake!

*We look forward to meeting you...*

## Promoting Dignity, Respect, Independence & Individuality

Potton View Care Home, Mill Hill, Potton Road, Gamlingay, SG19 3LW  
01767 654866 [pottonview@blackswan.co.uk](mailto:pottonview@blackswan.co.uk) [www.blackswan.co.uk](http://www.blackswan.co.uk)

# Common Holly – for a warm and bright winter season

## Winter shelter for the elves and fairy folk

IT MAY be a Christmas cliché but not many other trees look as good on a grey December day as the Holly with its shiny green leaves and bright red berries. No wonder the Celtic people of these lands decorated their homes with Holly stems in the dark winters, as we still do now.

Holly can be found on the Tree Trail map marked with a triangle, the bushes line the alleyway between Mill Street and Stocks Lane.

Although often found in hedgerows and thought of as a bush, the Holly tree was originally found growing as a native in the great primeval forests of Britain. It can grow to be 15 metres tall although usually the shade from competing trees keeps it at around 10 metres. Holly especially prefers to grow in the company of oaks or in the beech woods commonly found in the South of England. If the lower branches touch the ground they can take root and grow. The Holly can grow for 300 years.

*...spiky at the bottom, smooth leaves are found higher up...*

The bark of a Holly is pale grey with a silvery quality, the stems are green or purple. The dark green leaves are oblong in shape and spiky on the lower branches, whereas the upper branches and older trees tend to have smooth leaves. It is thought that the spiky lower leaves prevent browsers like deer from eating away the tree. As the Holly grows so slowly compared to other trees it has cleverly adapted a way to protect itself. A new leaf or shoot is often a pink or brownish-purple colour before it hardens into the darker green we know so well. Each leaf will remain on the tree for up to four years and once fallen decays very slowly. The beautiful outlines of the leaf skeleton can often be found below the tree.

The Holly blossoms in late spring, male and female flowers are carried on different trees. The tiny, four-petaled,



*Shiny leaves reflect the light and spikes protect from lightning.*

star like flowers are pure white inside with a pale pink flush on the outside. The female flower is slightly larger and can only be fertilised if pollen from a nearby male tree is carried over by a pollinator. Bees are particularly drawn to the Holly flowers by the strong honey scent of the liquid reward at the base of each flower.

The pollinated female flowers ripen from green to glossy red and by September, the Holly can be found decorated with them. Each berry contains four, tiny fruit stones with even tinier seed inside. These precious packages are consumed by birds who deposit the seed in pre-prepared fertiliser away from the parent tree, thus dispersing the Holly across wide territories and giving each seed the chance to have room to grow. Birds can eat the berries as well as Wood Mice and Dormice but they are definitely not suitable for human consumption.

### Species Support

Birds that enjoy eating Holly berries include Finches, Mistle Thrushes, Nightingales and Field-Fares. The dense, spiky leaves make excellent

protective cover for birds to roost and nest, often preferred by Robins, Wrens and Blackbirds. The slow to decay leaves at the base of the tree make deep, warm hibernation habitat for Hedgehogs and other small mammals. The caterpillar of the Holly Blue Butterfly feasts on the leaves as do the caterpillars of moths such as the Yellow-barred Brindle and the Holly Tortrix.

### English Folklore

The Celtic people were advised to bring Holly in during the winter as it would shelter the elves and fairy folk who were rendered harmless at this time of year. However they had to be sure to take every last leaf out by 31st January before the fairies would begin their season of mischief once more. The mirror like quality of the leaves was probably another good reason to bring branches in, as they would reflect the light of the fire and bring extra brightness during the darkest time of the year.

There are many legends of the Holly King who ruled over the second part of the year to be defeated by the Oak King who would then rule from

Midwinter to Midsummer. Sir Gawain and the Green Knight reflects this story of the guarding of the year and the never-ending battle. Carvings of the Green Man are found in many old churches and buildings sometimes dressed in oak leaves and others with holly or other leaves.

Holly trees were often thought to be protective and so planted near homes to keep away negative energies. This may have arisen from the thought that the tree could protect against lightning and so was planted near homes to draw the fire away from thatched roofs. Science has now shown that the spines on the prickly leaves act as mini-lightning conductors, protecting both the tree and nearby objects.

The wood of the Holly tree should traditionally never be cut but instead pulled free. The wood is very white and a heavy, hard wood making it useful for creating furniture and also walking sticks. Being so white and close-grained made it especially easy

to dye and Holly wood was often coloured and used to inlay furniture with beautiful marquetry in blue, green, reds and blacks.

Holly burns slowly with a good, strong heat – another reason why this tree may have been even more valued during midwinter. It was also burned by smiths and weapon makers. The strong stems made powerful spear shafts and chariot wheels. In times past the leaves of Holly were used as an infusion for ailments commonly associated with winter such as pneumonia, bronchitis and fevers. Holly berries are poisonous and should especially be kept away from pets and children.

The Holly tree was important to our ancestors and was given many names including 'hulver bush', 'holme' and 'hulm'. As with many old naming words for the natural world, these Holly names can still be found hidden in town, village and street names around the country.

*"Heigh ho! Sing Heigh ho! Unto the green holly:*

*Most friendship is feigning, most loving mere folly:*

*Then, heigh-ho, the holly!*

*This life is most jolly."*

As You Like It

William Shakespeare

Wishing you a cosy warm and bright winter season!

If you haven't received the Tree Trail leaflet or you would like a digital version then you can download a .pdf from the Gamlingay Parish Council website or DM us via Instagram or our Facebook page and we can email or deliver you a copy.

Remember to 'Leave nothing but footprints' and to follow the 'Countryside Code'.

Keep up to date with the Grow Gamlingay project at:  
Instagram: [growgamlingay](#)  
Facebook: [Grow Gamlingay](#)



**Bedfordshire  
Cambridgeshire  
Northamptonshire**

## West Cambridgeshire Hundreds

DURING lockdown, our nature reserves received a large increase in visitors, and these numbers have remained higher than usual. This has added to a general upward trend, which has been building for several years. Climate change has meant winters have been getting warmer and wetter in recent times, and last winter was the wettest for many years. Our ancient woodland reserves in the West Cambs Hundreds area are on impermeable soils and get especially muddy. When large numbers of people walk on waterlogged paths, they become churned, and it can take years for them to recover. People also naturally try to walk around muddy areas and significantly increase the width of the path, damaging sensitive plants on the edges and compacting the soil. The wider rides are a habitat in themselves and are part of what makes the woods special; they are often managed like a meadow.

A large proportion of the damage to our woodland happens in the winter. Our changing climate is

already responsible for extra damage, and over the last few years we have seen trampled areas on paths get wider, and more vegetation lost. As time goes by this is likely to get worse. We have also seen increasing problems during bluebell season when people and dogs stray off the paths.

Winter is the time when tree management is carried out. Over the next few years, more trees will need to be felled to keep the woods safe due to the spread of ash die-back disease and the prevalence of ash trees in our woodlands.

Our primary concerns are protecting precious places for wildlife, and safely engaging people with nature. We have a legal and moral responsibility to maintain these ancient woodlands in a safe, favourable and improving condition. In order to ensure these woods remain special for generations, the Trust will be restricting access during the winter and bluebell season. Guided bluebell walks will be run in April with a discount for

Wildlife Trust BCN members. At Gamlingay Wood, parking will be made available near the northern entrance for these organised events.

We would like to thank everyone in advance for your understanding as we carry out this vital work and ensure our beautiful, and vitally important ancient woodlands are protected.

You can find out more about winter closures on our website [www.wildlifebcn.org](#)

I'm Rebecca Neal and work with communities surrounding our West Cambs Hundreds reserves, delivering events and working with all ages.

E-mail: [rebecca.neal@wildlifebcn.org](mailto:rebecca.neal@wildlifebcn.org)

Facebook: [@BeccaBadgerWTBCN](#)

BCN Facebook/Twitter: [@wildlifebcn](#)

Visit: [www.wildlifebcn.org](#)

*The West Cambridgeshire Hundreds are a group of nature reserves owned and/or managed by the Wildlife Trust for Beds Cambs and Northants: Hardwick, Gamlingay, Hayley, and Waresley and Gransden Woods, Buff wood plus Cambourne Nature Reserve.*



# Hello from the Hub

## Happy Christmas from the Hub

IT'S BEEN a difficult year for so many of us with Covid still devastating families and with travel restrictions in place, spoiling not only holidays, but also the chance to see family and friends abroad.

Here at the Hub, we have felt very well supported by you, our community, who have booked the halls for meetings, parties, business meetings and classes, and we offer grateful thanks.

We are, as always, very grateful to so many people for helping us this year. To the fabulous Connect Café volunteers, who have overcome very difficult conditions to run the Connect Café on Friday mornings as often as they can.

To the volunteers who have helped us with events (especially the HubBub party), and to our team of dedicated and very valued Trustees, who give a lot of their time and expertise for free. Special thanks to Bob Petch for his dedication to the endless maintenance!

To the wonderful Keith, the Parish Council handyman, who spends a lot of time cleaning up around the Eco Hub, and taking care of our little garden at the back. He is always so cheerful and hard working.

To the library volunteers who have managed to keep coming in and ensuring the library remains open for all.

To Gamlingay resident Graham Pope who supplied this year's Christmas Card for the Eco Hub – we hope you like it as much as we do!

And to everyone who has hired a space in the halls this year, without you, there wouldn't be an Eco Hub to serve the community, so thank you so much for your support.

We wish you all a very happy and peaceful Christmas and an easier 2022.



With all very best wishes from  
*The Eco Hub Team*



Our Facebook page, Twitter feed and website have all the latest on What's On. We are also open 9.00am to 4.00pm for drop in during the week. Email is the best way to get hold of us for now as the managers are often working at home, or you can leave a message on our ansaphone. We are Sarah and Kate (joint managers) supported by Tony and John.

[www.gamlingayecohub.org.uk](http://www.gamlingayecohub.org.uk) | phone: 01767 651 226

email: [manager@gamlingayecohub.org.uk](mailto:manager@gamlingayecohub.org.uk) | Facebook/Twitter: Gamlingay Eco Hub

# Careers with KMG Systems Ltd

KMG Systems Limited is the global leader in the design and manufacture of equipment for the biggest names in the snacks industry. We've been established on Station Road, Gamlingay for more than 40 years and have over 150 employees. The business grows every year and we are currently recruiting for many skilled and unskilled roles including:

- > Fabricator Welder
- > Laser Operator/Nester
- > Press Programmer/Operator
- > Fork lift driver
- > Sales Engineer
- > Mechanical Engineer
- > Design Engineer
- > Project Engineer

We have other vacancies. Use the **Solution Gamlingay** app or visit **[www.kmgsystems.com](http://www.kmgsystems.com)** to see the most current vacancies and more information.

**Apply by email to [recruitment@kmgsystems.com](mailto:recruitment@kmgsystems.com)**

We see apprenticeships as an investment in our future and we are actively recruiting for apprentices.





## Potton View's Christmas Wishes

# Hoping for visits from choirs and the school

ON Saturday, 16<sup>th</sup> October we held our first social gathering since the beginning of lockdown and we were able to invite relatives and friends to join us for a BBQ.

It was well attended and we were entertained by Karl who sang and encouraged us to join him. Several of the more able residents danced as well.

It was so good to meet the off-duty carers in a more casual atmosphere.

Up to now, two people have come forward to help with the gardening, for which we are thankful, and will always welcome more volunteers.

We are currently changing the tubs and troughs to winter planting. We have had to purchase all our bulbs etc. as there was nothing from the past. So far we have

planted cyclamen and crocus along the driveway and have replanted a number of tubs with daffodils and tulips supported by pansies and polyanthus.

There are also 100 daffodils to plant in the ground at the back of the patio to naturalise into a daffodil dell.

Apparently Christmas is coming and there are plans afoot for various activities.

Hopefully, we can entice visits from church choirs to sing Christmas carols and it would be lovely if the school could visit to entertain us in some way. That is, of course, subject to negotiation between the people concerned. The residents are hopeful that various things can be arranged.

Meanwhile we wish you all the happiest of times.  
*John Bennewith, Resident*

**THE 39 STEPS**

Gamlingay Players  
present

Adapted by  
Patrick Barlow

Friday 28 January 2022  
Saturday 29 January 2022 **7.45pm**

Gamlingay Eco Hub, Stocks Ln, SG19 3JR

Buy tickets at [www.gamlingayplayers.org](http://www.gamlingayplayers.org)  
or at the Eco Hub

## The Gazette

We would like to thank

**Linda Searle**

*Church Lane and St. Mary's*

**Angela and Albert Jackson**

*Greenacres Estate*

for distributing the *Gazette* for many years and we wish them the very best of health, happiness and prosperity.

## Would you prefer your *Gazette* in colour?

WE publish three colour issues of *The Gazette* each year, and readers tell us how much they enjoy it.

Colour certainly gives an added vibrancy to the news and views.

Unfortunately, we cannot afford to produce every issue in colour.

But there is a way for you to experience each issue of *The Gazette* in full colour – you can read it online!

Go to <https://gamlingaygazette.uk> where you can download a .pdf version to read on your computer or device at your convenience.



# If you go down to the woods today...

IF YOU have walked down Station Road during the school day, you may have heard laughter and chatting coming from the woods at the far end of our school grounds adjacent to the brook.

This is our Nature Area, where children have the opportunity to learn and play in the woodland area. Our Nature School sessions are based on the Forest School approach to education, which was developed in Scandinavia.

Nature School sessions are flexible to accommodate children's interests and needs. This enables children to grow and develop in their own time, having the opportunity to revisit their learning and practise new skills and ideas.

We believe in the mantra 'There is no such thing as bad weather, only bad clothing' and are outside whatever the weather come sun, rain or snow (excluding high winds and thunderstorms!)

Activities include:

- exploring the natural environment
- singing and creating their own stories
- den building
- imaginary play
- climbing trees
- whittling
- lighting fires and campfire cooking
- bird watching
- plant identification
- bug hunting and identification
- social skill development such as talking, listening, teamwork

Each year group from Reception to Year 6 have opportunities throughout the year to take part in sessions. Our Nature School sessions have a clear impact on children's confidence and self-esteem, enabling them to develop their perseverance, persistence and other important skills that they can transfer to the classroom.

Staff carry out thorough risk assessments of the site and all activities. Children are also actively encouraged to participate in risk assessing their own activities and

experiences, enabling them to take responsibility for their own and others' safety. Rules are established in conjunction with the children and reinforced through positive instruction, sensitive discussions and Nature School circle times.

As a school we really value the opportunities Nature School provides for pupils to extend their learning from the classroom. The children (and staff!) love our sessions and it is definitely a highlight of our week!

*Beth Slater, Assistant Head*



...nature school sessions enable children to grow and develop in their own time...



...children encouraged to risk assess their own activities...



...outside whatever the weather...



# News from the Churches

## Parish Church of St. Mary the Virgin

Rector: Hilary Young	Rectory, 3a Stocks Lane	650 587
Churchwarden: Nick Ingles	9 Yew Tree Close, Potton	07828 934 003
Reader/Churchwarden: Chris Miller	11 Bunyan Close	650 779
Parish Administrator:	gamlingaychurch@outlook.com	

# St. Mary's Letter for December

*Dear Friends,*

YET AGAIN, please note that there may be changes and additions to plans published here, so interested readers should consult the weekly Newsletter of the Benefice (which includes Hatley and Everton) for the most up-to-date information, available on our website and on email by request.

Before looking forward to Christmas, there are some celebrations to remember that have just taken place, including our All Saints and Annual Memorial services.

**All Saints Sunday** happened to be Halloween this year, (Eve of All Hallows) – as the 1<sup>st</sup> November fell on Monday. I can't remember this happening in the past, though some clever persons will be able to tell me when it last did. Anyway it gave us the perfect opportunity to celebrate Jesus, light of the world, shining in darkness,

the one whom the Saints all serve, on the day when the secular world has a rather different focus.

At St. Mary's a small gathering of children dressed up (not as witches, ghosts or similar scary things) enjoyed a Holy Pumpkin Lantern hunt in St. Mary's churchyard, seasonal crafts and games and some party food in the Church Hall, before moving to church for a short service celebrating the Baptism instruction to 'shine as a light in the world to the glory of God the Father'. We shared our decorated jam jar and pumpkin lanterns in church, lit candles and sang together, and a good time was had by all. We express our grateful thanks to Sarah and Sandra for the work they put in to making the party for the children.

It was this sort of celebration that was intended when All Saints was moved to this time of year. All Saints

as a festival was started by a seventh century pope, when dedicating the Pantheon in Rome on 13<sup>th</sup> May, designating that date as a public holiday. It is believed All Saints was moved to 1<sup>st</sup> November as that was the Celtic New Year, celebrated with some of the customs now associated with Halloween – a later Pope wanted Christians to counter that pagan festival, and now it's back.

Our **Annual Memorial Service** took place on All Saints night rather than on the following day (All Souls) because of availability of personnel. It was a small and intimate gathering, perhaps missed by some as our publicity was unavoidably restricted, for which herewith profound apologies. Our prayers and thoughts were, and continue to be, with all those who have been bereaved, remembering this first year in particular, but also praying with those for whom

## Services in Advent and Christmas

All are expected to be available live on Zoom, but at least some of the intended Gamlingay services may have to be relocated from church.

### November

#### Sunday 28<sup>th</sup> Advent Sunday new Church Year begins – God's People

- 8.00am BCP said communion at Hatley St George
- 9.30am Benefice Advent Sunday Eucharist and Celebration of Lay ministers
- 4.00pm Benefice Advent Carol service at Everton

### December

#### Sunday 5<sup>th</sup> Second in Advent

- 9.30am: All Age Communion at Gamlingay
- 11.15am Parish Communion at Everton

#### Sunday 12<sup>th</sup> Third in Advent Christmas Fayre

- 9.30am: Family-Friendly Eucharist at Gamlingay
- 4.00pm Communion Service at Everton

#### Sunday 19<sup>th</sup> Fourth Sunday in Advent

- 9.30am Family-Friendly Eucharist at Gamlingay – Church Nativity Play
- 4.00pm Christmas Carol Service at Everton
- 6.00pm Christmas Carol Service at Gamlingay

#### Monday 20<sup>th</sup> Christmas Carol Service

- 7.00pm Hatley St George (may require tickets)

#### Friday 24<sup>th</sup> Christmas Eve

- Christingle Services at Everton and Gamlingay to be confirmed
- Gamlingay Nativity Procession precedes Gamlingay Christingle Service
- 11.30pm First Communion of Christmas (Midnight Mass) Gamlingay

#### Saturday 25<sup>th</sup> Christmas Day

- 9.30am: Christmas Morning Communion Gamlingay
- 10.00am Christmas Morning Service Everton

anniversaries fall at this time.

Advent begins a new church year on 28<sup>th</sup> November. The intention was to have a settled service pattern starting, for use in the coming Church Year, beginning on Advent Sunday. A survey is being devised with the intention of enabling decisions to be made on this pattern, taking into account the circumstances and needs of as many potential worshippers as possible.

However, the survey to inform decisions had not been written at the time of going to press, and the news of work starting at Gamlingay (see below) is likely to disrupt the pattern anyway, so we had agreed to continue with the interim pattern until the New Year. However, the following news may affect that.

### At Last!

**The Good News** – As I write the long-awaited project is about to start (14<sup>th</sup> November) on the church building of St. Mary the Virgin, Gamlingay. The roof is to be repaired after theft of lead, with repairs to other parts of the roof and the fitting of an alarm. The project also includes urgent repairs to crumbling masonry, particularly around the windows, which will all be made sound and broken glazing repaired.

This has been made possible by the offer of a very substantial grant from the National Churches Trust (NCT). We have been given a share of a limited grant which recognises church buildings of particular vulnerability and valuable heritage. This grant, combined with other grants and the generosity of our community with the work of the Friends of St. Mary's will enable this ancient church building in Gamlingay to be made sound. There is much else that needs to be done, but this is a very exciting start. Given the current situation, we count ourselves blessed to be, at last, able to move on further with the repairs the building has been crying out for (the buttresses and parapets were phase one).

The other side of this is that having to wait for grant decisions, we are now into winter when work is more likely to be disrupted by the weather. This, coupled with the grant funders' stipulation that the project must be 80% completed and invoiced for by March means that there is severe time pressure on the works, which will turn the interior of the church into a building site. For this reason it will be difficult or impossible to use the

building for much of the time, as each time the church is cleared for use adds time and money to the project, which is expected to last a minimum of 20 weeks.

SO – watch the weekly newsletter and social media for updates; our main fund-raiser over the weekend of 12<sup>th</sup>/13<sup>th</sup> December is likely to be affected, as will some, possibly all, of the Christmas services, which were planned to be as on page 10.

Much remains to be confirmed at time of writing, in particular we have an ambitious plan to improve our carbon footprint, putting solar panels on the south nave roof. We have yet to establish the viability of this project, but it is exciting to have the possibility and some funding in place for something that fits with our mission to be as 'green' as possible. This project is separate from the roof project, but will hopefully run alongside, to make best use of the scaffolding.

Although we are just beginning, I want now to say a huge THANK YOU to everyone who has worked so hard to get us to this point. Alec

Hissett and Chris Smith deserve special mention: although they haven't done all the work, theirs has been a huge contribution – Alec's work has secured grant funding. Chris is leading the project group on behalf of the PCC, and has had a major role in fund-raising and making things happen.

*Love from Hilary*



## G & H Seamer

Funeral Directors - Est.1903

Family owned and independent Funeral Directors providing sensitive, dignified care for your loved ones. We provide a 24 hour service, home visits at the request of the family and private Chapel of Rest.

Pre-paid Funeral Plan available

Tel: 01767 680519

[www.ghseamer.co.uk](http://www.ghseamer.co.uk)  
[office@ghseamer.co.uk](mailto:office@ghseamer.co.uk)  
47 High Street, Sandy, Beds SG19



### ST MARY'S CHURCH HALL

The Emplins, Gamlingay



Now available on Saturday mornings  
Ideal for dancing classes, children's clubs etc.

£10 per hour  
Please contact: Lindy Gorton  
Tel: 01767 - 650 581

### Hatley Village Hall

Available for hire every day  
8.30am to midnight

A clean, pleasant and roomy hall - can seat 85, with good acoustics  
One user per session; new kitchen and boiler  
Ideal for meetings and parties  
Large car park

£11.00 per hour (£8.50 Hatley residents)  
To book, please contact Kim Wilde on 01767 650 596 [www.hatley.info](http://www.hatley.info)





# THE GAMLINGAY

## FOOD PROJECT

HOME OF  
COMMUNITY FRIDGE



CONTACT  
[ADMIN@GAMLINGAYFOODPROJECT.ORG](mailto:ADMIN@GAMLINGAYFOODPROJECT.ORG)  
07307 349525

BROUGHT TO YOU BY  
ST MARY THE VIRGIN CHURCH  
AND GAMLINGAY BAPTIST CHURCH

IN PARTNERSHIP WITH  
CAMBRIDGE SUSTAINABLE FOOD  



# News from the Churches

## Gamlingay Baptist Church

Stocks Lane, Gamlingay, Sandy SG19 3JR

Lead Pastor: Reverend Adrian Semerene [adrian@gbchurch.org.uk](mailto:adrian@gbchurch.org.uk) 07472 350 860

Church Secretary: Mike Roberts on 651 179 Church Office: 651 519

# Message for December

*“God never gives someone a gift they are not capable of receiving. If he gives us the gift of Christmas it is because we all have the ability to understand and receive it.”*

*Pope Francis*

THIS time last year we were all busy planning our Christmas gatherings with friends and family, only to face another lockdown which changed our plans entirely. Carol services cancelled, or pushed online, family meals skewed or cancelled altogether! It was hard... it was painful... it was sad! I remember so many people saying, ‘It doesn’t feel like Christmas,’ or ‘Christmas is cancelled this year,’ and if I am honest... it was hard not to fall to such thinking. BUT, the truth is... while celebrations may not have been what we expected, the reason for the season wasn’t affected by a lockdown, or cancelled church services, or meals gone awry. The reason for the season was still very much at the centre, whether we saw it or not, whether we believed it or not.

So, this year, as we start gathering our decorations, putting lights on the trees, preparing the stockings, getting our shopping lists ready and preparing to celebrate Christmas again, I wonder

what our priority for the season is? While we are all hoping (and some of us praying) that we won’t see another lockdown and that we’ll be able to proceed with all of our plans this year, what happens if we are locked down? What happens if the massive spanner we don’t want thrown in is well and truly smashed into the works? Then what? Will Christmas be cancelled again? Will our gifts not make it to those we intended them for? Will Christmas simply be over? – NO... it won’t!

Please don’t misunderstand me, if we aren’t able to gather for our GBC Christmas Special on the 18th, if I’m not able to eat with my family, and visit my friends, and gather on Christmas day with my church brothers and sisters, I will be heartbroken... but Christmas won’t be cancelled. You see, Christmas, beyond the presents, the songs, the lights, the food (all of which I love by the way), beyond all those things, is about celebrating one of the

single most world changing moments in history, the birth of Jesus.

Christmas is about celebrating the fact that God so loved the world, he sent Jesus to come, in the most humble way possible, to live among us, to guide us, to eventually die for us, to bring us freedom, forgiveness, love, grace, mercy.

Now, I know, that some of you reading this may be thinking, ‘Adrian, it’s not that big a deal, just enjoy the food and presents, and get lost in the twinkly lights.’ But, you have to ask yourself: how is it that the birth of one baby could bring such a drastic influence to the world, to not just go down in the history books for his life, but to continue a movement of followers thousands of years later, across the world, beyond races, genders, ethnicities, culture? What is this baby all about? You see, for me, and billions of others around the world, Christmas is a celebration of this baby, Jesus, which brings all meaning to life and existence. That’s heavy, I know... but maybe, this season, regardless of what happens, you might want to explore or remember, what the real reason for the season is all about. Want to do that with someone? We’d love to welcome you, and share with you, and celebrate with you. So why not get in touch or come hang out?

If I don’t get a chance to say it to you in person. Merry Christmas. I pray it be an awesome season for you.

Many blessings,

*Rev Adrian Semerene*

Lead Pastor: Gamlingay Baptist Church  
[adrian@gbchurch.org.uk](mailto:adrian@gbchurch.org.uk) | 07472 350860

Twitter: @asemerene

Instagram: @asemerene

**The Backroom Cafe**

Every Monday  
9:30am - 3:00pm

Every Third Sunday  
10:00am - 4:00pm

Gamlingay Baptist Church

Tea, Coffee, Cakes, & Wi-Fi  
All free!

For more information contact  
[backroomcafe@gbchurch.org.uk](mailto:backroomcafe@gbchurch.org.uk)

**GAMLINGAY NEED HUB**  
THE PROJECT  
EVERYONE HAS THE RIGHT TO FOOD.

YOU CAN PARTNER WITH US TO PROVIDE REGULAR FOOD PARCELS TO THOSE IN NEED LOCALLY.

LOCATED AT THE ALMHOUSE CHAPEL, 62 CHURCH STREET

CONTACT  
[ADMIN@GAMLINGAYFOODPROJECT.ORG](mailto:ADMIN@GAMLINGAYFOODPROJECT.ORG)  
07307 349525

BROUGHT TO YOU BY  
ST MARY THE VIRGIN CHURCH AND GAMLINGAY BAPTIST CHURCH

IN PARTNERSHIP WITH  
CAMBRIDGE SUSTAINABLE FOOD

## GBC Diary December 2021

THE congregation can sing during services whilst wearing face coverings, which are still advised when in the church.

Please do check our website or contact the office for updates.

### Sunday Services

**Communion** is held on the first Sunday of the month.

**Hymnal Praise** at 10:00am

**Worship Service** at 10:45am

Services live-stream on  
[www.gbchurch.org.uk/latest-talks](http://www.gbchurch.org.uk/latest-talks)

### GBC Kids & Youth Groups

Meeting every Sunday at 10:45am for age-appropriate activities.

### Third Sundays each month will be different!

The Backroom Café will open 10.00am to 4.00pm.

Check weekly news, website or contact office for timings and details.

### Small Groups

Meet every week. Get in touch with [office@gbchurch.org.uk](mailto:office@gbchurch.org.uk) for more information.

### The Backroom Café

Open every Monday, 9:30am to 3:00pm.

Meet with friends, have a chat and enjoy good coffee and cake.

**NB:** Café will **not** be opening on 27<sup>th</sup> December.

### Ladies' Brunch

No meeting in December

Please join us for:

### Christmas Special

A time of songs, carols, reading and Nativity

**Saturday, 18<sup>th</sup> December 6.30pm**

### Christmas Day Service

**Saturday, 25<sup>th</sup> December 10.00am**

For more details please contact the office on 651 519 or email: [office@gbchurch.org.uk](mailto:office@gbchurch.org.uk)

Please consider following us on social media to keep updated with all our events:

Facebook.com/

GamlingayBaptistChurch

Instagram: [@gb\\_church](https://www.instagram.com/@gb_church)

Twitter: [@gb\\_church](https://www.twitter.com/@gb_church)



## Gamlingay Christmas Lights Competition

Join us in celebrating christmas this year after a somewhat up and down 2021. Decorate your windows and send a picture of your entry to [rainbow.committee.gamlingay@outlook.com](mailto:rainbow.committee.gamlingay@outlook.com) for a small donation of £2 per entry to Rainbow Pre-School Gamlingay Lets get creative Gamlingay! Prizes to be won!!

Entries to be sent by  
Thursday 23rd December 2021



**GAMLINGAY  
COMMUNITY  
FRIDGE**



OPEN MONDAY - FRIDAY  
10 AM - 12 PM

- HELP REDUCE FOOD WASTE!
- SHARE FOOD YOU'VE GROWN!
- ALL FOR FREE!



LOCATED AT THE ALMHOUSE  
CHAPEL, 62 CHURCH STREET

**THE GAMLINGAY  
FOOD PROJECT** CONTACT  
[ADMIN@GAMLINGAYFOODPROJECT.ORG](mailto:ADMIN@GAMLINGAYFOODPROJECT.ORG)  
07307 349525

BROUGHT TO YOU BY ST MARY THE VIRGIN CHURCH AND GAMLINGAY BAPTIST CHURCH IN PARTNERSHIP WITH CAMBRIDGE SUSTAINABLE FOOD

## GARY HARE

Property Improvements

All aspects of carpentry,  
internal/external doors  
Real wood/laminate floors  
Bathrooms  
Kitchens designed, supplied, fitted  
Ceramic wall and floor tiling  
External and internal painting,  
decorating and wallpapering  
Complete property refurbishment

Telephone: 01767 651 821  
Mobile: 0777 397 3420

City and Guilds  
25 years experience

# My marathon mission!



DON'T you always watch the London marathon on the telly and marvel at the crowds taking part – and finishing – and assume it was something for other people? I remember telling a friend we should enter. It seemed laughable. Then I did it – I was in the race!

So, now I know what it's really like, I will share the secrets and offer you my best advice as a proud medal holder.

## Tip #1. Do it with friends.

I had a running pal until the month before, I dreaded finishing the training alone – I have a hopeless sense of

direction and was sure I'd get lost and eventually be discovered among other roadkill.

## Tip #2. If relevant and remotely possible, do period maths before entering.

Yes, it happened. Unbelievable isn't it? Instead of celebrating at the halfway point, I was kicking myself for deciding to take food instead of tampons. Arguably I could have taken both, but pocket space was at a premium so hard decisions had to be made.

## Tip #3. Accept transformation into elite athlete is unlikely.

This pill is hard to swallow for the unrealistically ambitious among us. Getting fit is realistic, winning the whole race, less so (but it's still fun when friends wish you well with "hope you win!")

## Bonus Tip. It's a party and everyone's invited!

Prepare yourself for the biggest, best street party with music, dancing, banners and cheering! If you're lucky, you'll realise, just in time to run back to them, that it's your friends yelling themselves hoarse for you – and they don't mind sweaty hugs mid-marathon!

In short, it's a long run. But, in the long run, it's worth it, with bells on.  
*Harriet Gould*

# Christmas ...



*By reducing the use of toiletries it will reduce water pollution and consumption of single-use plastics.*

IN December many people will be looking forward to receiving lots of "smellies", those preparations with which we pamper ourselves. Whether it is products to scrub us down, grease us up, or simply make us smell just like anyone else who has spent money on that particular perfume, it seems that Christmas is when many people stock up with bathroom products. However, a growing number of people have stopped using soap and started trusting bacteria to do the job instead.

David Whitlock, for example, has not showered or bathed for 15 years, yet he does not have body odour. His primary motivation is to encourage friendly microbes to live on him in symbiotic harmony. The bacteria get to feast on the ammonia from his sweat and he gets low-maintenance, balanced skin.

According to an article published last year, he recalls that it was kind of strange for the first few months, but after that he stopped missing it. "If I get a specific part of my body dirty, then I'll wash that specific part" – but never with soap." Because as well as germs, soap gets rid of the skin's protective oils and alters its pH level. Which for many people leads to dryness and a need for oils and lotions to replace that which has been removed.

By contrast, the trillions of microbes (bacteria, viruses and fungi) that make up the skin microbiome, protect us from pathogens and keep us healthy by making vitamins and other useful chemicals. Think about eczema, acne and problems associated with dry skin...

For details about advertising your business please email:  
[adverts@gamlingaygazette.uk](mailto:adverts@gamlingaygazette.uk)



**BIGGLESWADE  
SANDY  
LIONS CLUB**

## Santa will be appearing this Christmas!

THE elves have been hard at work preparing the sleigh for Santa.

The reindeer have been booked to pull it and Santa is getting ready to visit again this year.

He will be at Tesco in Sandy on 3<sup>rd</sup> to 5<sup>th</sup> December, ASDA in Biggleswade on 11<sup>th</sup> to 13<sup>th</sup> December and Sainsbury's in Biggleswade on 18<sup>th</sup> to 20<sup>th</sup> December.

Other venues will be announced as soon as they are confirmed.

**hcpc**  
registered  
www.hcpc-uk.org

**Wendy Hall**  
WMSCh, MPSPract, DipCTec

## Chiropodist/Podiatrist

Moor Farm Cottage, Potton Road,  
Abbotsley, St Neots, Cambridgeshire,  
PE19 6TY

Telephone 01767 677 554  
Mobile 07926 355 884

For all kinds of foot problems:  
corns, callus, bunions, nail trims  
all in the comfort of your own home  
or at my surgery.

... do you really need lots of scrubs and “smellies”?

# Is ShamPoo really just Fake Smell?

a healthy skin microbiome could be one of the solutions.

Sarah Ballantyne, a medical biophysicist turned author and lifestyle guru known as the Paleo Mom, has been an advocate of living in a more “stone age” way. According to *The Guardian* article she too uses only water to wash, even though she is “at the gym sweating buckets six hours a week”. “I use coconut oil to shave and that’s it,” she says. “Over time, my skin has adjusted. I don’t smell.”

*...dermatologists say there’s nothing wrong with just rinsing...*

Dermatologists say there’s nothing wrong with just rinsing. People who haven’t used any kind of detergent in years are perfectly fine. The skin care issue isn’t that people need more moisturiser, it’s that they need to stop removing moisture (“natural” oils) from their skin by washing it.

David Whitlock’s inspiration came from researching why horses roll in dirt. His conclusion? They do it to top up their ammonia-metabolising bacteria, making the skin less susceptible to infection.

Since 1950, we have gone from bathing once a week to every day. And this strange behaviour has changed our skin microbiome and is most probably behind the rise in inflammatory skin diseases. However, scientific evidence is lacking in this field. At this time there are no studies demonstrating the negative effects of soap or over-washing, which is understandable. The companies making those incredibly expensive body care products invest in research which shows how by putting their products on your skin you will look years younger, they won’t invest in research which concludes, “you know what, just leave your skin alone, you’ll be fine, you’ll look fine”.

But there is still one area where most agree that soap is still useful. Whilst washing your hair and your body has very little to do with hygiene, washing your hands is essential to it.

According to Harvard Medical our immune systems need a certain amount of stimulation by normal microorganisms, dirt, and other environmental exposures in order



*...but always use soap on your hands*

to create protective antibodies and “immune memory.” This is one reason why some paediatricians and dermatologists recommend against daily baths for kids. Frequent baths or showers throughout a lifetime may reduce the ability of the immune system to do its job.

And there could be other reasons to lose your enthusiasm for the daily shower: the water with which we clean ourselves may contain salts, heavy metals, chlorine, fluoride, pesticides, and other chemicals. It’s possible these may cause problems, too.

*...daily showers do not improve your health. And they waste a lot of water...*

Daily showers do not improve your health and they could cause skin problems or other health issues and, importantly, they waste a lot of water. Also, the oils, perfumes, and other additives in shampoos, conditioners, and soaps may cause problems of their own, such as allergic reactions (not to mention their cost).

While there is no ideal frequency, experts suggest that showering several times per week is plenty for most people (unless you are grimy, sweaty, or have other reasons to shower more often). Short showers (lasting three or four minutes) with a focus on the armpits and groin may suffice.

## So how does a no-soap regime work?

The key is exfoliation. You can’t just stand under the water and hope for the best. No, you still need to scrub. You’ll just scrub without soap. Use whatever you want – a nice washcloth, a loofah, a body brush, a mesh scrubber-thingy, whatever works. But scrub down.

Remove that top layer of dead and dying skin cells. Unless you’ve been rolling in axle grease or something, whatever incidental dirt you have on your body will slough right off.

The first few times you do this, you might not feel clean while you’re actually in the shower. You’ll have to trust that you are clean. Hop out, dry yourself off, and wait 15 minutes. You’ll soon feel as clean as normal, but without the tight skin feeling that some people associate with bathing or showering. Of course if your job (or hobby) involves grease or paint or other things that aren’t water soluble, you might legitimately need soap to get clean. But most of us seldom get so dirty that we need soap.

## Frequently Asked Questions About Specific Body Parts

1. What about my armpits?  
Nope, no soap necessary. Hot water and a good washcloth should be just fine.
2. What about my...private parts?  
Same answer – just give everything a good, soap-free scrub. You should have no problems.
3. What about my feet?  
If you’re prone to smelly feet, it’s very possible that no good will come from denying you your daily dose of antibacterial soap. But remember, your foot odour may be coming from shoes and socks, so take care to change them when possible.
4. What about shaving my legs?  
If you’re already using some kind of shave cream on your legs, you can just keep doing what you’re doing. If you’re lubricating with lathered soap, you’ll need to make some changes.

You can also stop using shampoo. You will probably find your hair seems to become more oily in the first week or ten days but persevere and your hair will normalise.

One big change you might notice, if you currently use scented soaps and body washes, is that your skin will smell like skin—not like night-blooming jasmine or cucumber coconut. But skin is not an unpleasant smell at all. Try it and see, and feel pleased that in doing so you will reduce water pollution and your consumption of single use plastics.

IN October some GamArch members visited Flag Fen Archaeology Park near Peterborough where in the 1980's a wooden causeway was found preserved in the peat. This was constructed in the Bronze Age, about 3,500 years ago, and ran across the marshy ground between Fengate and Northey.

The causeway is about 1km long with a wooden platform in the middle and is made up of more than 60,000 timbers which were preserved by the anaerobic conditions of the fen. Some of the wood used, such as oak, would not have been available locally so would have been brought in from elsewhere.

As well as the timbers, archaeologists found many items which appeared to have been deliberately deposited in the water surrounding Flag Fen: these finds included gold jewellery and weapons such as swords and daggers, some of which had been broken before being deposited. There is a museum on the site where some of the finds are on display.



## GamArch at Flag Fen

Once such timbers are exposed to the air they begin to dry out and will then very quickly disintegrate so most of the causeway is under an artificial lake but part of it can be seen in the Preservation Hall (see picture above) where it is kept constantly wet.

On another part of the site a number

of Bronze Age log boats found at Must Farm (an archaeological site about 2km from Flag Fen which was excavated more recently) are being preserved by impregnating the wood with water-carried wax, a technique that takes years but which stops the wood from drying out.

Flag Fen is an interesting site which is well worth a visit and not too far from here, there is ample parking and a small cafe.

Entry fees are £6.00 for adults, £4.00 for children and concessions, group tours and educational visits can be arranged and it is open 10.00am to 4.00pm all year round.

More information on: <https://peterborougharchaeology.org/peterborough-archaeological-sites/flag-fen/>



*A bronze age sword found at Must Farm. Courtesy of Historic England.*

 **Reflections**  
 Est. 1994

**We've been cleaning windows in your area for over 25 years.**

Window cleaning • Gutter cleaning  
 Conservatory roof cleaning

 07808 064 644

 01480 476 179

**Ask about how you can get a FREE window clean**

 **PLUMBING & HEATING**

Get in touch  
**07792698093**

**ALISTAIR JOHNSON**

- PLUMBING
- HEATING
- BATHROOMS
- MAINTENANCE



[info@ajplumbing-heating.com](mailto:info@ajplumbing-heating.com)



# Gamlingay Walks

Please share with other readers your favourite walks in, through and near the village.

Supply clear directions, remembering that some people may be new to the area, so don't take local knowledge for granted. If possible please supply photographs of interesting views or potentially confusing junctions along the way.

Ideally circular walks should start and finish either at the Eco-hub on Stocks Lane or "the crossroads" (Mill Street, Church Street, Green End, Waresley Road.)

## Walk 06

### A Wood Loop

*This circular walk from the Eco Hub dips into Gamlingay wood and out again, with little to fear from the woodland folk who may make their homes there. Wear your boots if the weather is wet. And if walking in autumn be prepared enjoy nature's bounty! How many fungi (1) can you spot?*

**Duration:** 1 hour 20 minutes

**Distance:** 2.8 miles

#### Terrain:

Firm paths and tracks but will be muddy if wet, not suitable for buggies.

#### Start:

The Eco Hub, Stocks Lane.

- 1 Leave the Eco Hub and walk alongside to the playing field then down Millbrook Meadows. Pass Poppy-fields estate on your right. Follow the path to Station Road and cross when safe.
- 2 Follow the path through Lower Field and cross the Block Bridge.
- 3 Pass the Peace Bench and follow the path as it bends right and skirts the cemetery, then turn right into the cemetery and exit the top gate onto Church End.
- 4 At the road, by the telephone box, turn right, past Dutter End, and head out of the village on Long Lane until you come to the farm track on your left running alongside the allotments. Take the track.
- 5 At the T-junction turn right for two hundred yards or so, then take the path on your left, running between the trees up hill towards Gamlingay Wood.
- 6 At top of path turn right, go through gate into the wood, then follow the path to your left, stopping if you wish at the covered information point. (2)
- 7 Then press on, along the track until you come to a new clearing. (3) Cross the clearing and continue on the track until it is intersected by a

broad ride. (4) Turn left along the ride. You might spot the remains of a woodland-fairy's house.

- 8 Keep a look out for a bench on your left with a dedication plate on it. (5) Follow the track that branches off left at this point.
- 9 Stay on the track until you come to the post, at the edge of Narnia (6), and can see out of the wood.
- 10 At this point you can turn left and walk the short distance back to the gate you entered by, or you might wish to do as many others have and cross over the ditch and exit the wood.
- 11 Turn right and walk along the front edge of the wood until you reach the permissive path leading down hill and back towards the village.(7)
- 12 At the foot of the hill turn right, briefly onto Gray's Road then left down Avenells Way. Follow through until you come to Church Street.
- 13 Turn left then cross over and right on Stocks Lane, pass the fire station and progress until you arrive back at the Eco Hub.





# Historyman

by Nick Bruce

## Winter snow

IT seems Gamlingay is one of the last villages in the country where snow falls to any great extent, but over the years we have certainly had more than a dusting at one time or another. For December we look at the village in the cold snowy spells that have grasped Gamlingay in its past and on a few occasions cut it off from the outside world.

These pictures dating from 1927, and a few others, were taken by the Ellis and Phillips families who catalogued the village a great deal over the years. They lived in Merton Grange and were often seen out with their cameras recording village life.

These pictures were given to me by Dr A Ellis back in 1992 to use and show the times of village life, I was allowed to copy others for the same use.



**Pic 1:** The Women's Institute building in Waresley Road, winter 1927. The deep snow drift being cleared by the Ellis family.



**Pic 2:** The flooded Spital Pit froze over and was used for skating by the local children and at least one speed skater practised here for later races on the frozen Ely Fens.



**Pic 3:** The snow along Long Lane in 1961 was high enough to close the road until the snow ploughs and diggers could clear a way through. You can just see the church in the distance.



**Pic 4:** Heath Road cottages, taken in 1927, with Ebenezer Croot and his daughter, Madge, posing for the picture after helping clear the snow away from the fronts of the cottages.



**Pic 5:** Deep snow in the winter of 1956 and a motorist digging his car out of a drift just past the last houses in Church End.



**Pic 6:** The Two Brewers public house taken in deep snow in 1935. The Two Brewers stood along Potton Road on the last curve as you leave the village and is now a private house.



**Pic 7:** The Ellis and Phillips families on the road just outside the Cinques coming from Gamlingay in 1927. People had to clear the snow by hand because the horse drawn snow ploughs were needed for the main roads.



**Pic 8:** Nearly to the Cinques as you can see the houses behind the people digging to clear the roads, again in 1927.

*If you have any pictures from Gamlingay's past that you can lend me to copy for the Gamlingay Collection please either phone me on 07925 119 346 or email nb777@btinternet.com*



**Pic 9:** Snows over Gamlingay Vineyard in the winter of 1978, with the snow lying eight inches deep and sticking half an inch thick to the vines. Although no work could be done outside there was always plenty to do inside with the wine making.



**Pic 10:** This thatched cottage on the edge of Woodbury Estate, which still stands today, underwent an extensive refurbishment in the early 1970's just after this picture was taken. The thatch on the roof was in very bad condition and a lot of damage was done that winter because of bad weather.

I hope you have enjoyed your look at Gamlingay in the deep snow. Those who were here then will remember digging their way to the path or road.

The worst drifts were on the open roads, especially to Potton and Hatley, where the winds would drive the snows up against the hedges and the drifts would last for weeks.

## The planet of the apes

This is the planet of the trees.  
Descended apes like you and me  
lived by their generosity.

And having burned and hacked them down,  
we stand on baked or sodden ground,  
our choice – whether to scorch or drown.

We glimpse the truth: discovering fire,  
this ape lit its own funeral pyre.

Roddy Cowie

# The climate emergency in our region

## Combined Authority Commission's report now published

The Cambridge & Peterborough Combined Authorities Independent Commission on Climate has now published its full report and recommendations, titled *Fairness, Nature and Communities: addressing climate change in Cambridgeshire and Peterborough*.

This final report builds on the 31 initial recommendations presented in the interim report in March 2021 and, having consulted widely with people and organisations from across the region, focuses on adapting to climate risk, nature and water, business, and a fair and inclusive transition for individuals and communities.

The report clearly identifies that, just as it is on a global scale so it is locally – those who are most vulnerable continue to pay the greatest price and it highlights compassion, co-operation and community, “the three C’s”, as being key to tackling this inequality.

The report says “Many of the risks

to the UK from climate change are particularly acute in Cambridgeshire and Peterborough: the risk of flooding, very high summer temperatures, water shortages, and damage to the natural carbon stores in the deep peat of the Fens. We all need to act, and we must act now, to avoid the most damaging aspects of climate

*...compassion, co-operation and community are key...*

change. If we act in the right way we can also deliver benefits and opportunities, including new jobs in low carbon industries, safer and more comfortable homes and workplaces with lower energy bills, better air quality and more green space and access to nature, improving our health and well-being.”

The report highlights that as we take some massive transformative actions to mitigate the worst effects of climate change, the transition

must be just and equitable.

In the CPCA area, emissions per capita are almost 25% higher than the national average, including emissions from Fenland peat as it dries out and emits stored carbon due to climate change.

The report calls for more power for local authorities to act, identifying that “most of the levers to reduce emissions lie with the national Government.” It calls for a Climate Cabinet to be formed by the leaders of the Combined Authority which would develop a Climate Action Plan “including a financial plan, with agreed targets and monitoring.”

The full, final report, detailing some of the probable actions that will likely be impacting residents, businesses and communities may be downloaded from: <https://cambridgeshirepeterborough-ca.gov.uk/news/climate-commission-calls-for-fairness-and-equity-in-tackling-the-impacts-of-climate-change/>

## Local company pioneers re-manufacturing scheme

### Reducing the amount of e-waste going to landfill

IN *The Gazette* last month we wrote about how everyone can make a difference, indeed needs to make a difference in these Climate Emergency times.

We have now heard from Gamlingay based design consultancy, F Mark, as it works with the lighting industry to launch a new national sustainable lighting scheme, the Regen Initiative.

The Regen Initiative brings together a collective of services to deliver a solution for businesses interested in improving their environmental impact.

The process takes existing lighting fittings, used in industry and business, and re-manufactures them, turning them into environmentally more kindly items.

Simon Fisher, co-owner of Gamlingay-based F Mark Limited, conceived the idea during the first COVID lockdown in 2020. F Mark provides strategic analysis and concept design, through to full mechanical design and engineering for the Regen Initiative.

Project partner COCO Lighting is an emergency lighting specialist and is providing the manufacturing, testing and delivery of the re-manufactured lighting products

Also included in the Regen Initiative is Cambridgeshire based Net Zero International, who will provide carbon analysis to assess the reductions that can be achieved by reusing and re-manufacturing lighting products instead of buying new ones.



*Fluorescent fittings being converted to LED.*

“We’re at the start of something new for the lighting industry and we’re taking an holistic, project-based approach, helping to ensure reduced product maintenance, longer product life and we’re reducing the amount of e-waste going to landfill. It is a win all round.” said Simon Fisher.

*[If you are doing something to help the climate emergency, whether personally or on a wider scale, The Gazette would love to hear from you. Ed.]*

# Gamlingay Cubs Activities

THIS has been a mixed year for Cub and Scout groups, getting to grips with the many new measures to keep everyone safe. In Gamlingay Cubs we have tried to keep the Cubs occupied trying different challenges and activities.

At the start of the year we couldn't meet face to face due to lock down so we reverted to Zoom sessions, these lasted up until Easter. Working over Zoom has been challenging but we managed to keep going and make progress with the Cubs.

During this time we managed to complete the Our World Challenge badge, with parental support and help, for which we were grateful, we wouldn't have achieved as much without their input. Trying to see some of the detail in the work was the hardest part. I had lots of walks around the village dropping off resources for them to use.

After Easter we were allowed to meet again face to face which meant we could resume our evenings at the Scout HQ. Everyone had a hard time during the spring months so we did as much as we could outdoors. We are fortunate to be able to use the First School field which gives us lots of scope for outdoor Scout activities.

## *...following a trail in Waresley wood...*

At the moment we have a lot of young Cubs so are starting afresh with some basic activities. We have done Tracking, both on the field where they were following a trail and in Waresley Wood where we set some trails and then followed others set by other groups of Cubs.

We did a hike from Everton following the Greensand Ridge, through Woodbury Park up through the Cinques and back to the Scout HQ. We finished the Athletes badge by completing several athletic challenges and achieved the Cyclist badge by learning to control their cycles together with basic cycle maintenance including puncture repairs. We then rode from Sandy through to Willington on the cycle trail.

This can be a challenging evening for them, but it gives a great experience of riding amongst other cyclists, walkers, and dog walkers. They must keep their



wits about them while on the trail. This was a great evening; the weather was kind and a number of parents came along with us.

In September we had an activity day over at the Scout campsite at Bromham. Here they enjoyed an Archery session before lighting a fire and cooking their lunch of hot dogs and bananas with chocolate. The day ended with a session at the pedal cart track.

After the summer break we have been doing the Teamwork Challenge. They have been working in teams to build towers from marshmallows and bamboo skewers, working to move balls from one end of the HQ hall to the other with lengths of guttering without dropping the ball.

We have also been out and about, visiting the circus one evening. This trip was organized by the District to John Lawson's Circus which we all attended and enjoyed a great evening of different circus skills.

We visited the Cambridge Clip & Climb centre for an evening of



challenging climbing activities. There are lots of different types of climbing walls for the Cubs to attempt with varying degrees of difficulty. One favourite was the timed challenge where two identical walls had timers so the Cubs could challenge each other to see who could get to the top first.

There are several sections that make up the Gamlingay & Gransden Scout Group; Beavers for 6 to 8 year olds; Cubs for 8 to 10½ year olds and Scouts for 10½ to 14 years old. Each section is open to girls and boys and meets at the Scout HQ on Cinques Road adjacent to the old First School.

If you are interested in joining in please see the contact details in the Youth Groups section in the Gazette Village Information pages.

Steve Palmer

## **VIOLIN & PIANO TEACHER**

Professional instrumental teacher  
with 35 years of experience  
has vacancies for new students.

Private tuition for all levels including  
preparation for AB exams, performance  
assessments, music theory/aural work.

DBS checked and fully insured.



Contact:

**CARLA ROBINSON**  
DIP RAM, LTCL

Tel: 0777-2012928

email: [gid.carla@gmail.com](mailto:gid.carla@gmail.com)

## **THE CUTTING MILL**

2 Mill Street  
Gamlingay

**01767 650 250**

Andrea, formerly in Potton,  
welcomes everyone

**CELEBRATING OUR  
25<sup>TH</sup> YEAR**

**PROFESSIONAL STYLING**  
for all the family

Find us on Facebook

# Gamlingay and District Gardening Club

Tuesday, 7<sup>th</sup> December 2021 at 7.30pm

Eco Hub, Stocks Lane, Gamlingay

## ANNUAL GENERAL MEETING Christmas Social

### Programme for 2022

*Make a note in your diary*

4 <sup>th</sup> January	<i>Kate Gardener</i> on the "Joys of the National Gardens Scheme"
2 <sup>nd</sup> February	<i>Geoff Hodge</i> on "Growing Vegetables"
1 <sup>st</sup> March	<i>Charles and Jo Mears of Wood Farm in Waresley</i> on "Muck and Magic"
5 <sup>th</sup> April	"The Day of the Day Lilies" with <i>Paula Dyason of Strictly Day Lilies</i>
3 <sup>rd</sup> May	<i>Jim Paine of Walnut Tree Nursery</i> on "Gardening in the shade"
6 <sup>th</sup> September	<i>Dr Ian Bedford</i> on "Gardening for Butterflies"
4 <sup>th</sup> October	<i>Corinne Price of the The Swiss Garden</i> on "The Restoration of a Regency gem"
1 <sup>st</sup> November	<i>Anne and Jack Barnard of Rose Cottage Plants</i> on "Spring bulbs"

Visitors are always welcome

Non-members charge £3.00 per person



## Make a note of the date

FOLLOWING on from the wonderful 2021 Gamlingay Show that we were finally all able to enjoy this year, I am pleased to announce that the **2022 Show** is scheduled for **Saturday, 17<sup>th</sup> September**.

The Gamlingay Show Committee is also committed to support the Climate Emergency Action Plan with the Parish Council.

Sadly 2021 was to be my one and only Gamlingay Show as Chairman, my partner and I have made the big decision to follow our dream of re-locating to Scotland and, if everything goes to plan, we will be moving there in December.

It has been a privilege to be involved and I have loved every minute of it! I leave the Show in the very capable hands of Jayne Dawkins who was Vice-Chair for this year.

We are always looking for new members and I am very pleased that Myra Brunton joined us in the summer. Below is a list of current committee members and their roles so please contact any one of them or myself, if you would like to join. We have a lot of fun and also do our bit to support both pubs in the village during our meetings!

A final thank you to everyone who supported, sponsored and worked on the Show this year and to everyone who came along and enjoyed the fun and sunshine.

Many Thanks

Ginny: 07813 629 354  
ginnyjones2021@outlook.com  
Jayne Dawkins  
Steve Palmer

Chair: Peter Condon  
Vice-Chair: Victoria Critchlow  
Secretary & Classic Cars: Myra Brunton  
Treasurer: Ken Burgin  
Competitions: Lee Deason  
Show Logistics: Diane Reynolds  
Social Media: gamlingayshow@hotmail.com  
New member:  
General Contact:

**Let us transform the quality of your lawn!**

**Aeration Scarification Overseeding & More**

- ✓ Greens up and thickens the lawn
- ✓ Removes weeds and minimises moss
- ✓ Completely safe for children and pets
- ✓ Locally owned and operated business
- ✓ Regular personalised treatments
- ✓ No contract - Direct Debit available

**DIRECT Debit** **Greensleeves** Lawn Treatment Experts

**FREE Lawn Analysis: 01767 651 639**  
www.greensleeves-uk.com • Email: hunts@greensleeves-uk.com

### All Green Landscapes

Mark is an award winning, fully qualified horticulturist with over 25 years' experience in landscaping.

We can provide:

- Patios & Decking
- Fencing
- Planting & Pruning
- Paving & Driveways
- Turf laying or seeding
- Full Liability Insurance
- Fully Guaranteed



For advice or a FREE quotation call Mark

**01767 651126 or 07850397317**

17 Plane Tree Close, Gamlingay

[www.allgreenlandscapes.co.uk](http://www.allgreenlandscapes.co.uk)

# Gamlingay Fireworks

WE WERE thrilled to be able to run the annual village fireworks display again this year. We hope you'll agree that it was a great success and it was wonderful to be able to get everyone together again. We would like to thank everyone who came for showing us your support. As this article goes to print we are still counting our takings but we are confident that we raised a really good sum for the children at the school. Watch this space for some updates on what the money we raise is being spent on.

We couldn't have run this event alone and we would like to thank everyone who lent a hand. In particular, thanks to **Dave Twydell** for his unstinting support as the display continues to evolve – and to **Titanium Fireworks** for coming on board and putting on such an incredible show.

We still can't quite believe how lucky we are to have our Gamlingay show delivered by the same company that does the London New Year's Eve fireworks!!

*...the fireworks had a specially-composed soundtrack inspired by the pandemic...*

You will have noticed this year that the fireworks had a specially-composed soundtrack inspired by the pandemic, created by our very own **Two Lads and a Laptop**: huge thanks to them for creating such phenomenal music to accompany the display.

Thanks also to **The Square in the Air** for the superb laser display and to **MC Jez-O** for building up a great atmosphere ahead of the show.

Behind the scenes we were also supported by so many individuals and organisations across the community: the Co-op donated refreshments and supplies; **Zak Kitcher** donated his time to produce our new banners; and **Claire Twydell** made epic quantities of mulled wine. Thank you! Our food was locally sourced from **Woods Bakery** and **Woodview Farm Shop**, to whom we are very grateful.

Thanks also to the **Co-op**, the **Eco Hub**, **Premier** and **Woodview Farm Shop** for selling tickets, to the **Eco Hub** for use of their facilities and



to **Trevor Daisley** at the school for all his help. We are very grateful to the team from **St John Ambulance** and the **Fire Brigade** for helping make sure everyone stayed safe and well. We were also supported by a fantastic team of **volunteers** on the day who helped us set up and who manned the stalls, sold tickets, picked up litter and kept watch to make sure everything was safe: thank you so much to each and every one of you – the event simply couldn't happen without you. Particular thanks to **Jonny Brett and the football team** for responding to our call for marshals.

Last, but by no means least, we would like to say a huge thank you to **Gamlingay Parish Council** who, to help with the great uncertainties we faced with our display this year, provided us with a very generous grant in addition to use of the playing field. This grant gave us the confidence to go ahead with planning the display despite the challenges we faced, and we are so grateful.

*The Friends of Gamlingay Village Primary*

**GAMLINGAY AND HATLEY  
CAR SCHEME**

## Drivers needed

### An opportunity to help?

*Are you looking for a useful pastime?*

*Do you like driving?*

*Do you have a spare morning or afternoon?*

*Do you like talking to people and want to get out and about?*

...then perhaps you could become a volunteer driver for the Gamlingay and Hatleys Car Scheme, which provides transport for essential purposes to residents of Gamlingay, the Hatleys and surrounding villages.

Our villages have little or no public transport and the car scheme is becoming increasingly well known amongst residents as a valuable support – but the scheme urgently needs more volunteer drivers to continue that support.

Your tasks would be to get residents to their appointments, which might be for doctor, dentist, optician, etc., or community activities – for driving only! You would not be required to do shopping or provide physical assistance.

The scheme is entirely voluntary and flexible to suit your availability, so you would drive on whichever days or hours would be convenient to you, and all mileage driven will be reimbursed at approx. 45p per mile.

The scheme is sponsored by South Cambs District Council. Volunteers must have held a full UK driving licence for a minimum of two years and a DBS check will be provided.

There are no other qualifications required! Just your goodwill!

**Please call for more information, or to sign up.**

**07519 493 701**



### POTTON MOTOR COMPANY

Quality Used Cars with a Professional Service  
Selected used cars bought for cash

With over 30 years experience, I aim to provide you with a professional service.

I stock a small selection of hand picked pre-owned cars, prepared to the highest standard.



[www.pottonmotorcompany.co.uk](http://www.pottonmotorcompany.co.uk)  
Green End Industrial Estate, Gamlingay

To book an appointment please get in contact:  
01767 652869 | 07890 413306

# Councillors' Column

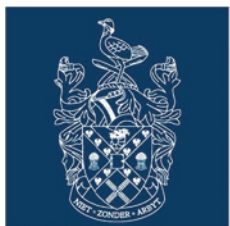
Keeping us up-to-date on South Cambridgeshire District Council and Cambridgeshire County Council matters.

Your councillors are always ready to help.

If you have any questions about the following matters or, indeed, any other council matter that you may need help with, then please do not hesitate in contacting: Bridget Smith, your District Councillor, on 01767 650510 or at [bridget@glockling.com](mailto:bridget@glockling.com) and follow on Twitter @Cllrbridget and on Facebook, and Sebastian Kindersley, your County Councillor, on 01767 651982, at [skindersley@hotmail.com](mailto:skindersley@hotmail.com) or write to Manor Barn, East Hatley SG19 3JA and follow on Twitter @SebKindersley and on Facebook.



Councillor  
Sebastian Kindersley



South  
Cambridgeshire  
District Council



Councillor  
Bridget Smith

## Pavements

Following a complaint from a resident Sebastian met with Highways officers in School Close to discuss the weeds growing through the newly laid pavements there and in Fairfield. When pavements are prepared for slurry sealing they are weedkilled using glyphosate (shortly to be banned, apparently). However, this does not kill deep roots (e.g. dandelions) nor

seeds, especially grass. The dark slurry warms up in the sunshine and – because it is a seal – moisture collects underneath it creating a perfect and safe germinating space where a shoot then pushes through if it can. Hence the weeds. There is, unfortunately, no way of stopping this happening. However, the new pavements should cope and are meant to last for a decade or so before renewal. We shall see!

## Covid update

Gamlingay is a hotspot for Covid infections which is why we have had two pop-up testing sessions at the Eco Hub. Numbers are rising as we write. Please get fully vaccinated when invited and continue to maintain safe practices including mask wearing, keeping rooms well ventilated and social distancing. Please also consider twice weekly lateral flow tests – these are very reliable and pick up people who are asymptomatic before they spread the disease. Local businesses are having to close because their staff are ill or looking after a family member and of course C-19 is well established in schools; doctors surgeries are closed for the same reason.

On 22 October the UK Health Security Agency (UKHSA) published

the latest reproduction number (R) and growth rate of COVID-19 in England. The R value is currently between 1.0 and 1.2 meaning that, on average, every 10 people infected will infect between 10 and 12 other people. The growth rate is currently between 1% and +3% which means that the number of new infections could be growing by between 1% and 3% every day.

## Business support grants

South Cambs Business Support team has just finished administering its final tranche of COVID-related business support funding. We've paid out £1,377,000 in Government funding to 102 South Cambridgeshire businesses since July this year, as part of our Growth Fund. This is a fund supporting businesses who are looking to diversify, scale up or start up in our region. This means that in total we've paid out more than £38 million in Government funding via local business support grants since the onset of COVID.

## Sports facilities in villages

Cambridge City Council and South Cambridge District Council are undertaking the development of a number of Sports Facilities Strategies, overseen by the Greater Cambridge Shared Planning Service and external consultants, Strategic Leisure Ltd.

The purpose of these strategies is to provide a detailed overview of all indoor and outdoor sports facilities, including the quantity, quality, availability, and accessibility of these, to help inform assessment of need and planning for future provision.

## Avenells Way

It is good to see that the surface of the path to Avenells Way has been repaired at the Church St end. A number of people have had trips and falls and hopefully this will now be much safer. We have also installed 'pedestrian only' signs. If you are a horse rider

**HEAT STREET LTD**  
DOMESTIC HEATING SPECIALISTS

Trustpilot ★★★★★  
TRUST YOUR LOCAL FAMILY BUSINESS

- Natural Gas & LPG Boiler Installations
- Boiler Replacements
- Full Central Heating Installations
- Annual Boiler Servicing
- System Powerflushing
- Hot Water Cylinder Installation
- 0% Finance Available
- Price match
- And More....

Call us today  
**07494 389 041**  
[info@heatstreet.co.uk](mailto:info@heatstreet.co.uk)

**0% Finance**  
Options Available

PRICE MATCH PROMISE

Visit our website for an INSTANT QUOTE  
[www.heatstreet.co.uk](http://www.heatstreet.co.uk)

Contact: David Dennis at Heat Street Ltd, 5a King Street, Potton, Bedfordshire SG19 2QT

WORCESTER Accredited Installer | BOSCH | City & Guilds | safe



please do not use this path which is a pedestrian right of way only.

## Greater Cambridge Local Plan Consultation now open

We previously wrote at length about the Local Plan proposals. Just to recap – for the period 2011 to 2041 the Councils are only planning an extra 11,000 homes on top of what has already been in previous Plans (and often is already built!). Of those 11,596 the majority will be in and around Cambridge with some also in the big new developments at Cambourne, Northstowe and Waterbeach. Only 384 homes are allocated in rural sites, for example, in Melbourn and Great Shelford. There are NO sites allocated in Gamlingay nor in any of the other Parishes of the Gamlingay Division. The next stage is a Public Consultation which runs until December 13<sup>th</sup> – so get your skates on if you have a view! You can find it on the South Cambs website.

## County Council finances

Progress is being made towards closing a projected £19.5m gap in Cambridgeshire County Council's budget for next year – despite growing levels of need leading to uncertainty. The Council is calling on Government to provide a more realistic and robust financial settlement for the county as it continues to take a central role in managing the current effects of the COVID-19 pandemic.

The five year plan – agreed by Full Council in February this year – saw a balanced budget in the current year achieved by using some one-off funding, but at the beginning of the year had estimated an initial gap for 2022/3 of £22.5m, with further gaps to fill in succeeding years. The council is identifying further ways to close the gap through savings, generating income and updating estimates of need based on new population figures.

The council is predicting long-term increases and changes in the pattern of demand for its services, linked to the economic after effects of the pandemic – and additional costs are still being incurred as the council takes a central role fighting COVID-19, coordinating the public sector response, managing a complex public health situation and coping with the impact on vulnerable people and children's education.

Besides the pandemic, the other major risks and uncertainties in setting

budgets for 2022-27 include the potential for national policy changes, such as reform of social care funding, the need for a multi-year funding settlement from government, the availability and sustainability of supply chains and resources, and changing patterns of demand for our services that has been a longer-term trend.

## Household Support Fund

Do you need help? Cambridgeshire families in need of extra help during the pandemic will be able to benefit from the new Household Support Fund running until March 2022. We will continue providing help via the Direct Voucher Scheme, which offers parents a voucher for a choice of supermarkets. These vouchers are sent to eligible families automatically using school data and information held by the local authority. If your circumstances have changed please get in touch as you may now be eligible for this support.

## The Queen's Green Canopy

Next year marks 70 years since Queen Elizabeth II took the throne. To celebrate the anniversary and create a lasting legacy, a UK-wide tree planting initiative named The Queen's Green Canopy (QGC) has been established. The scheme involves inviting people to "Plant a Tree for the Jubilee," with everyone encouraged to plant trees in the current planting season and in the next. Sebastian was delighted to be able to help plant two of the first in Cambridgeshire, in Cambridge and Ely, on behalf of the County Council.

Everyone is invited to take part and it is easy to get involved – whether you are an expert gardener or complete

novice, there is something you can do. This includes individuals planting trees on private land, community planting projects, schools planting trees on their premises and businesses setting up tree planting projects with employees. If you are interested please do get in touch.

## Watercourse reinstatement grants

The County Council has agreed to offer grants from a pot of money set up to ensure watercourses across the county are properly maintained. Applications may be made by established community flood groups and parish councils where a watercourse needs to be reinstated, and the riparian owner either cannot be identified or genuinely cannot afford the works to reinstate their watercourse.

A riparian owner is anyone who owns a property where there is a watercourse within or adjacent to the boundaries of their property. A watercourse includes a river, stream or ditch. A riparian owner is also responsible for watercourses or culverted watercourses passing through their land. It is expected that the work to bring the watercourse back up to standard would be one-off in nature, with them being regularly maintained thereafter.

## Papworth to Cambourne

Work has started on a new £1.1m equestrian, foot and cycleway to join up Papworth Everard and Cambourne and this is a reminder that the A1198 road is closed along this section most of the time! So plan accordingly (I didn't) until March 2022.

# DSSelectrical

Residential and Commercial Electrical Installations since 2009

Office: 0800 019 7992

Email: [info@dssselectrical.co.uk](mailto:info@dssselectrical.co.uk)

Web: [www.dssselectrical.co.uk](http://www.dssselectrical.co.uk)

Be sure to check out our reviews on Google - Search DSS Electrical





# GAMLINGAY PARISH COUNCIL

## Gamlingay Guardians

WITH regret, the Parish Council decided to close the Gamlingay Guardians scheme at the end of October.

The staff and volunteers involved gave their very best to the scheme and we would like to extend grateful thanks to them.

It seems that the timing and location for the delivery of this type of service was simply not right.

The pandemic generated a groundswell of community goodwill, with many offers of assistance to those less able in our community, which was fantastic.

Groups and individuals continue to help others in our community, and it appears that people are more willing to ask for a little help when they need it.

There simply seems to be less need for the type of service that the Guardians offered – which is a positive outcome from the difficult times we have all been through.

The rollout of the Guardians scheme was, of course, hampered

by the necessary lack of face-to-face contact due to Covid and it was disappointing not to be able to arrange any of the social events that were originally envisaged.

Despite revising the scheme and reducing the cost substantially, only three members signed up.

This was despite extensive local advertising – leaflets, social media and in the local magazine delivered to every household.

## Beech Tree removal

FOLLOWING the recent fall of a large limb from a landmark Beech tree in St Mary's churchyard, the Parish Council consulted tree specialists.

Regretfully, we have been advised that the tree is diseased and poses an unacceptable health and safety risk due to its size, condition and location.

Sadly, it will need to be felled.

We hope to find a local use for the wood and, in keeping with our Tree Policy, we will be planting replacement trees as soon as possible – locations and varieties to be agreed.



**CAMBRIDGESHIRE & PETERBOROUGH**  
COMBINED AUTHORITY

## CPCA News

CAMBRIDGESHIRE & Peterborough Combined Authority is to take a leading role as the region attempts to counteract the impact Climate Change and a growing population is having on water resources.

The Combined Authority has accepted an invitation to join two significant initiatives which are focused on planning for future water needs across the area.

The Combined Authority will join the Water Resources East (WRE) Ltd. board and will look to play an active part as the independent body, working under the National Framework for Water Resources, developing a long-term water plan for Eastern England.

This will influence the future investment decisions of the water companies.

*...bus services improvement plan to be submitted...*

Members of Cambridgeshire & Peterborough Combined Authority Board have given approval for the submission of a Bus Service Improvement Plan to the Department of Transport at the end of this month.

As part of the National Bus Strategy for England (announced in March 2021), which involved a major change in the way that the bus industry operates, all Local Transport Authorities, outside of London, are required to publish a Bus Service Improvement Plan.

The plan sets out how a Local Transport Authority, which in Cambridgeshire and Peterborough area is the Cambridgeshire & Peterborough Combined Authority, proposes to deliver their ambitious vision for bus travel in the future.

You can find all the latest news from CPCA at <https://cambridgeshire-peterborough-ca.gov.uk/news/>

For details to advertise your business in *The Gazette* please email:

**advertsgamlingaygazette.uk**

## LIBERTY

Conservatories, summerhouses, doors, windows and all related repairs. Quality PVCu and aluminium specialist.

Conservatories	Sash Windows	Guttering	Doors
Orangeries	Casement Windows	Verandas	
Canopies	Bi Folding Doors	Fascias	

For a no obligation quotation

**Matthew Sanders 07976 586 615**

**Tel/Fax 01767 651 815**

**email [msanders471@btinternet.com](mailto:msanders471@btinternet.com)**

Office 81, Cinques Road, Gamlingay, Sandy, Beds SG19 3NR  
A FENSA Registered Company, 10-Year Insurance Backed Guarantee



# Don't fall for it!

Supermarkets haven't specially selected you – the scammers have!

FAKE marketing surveys promising gift cards of up to £100 for filling them out have been impersonating the likes of ASDA, Morrisons, Tesco whilst a Primark one offers a £1,384 gift card.

Fraudsters have been posing as these well-known supermarkets in order to gain your trust and send you on to potentially dangerous websites.

The emails are designed to make you follow the link by promising a large reward in return for doing very little – a common phishing tactic.

The messages might encourage you to 'activate the delivery' in order to receive the promised reward. But clicking through on scam emails like these is only likely to send you on to potentially dangerous websites that could compromise your personal information and/or bank details.

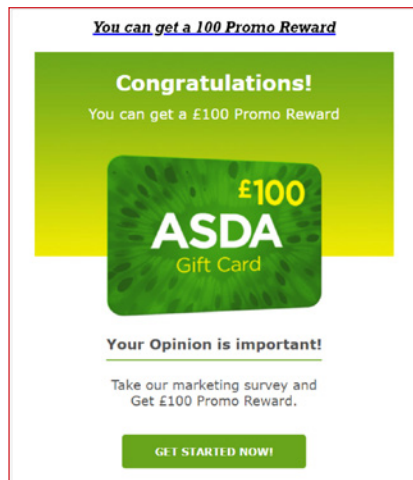
The messages may attempt to deceive you by including 'your account information', which may appear legitimate at first glance, but on closer inspection only contains information that's part of your email address.

Several of the attempted scams give themselves away by poor English: for instance "...your Shopping experience ... and we Will offer you..." (wrong capitalisation).

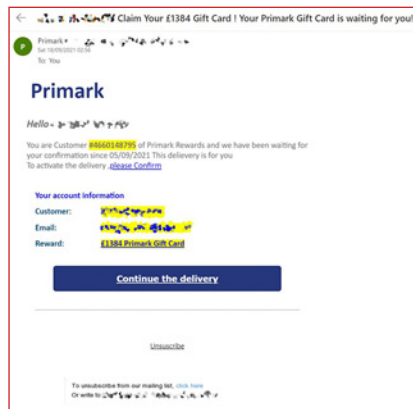
Think you may have lost money to a scam email?

Immediately let your bank know what's happened. You can forward phishing emails to [report@phishing.gov.uk](mailto:report@phishing.gov.uk).

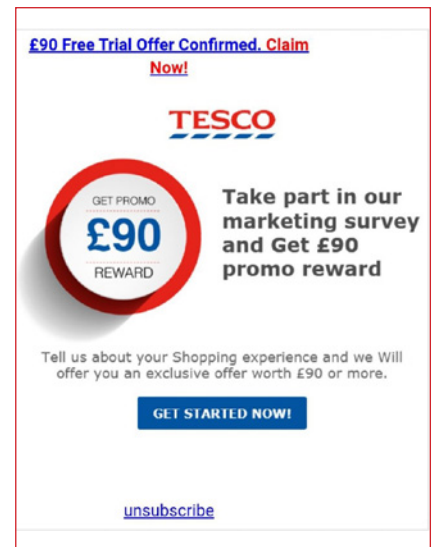
## Emails impersonating UK Supermarkets and High Street Stores



*This email is designed to make you follow the link by promising a large reward in return for doing very little – a common phishing tactic. But this 'survey' is not being run by ASDA.*



*As is often the case, the phishing email is promising big rewards for doing very little - in this case 'Primark Rewards' in the form of a gift card for £1,384 – saying that you need to 'activate the delivery' in order to receive them. But clicking through on scam emails like these is only likely to send you on to potentially dangerous websites that could compromise your personal information and/or bank details.*



*The Tesco phishing email is just like the Morrisons one with different logos. Tesco has a dedicated email for customers to forward phishing emails to: [phishing@tesco.com](mailto:phishing@tesco.com). It also has a guide on how to identify scam emails posing as the brand.*



*The Morrisons phishing email is just like the Tesco one with different logos. The phishing email is promising big rewards for doing very little.*



## CAMBRIDGESHIRE AND PETERBOROUGH AGAINST SCAMS PARTNERSHIP

# Follow Trading Standards advice to avoid rogue traders

CAMBRIDGESHIRE & Peterborough Trading Standards has seen an increase in rogue trading incidents in recent years and its officers work with Cambridgeshire Police to tackle rogue trading by sharing intelligence and assisting each other with investigations.

The victims are often the most vulnerable in our community and the impact on them is immense. Many are targeted over a period of years and some rogue traders acquire a huge income from this type of work.

*...organised crime gangs targeting the elderly and vulnerable...*

Rogue trading ranges from poor quality work and high pressure sales to organised crime gangs targeting the elderly and vulnerable on a daily basis, often demanding large amounts of money by threats and intimidation, sometimes without even doing any work.

Kirsty from Cambridgeshire & Peterborough Trading Standards has the following tips if you are looking to have work carried out on your property:

### Do:

- Get recommendations from someone you trust (friend, family, neighbour).
- Always obtain a written quotation and aim to obtain at least three written quotations.
- Take time to consider the quotations.
- Ask for the trader's ID and carry out your own checks to establish if they are genuine (never phone a number that they have provided you with to verify their identity).

### Don't:

- Agree to work offered by someone who cold calls you without carrying out your own research into their business or whether the work is actually needed.
- Pay cash up front.
- Feel pressured into agreeing work.

To find reputable traders, visit our CAPASP partner Safe Local Trades <https://www.safelocaltrades.com/> or Buy with Confidence <https://www.buywithconfidence.gov.uk/>

Trading Standards would urge you to contact their advice partners at the

Citizens Advice Consumer Service in relation to suspected rogue trader incidents or suspicious activities. Doing this ensures that the information is recorded on the national complaints database. Where appropriate, a copy of the complaint is passed to both the consumer's local Trading Standards Service and the trader's local Trading Standards Service if the trader's address is known.

The Citizens Advice Consumer Service can be contacted on 0808 223 1133 during office hours Monday to Friday, or visit <https://www.citizensadvice.org.uk/consumer> where an online form is available.

If you think you, or someone you know, has been targeted by rogue traders, you can also report it to the Police on 101 (if it's after the event) or on 999 if the incident is still occurring, or the traders are coming back to collect money.

## Police surgery at the Eco Hub

Our PCSO Lindsay Gardiner will resume the PCSO surgeries at the Eco Hub in December. The first such will be at 11:00am on Saturday, 4<sup>th</sup> December.

Gamlingay Community Safety Group will also be there with a selection of safety/security items for sale and will be happy to talk about your experiences of scams, thefts, etc.

## Gamlingay Crime Report

Two crimes have been reported since 1<sup>st</sup> September:

**12/09/21**

Church Street, shoplifting of meat.

**03/10/21**

Elizabeth Way, arson. Unknown offenders set fire to a van.

### Seasoned Firewood Logs



Firewood logs, all hardwood (beech, oak, ash, elm and sycamore), split and fully seasoned, all under 20% moisture and ready to burn.

No softwood or undesirable hardwoods such as willow/poplar in the bag, only the best burning woods.

£85 (inc. VAT) for a bulk bag (builder's bag) or £160 (inc. VAT) for 2 bags.

Constant supply throughout the year.

Free delivery within a ten-mile radius of Gamlingay, St Neots and Godmanchester.

We will deliver further for a small delivery charge or free for a multiple order.

Payment on delivery.

Contact Simon Gurry  
on 07734 159 501

### P H Plumbing & Heating Services



**Aqualisa Shower Specialists**

**Specialists in Bathroom Suites**  
**Small leaks, showers**  
**Taps, Cylinders**  
**Gutter clean-outs**  
**Blocked drains & sinks**

**24 Hour emergency callout**

Find us at [Yell.com](http://Yell.com)  
07855 902358

# Decade Busters party



THE sound of laughter and great conversation filled the Kingspan Room at the Eco Hub on Saturday 2<sup>nd</sup> October when our Gamlingay 'Decade Busters' aged 70, 80 and 90 years young came together with their guests to celebrate their milestone birthdays since Covid-19 began.

Following a superb buffet and a selection of desserts to share everyone had tea and a slice of birthday cake before it was time to head for home.

We must give a special mention to Sue Banham for stepping in to provide the buffet after the first caterer cancelled. Our thanks go to Sue for all her help and assistance. Without her the event simply would not have taken place.

A special 'thank you' must also go to

our willing and wonderful helpers on the day both for setting up, providing the music, serving the food and clearing up afterwards. A great team effort by all!

Sadly one of our organisers, Ivan, was unable to join us so we take this opportunity to send him our kind regards and wishes for a swift recovery.

Ivan had written a beautiful speech/poem especially for the event so Ann Kirby kindly read it aloud (*see panel below*).

It just leaves us to wish everyone, who has reached or will be reaching a big 'zero' birthday in 2021, many happy returns and trust you have or will be celebrating in style.

Our very best wishes,  
*Jean York and Sue Barrett*

*Memories of childhood and of a family gathering on a cold winter's evening in an ancient farmhouse a long, long time ago.*

## On a cold night

I heard the crackle and gentle shifting of burning logs and the popping of sap and the fall of ash on open hearth.

And came happy memories of the smell of woodsmoke, the flicker of firelight on walls and ceiling and the glowing faces of happy children huddled with me in cosy warmth, and a wonderful feeling, safe from the cold outside – from the terrible freezing.

Was I dreaming? Was I pining for the time when only feelings filled my mind and cold reason born of many years had not stolen the innocence from my being?

A living fire glowing warmly, flames flickering, sometimes blazing, even roaring, is like a jolly old friend embracing us warmly.

*Ivan Williams*

*Ladies and gentlemen,  
Married or single,  
widow or widower,  
of failing sight  
or hard of hearing,  
hair thinning  
or gone missing  
or even a risqué shade of grey,  
welcome to this gathering  
to celebrate a milestone decade.*

*Life has thrown a lot at us  
but we fought back.*

*It may have ruffled our feathers  
or nearly broken our hearts  
but here we are, all together  
a load of old ... 'windbags'!  
and still heading in the right direction  
– 100 with a bit of luck.*

*It's time to let our hair down,  
quench our thirst and fill our tums  
and share good memories  
with fellow old-timers  
and have some fun  
CHEERS!*

Need an ...

## ELECTRICIAN?

**Peter E. Moss**

Over 40 Years' Service

No VAT added



Phone: **01480 473892**

Mobile: **07802 720173**

**mosselectric@hotmail.com**

For details about advertising your business please email:

**adverts@gamlingaygazette.uk**



Extensions

Loft and Garage Conversions

Kitchens and Bathrooms

Refurbishments

All aspects of Carpentry

Free no obligation quotes

**07889 966 957**

**wilsherbuildingservices@outlook.com**

## **Clarke Midgley**

*Professional, reliable & trustworthy*

**PAINTER & DECORATOR**

*Established 2002*



Call **01480-880593 (Yelling)**  
or **07904-585963**

or email  
**psychosibes@gmail.com**

# What makes a village so special?

CITY-FOLK and townies may imagine village life will be an opportunity to walk unhindered through the countryside, to go to sleep at night and hear only nature through the open windows, rather than emergency vehicles and constant traffic, and that living in a village means you'll breathe fresh, unpolluted air.\*

Yes, there are those benefits, and more, when we live in a village. And there are the downsides: virtually non-existent public transport tops the list for many. Having to go outside the village for many of our public services such as hospitals and education serves to highlight the missing bus service.

But there is one aspect of village life which really underlines what it is all about. It's what brings us the village fireworks, tidies our streets and enables our parish council to function. It is the thing that means anyone who needs to get to a medical appointment can do so economically. It enables the village show to take place and countless other groups to function, and it is what brings *The Gazette* to you ten times a year.

Village life brings out the best in people and sees them step forward to volunteer to help their community, and to do so unpaid, often unthanked and frequently unappreciated.

Volunteering is at the heart of enabling our community to function as well as it does. Highlighted in this issue of *The Gazette* is the group of

volunteers who have stepped forward to do their very best to ensure we have a gym again. In due course they'll be calling on other people to help run it. Will you help? Any necessary training will be given free of charge.

We've seen appeals recently for volunteer drivers to help the community transport scheme. Do you have a car? Can you drive? Then you probably qualify.

Have you seen the litter-pickers out with their reflective jackets? They are individuals who decided they'd like to help keep the village tidy. You might bump into them on Church Street as you walk by the Community Fridge and Freezer in the almshouse chapel, which is of course staffed by volunteers.

The volunteer Friends of GVP organised the fireworks for you, the Gamlingay Show committee put on another tremendous event for you ... could you help either of those groups?

There are vacancies on the Parish Council – the main qualification for that role is that you should have a functioning pulse.

Here on *The Gazette* we would really appreciate a few more volunteers to help with distribution and production.

So the question has to be, if you value your village life and aren't currently volunteering ... why not?

*\* When they're muck spreading you might wonder about the "fresh, unpolluted air."*

## **SCOTT ROOFING LTD**

Roofing Specialist

Your local traditional Roofer

Free quotations and advice

All roofing works undertaken:

tiling - slating - felt flat roofs - repairs - chimney re-pointing -  
insulation - facias/gutters - moss removal - new roofs - lead work

Call Scott:

**Mob 07834 777 134**

**Tel 01767 651 626**

Proudly serving the village for over 15 years

# News from Gamlingay & District History Society

## History of Gamlingay's Almshouses

Gamlingay & District History Society's 2021-2022 lecture season began on 12<sup>th</sup> October when Philip Gorton, ably assisted by Jackie and Philip Hough, gave a talk on the history of Gamlingay's almshouses. This was our first talk since March 2020, and it was very well attended.

Philip took us through the history of this remarkable range of ten tenements and their associated chapel from their construction in the 1660's all the way through to improvements made in recent times.

We are all familiar with these lovely old red brick cottages but they would not be housing local people and ornamenting the village without the hard work of the almshouse trustees.

## Upcoming events

Our next meeting is at 7.30pm on Tuesday, 14<sup>th</sup> December when we will hold our Christmas social and quiz. Teams for the quiz will be put together on the night, and questions will be about local and general history. We hope to provide festive refreshments.

This meeting will take place in the main hall at the Eco Hub which allows us to accommodate the usual number of attendees, while maintaining social distancing.

If you join the Society at this meeting you will have free access to all of the Society's meetings until June 2022. Alternatively, you can attend as a visitor for £3.00. Either way, you will be very welcome!

Meantime, check out our websites, [www.gamlingayhistory.co.uk](http://www.gamlingayhistory.co.uk), and [www.gamlingayphotos.co.uk](http://www.gamlingayphotos.co.uk) to find out more about us, see the rest of our programme, and enjoy stories and photographs from Gamlingay's past.

*Peter Wright*

### GAMELA'S PEOPLE

"More by sheer good fortune than anything else, Gamlingay must be one of the best-documented villages in England. This brief canter through its history can only kick up a few small divots from the mass of evidence that has survived."

*Jim Brown*



*The Almshouses on Church Street, Gamlingay, c. 1942*



*The Almshouses on Church Street, Gamlingay, c. 1960*



*The Almshouses on Church Street, Gamlingay, c. 1970s*

# Cauliflower pâté

## A Christmas dinner starter

Vegetarian recipe from Roderick Starksfield



### To serve:

- » Toast or crackers
- » Green leaves – watercress, rocket, radicchio

### Method

- » Preheat the oven to 180°C (350°F) Gas mark 4.
- » To prepare the cauliflower chop into pieces about 1 cm (3/4 inch).
- » Put in a saucepan, cover with water and set over a low-medium heat.
- » Simmer for five minutes and drain well.
- » Scatter the cauliflower onto a baking sheet, drizzle with a little vegetable oil and sprinkle with salt.
- » Roast in the preheated oven for 12 to 20 minutes until just starting to turn golden, watch it carefully, you need to dry out the cauliflower, but not burn it.
- » Remove from the oven and return the cauliflower to the saucepan, add the cream, lemon zest and juice, the mustard (optional), with a generous pinch of salt (taste to check seasoning).
- » Puree using a handheld electric blender until it resembles cottage cheese in consistency.
- » Set aside to cool, then put in the fridge.
- » Once it has cooled completely the pâté is finished.
- » Pack into small ramekins (see left), decorate the top with the capers, peppercorns and/or paprika.
- » It can now be stored in a sealed container, in the fridge, for up to four days, or frozen.
- » To serve, spread the pate on toasts and top with salad leaves.

### Comment

The glass pots that come with GÜ deserts are perfect. Alternatively, spread into a small casserole dish, pre-lined with cling-film so it can be easily turned out.

## POTTON WINDOWS LTD

Quality PVCu  
Windows and Doors  
Double Glazed  
Secured by Design

FENSA and 10-year Guarantee  
Professional Service Assured

Discounts for Pensioners

Tel: 01767 260626

E-mail:  
sales@pottonwindows.co.uk

Cauliflower is a hugely versatile vegetable. Roasting gives it a sweetness and nuttiness that makes a gorgeous pâté. This recipe makes about six individual pots.

### Ingredients:

#### For the pâté:

- » Medium sized cauliflower
- » 250ml double cream
- » Vegetable oil to drizzle
- » 2 teaspoons English mustard powder
- » Zest and juice of a lemon
- » Table salt to season

#### Topping:

- » Capers, green peppercorns in brine (optional)
- » Dusting of paprika (optional)
- » Pomegranate molasses trickled across the top (optional)

## Need to lose lockdown weight?

Based in Gamlingay I offer 1:1 virtual support to get

**AMAZINGLY QUICK RESULTS** including:

- » Products to suit everybody
- » Free delivery/collection
- » Visible results to keep you motivated

For more information contact Lynne on:  
Mobile: 07890 068 644  
Home: 01767 448 552  
lynnestukins.cwp@gmail.com  
www.one2onediet.com/LynneS

THE 1:1 DIET  
by Cambridge Weight Plan

## Slim with Penny

...at the Gamlingay Eco Hub



Come along on Mondays at 6:00pm – no booking required.

New, existing and returning members all welcome.

Telephone:  
07737 809516/WhatsApp

Email:  
slimwithpenny@yahoo.com

Facebook:  
<https://www.facebook.com/slimwithpennygamlingay>





# Quiz and Puzzle Corner

by Kevin Bentley

## Komino rules

USING the whole list of reversible digit pairs, complete the grid so that each box contains one pair. A digit cannot be beside the same digit in an adjacent box. Boxes containing a pair of identical digits cannot be side by side.

<b>Komino</b>	<b>Medium</b>																																										
<table border="1" style="width: 100%; height: 100%; border-collapse: collapse;"> <tr><td style="width: 25%;"></td><td style="width: 25%;"></td><td style="width: 25%; text-align: center;">9</td><td style="width: 25%;"></td></tr> <tr><td></td><td style="background-color: black;"></td><td style="background-color: black;"></td><td style="text-align: right;">5</td></tr> <tr><td style="text-align: left;">7</td><td></td><td style="text-align: center;">4</td><td style="text-align: right;">8</td></tr> <tr><td></td><td style="text-align: center;">2</td><td style="text-align: center;">9</td><td style="text-align: center;">6</td></tr> <tr><td></td><td style="background-color: black;"></td><td style="background-color: black;"></td><td style="text-align: right;">9</td></tr> <tr><td style="text-align: left;">2</td><td style="text-align: center;">5</td><td></td><td style="text-align: right;">1</td></tr> </table>			9					5	7		4	8		2	9	6				9	2	5		1	<table style="width: 100%; border-collapse: collapse;"> <tr><td>0 0</td><td>0 3</td><td>1 6</td></tr> <tr><td>2 2</td><td>2 9</td><td>3 3</td></tr> <tr><td>3 6</td><td>3 7</td><td>3 8</td></tr> <tr><td>3 9</td><td>4 4</td><td>4 5</td></tr> <tr><td>5 8</td><td>5 9</td><td>7 9</td></tr> <tr><td>9 9</td><td></td><td></td></tr> </table>	0 0	0 3	1 6	2 2	2 9	3 3	3 6	3 7	3 8	3 9	4 4	4 5	5 8	5 9	7 9	9 9		
		9																																									
			5																																								
7		4	8																																								
	2	9	6																																								
			9																																								
2	5		1																																								
0 0	0 3	1 6																																									
2 2	2 9	3 3																																									
3 6	3 7	3 8																																									
3 9	4 4	4 5																																									
5 8	5 9	7 9																																									
9 9																																											

Copyright (C) 2021 Kevin Bentley. All rights reserved.

## November Solution

I HOPE that you have enjoyed the challenge of solving these Komino puzzles. These are similar to the ones I have published in my first book of 200 Komino Puzzles which is currently available with 25% off the retail price from my publishers (Troubador) for £7.50 at: [www.kominopuzzle.com](http://www.kominopuzzle.com)

4 4	9 8	5 5
5 7	1 9	0 9
9 9	5 3	5 6
2 4	9 5	3 3

## Lewis Wooding

Internal & External  
Decorating Services

Personal references available

Competitive estimates  
Detailed quotations

Phone 01767 651647  
Mobile 07889 966557

## D C FINNIGAN

*Motor Engineering Specialists*

Unit 1, Green End Industrial Estate  
Gamlingay

**MOT**  
TESTING  
STATION

**Tel: 01767 651 653**

**Your local MOT Test Centre  
for Gamlingay**

Servicing and repairs  
for most makes of car

Telephone now  
for fast, friendly service

**Simple Solutions**

(Cambs) Limited

*Accounting & Administration for the small business*

**Small business?** Find record keeping a chore? Not really sure what you should be doing?

**Let us help** – we can take the whole job off your hands or give you the training to complete it yourself –

Accountancy, Bookkeeping, Payroll,  
VAT, CIS, 1-1 Training

**Whatever you need we have  
the Solution!**

For a free consultation contact  
01767 677562 or  
[admin@simplesolutionscambs.co.uk](mailto:admin@simplesolutionscambs.co.uk)

# Village Information

## Emergency Services

<b>Police, Ambulance and Fire</b>	<b>999</b>
Non-Emergency Fire	01223 376 217
Non-Emergency Police and Community Police	101
PC John Coppard john.coppard@cambs.pnn.police.uk	

## Healthcare and Council

Medical centre	
Appointments	260 340
Out of hours	111
District nurses	08456 024 064
Age Concern	01354 696 650
Homecare	07776 021 611
Anne Hutson	
Community car scheme	07519 493 701
Alison Baker	

### Parish Council 650 310

*Clerks:* Kirstin Rayner, Leanne Bacon  
at *ecohub*: clerk@gamlingay-pc.gov.uk  
*web page:* www.gamlingay-pc.gov.uk  
*Chairman:* Harriet Gould  
*Vice-Chairman:* Wendy Boyne

### Faulty Street Lights 0800 7873 247

Library 651 226  
Kate Laugharne

Forward Gamlingay  
Chair: Sarah Groom

### Hatley Parish Council 650 596

*Clerk:* Kim Wilde  
parishclerk@hatley.info  
www.hatley.info  
*Chairman:* Margot Eagle

## Politics

Member of Parliament 0207 219 3000  
Anthony Browne  
anthony.browne.mp@parliament.uk

County Councillor 651 982  
Sebastian Kindersley

District Councillor 650 510  
Bridget Smith 03450 450 500  
Monday-Saturday 08:00 to 20:00  
South Cambridgeshire District Council

Hatley District Councillor 07885 774 775  
Heather Williams  
cllr.williams@scambs.gov.uk

## Churches

Baptist Church, Office	Church Office Sally Graves	651 519 650 112
St. Mary The Virgin	<i>Rector:</i> Hilary Young <i>Church Warden:</i> Nick Ingles <i>Reader:</i> Chris Miller	650 587 07828 934 003 650 779

## Halls for Hire

Ecohub	Sarah Groom, Kate Laugharne manager@gamlingayecohub.org.uk	651 226
Everton Village Hall		682 251
Hatley St. George Village Hall	Kim Wilde www.hatley.info	650 596
Methodist Chapel	Parish Council	650 310
St. Mary's Church	Lindy Gorton	650 581
Social Club	Martin Hull	650 418

## Hobbies, Leisure and Interests

Bell Ringers	John Boocock gamlingay-bell-ringers.webador.co.uk	650 736
Booklinks	Kate Laugharne	651 226
Cafe Connect	Ann Kirby	651 134
Fridays 10.30am-12.30pm		
Community Choir	Jane Orchiston	0753 500 5908
East Beds Model Railway Society	<i>Secretary:</i> John Wakeman wakemanpj@aol.com	
Friends of St Mary's	Helen Miller	677 390
Gamlingay Allotment Gardeners Association (GAGA)	<i>Secretary:</i> Mick Slimm a.slimm@btinternet.com <i>Membership Secretary:</i> John Way johnway803@gmail.com	650 650 650 114
Gamlingay Archaeological Group (Gamarch)	Chris Tomsett <i>Secretary:</i> Julia Manley julialmanley@yahoo.com	650 009
Gamlingay Players	Amy Lovat, lovatl@hotmail.com	07843 527 979
Gamlingay Walkers	Miriam and Phil Titchner	654 891
Gardening Club	Lindy Gorton	650 581
Guild of St. Mary's	Liz Huckle	650 988
History Society	Peter Wright gamlingayhistory@gmail.com	
Lacecaps	Pat Brunson	01480 385 351
Ladybird Club	Mrs C Watson	650 707
Music Club	Geoff Bruerton	650 748
Photographic Society	Chair/Secretary: Jackie Bruce nickbruce7@btinternet.com www.gamlingay-ps.org.uk	
Potton and District Writers	pottonwriters@gmail.com	
Royal British Legion	Sebastian Kindersley Jackie Hough	651 982 651 070
Sandy and District Round Table	Lee Packham Brown	

# Village Information

Sir John Jacob's Almshouses Trustees:	Jackie Hough Sebastian Kindersley Philip Gorton	651 070 651 982 650 581
St. Neots Model Railway Club	John Kneeshaw	j.kneeshaw@ntlworld.com
Village Show	Ginny Jones	07813 629354 ginnyjones2021@outlook.com
Women's Institute	Lindsay Bygraves Jean York	651 227 650 367

## Preschool Groups and Education

Carers Group	Bridget Smith	650 510
Everton Preschool	Julie	07814 815 491
Jelly Tots	Emma Radley Natalie	07156 027 150 691 477
Montessori	Mrs Pat Jenkins	650 645 07714 821 940
Rainbow Preschool	Lisa Burton	651 996

## School

Gamlingay Primary		650 208
-------------------	--	---------

## Sports

Bowls Club	Brian Culverhouse	651 020
Breeze Ladies Cycling	Gill Kitchener	650 035
Football Club (Youth Teams)	Chair: Brian Culverhouse	651 020
Gamlingay Gym		651 785
Gamlingay Netball Club	Gamlingaynetball@gmail.com	
Girls Football – MUGA	Nancy Kyle nantmarg@hotmail.co.uk	651 785
Junior Football School	Brian Culverhouse	651 020
Tennis Club	John Gray	654 165
Waresley Cricket Club	Rod Kerr waresleycc@hotmail.co.uk	07545 453 559

## Youth Groups

1st Gamlingay Brownies	Jane Brown	652 997
1st Gamlingay Rainbows	Sarah Galvin / Jacqueline Boocock gamlingayrainbows@outlook.com	
2nd Gamlingay Guides	Benita Scott	650 547
Beavers	Mark Harrison	07979 102 568
Explorers	Vacancy	
Gamlingay Cubs	Steve Palmer	651 532
Gamlingay Scouts	Will Colebrook	07527 717 463
Gransden Cubs	Susan Jefferd	261 000
Pathfinder Scouts	Mark Harrison	07979 102 568
Tinuwen Rangers	Irene Gray	651 212
Youth Cafe	Lucy Rands	07929 453 235
Youth Club	Lucy Rands	07929 453 235

## Cambridge County Council

### Care Services

Adult Health and Social Service General Enquiries	0345 045 5201
Adult Social Care	0345 045 5202
Children's Services	0345 045 5203
Blue Badges Disabled Parking	0345 045 5204
Occupational Health	0345 045 5205
Learning Disability Partnership/Sensory Services	0345 045 5221

### General Community Services

Citizenship	0345 045 5155
Education Transport	0345 045 5208
Education Welfare Benefits Service	0345 045 1361
Family Information Service	0345 045 1360
General Enquiries	0345 045 5200
Human Resources (Recruitment Line)	0345 045 5210
Library Services (includes automatic renewals)	0345 045 5225
Online Payments Support	0345 045 5211
Streetscene (Highways, Transport and Streets)	0345 045 5212
Switchboard	0345 045 5222
Trading Standards	0845 404 0506
Waste Management	0345 045 5207

### Other Emergency Services

<b>Power cuts</b>	
UK Power Network	105
<b>Water supply</b>	
Cambridge Water	01223 706 050
<b>Surface flooding</b>	
Cambs County Council	0345 045 5200
<b>Sewer flooding</b>	
Anglian Water	03457 145 145
<b>Domestic gas emergency</b>	
	0800 111 999



## WORBOYS GARAGE & FILLING STATION

Mill Street, Gamlingay

Serving Gamlingay since 1936



## MOT TESTING STATION

Servicing and repairs on most makes of car and light commercials

Tyres - Batteries - Exhausts

Tel: 01767 650 273

## travel counsellors



### Kirstie Timmins Your Local Personal Travel Agent

Let me plan your next holiday, saving you stress and time, I will personally tailor your travel experience, providing impartial advice, to help you make up your informed decision. One to one excellent service from start to finish, with free local meetings available. 100% Financial Protection / 24/7 Support / 100% personal customer satisfaction

T. 01767 360014 M. 07815 814798

E. [kirstie.timmins@travelcounsellors.com](mailto:kirstie.timmins@travelcounsellors.com)

W. <http://www.travelcounsellors.co.uk/kirstie.timmins>

FB@kirstietimmins



With us...it's personal



### James Brickwork And Building

Telephone: 01767 651469  
Mobile: 07775 874642

JAMES CLEMENTS  
The Gables  
5 Mill Street  
Gamlingay  
SG19 3JW



Extensions - Block Paving  
Patios - Fireplaces - Walling



## CHILTERN

School of Motoring

Female Driving Instructor  
Block booking discounts

Tel: Liz 07986 543 121

Email: [info@chilternsom.co.uk](mailto:info@chilternsom.co.uk)

Web: [chilternsom.co.uk](http://chilternsom.co.uk)



### LIFELONG KITCHENS LTD

Quality designer and bespoke fitted kitchens  
Free, no obligation measure and design service

8 The Green, Eaton Ford, St Neots PE19 7AF  
Tel: 01480 220908

Email: [showroom@lifelongkitchens.co.uk](mailto:showroom@lifelongkitchens.co.uk)

For details to advertise your business in *The Gazette* please email:  
**[adverts@gamlingaygazette.uk](mailto:adverts@gamlingaygazette.uk)**

### Gransden Self Storage

24-Hour Access  
7 Days a Week  
365 Days a Year

**01767 676 189**

[www.gransdenselfstorage.co.uk](http://www.gransdenselfstorage.co.uk)

### WINDOW AND CONSERVATORY CLEANERS

#### Qualitas Maintenance Ltd

Established 2008

Residential and Commercial window cleaners

Based in Gamlingay

Free quotations without obligation

**Tel 07477 462 406**

[www.qualitaswindowcleaning.co.uk](http://www.qualitaswindowcleaning.co.uk)

### Grovemount Limited General Builders

All building & refurbishment work undertaken.

PVCu windows, doors & conservatories.

Potton Road The Heath, Gamlingay

**Tel: 01767 651 299**

## QUINCE

EST 1973  
Stoneworks

MARBLE, GRANITE &  
QUARTZ WORKTOPS

Templated supplied and installed onto new units or as replacement tops.

Combining modern machinery with traditional skills.

**Tel: 01767 314180**

Email: [sales@qstoneworks.co.uk](mailto:sales@qstoneworks.co.uk)

All major brands of quartz supplied



STONWORKS: 3 Potton Road · Biggleswade · SG18 0DU  
SHOWROOM: 83 High Street · Biggleswade · SG18 0LA

[www.qstoneworks.co.uk](http://www.qstoneworks.co.uk)

## Gott Plumbing & Heating

**07805 650940**

[www.gottplumbingandheating.co.uk](http://www.gottplumbingandheating.co.uk)



For high quality services at affordable prices, contact Ed Gott for all your plumbing, heating and oil boiler needs.

- 🔥 Oil Boiler Specialist
- 🔥 Plumbing
- 🔥 Central Heating
- 🔥 Burst Pipes
- 🔥 Leaking Taps
- 🔥 Bathroom Refit
- 🔥 Hot Water Cylinder
- 🔥 Wet Room Installations

Reliable local plumber based in Yelling.  
Email: [info@gottplumbingandheating.co.uk](mailto:info@gottplumbingandheating.co.uk)